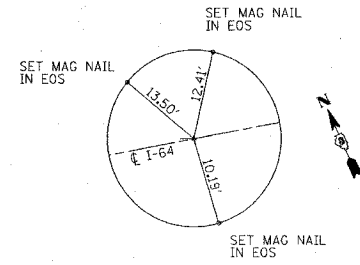


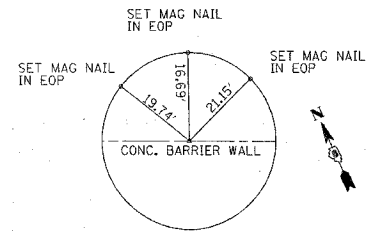
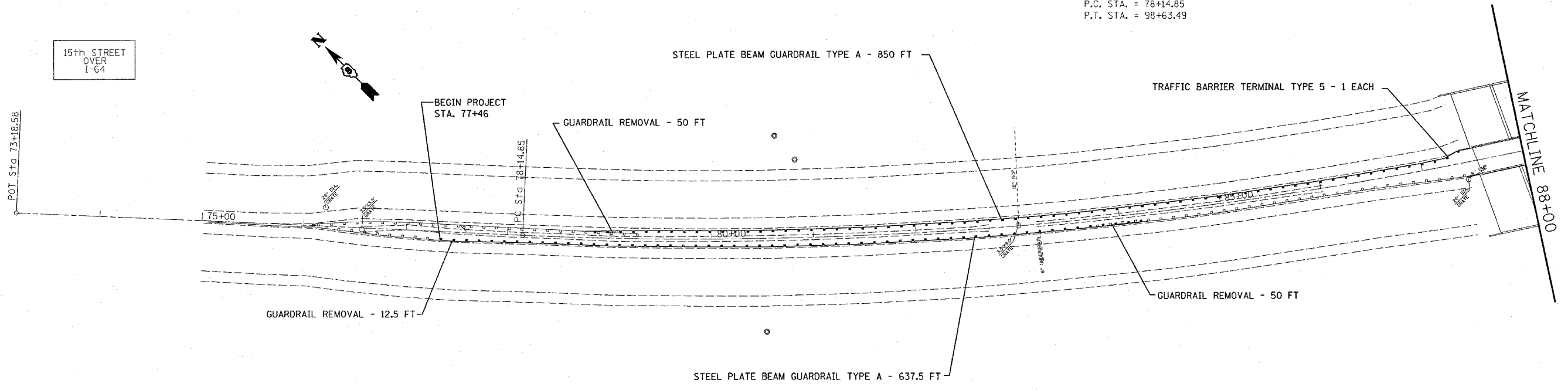
F.A.I. RTE.	SECTION	COUNTY	TOTAL SHEETS	SHEET NO.
64	82-(1,2,3,4)I-1	ST. CLAIR	42	7
STA.		TO STA.		
FED. ROAD DIST. NO.		ILLINOIS FED. AID PROJECT		



PC STATION 78+14.85
CHISELED 'X' IN CONC. DITCH

EXIST. CURVE 1
PI STA. = 88+63.98
 $\Delta = 30^\circ 26' 54''$ (LT)
D = $1^\circ 29' 11''$
R = 3,855.00'
T = 1,049.13'
L = 2,048.64'
E = 140.21'
 $\theta =$ -----
T.R. = -----
S.E. RUN = -----
P.C. STA. = 78+14.85
P.T. STA. = 98+63.49

I-64
OVER
18th STREET



STATION 75+00
CHISELED 'X' IN CONC. BARRIER WALL

BM: ELEV. 407.77 STA. 79+40
CHISELED 'X' ON NORTH SIDE OF CONC. LIGHT POLE FOUNDATION

PLOT DATE = @DATE@
FILE NAME = @FILE@
SHEET NO. = @SHEET@
REFERENCE = @REF@

REVISIONS	
NAME	DATE

ILLINOIS DEPARTMENT OF TRANSPORTATION
PLAN VIEW
FAI RTE 64
SECTION 82-(1,2,3,4)I-1
ST. CLAIR COUNTY

SCALE: VERT. _____
HORIZ. _____

DATE _____ DRAWN BY _____
CHECKED BY _____