

F.A.I. RTE.	SECTION	COUNTY	TOTAL SHEETS	SHEET NO.
270	60-(2,3)I	MADISON	32	1

STATE OF ILLINOIS
DEPARTMENT OF TRANSPORTATION
DIVISION OF HIGHWAYS

**PROPOSED
HIGHWAY PLANS**

FAI RTE 270 (I-270)
SECTION 60-(2,3)I
PROJECT: HSIP-270-6(099)002
HIGH TENSION CABLE MEDIAN BARRIER
MADISON COUNTY

C-98-049-06

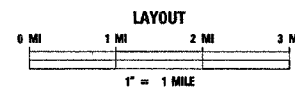
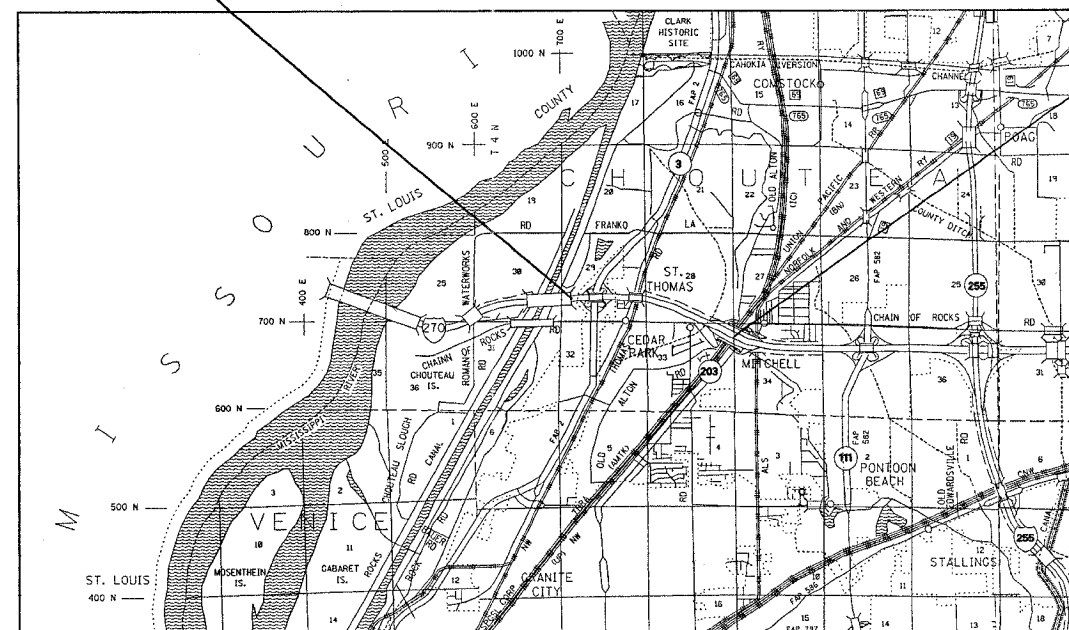
FOR INDEX OF SHEETS, SEE SHEET NO. 2

HIGHWAY STANDARDS

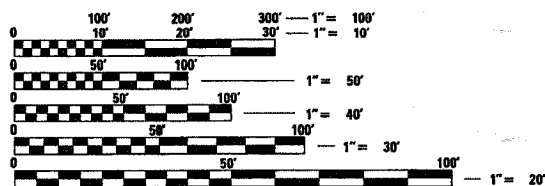
- 000001-04
- 701101-01
- 701400-02
- 701406-04
- 701426-02
- 702001-06
- 635006-02
- 635011-01
- 701401-03
- 280001-03
- 630301-04

BEGIN
STA. 211+88
LAT: 38.76567
LONG: -90.13154

END
STA. 315+92
LAT: 38.75996
LONG: -90.04588



MICROFILMED _____
REEL NUMBER _____
AWARDED _____
RESIDENT ENGINEER _____
AS BUILT CHANGES WERE MADE
ON THE FOLLOWING SHEETS



FULL SIZE PLANS HAVE BEEN PREPARED USING STANDARD ENGINEERING SCALES. REDUCED SIZED PLANS WILL NOT CONFORM TO STANDARD SCALES. IN MAKING MEASUREMENTS ON REDUCED PLANS, THE ABOVE SCALES MAY BE USED.

J.U.L.I.E.
JOINT UTILITY LOCATION INFORMATION FOR EXCAVATION
1-800-892-0123

DESIGN DESIGNATION

GROSS LENGTH = 10,404 FT = 1.97 MILES
NET LENGTH = 10,404 FT = 1.97 MILES

STATE OF ILLINOIS
DEPARTMENT OF TRANSPORTATION
DIVISION OF HIGHWAYS

SUBMITTED March 22, 2007

Mary C. James
DEPUTY DIRECTOR OF HIGHWAYS
REGION FIVE ENGINEER

May 11, 2007
Eric E. Hancock
ENGINEER OF DESIGN AND ENVIRONMENT

May 11, 2007
William R. Sees P.E.
DIRECTOR, DIVISION OF HIGHWAYS

**PRINTED BY THE AUTHORITY
OF THE STATE OF ILLINOIS**

PROJECT ENGINEER: PATTI LEBEAU 618-346-3179
SQUAD LEADER: CHERYL KEPLAR 618-346-3186

CONTRACT NO. 76A20