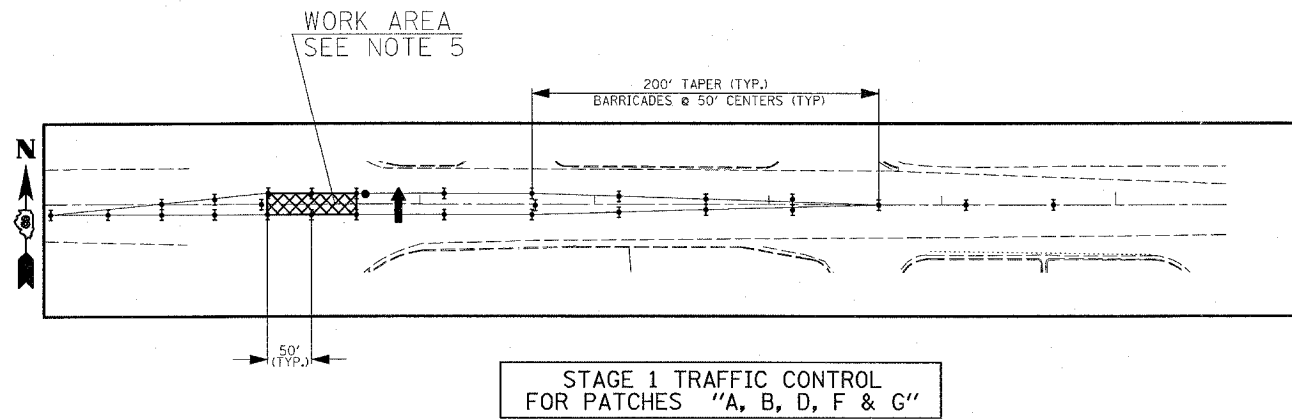
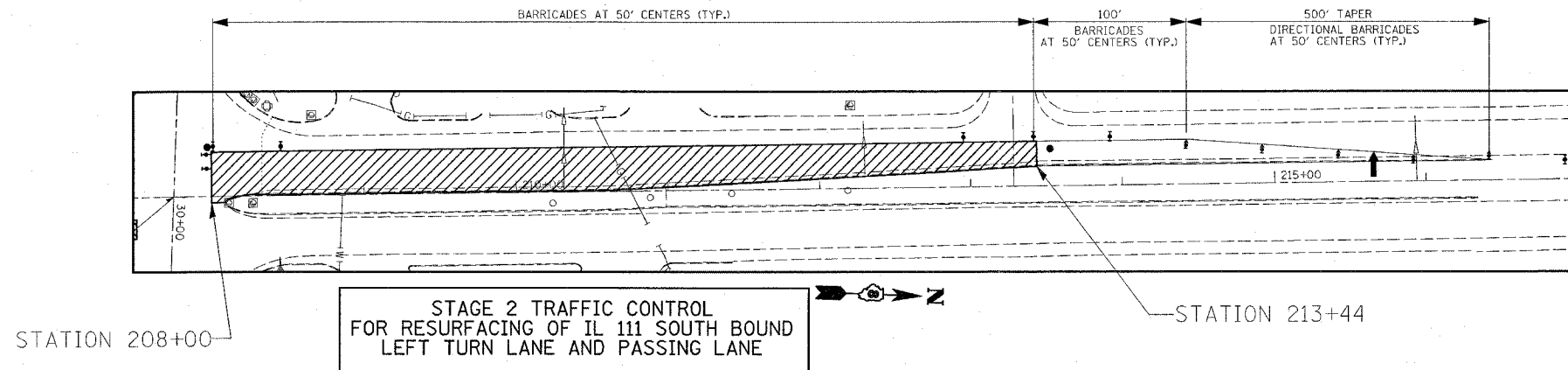


F.A.P. RTE.	SECTION	COUNTY	TOTAL SHEETS	SHEET NO.
582	6-31	MADISON	18	17
STA. _____		TO STA. _____		
FED. ROAD DIST. NO. _____		ILLINOIS FED. AID PROJECT		



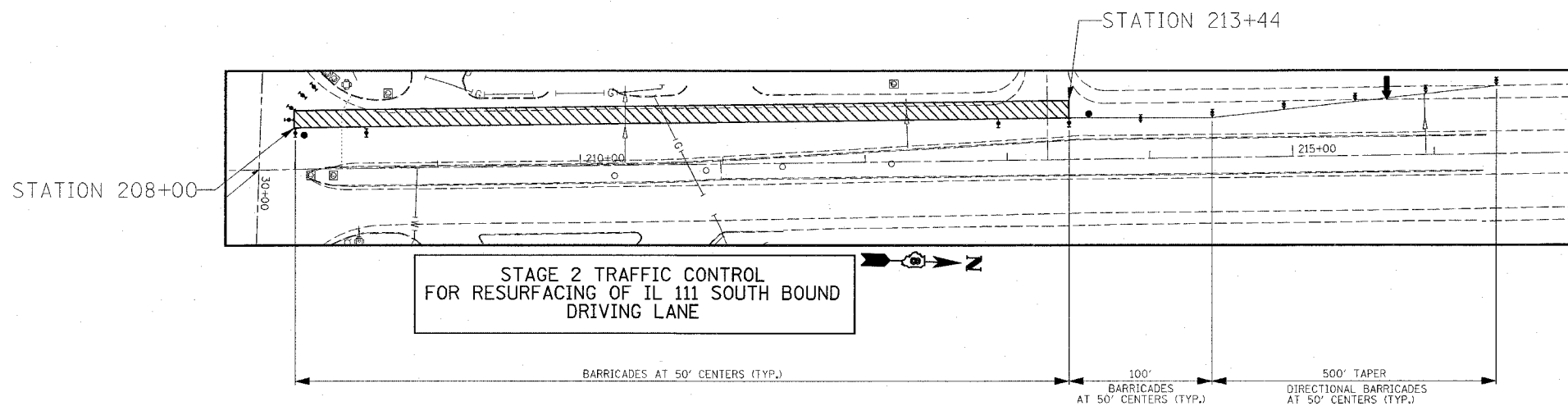
NOTES

- ① SEE SHEET 2 FOR TRAFFIC CONTROL NOTES
- ② TOTAL LENGTH OF LANE CLOSURE TAPERS = 200'
- ③ VERTICAL BARRICADES SHALL BE AT 50' CENTERS (TYP.)
- ④ FLAGGER REQUIRED DURING ALL HOURS OF LANE CLOSURES.
- ⑤ STAGE 1 - AS WORK APPROACHES INTERSECTION, TAPER LENGTH ON WEST END WILL DECREASE.



SYMBOLS

- ↑ ARROW BOARD
- ▨ WORK AREA-LENGTH TO BE DETERMINED BY CONTRACTOR AND APPROVED BY RESIDENT ENGINEER
- BARRICADE OR DRUM WITH STEADY BURNING MONDIRECTIONAL LIGHT
- I BARRICADE OR DRUM WITHOUT FLASHING LIGHT
- FLAGGER WITH TRAFFIC CONTROL SIGN
- CONE, DRUM OR BARRICADE (CONES FOR DAYTIME USE ONLY)
- ⊥ SIGN ON PORTABLE OR PERMANENT SUPPORT
- ↑ DIRECTION INDICATOR BARRICADE WITH STEADY BURN MONODIRECTIONAL LIGHT



REVISIONS		ILLINOIS DEPARTMENT OF TRANSPORTATION TRAFFIC CONTROL
NAME	DATE	
		FAP ROUTE 582 SECTION 6-31 MADISON COUNTY
SCALE:	VERT. HORIZ.	DRAWN BY
DATE		CHECKED BY

PLOT DATE = 5/2/2007
 FILE NAME = c:\projects\76b02\plan\stage2\stage2.dgn
 PLOT SCALE = 50,000 / IN.
 REFERENCE = #REF#