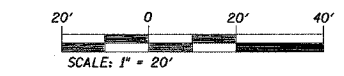
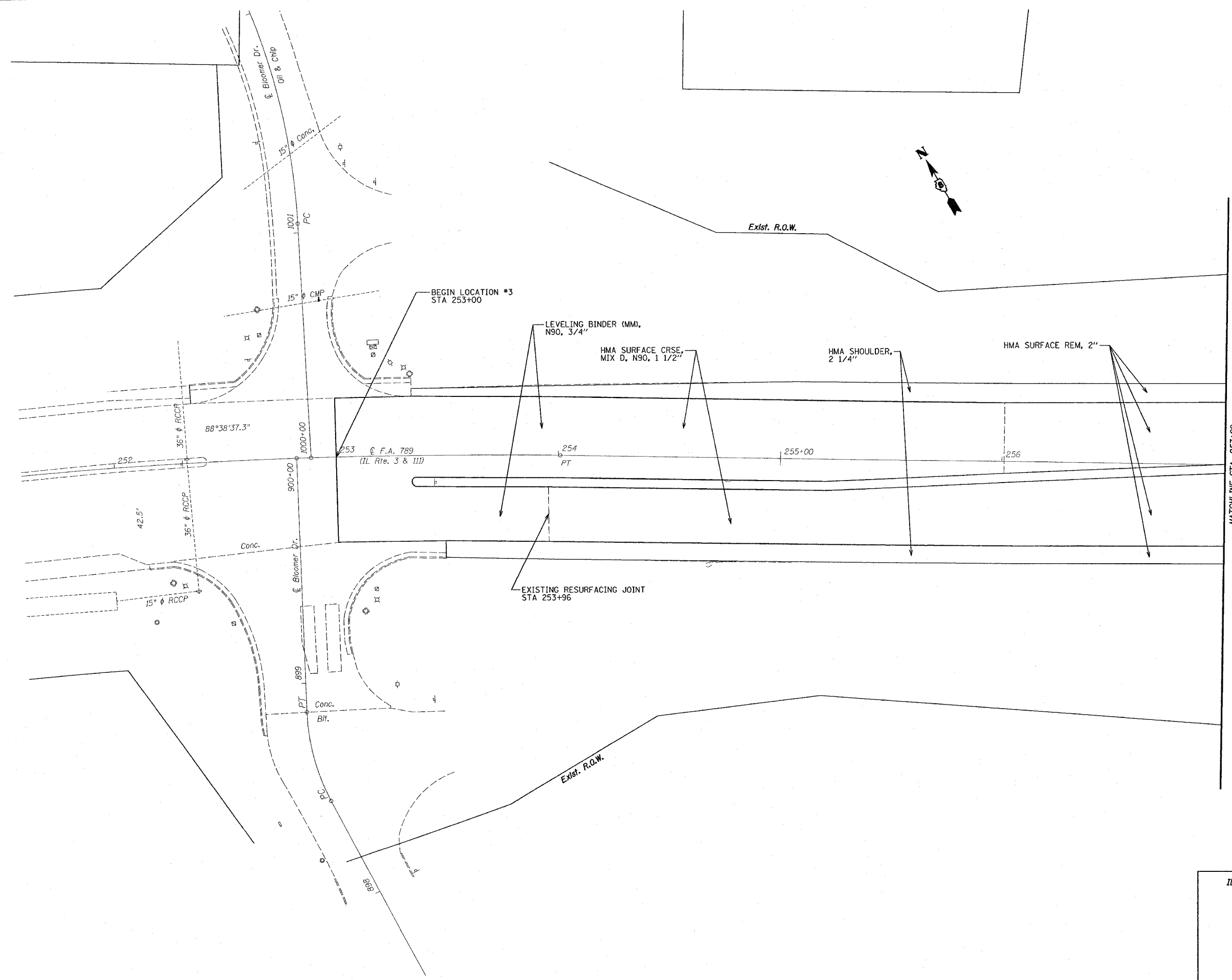


P.A.P. No.	SECTION	COUNTY	TOTAL SHEETS	SHEET NO.
789	IRS-1	MADISON	26	12
STA. 253+00		TO STA. 257+00		
EXISTING CONDITIONS: _____				

PLAN	DATE
SUBMITTED	
ALIGNED	
CHECKED	
BY	
DATE	



ILLINOIS DEPARTMENT OF TRANSPORTATION

**PLAN SHEETS**  
**LOCATION #3**

F.A. 789 (IL RTE. 3 & 111)  
SECTION IRS-1  
MADISON COUNTY

DATE: 4/5/2007  
 REF: \_\_\_\_\_  
 PLOT DATE: 4/5/2007