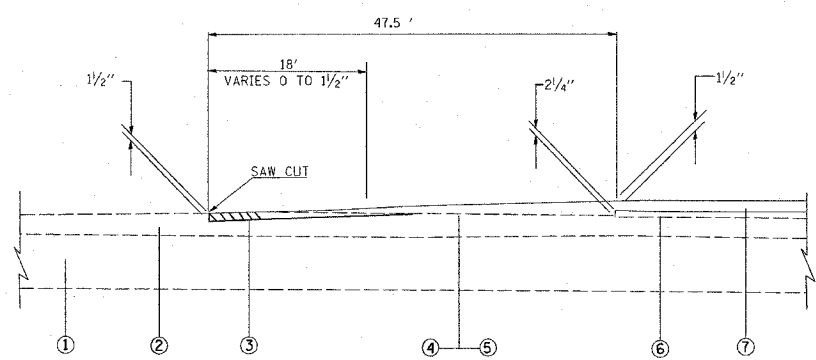
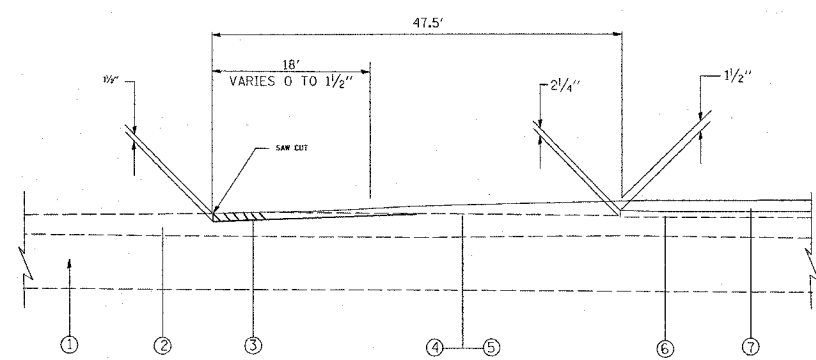


F.A.I. RTE.	SECTION	COUNTY	TOTAL SHEETS	SHEET NO.
**	**	MADISON	37	29
STA. TO STA.				
FED. ROAD DIST. NO. ILLINOIS FED. AID PROJECT				
*255-55/70				
**60-7, 60-9)RS AND 60-(6-1,7-1)RS				

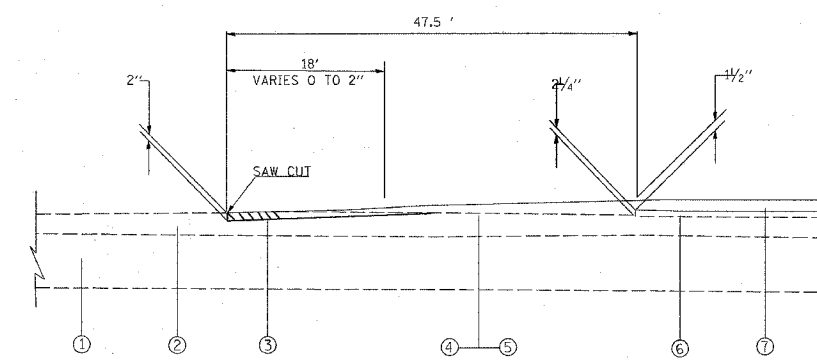
- LEGEND**
1. EXISTING PAVEMENT
  2. EXISTING PCC PAVEMENT
  3. PROPOSED PCC SURFACE REMOVAL - BUTT JOINT
  4. PROPOSED BITUMINOUS MATERIALS (PRIME COAT)
  5. PROPOSED AGGREGATE (PRIME COAT)
  6. PROPOSED POLYMERIZED BCSC SUPER IL 19.0 N70 - 2/4"
  7. PROPOSED POLYMERIZED BCSC SUPER "E" N70 - 1/2"



**BUTT JOINT DETAIL**  
(CONCRETE)  
STA. 101+70 TO STA. 102+17

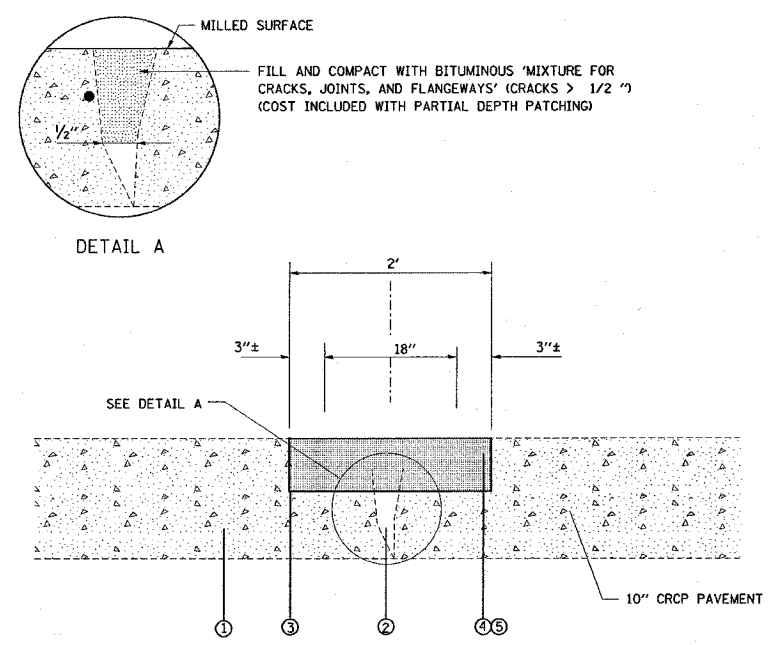


**BUTT JOINT DETAIL**  
(HOT MIX ASPHALT)  
STA. 161+40 TO STA. 161+87

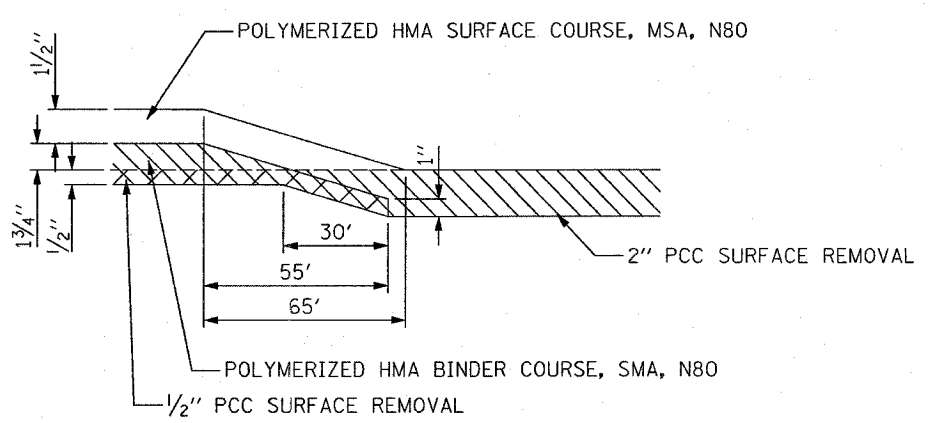


**BUTT JOINT DETAIL**  
PAVEMENT TRANSITION DETAIL  
STA. 232+26.55 TO STA. 232+74.05

**PARTIAL DEPTH PATCHING DETAIL**

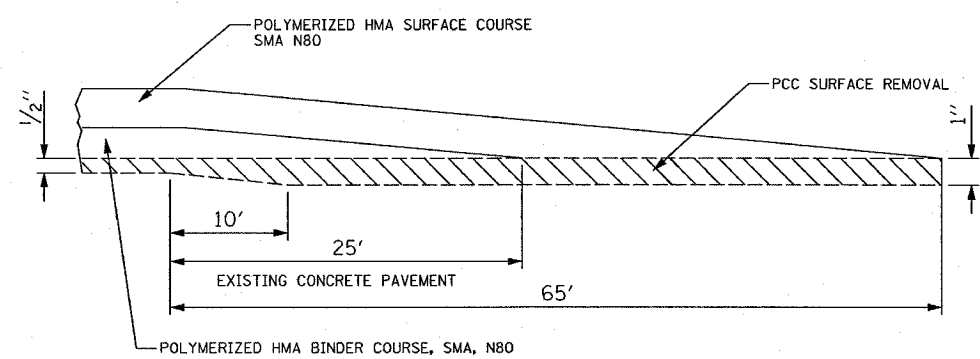


- LEGEND**
1. EXISTING CRCP PAVEMENT, 10"
  2. EXISTING LONGITUDINAL PAVEMENT CRACK
  3. EXISTING PAVEMENT REINFORCEMENT
  4. PROPOSED PARTIAL DEPTH REMOVAL, 2"
  5. PROPOSED PARTIAL DEPTH PATCHING
  - POLYMERIZED HMA SURFACE COURSE, SMA, N80



**RESURFACING TRANSITIONS**

- STA. 200+00 TO STA. 200+65 RAMP 1 (LOC 1)
- STA. 161+35 TO STA. 162+00 RAMP 1 (LOC 1)
- STA. 224+35 TO STA. 225+00 RAMP 2 (LOC 1)
- STA. 759+35 TO STA. 760+00 RAMP 3 (LOC 2)
- STA. 1273+35 TO STA. 1274+00 MAINLINE (LOC 1)
- STA. 1525+35 TO STA. 1526+00 MAINLINE (LOC 1)



**BUTT JOINT DETAIL**

- STA. 491+35 TO STA. 492+00 RAMP 2 (LOC 1)
- STA. 340+48 TO STA. 341+13 RAMP 3 (LOC 2)
- STA. 712+50 TO STA. 713+15 RAMP 7 (LOC 2)
- STA. 1614+52 TO STA. 1615+17 MAINLINE - SB (LOC 2)
- STA. 1598+00 TO STA. 1598+65 MAINLINE - NB (LOC 2)
- STA. 1556+00 TO STA. 1556+65 MAINLINE - NB&SB (LOC 2)
- STA. 1589+00 TO STA. 1589+65 RAMP 1 (LOC 2)

PLOT DATE = 5/25/2007  
 FILE NAME = c:\pcc\mca\ad88387\road\pcc\ad88387.dgn  
 PLOT SCALE = 50.0000 / IN.  
 USER NAME = chellandake

Rev. Sheet 6-5-07

REVISIONS	
NAME	DATE

ILLINOIS DEPARTMENT OF TRANSPORTATION  
**BUTT JOINT DETAILS AND PARTIAL DEPTH PATCHING DETAIL**  
 FAI 255, FAI 55/70  
 SECTION (60-7, 60-9)RS & 60-(6-1,7-1)RS  
 MADISON COUNTY  
 SCALE: VERT. HORIZ.  
 DATE DRAWN BY CHECKED BY