

F.A.U. RTE.	SECTION	COUNTY	TOTAL SHEETS	SHEET NO.
2509	96-00094-01-WR	KANE	187	1

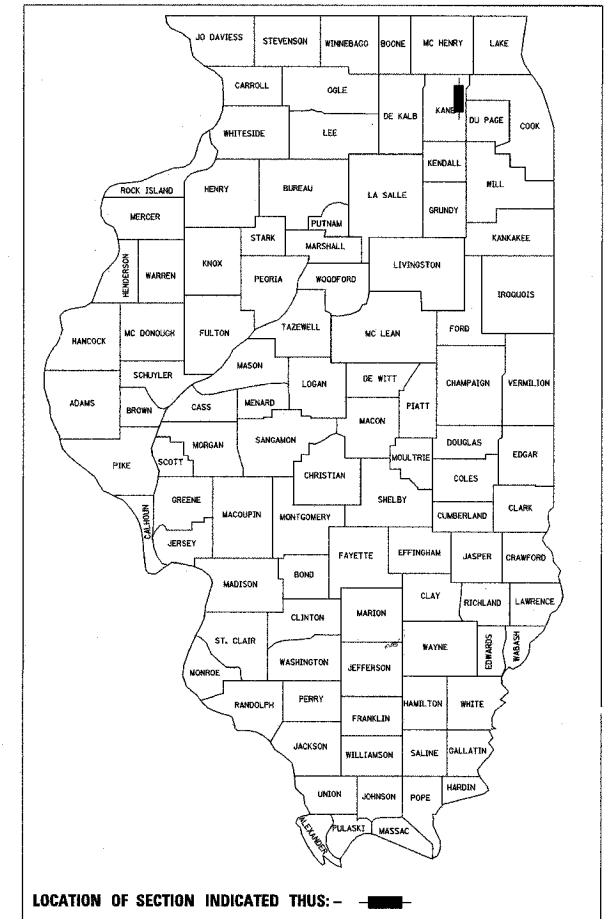
# KANE COUNTY

## STATE OF ILLINOIS

# PROPOSED FEDERAL AID ROADWAY RECONSTRUCTION

FAU ROUTE 2509 (SOUTH MCLEAN BOULEVARD)  
SOUTH OF HOPPS RD/SPRING ST. TO NORTH OF BOWES RD.

SECTION NO. 96-00094-01-WR  
PROJECT CMM-M-7003(372)  
C-91-312-96



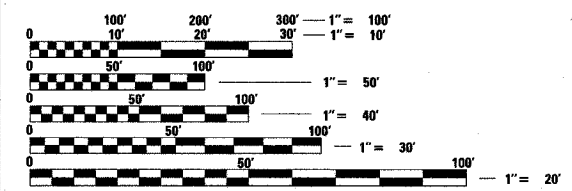
**INDEX OF SHEETS**

FROM SHEET	TO SHEET	DESCRIPTION
1	1	COVER SHEET
2	3	GENERAL NOTES AND STANDARDS
4	9	SUMMARY OF QUANTITIES
10	10	EXISTING TYPICAL SECTIONS
11	12	PROPOSED TYPICAL SECTIONS
13	18	SCHEDULE OF QUANTITIES
19	21	ALIGNMENT, TIES AND BENCHMARKS
22	50	SUGGESTED MAINTENANCE OF TRAFFIC
51	70	EROSION CONTROL PLANS
71	85	ROADWAY PLANS AND PROFILES
86	86	INTERSECTION GRADING DETAILS
87	101	DRAINAGE AND UTILITY PLANS AND PROFILES
102	103	CONSTRUCTION DETAILS
104	106	PAVEMENT MARKINGS, SIGNING AND LANDSCAPING PLANS AND DETAILS
107	110	TEMPORARY TRAFFIC SIGNAL/CABLE AND PHASE DESIGNATION PLANS
111	116	PERMANENT TRAFFIC SIGNAL/CABLE AND PHASE DESIGNATION PLANS
117	119	TRAFFIC SIGNAL INTERCONNECT PLANS
120	120	TRAFFIC SIGNAL PLAN DETAILS
121	125	LIGHTING RELOCATION AND REMOVAL PLANS
126	129	LIGHTING PLANS AND DETAILS
130	132	RETAINING WALL PLANS AND DETAILS
133	133	DISTRICT 1 MAST ARM MOUNTED STREET NAME SIGNS
134	149	DISTRICT 1 DETAILS
150	176	CROSS SECTIONS - MCLEAN
177	183	CROSS SECTIONS - SPRING
184	187	CROSS SECTIONS - BOWES

**DESIGN DESIGNATION:**

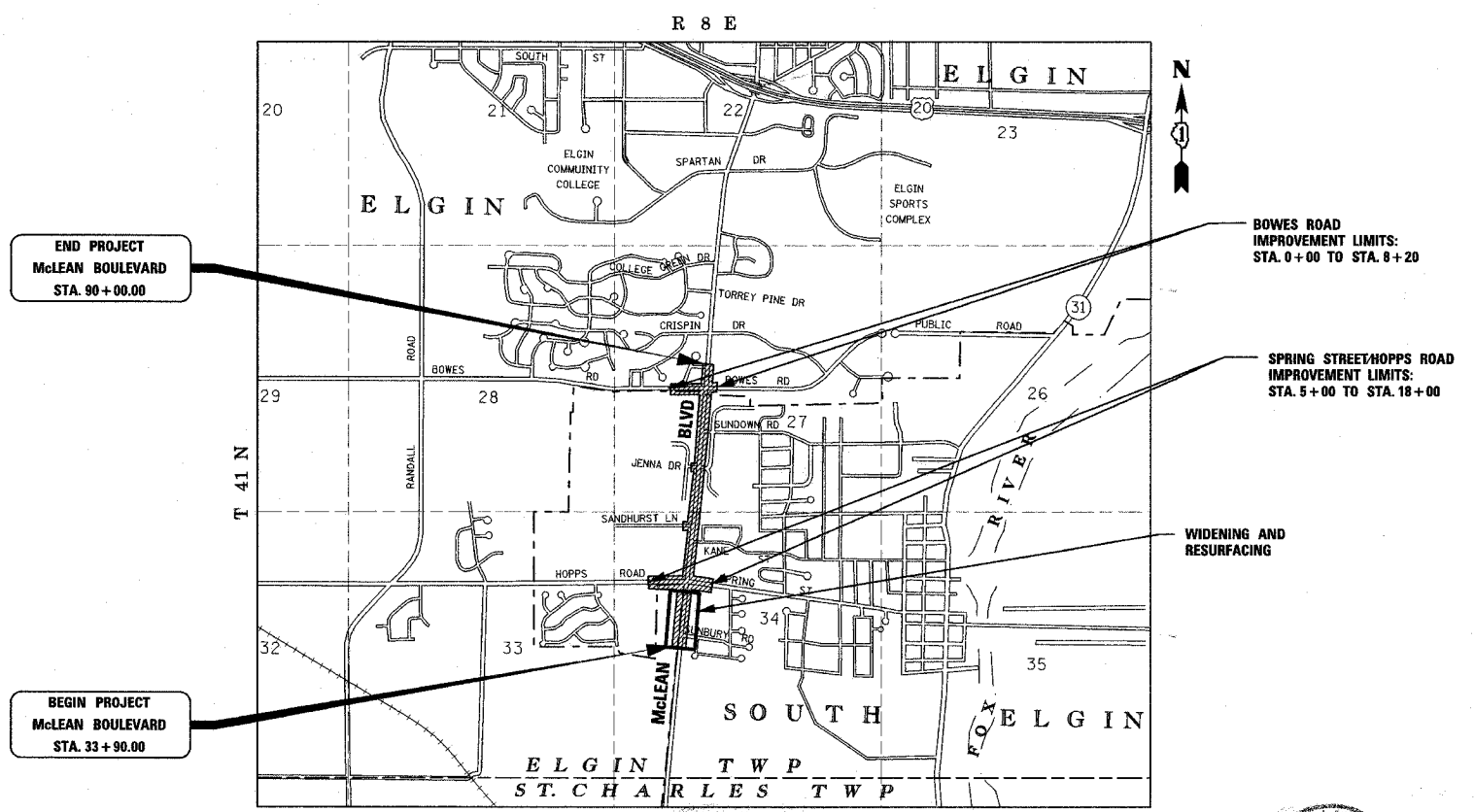
3760(20) 40,000 ARTERIAL 4.90 (FD-20)  
DESIGN SPEED = 45 MPH  
POSTED SPEED = 45 MPH

SCALES: PLAN: 1" = 20'  
PROFILE, HORIZ.: 1" = 20'  
PROFILE, VERT.: 1" = 5'  
CROSS SECTIONS, HORIZ.: 1" = 10'  
CROSS SECTIONS, VERT.: 1" = 5'



FULL SIZE PLANS HAVE BEEN PREPARED USING STANDARD ENGINEERING SCALES. REDUCED SIZED PLANS WILL NOT CONFORM TO STANDARD SCALES. IN MAKING MEASUREMENTS ON REDUCED PLANS, THE ABOVE SCALES MAY BE USED.

J.U.L.I.E.  
JOINT UTILITY LOCATION INFORMATION FOR EXCAVATION  
1-800-892-0123



LOCATION MAP (NOT TO SCALE)

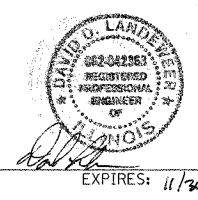
GROSS LENGTH OF IMPROVEMENT = 1.099 MILES  
NET PROJECT LENGTH = 1.099 MILES

**KANE COUNTY**

APPROVED April 5 2007  
*[Signature]*  
KANE COUNTY

PASSED April 11 2007  
*[Signature]* CHRISTOPHER HOLT  
ENGINEER OF LOCAL ROADS AND STREETS

RELEASING FOR BID  
BASED ON LIMITED REVIEW April 12 2007  
*[Signature]*  
DEPUTY DIRECTOR OF HIGHWAYS/REGION 1 ENGINEER



DATE: 4/4/07

FEDERAL AID DESIGN ENGINEER: JESSICA FELICIANO 847-705-4487 URS DESIGN ENGINEER: DAVID LANDEWEER 312-935,1000