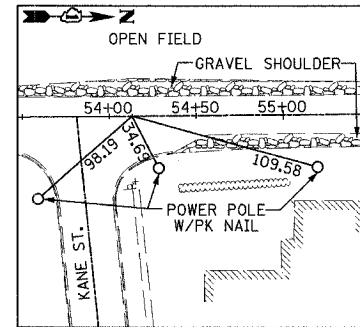


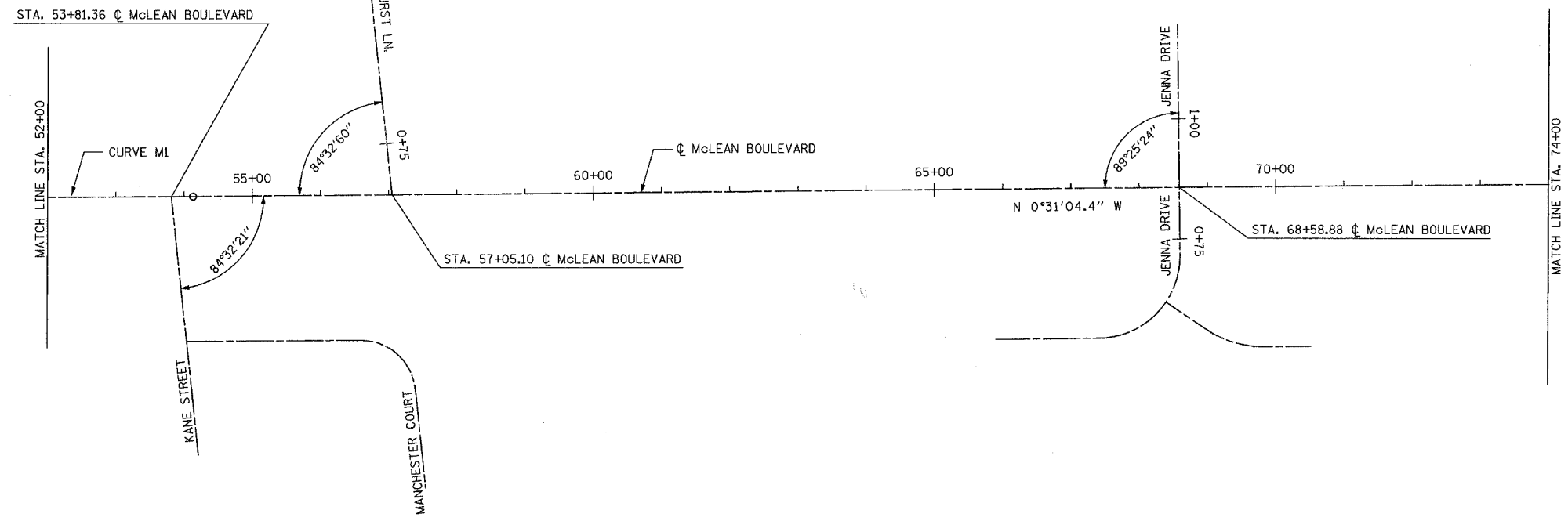
CONTRACT NO. 83737

F.A.U. RTE.	SECTION	COUNTY	TOTAL SHEETS	SHEET NO.
2509	96-00094-01-WR	KANE	187	20
STA.		TO STA.		
FED. ROAD DIST. NO.		ILLINOIS FED. AID PROJECT		



TIE AT STATION 54+13.20

CURVE M1
P.I. STA = 48+88.03
DELTA = 0°47'16"
D = 0°04'30"
R = 76392.85
T = 525.19
L = 1050.37
E = 1.81
S.E. = NORMAL CROWN
T.R. = N/A
S.E. RUN = N/A
P.C. STA = 43+62.84
P.T. STA = 54+13.20



NOTE: FOR BENCHMARKS DESCRIPTION AND LOCATION SEE SHEET NO. 19.

CONTRACTOR SHALL REESTABLISH ANY TIE POINTS THAT COULD BE DISTURBED OR DISPLACED BY CONSTRUCTION ACTIVITIES.

REVISIONS	
NAME	DATE

URS 100 SOUTH WACKER DRIVE TEL (312) 939-1000
SUITE 500 CHICAGO, IL 60606 FAX (312) 939-4198

McLEAN BOULEVARD
ALIGNMENT, TIES AND BENCHMARKS

SCALE: DATE 04/06/2007 DRAWN BY 501 CHECKED BY