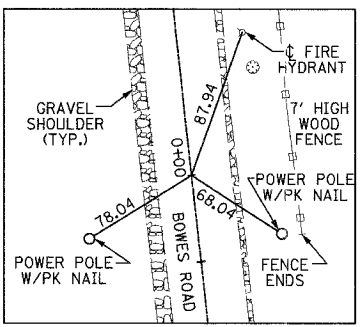
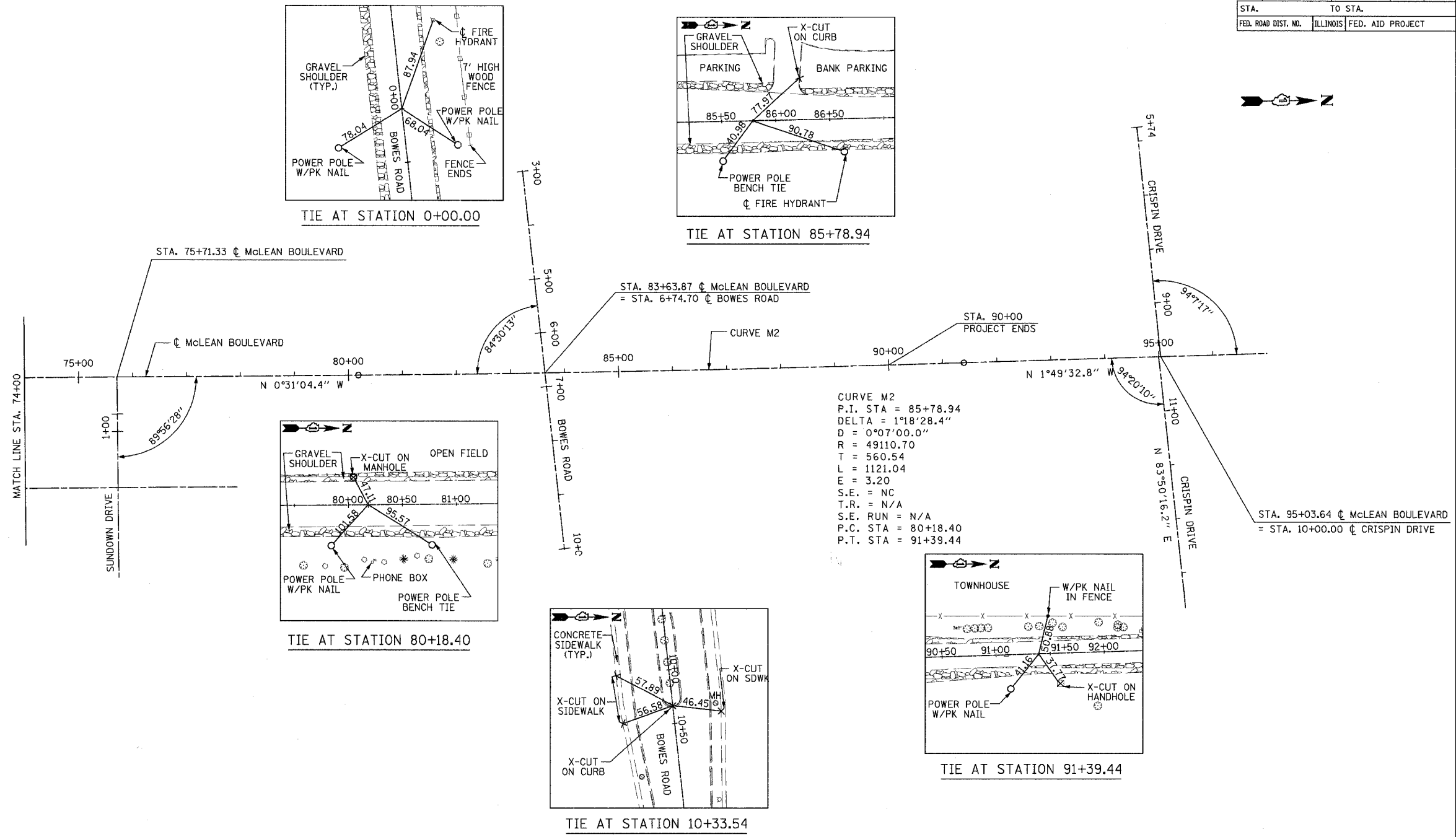
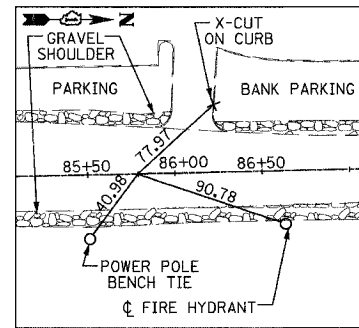


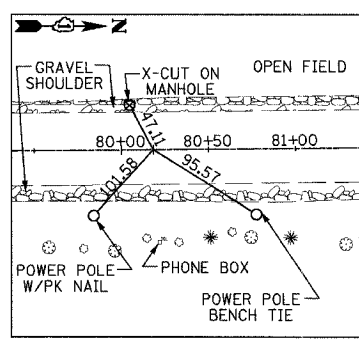
F.A.U. RTE.	SECTION	COUNTY	TOTAL SHEETS	SHEET NO.
2509	96-00094-01-WR	KANE	187	21
STA.		TO STA.		
FED. ROAD DIST. NO.	ILLINOIS	FED. AID PROJECT		



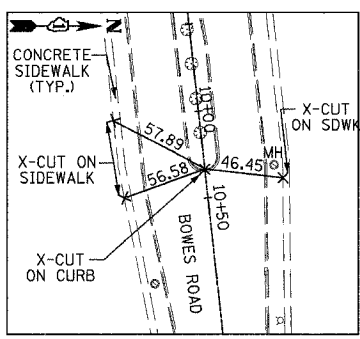
TIE AT STATION 0+00.00



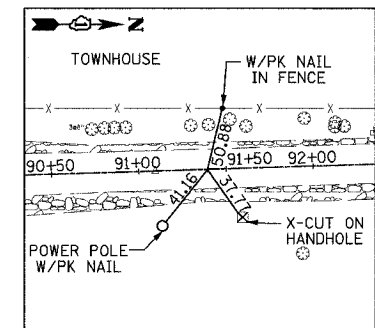
TIE AT STATION 85+78.94



TIE AT STATION 80+18.40



TIE AT STATION 10+33.54



TIE AT STATION 91+39.44

CURVE M2
 P.I. STA = 85+78.94
 DELTA = 1°18'28.4"
 D = 0°07'00.0"
 R = 49110.70
 T = 560.54
 L = 1121.04
 E = 3.20
 S.E. = NC
 T.R. = N/A
 S.E. RUN = N/A
 P.C. STA = 80+18.40
 P.T. STA = 91+39.44

NOTE: FOR BENCHMARKS DESCRIPTION AND LOCATION SEE SHEET NO. 19.

CONTRACTOR SHALL REESTABLISH ANY TIE POINTS THAT COULD BE DISTURBED OR DISPLACED BY CONSTRUCTION ACTIVITIES.

REVISIONS	
NAME	DATE

URS 100 SOUTH WACKER DRIVE
 SUITE 500 TEL (312) 939-1000
 CHICAGO, IL 60606 FAX (312) 939-4198

McLEAN BOULEVARD
 ALIGNMENT, TIES AND BENCHMARKS

SCALE: DRAWN BY SOI
 DATE 04/06/2007 CHECKED BY