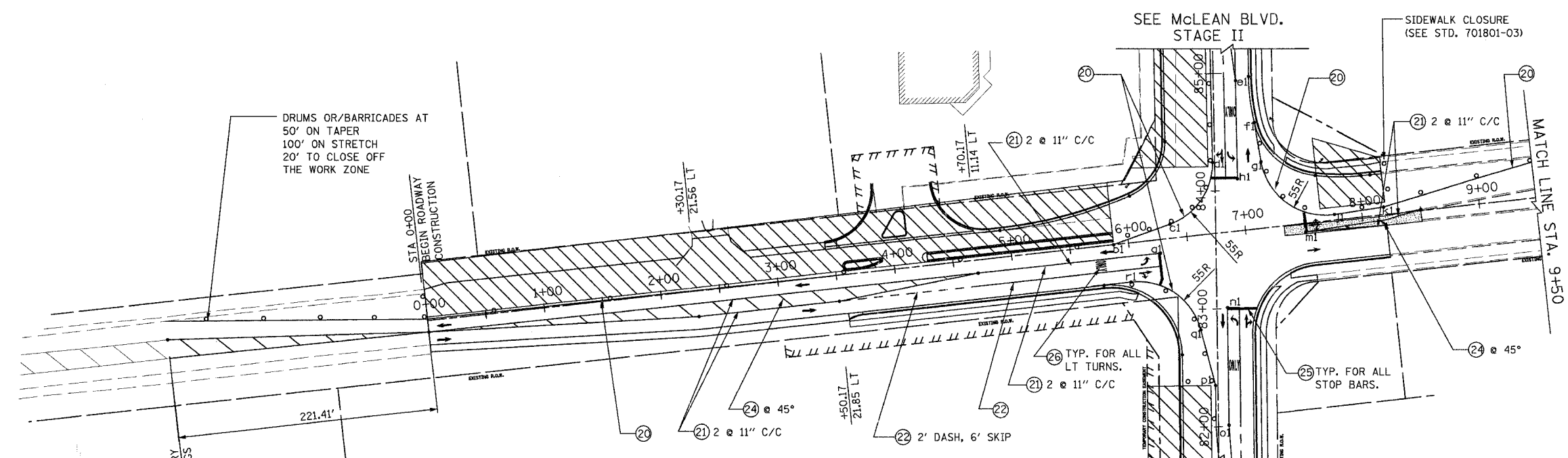
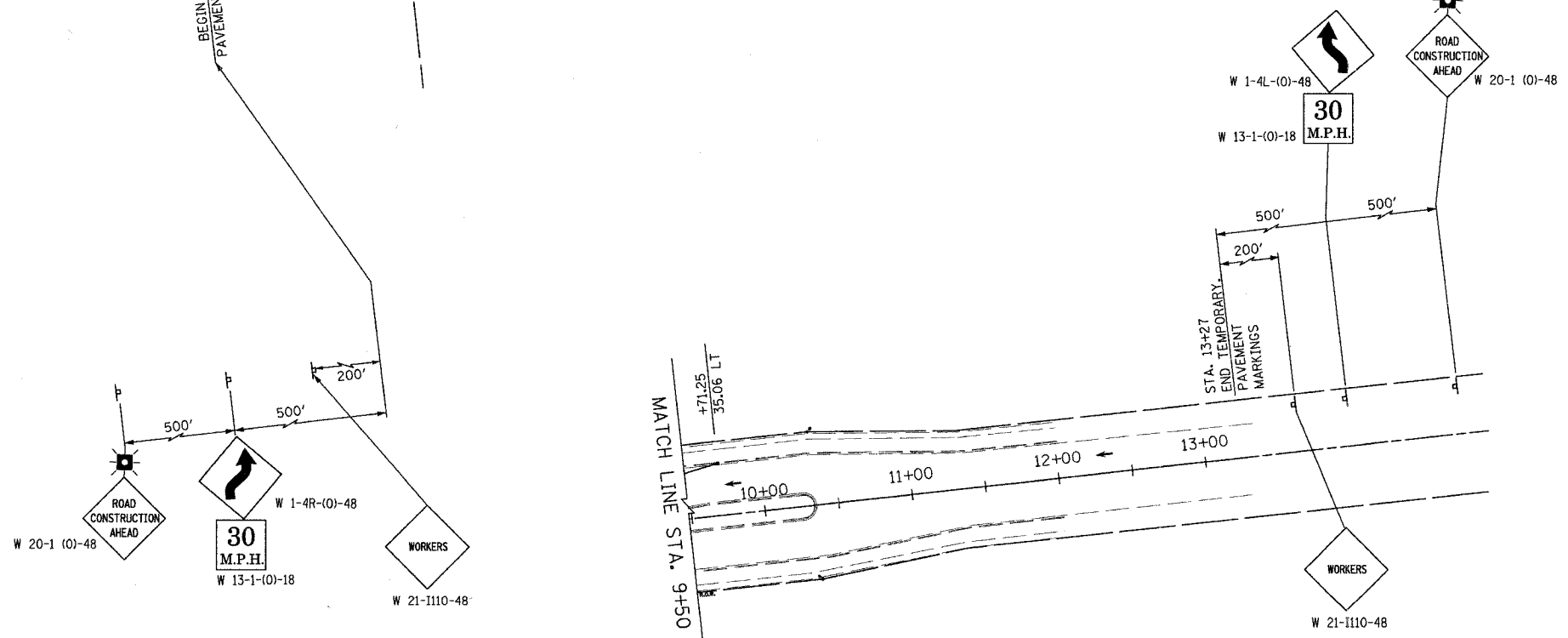


CONTRACT NO. 83737				
F.A.I.D. RTE.	SECTION	COUNTY	TOTAL SHEETS	SHEET NO.
2509	96-00094-01-WR	KANE	187	46
STA.		TO STA.		
FED. ROAD DIST. NO.	ILLINOIS	FED. AID PROJECT		



POINTS	STA & OFFSET	POINTS	STA & OFFSET
a1	6+26.08, 11.51 RT	p1	+35.00, 2.00 LT
b1	5+87.28	q1	+82.37, 13.92 LT
c1	6+36.78, 12.08 LT	r1	5+98.69, 33.00 RT
d1	+24.48, 1.88 LT		
e1	+93.68, 19.00 RT		
f1	+57.70, 34.34 RT		
g1	+24.34, 39.45 RT		
h1	+09.81, 19.16 RT		
j1	7+76.73, 4.82 LT		
k1	+18.86, 6.48 LT		
m1	7+50.75, 7.33 RT		
n1	+00.99, 9.02 RT		
o1	+01.01, 8.99 RT		

ALL LANES ARE 11 FT WIDTH UNLESS NOTED OTHERWISE.



FOR PAVEMENT MARKING DESCRIPTION AND LEGEND SEE SHEET NO. 22.

		100 SOUTH WACKER DRIVE SUITE 500 CHICAGO, IL 60606 TEL (312) 939-1000 FAX (312) 939-4198
McLEAN BOULEVARD SUGGESTED MAINTENANCE OF TRAFFIC BOWES ROAD STAGE II		
REVISIONS NAME DATE 	SCALE: DATE 04/06/2007	DRAWN BY CHECKED BY