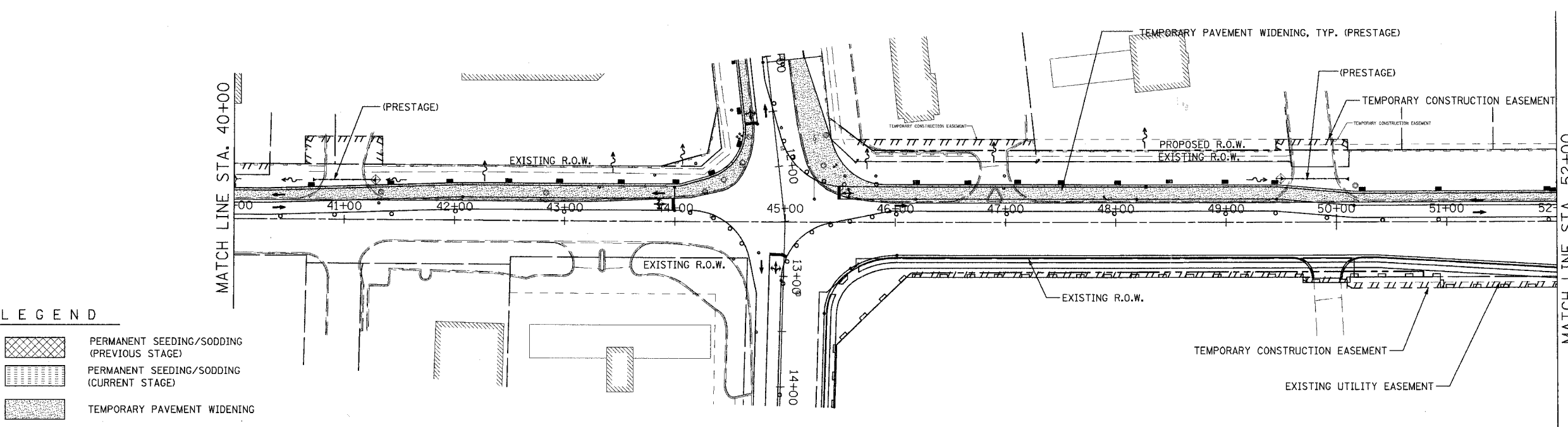
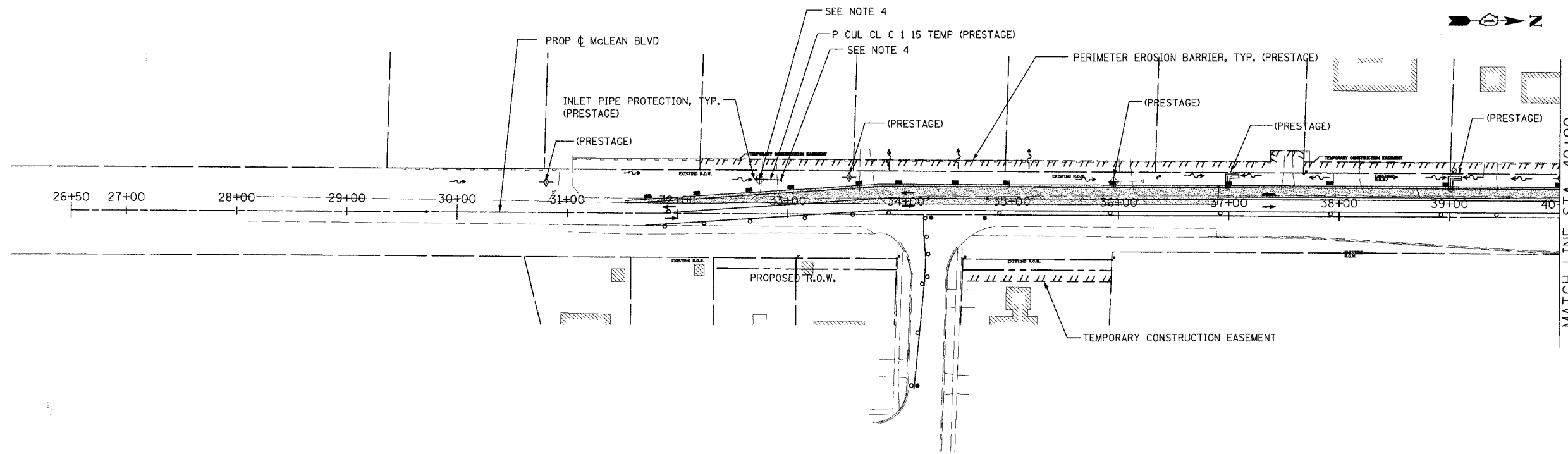
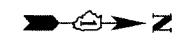


CONTRACT NO. 83737

F.A.U. RTE.	SECTION	COUNTY	TOTAL SHEETS	SHEET NO.
2509	96-00094-01-WR	KANE	187	56
STA.		TO STA.		
FED. ROAD DIST. NO.		ILLINOIS FED. AID PROJECT		



LEGEND

- PERMANENT SEEDING/SODDING (PREVIOUS STAGE)
- PERMANENT SEEDING/SODDING (CURRENT STAGE)
- TEMPORARY PAVEMENT WIDENING
- PERIMETER EROSION BARRIER (PREVIOUS STAGE)
- PERIMETER EROSION BARRIER (CURRENT STAGE)
- INLET PIPE PROTECTION
- DITCH CHECK (TEMPORARY)
- FLOW DIRECTION
- DIRECTION OF TRAFFIC FLOW

NOTES:

1. THE RESIDENT ENGINEER SHALL HAVE THE FINAL DETERMINATION OF THE PLACEMENT AND LOCATION OF THE PERIMETER EROSION BARRIER
2. SEE SUGGESTED MAINTENANCE OF TRAFFIC PLANS FOR ADDITIONAL INFORMATION REGARDING THE SEQUENCE OF CONSTRUCTION.
3. NOT ALL DRAINAGE STRUCTURES ARE SHOWN. SEE DRAINAGE PLANS FOR ADDITIONAL INFORMATION.
4. FLARED END SECTIONS FOR THE TEMPORARY PIPE CULVERTS ARE OMITTED INTENTIONALLY.
5. MAINTAIN THE PROTECTION MEASURES FROM THE PREVIOUS STAGE UNTIL THE REMOVAL IS ABSOLUTELY NECESSARY.

REVISIONS	
NAME	DATE

URS 100 SOUTH WACKER DRIVE SUITE 500 CHICAGO, IL 60606 TEL (312) 939-1000 FAX (312) 939-4198

McLEAN BOULEVARD
EROSION CONTROL PLAN
STAGE I

SCALE: DATE 04/06/2007 DRAWN BY KLM CHECKED BY MHL