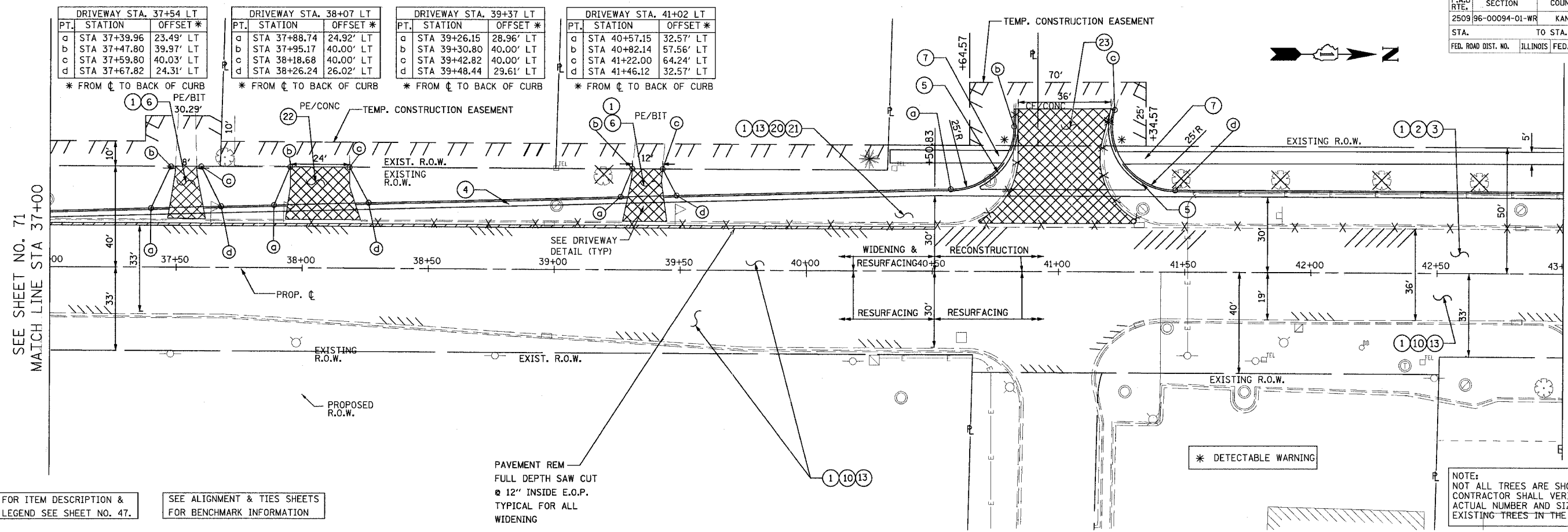


CONTRACT NO. 83737				
F.A.U. RTE.	SECTION	COUNTY	TOTAL SHEETS	SHEET NO.
250996-00094-01-WR		KANE	187	72
STA.		TO STA.		
FED. ROAD DIST. NO.		ILLINOIS FED. AID PROJECT		



FOR ITEM DESCRIPTION & LEGEND SEE SHEET NO. 47.

SEE ALIGNMENT & TIES SHEETS FOR BENCHMARK INFORMATION

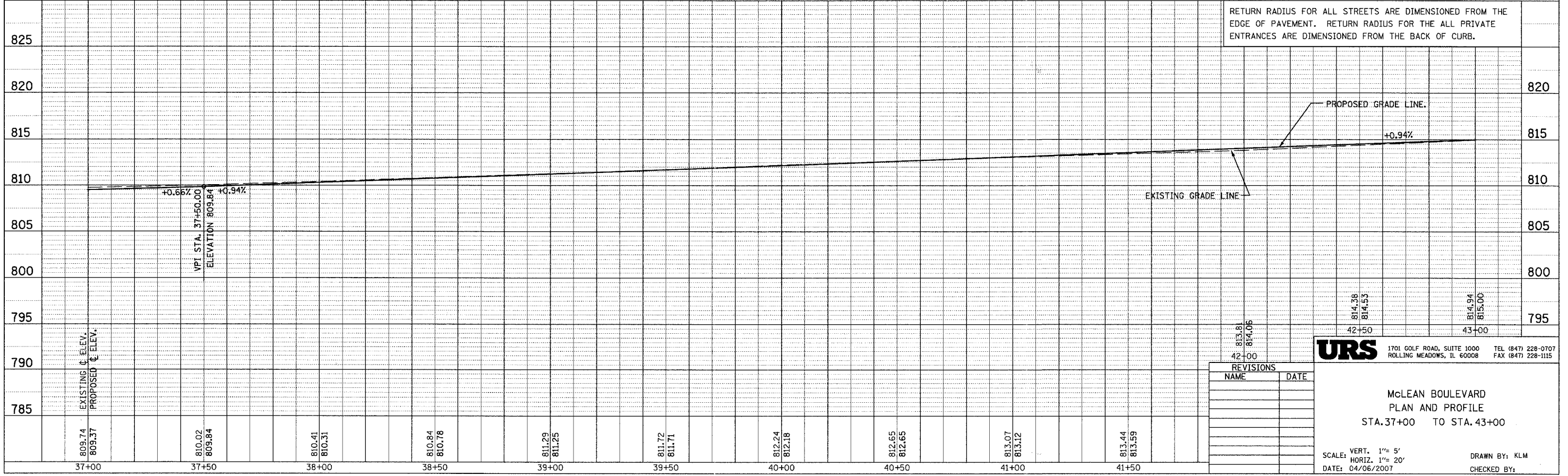
PAVEMENT REM FULL DEPTH SAW CUT 12" INSIDE E.O.P. TYPICAL FOR ALL WIDENING

* DETECTABLE WARNING

NOTE: NOT ALL TREES ARE SHOWN. CONTRACTOR SHALL VERIFY THE ACTUAL NUMBER AND SIZE OF EXISTING TREES IN THE FIELD.

DATE	
BY	
PLAN	
SURVEYED	
PLOTTED	
CHECKED	
DATE	
NO.	

DATE	
BY	
PROFILE	
SURVEYED	
PLOTTED	
CHECKED	
DATE	
NO.	



RETURN RADIUS FOR ALL STREETS ARE DIMENSIONED FROM THE EDGE OF PAVEMENT. RETURN RADIUS FOR THE ALL PRIVATE ENTRANCES ARE DIMENSIONED FROM THE BACK OF CURB.

REVISIONS	
NAME	DATE

URS 1701 GOLF ROAD, SUITE 1000 TEL (847) 228-0707
 ROLLING MEADOWS, IL 60008 FAX (847) 228-1115

MCLEAN BOULEVARD
 PLAN AND PROFILE
 STA. 37+00 TO STA. 43+00

SCALE: VERT. 1"= 5'
 HORIZ. 1"= 20'
 DATE: 04/06/2007
 DRAWN BY: KLM
 CHECKED BY: