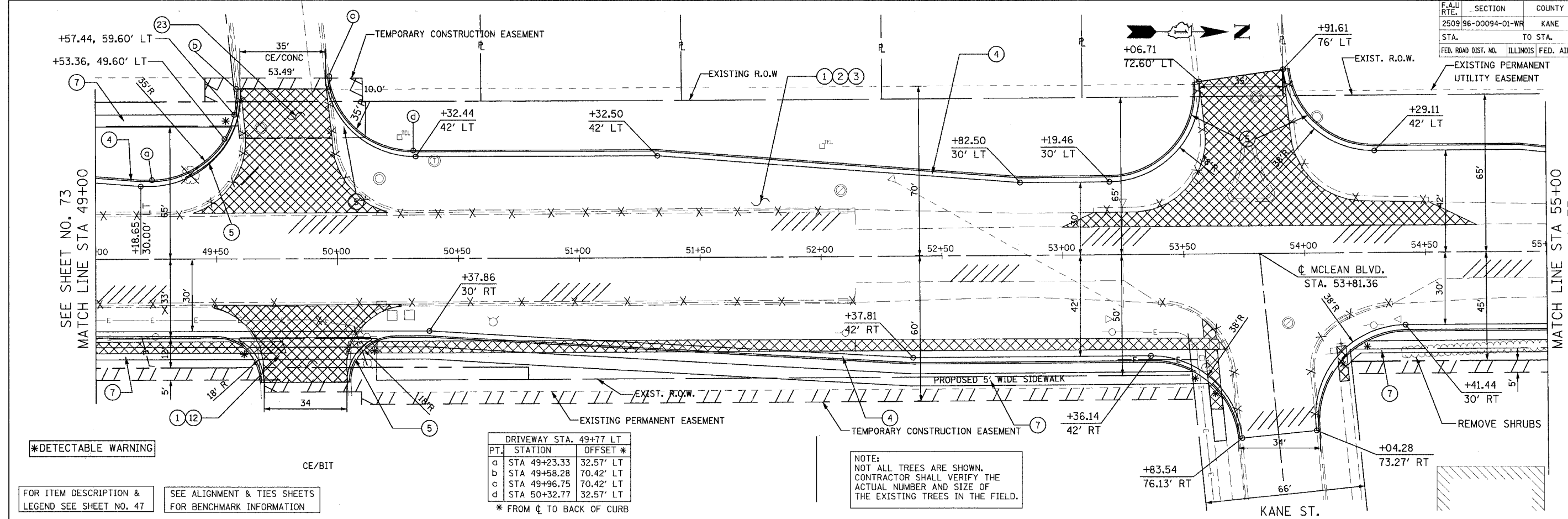


CONTRACT NO. 83737				
F.A.U. RTE.	SECTION	COUNTY	TOTAL SHEETS	SHEET NO.
2509	96-00094-01-WR	KANE	187	74
STA. TO STA.			ILLINOIS FED. AID PROJECT	
FED. ROAD DIST. NO. KANE COUNTY				



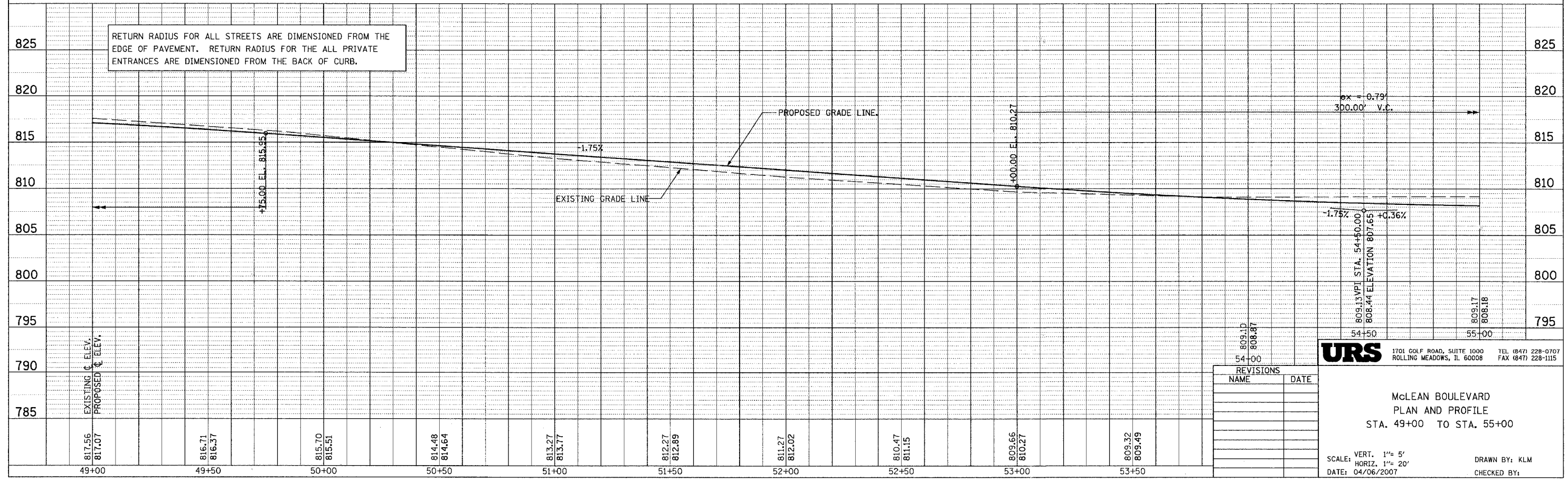
DRIVEWAY STA. 49+77 LT

PT.	STATION	OFFSET *
a	STA 49+23.33	32.57' LT
b	STA 49+58.28	70.42' LT
c	STA 49+96.75	70.42' LT
d	STA 50+32.77	32.57' LT

* FROM \ominus TO BACK OF CURB

NOTE:
NOT ALL TREES ARE SHOWN.
CONTRACTOR SHALL VERIFY THE
ACTUAL NUMBER AND SIZE OF
THE EXISTING TREES IN THE FIELD.

*DETECTABLE WARNING
CE/BIT
FOR ITEM DESCRIPTION &
LEGEND SEE SHEET NO. 47
SEE ALIGNMENT & TIES SHEETS
FOR BENCHMARK INFORMATION



RETURN RADIUS FOR ALL STREETS ARE DIMENSIONED FROM THE
EDGE OF PAVEMENT. RETURN RADIUS FOR THE ALL PRIVATE
ENTRANCES ARE DIMENSIONED FROM THE BACK OF CURB.

REVISIONS	
NAME	DATE

URS 1701 GOLF ROAD, SUITE 1000 TEL (847) 228-0707
ROLLING MEADOWS, IL 60008 FAX (847) 228-1115

McLEAN BOULEVARD
PLAN AND PROFILE
STA. 49+00 TO STA. 55+00
SCALE: VERT. 1" = 5'
HORIZ. 1" = 20'
DATE: 04/06/2007
DRAWN BY: KLM
CHECKED BY:

PLAN

NO.	DATE	BY

REVISIONS
DATE

PROFILE

NO.	DATE	BY