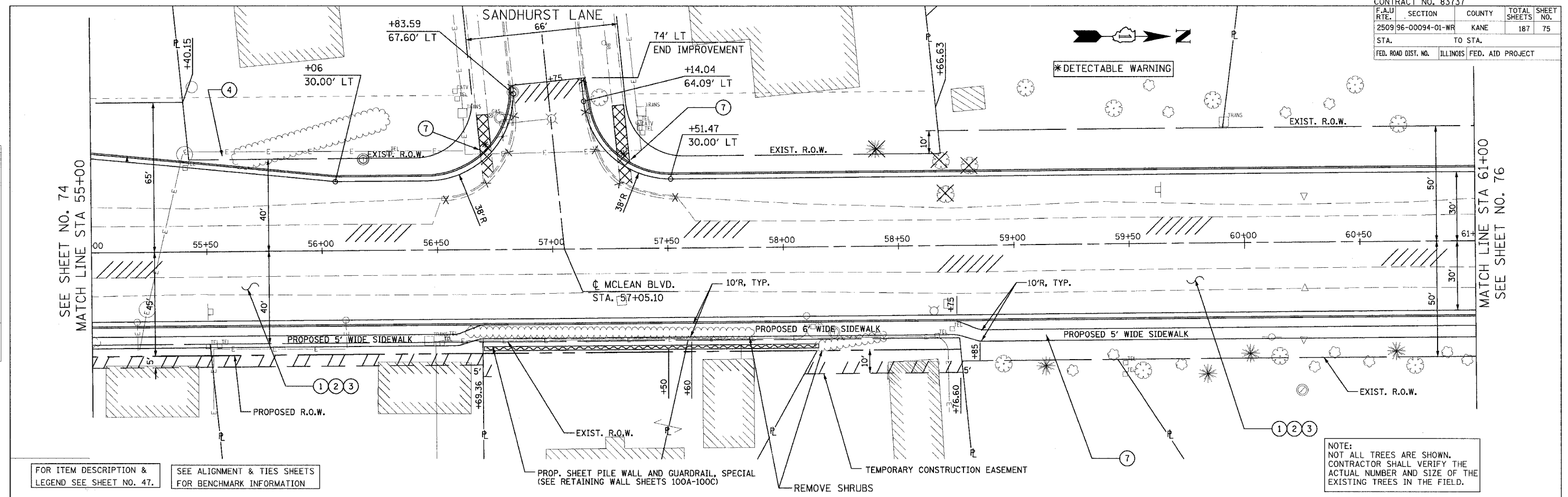


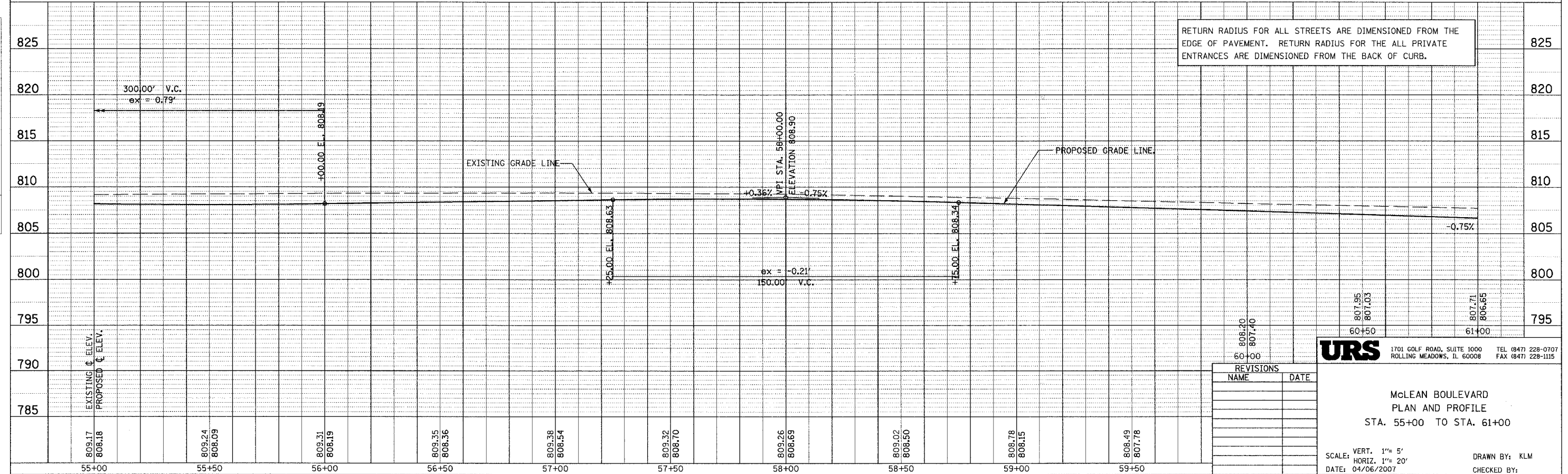
CONTRACT NO. 83737				
F.A.U. R.T.E.	SECTION	COUNTY	TOTAL SHEETS	SHEET NO.
2509196-00094-01-WR		KANE	187	75
STA.	TO STA.			
FED. ROAD DIST. NO.	ILLINOIS FED. AID PROJECT			



FOR ITEM DESCRIPTION & LEGEND SEE SHEET NO. 47.

SEE ALIGNMENT & TIES SHEETS FOR BENCHMARK INFORMATION

NOTE:
 NOT ALL TREES ARE SHOWN.
 CONTRACTOR SHALL VERIFY THE ACTUAL NUMBER AND SIZE OF THE EXISTING TREES IN THE FIELD.



RETURN RADIUS FOR ALL STREETS ARE DIMENSIONED FROM THE EDGE OF PAVEMENT. RETURN RADIUS FOR THE ALL PRIVATE ENTRANCES ARE DIMENSIONED FROM THE BACK OF CURB.

REVISIONS	
NAME	DATE

URS 1701 GOLF ROAD, SUITE 1000 TEL (847) 228-0707
 ROLLING MEADOWS, IL 60008 FAX (847) 228-1115

**McLEAN BOULEVARD
 PLAN AND PROFILE
 STA. 55+00 TO STA. 61+00**

SCALE: VERT. 1"= 5'
 HORIZ. 1"= 20'
 DATE: 04/06/2007

DRAWN BY: KLM
 CHECKED BY:

PLAN	DATE	BY
REVISIONS		
NO. 1		
NO. 2		
NO. 3		

PROFILE	DATE	BY
REVISIONS		
NO. 1		
NO. 2		
NO. 3		