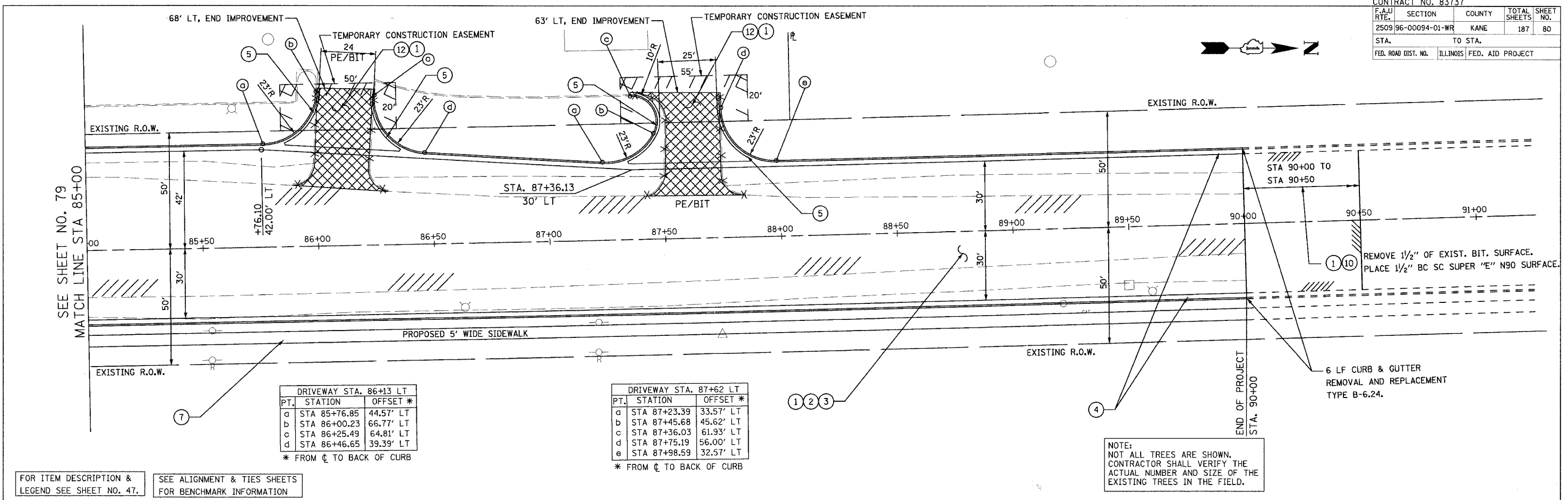


CONTRACT NO. 83737				
F.A.U. RTE.	SECTION	COUNTY	TOTAL SHEETS	SHEET NO.
2509196-00094-01-WR		KANE	187	80
STA.	TO STA.			
FED. ROAD DIST. NO.	ILLINOIS	FED. AID PROJECT		



DRIVEWAY STA. 86+13 LT

PT.	STATION	OFFSET *
d	STA 85+76.85	44.57' LT
b	STA 86+00.23	66.77' LT
c	STA 86+25.49	64.81' LT
d	STA 86+46.65	39.39' LT

* FROM ϕ TO BACK OF CURB

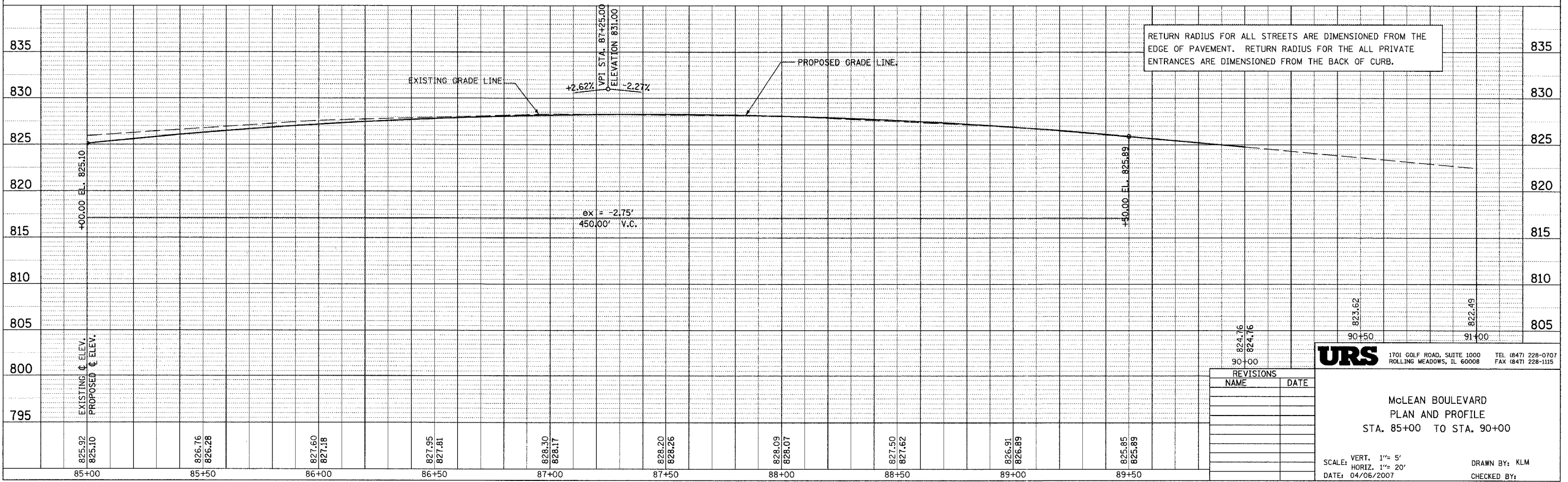
DRIVEWAY STA. 87+62 LT

PT.	STATION	OFFSET *
d	STA 87+23.39	33.57' LT
b	STA 87+45.68	45.62' LT
c	STA 87+36.03	61.93' LT
d	STA 87+75.19	56.00' LT
e	STA 87+98.59	32.57' LT

* FROM ϕ TO BACK OF CURB

NOTE:
NOT ALL TREES ARE SHOWN.
CONTRACTOR SHALL VERIFY THE
ACTUAL NUMBER AND SIZE OF THE
EXISTING TREES IN THE FIELD.

FOR ITEM DESCRIPTION & LEGEND SEE SHEET NO. 47.
SEE ALIGNMENT & TIES SHEETS FOR BENCHMARK INFORMATION



REVISIONS	
NAME	DATE

URS 1701 GOLF ROAD, SUITE 1000 TEL (847) 228-0707
ROLLING MEADOWS, IL 60008 FAX (847) 228-1115

McLEAN BOULEVARD
PLAN AND PROFILE
STA. 85+00 TO STA. 90+00

SCALE: VERT. 1"= 5'
HORIZ. 1"= 20'
DATE: 04/06/2007
DRAWN BY: KLM
CHECKED BY:

DATE	BY
DATE	BY
DATE	BY

DATE	BY
DATE	BY
DATE	BY