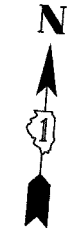


CONTRACT NO. 83737				
F.A.U. RTE.	SECTION	COUNTY	TOTAL SHEETS	SHEET NO.
2509/96-00094-01-WR		KANE	187	83
STA.		TO STA.		
FED. ROAD DIST. NO.		ILLINOIS FED. AID PROJECT		

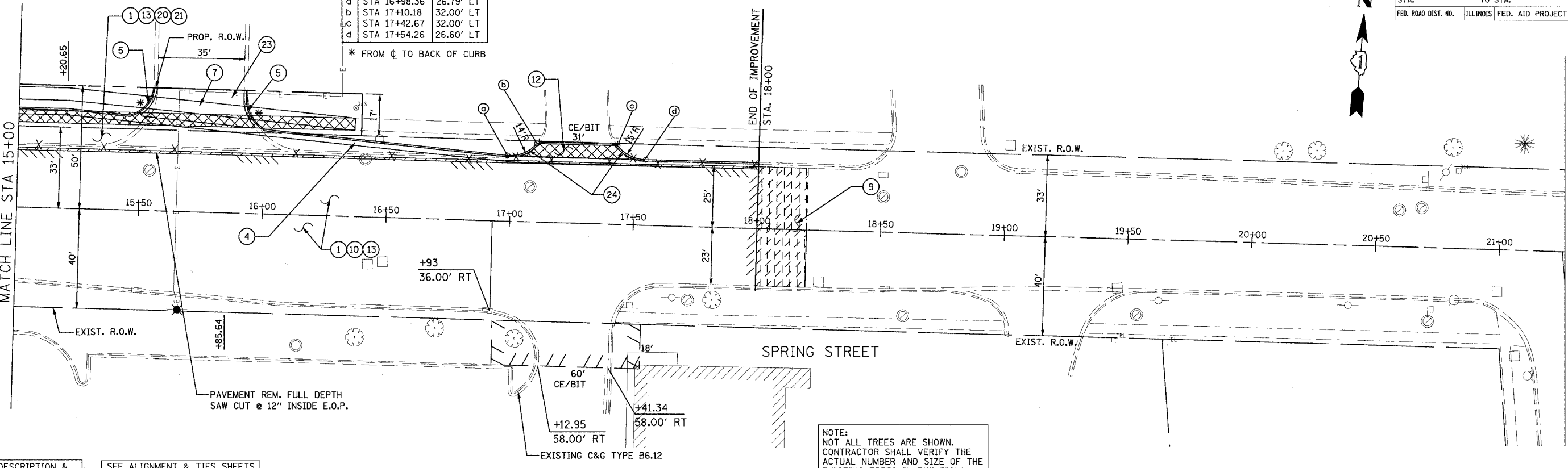


\*DETECTABLE WARNING

DRIVEWAY STA. 17+25 LT		
PT.	STATION	OFFSET *
a	STA 16+98.36	26.79' LT
b	STA 17+10.18	32.00' LT
c	STA 17+42.67	32.00' LT
d	STA 17+54.26	26.60' LT

\* FROM C TO BACK OF CURB

SEE SHEET NO. 82  
MATCH LINE STA 15+00

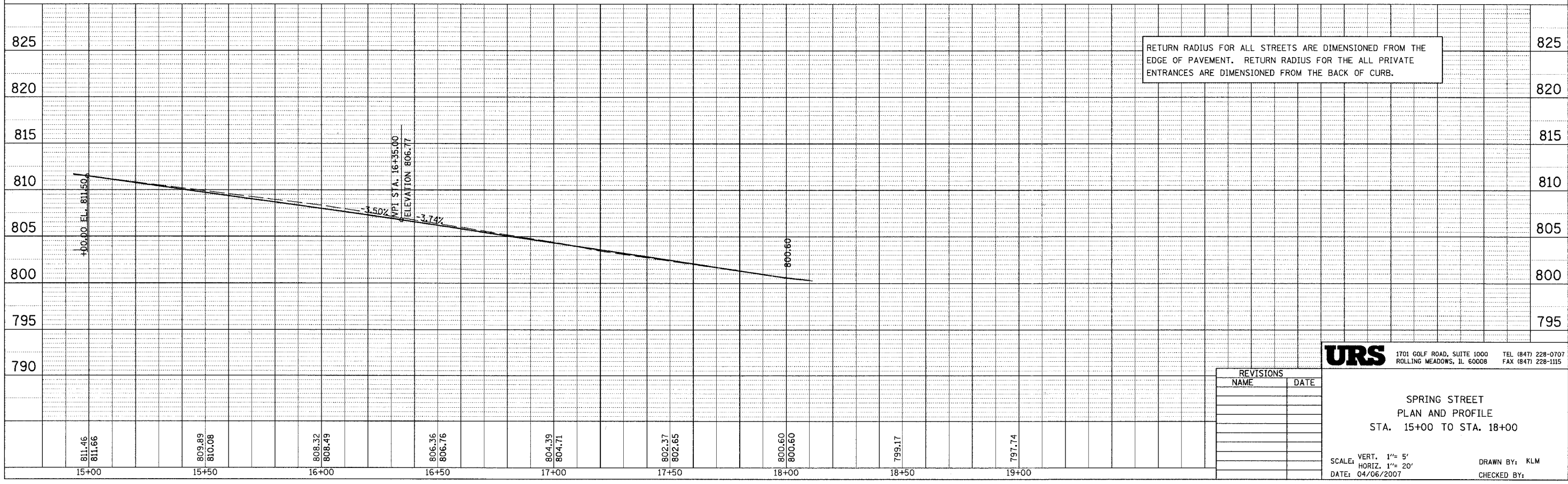


NOTE:  
NOT ALL TREES ARE SHOWN.  
CONTRACTOR SHALL VERIFY THE  
ACTUAL NUMBER AND SIZE OF THE  
EXISTING TREES IN THE FIELD.

FOR ITEM DESCRIPTION &  
LEGEND SEE SHEET NO. 47.

SEE ALIGNMENT & TIES SHEETS  
FOR BENCHMARK INFORMATION

RETURN RADIUS FOR ALL STREETS ARE DIMENSIONED FROM THE  
EDGE OF PAVEMENT. RETURN RADIUS FOR THE ALL PRIVATE  
ENTRANCES ARE DIMENSIONED FROM THE BACK OF CURB.



**URS** 1701 GOLF ROAD, SUITE 1000 TEL (847) 228-0707  
ROLLING MEADOWS, IL 60008 FAX (847) 228-1115

REVISIONS	
NAME	DATE

SPRING STREET  
PLAN AND PROFILE  
STA. 15+00 TO STA. 18+00

SCALE: VERT. 1"= 5'  
HORIZ. 1"= 20'  
DATE: 04/06/2007

DRAWN BY: KLM  
CHECKED BY:

PLAN	SURVEYED	DATE
NOTE BOOK	PLotted	BY
NO.	FILE NAME	

PROFILE	SURVEYED	DATE
NOTE BOOK	PLotted	BY
NO.	FILE NAME	