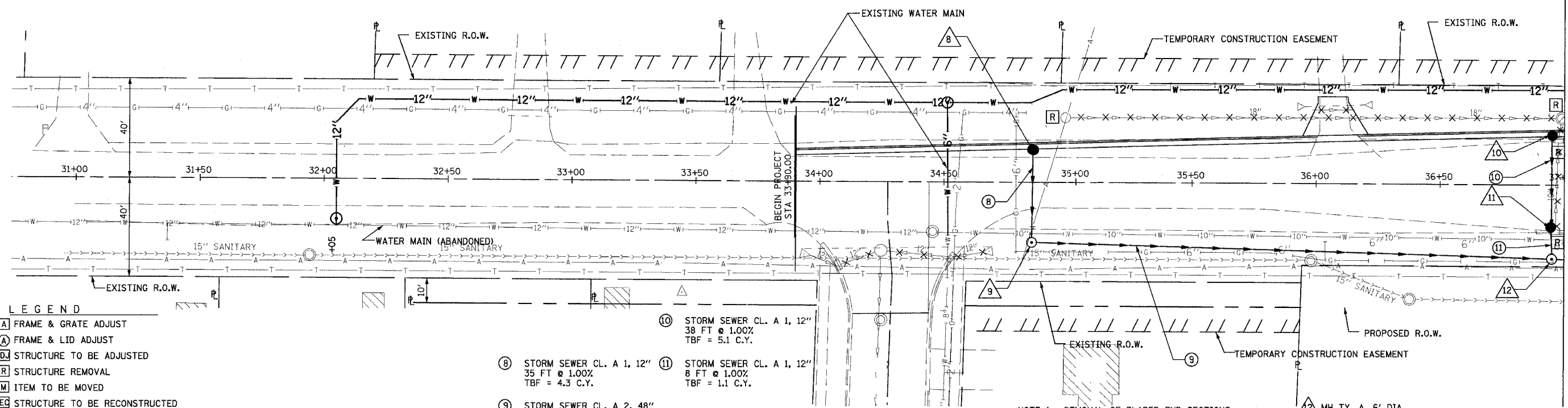


CONTRACT NO. 83737		F.A.U. RTE.	SECTION	COUNTY	TOTAL SHEETS	SHEET NO.
		2509 96-00094-01-WR	KANE		187	87
STA.	TO STA.					
FED. ROAD DIST. NO.	ILLINOIS FED. AID PROJECT					

- 8. CB TY. A, 4' DIA. F&G TYPE 24 STA. 34+86.05, 13.41' RT RIM = 808.15 INV(E) = 804.70
- 9. MH TY. A, 6' DIA. TYPE 1 FRAME, CL. LID STA. 34+86.05, 24.2' RT RIM = 808.10 INV(W) = 804.35 INV(N) = 799.70
- 10. CB TY. A, 4' DIA. F&G TYPE 24 STA. 36+95, 19.4' LT RIM = 809.19 INV(E) = 805.80
- 11. CB TY. A, 4' DIA. F&G TYPE 24 STA. 36+95, 18.18' RT RIM = 809.2 (EXIST. EL.) INV(WE) = 805.42
- 12. MH TY. A, 6' DIA. TYPE 1 FRAME, CL. LID STA. 36+95, 29.9' RT RIM = 809.30 INV(S) = 799.26 INV(N) = 799.26 INV(W) = 805.26



- LEGEND**
- [A] FRAME & GRATE ADJUST
 - [A] FRAME & LID ADJUST
 - [AD] STRUCTURE TO BE ADJUSTED
 - [R] STRUCTURE REMOVAL
 - [M] ITEM TO BE MOVED
 - [REC] STRUCTURE TO BE RECONSTRUCTED
 - WATER MAIN REMOVAL
 - STORM SEWER REMOVAL

- 10. STORM SEWER CL. A 1, 12" 38 FT @ 1.00% TBF = 5.1 C.Y.
- 11. STORM SEWER CL. A 1, 12" 8 FT @ 1.00% TBF = 1.1 C.Y.
- 8. STORM SEWER CL. A 1, 12" 35 FT @ 1.00% TBF = 4.3 C.Y.
- 9. STORM SEWER CL. A 2, 48" 203 FT @ 0.20% TBF = 360.2 C.Y.

NOTE 1: REMOVAL OF FLARED END SECTIONS ARE PAID FOR AS STORM SEWER REMOVAL TYPICAL FOR ALL FLARED END SECTIONS UNDER ROADWAY.

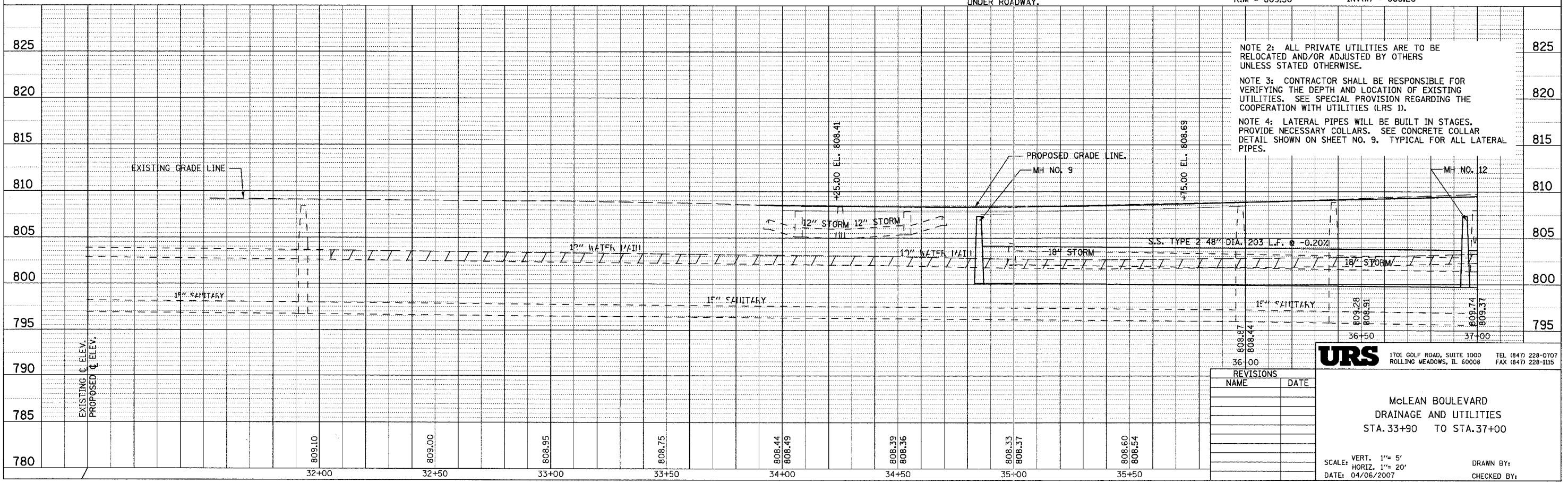
NOTE 2: ALL PRIVATE UTILITIES ARE TO BE RELOCATED AND/OR ADJUSTED BY OTHERS UNLESS STATED OTHERWISE.

NOTE 3: CONTRACTOR SHALL BE RESPONSIBLE FOR VERIFYING THE DEPTH AND LOCATION OF EXISTING UTILITIES. SEE SPECIAL PROVISION REGARDING THE COOPERATION WITH UTILITIES (LRS 1).

NOTE 4: LATERAL PIPES WILL BE BUILT IN STAGES. PROVIDE NECESSARY COLLARS. SEE CONCRETE COLLAR DETAIL SHOWN ON SHEET NO. 9. TYPICAL FOR ALL LATERAL PIPES.

DATE	
BY	
PLAN	
REVISIONS	
NO.	
DATE	
BY	
PROFILE	
REVISIONS	
NO.	
DATE	
BY	

DATE	
BY	
PROFILE	
REVISIONS	
NO.	
DATE	
BY	



REVISIONS	
NAME	DATE

URS 1701 GOLF ROAD, SUITE 1000 ROLLING MEADOWS, IL 60008 TEL (847) 228-0707 FAX (847) 228-1115

McLEAN BOULEVARD DRAINAGE AND UTILITIES STA. 33+90 TO STA. 37+00

SCALE: VERT. 1" = 5' HORIZ. 1" = 20'
 DATE: 04/06/2007
 DRAWN BY: _____ CHECKED BY: _____