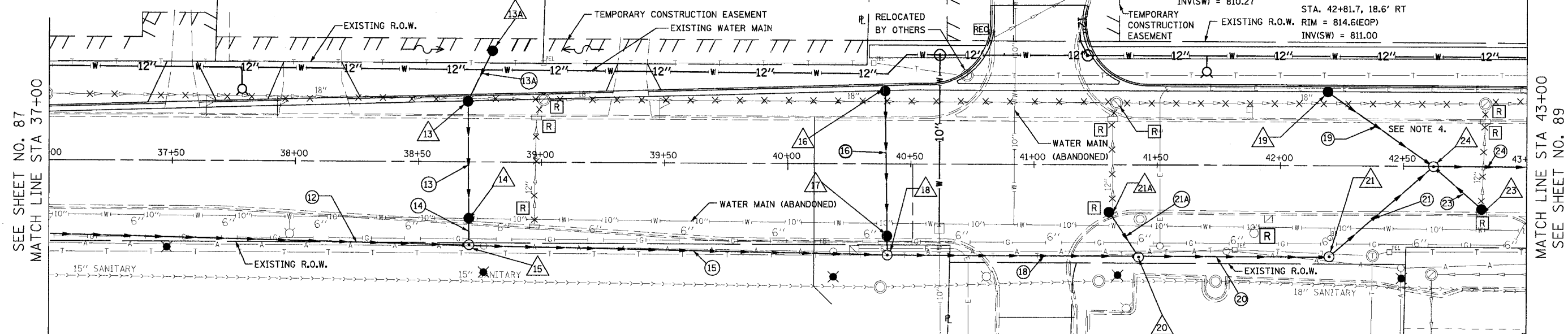


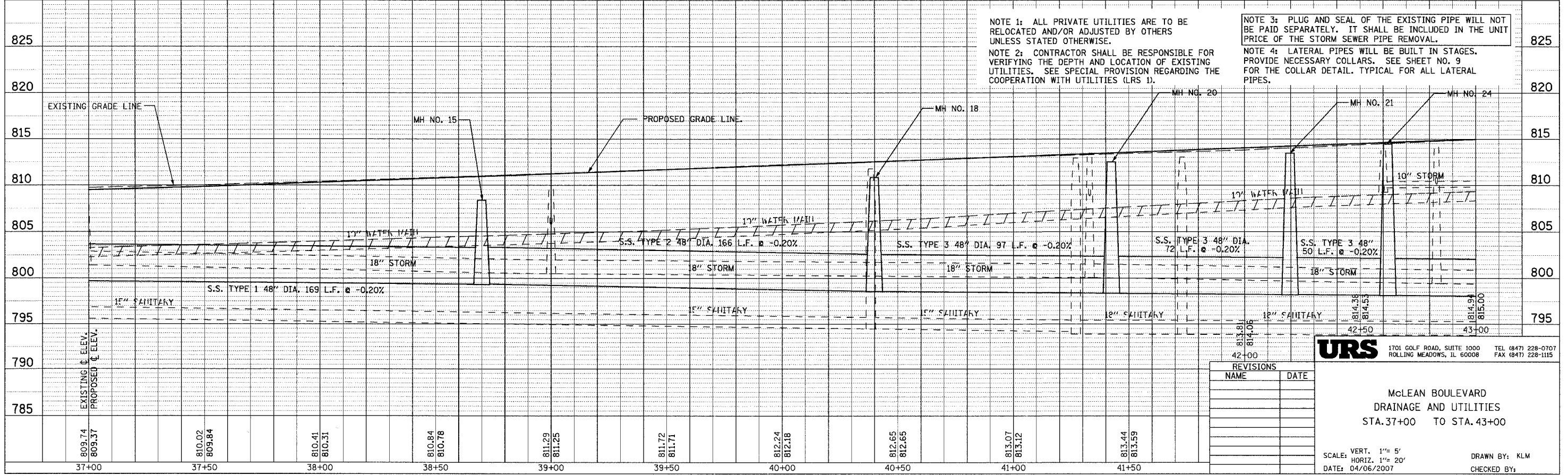
13. CB TY. A, 4' DIA. F&G TYPE 24 STA. 38+70, 24.52' LT RIM = 810.57 INV(W) = 806.02	13A. CB TY. C, 2' DIA. F&G TYPE 8 STA. 38+80, 45' LT RIM = 808.20 INV(E) = 806.10	14. CB TY. A, 4' DIA. F&G TYPE 24 STA. 38+70, 24.2' RT RIM = 810.4 (EOP) INV(W) = 805.5 INV(E) = 804.5	15. MH TY. A, 6' DIA. TYPE 1 FRAME, CL. LID STA. 38+70, 33.8' RT RIM = 808.3(EX. GROUND) INV(S) = 798.91 INV(N) = 798.91 INV(W) = 804.3	16. CB TY. A, 4' DIA. F&G TYPE 24 STA. 40+40, 30.0' LT RIM = 812.05 INV(E) = 809.05	17. CB TY. A, 4' DIA. F&G TYPE 24 STA. 40+40, 30.4' RT RIM = 811.6(EOP) INV(W) = 808.45 INV(E) = 806.92	18. MH TY. A, 6' DIA. TYPE 1 FRAME, CL. LID STA. 40+40, 37.10' RT RIM = 810.8(EX. GROUND) INV(S) = 798.57 INV(N) = 798.57 INV(W) = 806.80	20. MH TY. A, 6' DIA. TYPE 1 FRAME, CL. LID STA. 41+42.6, 37.5' RT RIM = 812.6(EX. GROUND) INV(S) = 798.38 INV(N) = 798.38 INV(SW) = 808.60	19. CB TY. A, 4' DIA. F&G TYPE 24 STA. 42+20, 30.00' LT RIM = 813.74 INV(E) = 810.75	21. MH TY. A, 7' DIA. TYPE 1 FRAME, CL. LID STA. 42+20.00, 37.1' RT RIM = 813.5(EX. GROUND) INV(S) = 798.24 INV(NW) = 798.24	24. MH TY. A, 7' DIA. TYPE 1 FRAME, CL. LID STA. 42+62.2', C/L RIM = 814.64 INV(SE) = 798.11 INV(N) = 798.11 INV(E) = 810.79 INV(SW) = 810.27	21A. CB TY. A, 4' DIA. F&G TYPE 24 STA. 41+30.5, 20.48' RT RIM = 813.00(EOP) INV(E) = 809.11 23. CB TY. A, 4' DIA. F&G TYPE 24 STA. 42+81.7, 18.6' RT RIM = 814.6(EOP) INV(SW) = 811.00
--	---	---	---	---	--	---	---	--	---	--	--



12. STORM SEWER CL. A 2, 48" 169 FT @ 0.20% TBF = 358.3 C.Y.	13A. STORM SEWER CL. A 1, 12" RG 14 FT @ 0.50% TBF = 4.3 C.Y.	15. STORM SEWER CL. A 2, 48" 164 FT @ 0.20% TBF = 424.1 C.Y.	17. STORM SEWER CL. A 1, 12" 4 FT @ 3.00% TBF = 0.8 C.Y.	19. STORM SEWER CL. A 1, 12" 47 FT @ 1.00% TBF = 7.3 C.Y.	21. STORM SEWER CL. A 3, 48" 50 FT @ 0.20% TBF = 161.6 C.Y.	23. STORM SEWER CL. A 1, 12" 21 FT @ 1.00% TBF = 3.7 C.Y.
13. STORM SEWER CL. A 1, 12" 44 FT @ 1.00% TBF = 1.7 C.Y.	14. STORM SEWER CL. A 1, 12" 6 FT @ 3.00% TBF = 0.8 C.Y.	16. STORM SEWER CL. A 1, 12" 61 FT @ 1.00% TBF = 7.9 C.Y.	18. STORM SEWER CL. A 3, 48" 97 FT @ 0.20% TBF = 316.1 C.Y.	20. STORM SEWER CL. A 2, 48" 72 FT @ 0.02% TBF = 234.6 C.Y.	21A. STORM SEWER CL. A 1, 12" 17 FT @ 3.00% TBF = 2.1 C.Y.	24. STORM SEWER CL. A 3, 48" 158 FT @ 0.20% TBF = 556.0 C.Y.

FOR DRAINAGE AND UTILITY LEGEND SEE SHEET NO. 87.

NOTE 1: ALL PRIVATE UTILITIES ARE TO BE RELOCATED AND/OR ADJUSTED BY OTHERS UNLESS STATED OTHERWISE.
 NOTE 2: CONTRACTOR SHALL BE RESPONSIBLE FOR VERIFYING THE DEPTH AND LOCATION OF EXISTING UTILITIES. SEE SPECIAL PROVISION REGARDING THE COOPERATION WITH UTILITIES (LRS 1).
 NOTE 3: PLUG AND SEAL OF THE EXISTING PIPE WILL NOT BE PAID SEPARATELY. IT SHALL BE INCLUDED IN THE UNIT PRICE OF THE STORM SEWER PIPE REMOVAL.
 NOTE 4: LATERAL PIPES WILL BE BUILT IN STAGES. PROVIDE NECESSARY COLLARS. SEE SHEET NO. 9 FOR THE COLLAR DETAIL. TYPICAL FOR ALL LATERAL PIPES.



REVISIONS	
NAME	DATE

URS 1701 GOLF ROAD, SUITE 1000 TEL (847) 228-0707
 ROLLING MEADOWS, IL 60008 FAX (847) 228-1115

MCLEAN BOULEVARD
 DRAINAGE AND UTILITIES
 STA. 37+00 TO STA. 43+00

SCALE: VERT. 1" = 5'
 HORIZ. 1" = 20'
 DATE: 04/06/2007
 DRAWN BY: KLM
 CHECKED BY:

PLAN SURVEYED PLOTTED CHECKED
 NOTE BOOK NO. DATE BY
 STRUCTURE NOTATIONS CIP/D

PROFILE SURVEYED PLOTTED CHECKED
 NOTE BOOK NO. DATE BY
 STRUCTURE NOTATIONS CIP/D