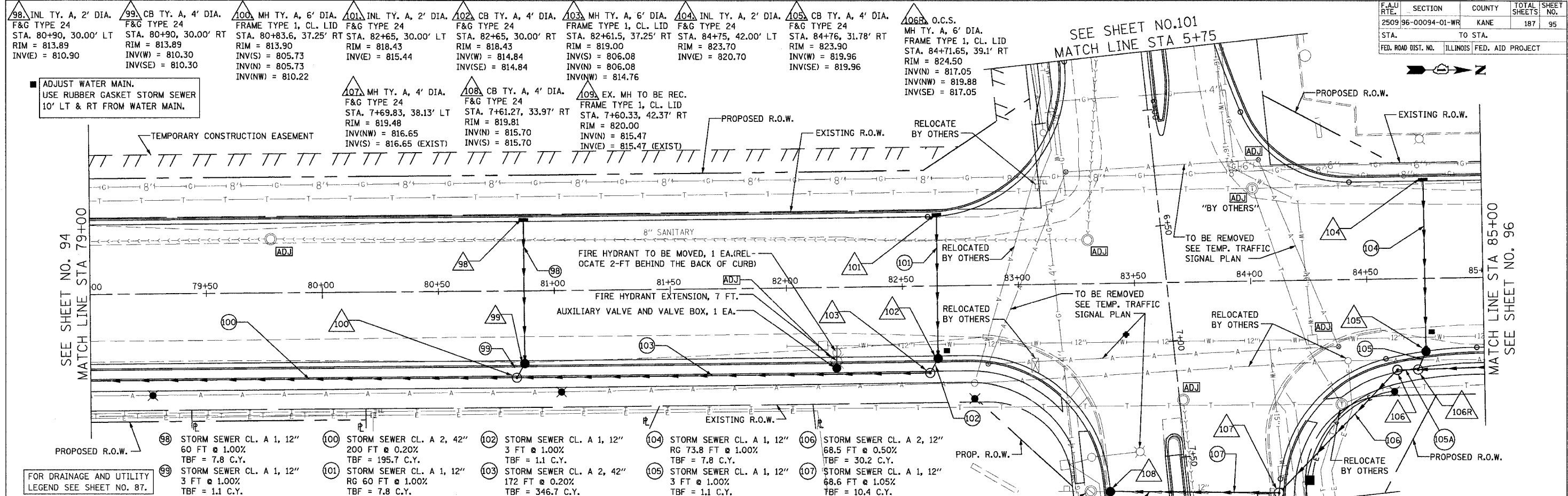


CONTRACT NO. 83737			
F.A.U. RTE.	SECTION	COUNTY	TOTAL SHEET NO.
2509.96-00094-01-WR		KANE	187 95
STA.	TO STA.		
FED. ROAD DIST. NO.	ILLINOIS FED. AID PROJECT		



ADJUST WATER MAIN.  
USE RUBBER GASKET STORM SEWER  
10' LT & RT FROM WATER MAIN.

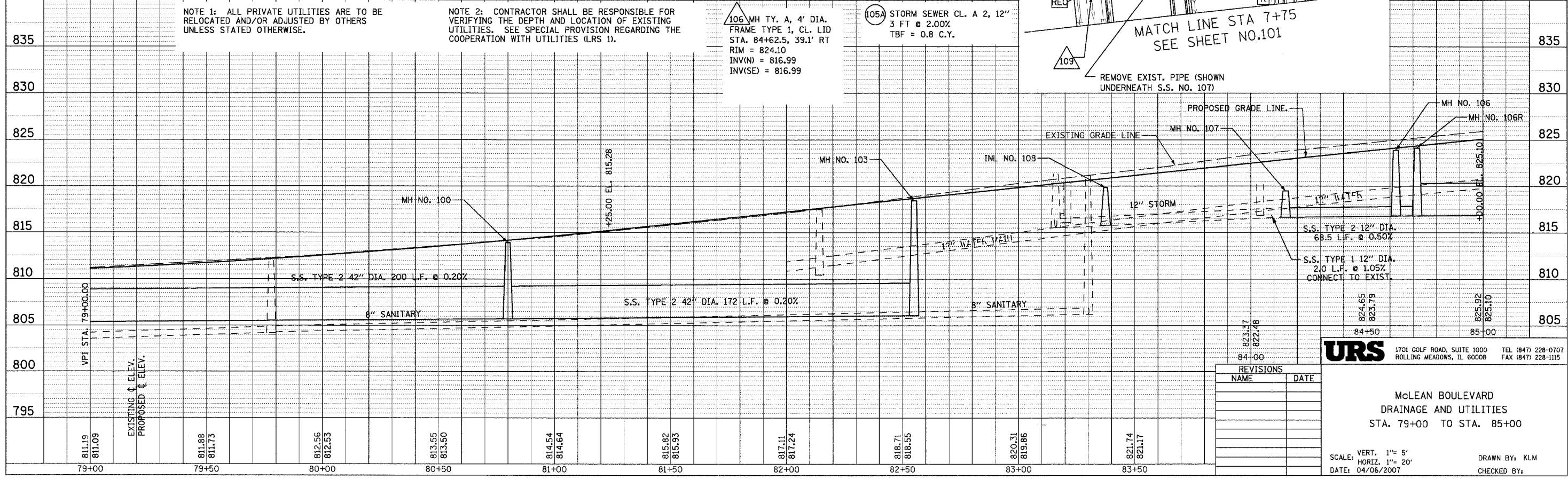
FOR DRAINAGE AND UTILITY  
LEGEND SEE SHEET NO. 87.

NOTE 1: ALL PRIVATE UTILITIES ARE TO BE  
RELOCATED AND/OR ADJUSTED BY OTHERS  
UNLESS STATED OTHERWISE.

NOTE 2: CONTRACTOR SHALL BE RESPONSIBLE FOR  
VERIFYING THE DEPTH AND LOCATION OF EXISTING  
UTILITIES. SEE SPECIAL PROVISION REGARDING THE  
COOPERATION WITH UTILITIES (LRS 1).

106 MH TY. A, 4' DIA.  
FRAME TYPE 1, CL. LID  
STA. 84+62.5, 39.1' RT  
RIM = 824.10  
INV(N) = 816.99  
INV(SE) = 816.99

105A STORM SEWER CL. A 2, 12"  
3 FT @ 2.00%  
TBF = 0.8 C.Y.



REVISIONS	
NAME	DATE

**URS** 1701 GOLF ROAD, SUITE 1000 TEL (847) 228-0707  
ROLLING MEADOWS, IL 60008 FAX (847) 228-1115

MCLEAN BOULEVARD  
DRAINAGE AND UTILITIES  
STA. 79+00 TO STA. 85+00

SCALE: VERT. 1" = 5'  
HORIZ. 1" = 20'  
DATE: 04/06/2007  
DRAWN BY: KLM  
CHECKED BY:

DATE: \_\_\_\_\_ BY: \_\_\_\_\_  
PLAN: \_\_\_\_\_  
NOTE BOOK: \_\_\_\_\_  
NO.:

DATE: \_\_\_\_\_ BY: \_\_\_\_\_  
PROFILE: \_\_\_\_\_  
NOTE BOOK: \_\_\_\_\_  
NO.: