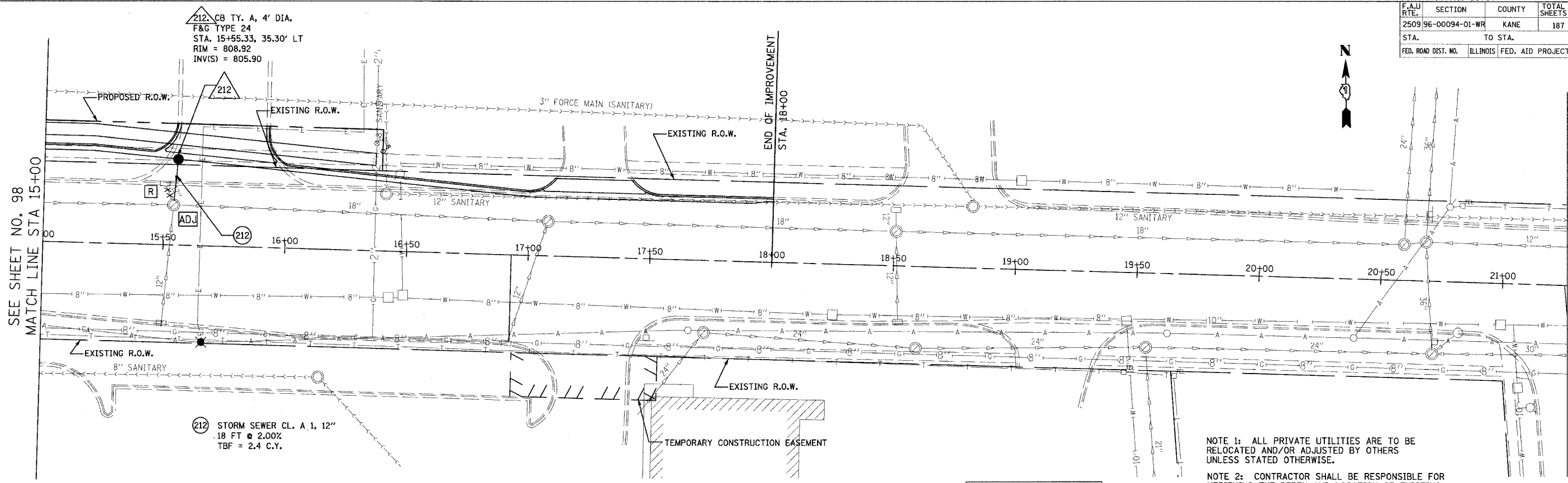
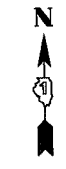


CONTRACT NO. 83737				
F.A.U. RTE.	SECTION	COUNTY	TOTAL SHEETS	SHEET NO.
2509 96-00094-01-WR		KANE	187	99
STA.		TO STA.		
FED. ROAD DIST. NO.		ILLINOIS FED. AID PROJECT		



212 CB TY. A, 4' DIA.
 F&G TYPE 24
 STA. 15+55.33, 35.30' LT
 RIM = 808.92
 INV(S) = 805.90

212 STORM SEWER CL. A, 1, 12"
 18 FT @ 2.00%
 TBF = 2.4 C.Y.

NOTE 1: ALL PRIVATE UTILITIES ARE TO BE RELOCATED AND/OR ADJUSTED BY OTHERS UNLESS STATED OTHERWISE.

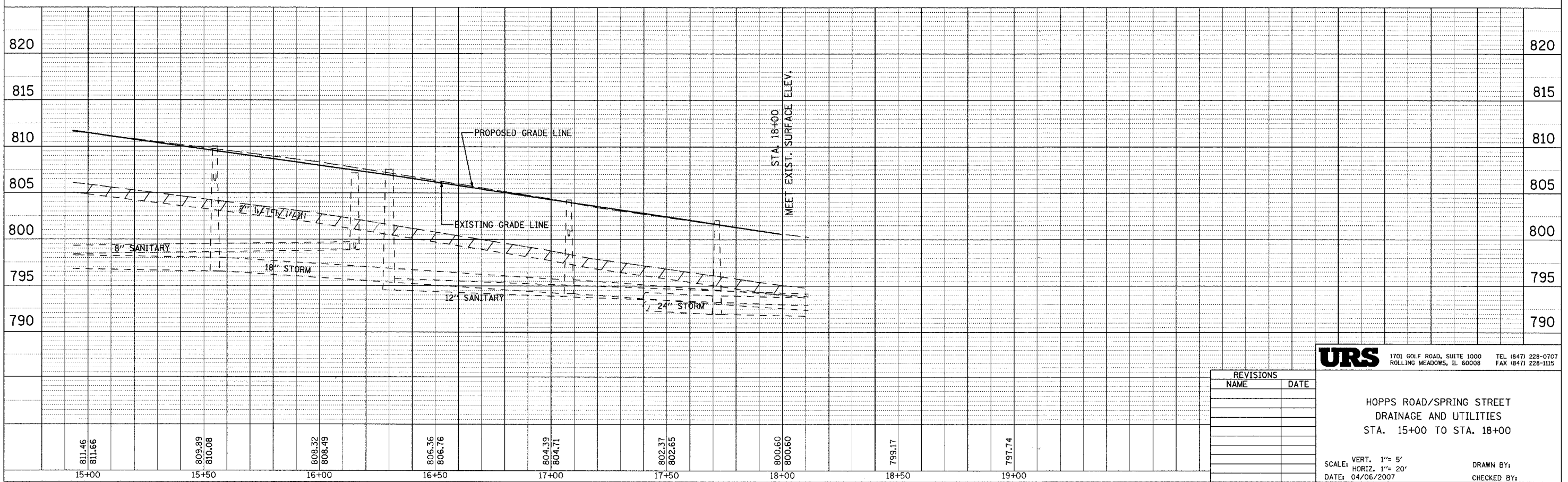
NOTE 2: CONTRACTOR SHALL BE RESPONSIBLE FOR VERIFYING THE DEPTH AND LOCATION OF EXISTING UTILITIES. SEE SPECIAL PROVISION REGARDING THE COOPERATION WITH UTILITIES (LRS 1).

FOR DRAINAGE AND UTILITY LEGEND SEE SHEET NO. 87.

SPRING STREET

PLAN	DATE
BY	
REVISIONS	
NO.	

PROFILE	DATE
BY	
REVISIONS	
NO.	



REVISIONS	
NAME	DATE

URS 1701 GOLF ROAD, SUITE 1000 TEL (847) 228-0707
 ROLLING MEADOWS, IL 60008 FAX (847) 228-1115

HOPPS ROAD/SPRING STREET
 DRAINAGE AND UTILITIES
 STA. 15+00 TO STA. 18+00

SCALE: VERT. 1" = 5'
 HORIZ. 1" = 20'
 DATE: 04/06/2007
 DRAWN BY:
 CHECKED BY: