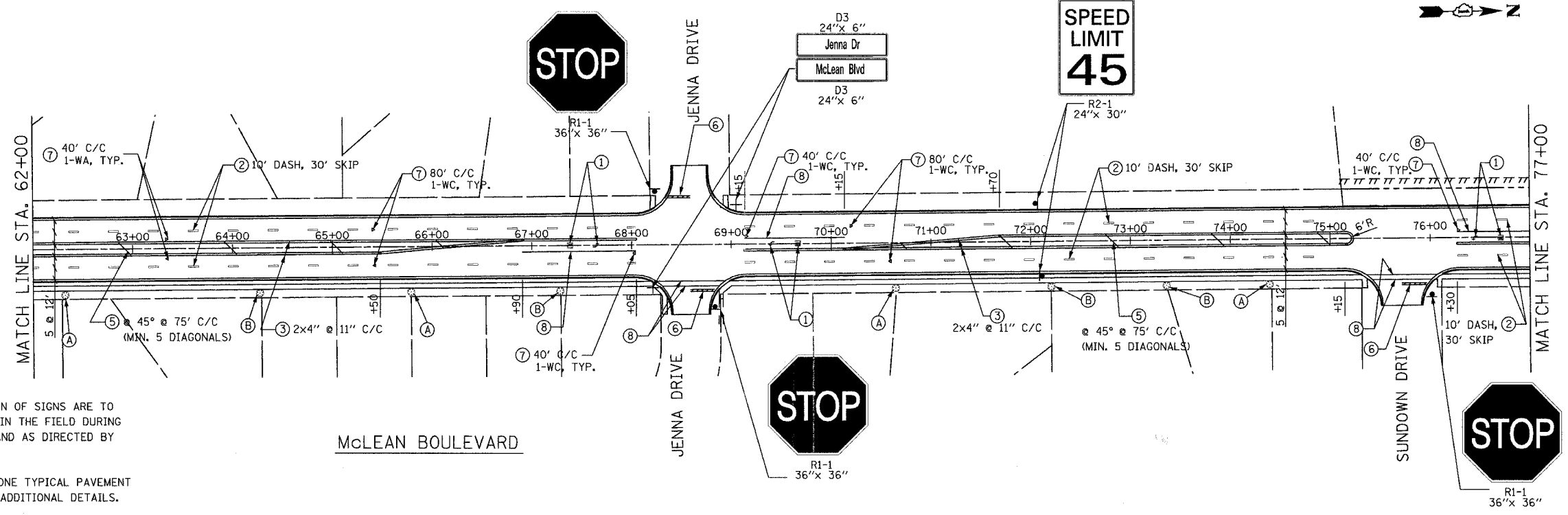
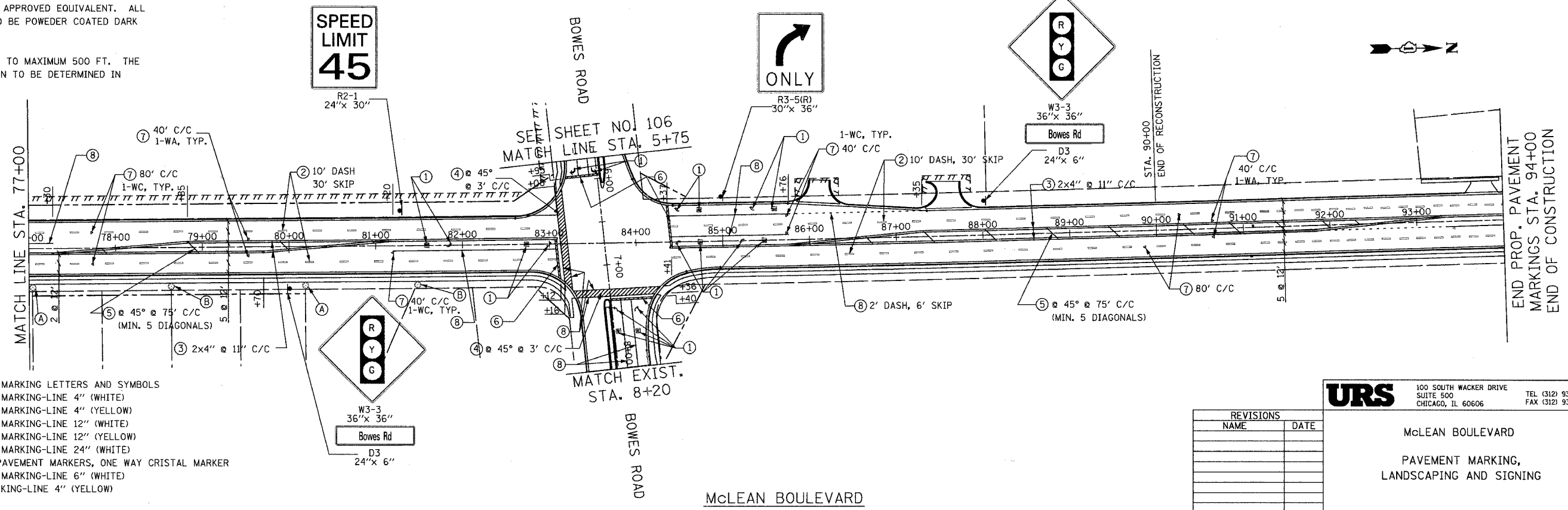


CONTRACT NO. 83737				
F.A.U. RTE.	SECTION	COUNTY	TOTAL SHEETS	SHEET NO.
2509	96-00094-01-WR	KANE	187	105
STA.		TO STA.		
FED. ROAD DIST. NO.		ILLINOIS FED. AID PROJECT		



- NOTES:
1. ACTUAL LOCATION OF SIGNS ARE TO BE DETERMINED IN THE FIELD DURING CONSTRUCTION AND AS DIRECTED BY THE ENGINEER.
 2. SEE "DISTRICT ONE TYPICAL PAVEMENT MARKINGS" FOR ADDITIONAL DETAILS.
 3. ALL SIGNS TO BE DIAMOND GRADE VIP TYPE.
 4. SIGN POSTS SHALL BE TELSPAR STEEL POSTS (2"x2"x10') USING THE V-LOC SOCKET SYSTEM FROM TAPCO OR APPROVED EQUIVALENT. ALL STEEL POSTS TO BE POWDER COATED DARK BRONZE.
 5. MINIMUM 250 FT TO MAXIMUM 500 FT. THE ACTUAL LOCATION TO BE DETERMINED IN THE FIELD.



- LEGEND
- ① POLYUREA PAVEMENT MARKING LETTERS AND SYMBOLS
 - ② POLYUREA PAVEMENT MARKING-LINE 4" (WHITE)
 - ③ POLYUREA PAVEMENT MARKING-LINE 4" (YELLOW)
 - ④ POLYUREA PAVEMENT MARKING-LINE 12" (WHITE)
 - ⑤ POLYUREA PAVEMENT MARKING-LINE 12" (YELLOW)
 - ⑥ POLYUREA PAVEMENT MARKING-LINE 24" (WHITE)
 - ⑦ RAISED REFLECTIVE PAVEMENT MARKERS, ONE WAY CRISTAL MARKER
 - ⑧ POLYUREA PAVEMENT MARKING-LINE 6" (WHITE)
 - ⑨ PAINT PAVEMENT MARKING-LINE 4" (YELLOW)
 - Ⓐ AUTUMN BLAZE MAPLE
 - Ⓑ KENTUCKY COFFEE TREE

REVISIONS	
NAME	DATE

URS 100 SOUTH WACKER DRIVE
SUITE 500
CHICAGO, IL 60606 TEL (312) 939-1000
FAX (312) 939-4198

McLEAN BOULEVARD
PAVEMENT MARKING,
LANDSCAPING AND SIGNING

SCALE: DATE 04/06/2007 DRAWN BY CHECKED BY