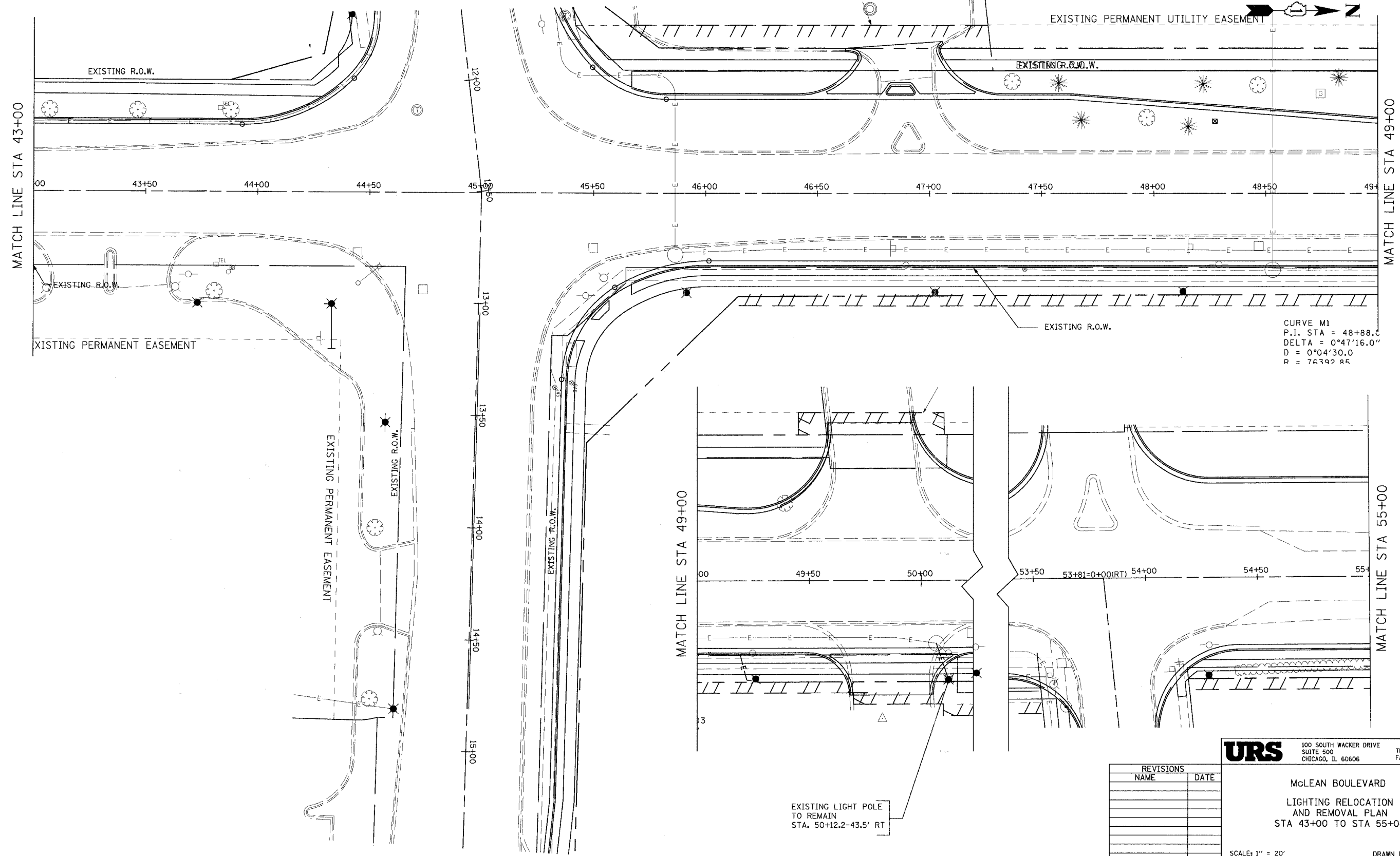


CONTRACT NO. 83737				
F.A.J. RTE.	SECTION	COUNTY	TOTAL SHEETS	SHEET NO.
2509	96-00094-01-WR	KANE	187	122
STA.		TO STA.		
FED. ROAD DIST. NO.		ILLINOIS FED. AID PROJECT		



CURVE M1  
P.I. STA = 48+88.0  
DELTA = 0°47'16.0"  
D = 0°04'30.0"  
R = 76392.85

EXISTING LIGHT POLE  
TO REMAIN  
STA. 50+12.2-43.5' RT

REVISIONS	
NAME	DATE

**URS** 100 SOUTH WACKER DRIVE  
SUITE 500 TEL (312) 939-1000  
CHICAGO, IL 60606 FAX (312) 939-4198

**McLEAN BOULEVARD**  
**LIGHTING RELOCATION**  
**AND REMOVAL PLAN**  
**STA 43+00 TO STA 55+00**

SCALE: 1" = 20'  
DATE 04/06/2007  
DRAWN BY KLM  
CHECKED BY