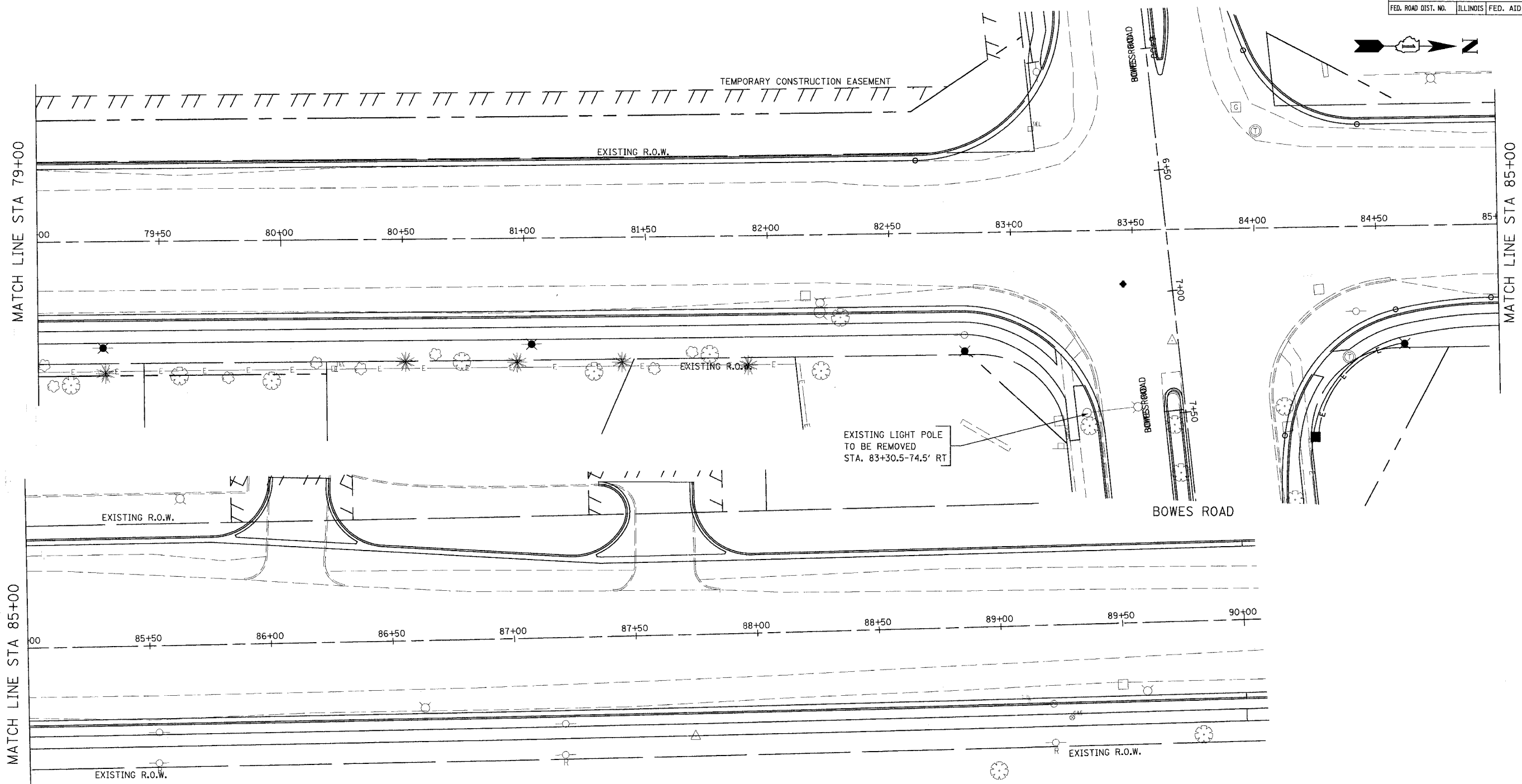


CONTRACT NO. 83737				
F.A.U. RTE.	SECTION	COUNTY	TOTAL SHEETS	SHEET NO.
2509	96-00094-01-WR	KANE	187	125
STA.		TO STA.		
FED. ROAD DIST. NO.		ILLINOIS	FED. AID PROJECT	



MATCH LINE STA 79+00

MATCH LINE STA 85+00

MATCH LINE STA 85+00

SCHEDULE OF QUANTITIES

ITEM NO.	DESCRIPTION	UNIT	QUANTITY
84200500	REMOVAL OF EXISTING LIGHTING UNIT, SALVAGE	EACH	2
84200700	LIGHTING FOUNDATION REMOVAL	EACH	4
84400105	RELOCATE EXISTING LIGHTING UNIT	EACH	2
83600200	LIGHT POLE FOUNDATION, 24" DIAMETER	FOOT	20

NOTES:
 THE CONTRACTOR SHALL DISCONNECT THE EXISTING WIRE IN UNIT DUCT AND RECONNECT TO RELOCATED LIGHT POLE. THE COST FOR DISCONNECTING AND RECONNECTING THE WIRES SHALL BE INCIDENTAL TO THE RELOCATION OF LIGHT POLE.

DIRECT BURIED SPLICES WILL NOT BE ALLOWED.

THE CONTRACTOR SHALL VERIFY THE EXISTING AMOUNT OF SLACK TO RECONNECT THE RELOCATED LIGHT POLES. IN THE EVENT THAT THE EXISTING SLACK IS NOT ENOUGH TO PROVIDE RECONNECTION, THEN THE CONTRACTOR SHALL REWIRE FROM THE SAME CIRCUIT TO THE NEAREST LIGHT POLE ON THE CIRCUIT.

REVISIONS	
NAME	DATE

URS 100 SOUTH WACKER DRIVE
 SUITE 500 TEL (312) 939-1000
 CHICAGO, IL 60606 FAX (312) 939-4198

**McLEAN BOULEVARD
 LIGHTING RELOCATION
 AND REMOVAL PLAN
 STA 79+00 TO STA 90+00**

SCALE: 1" = 20'
 DATE 04/06/2007
 DRAWN BY KLM
 CHECKED BY