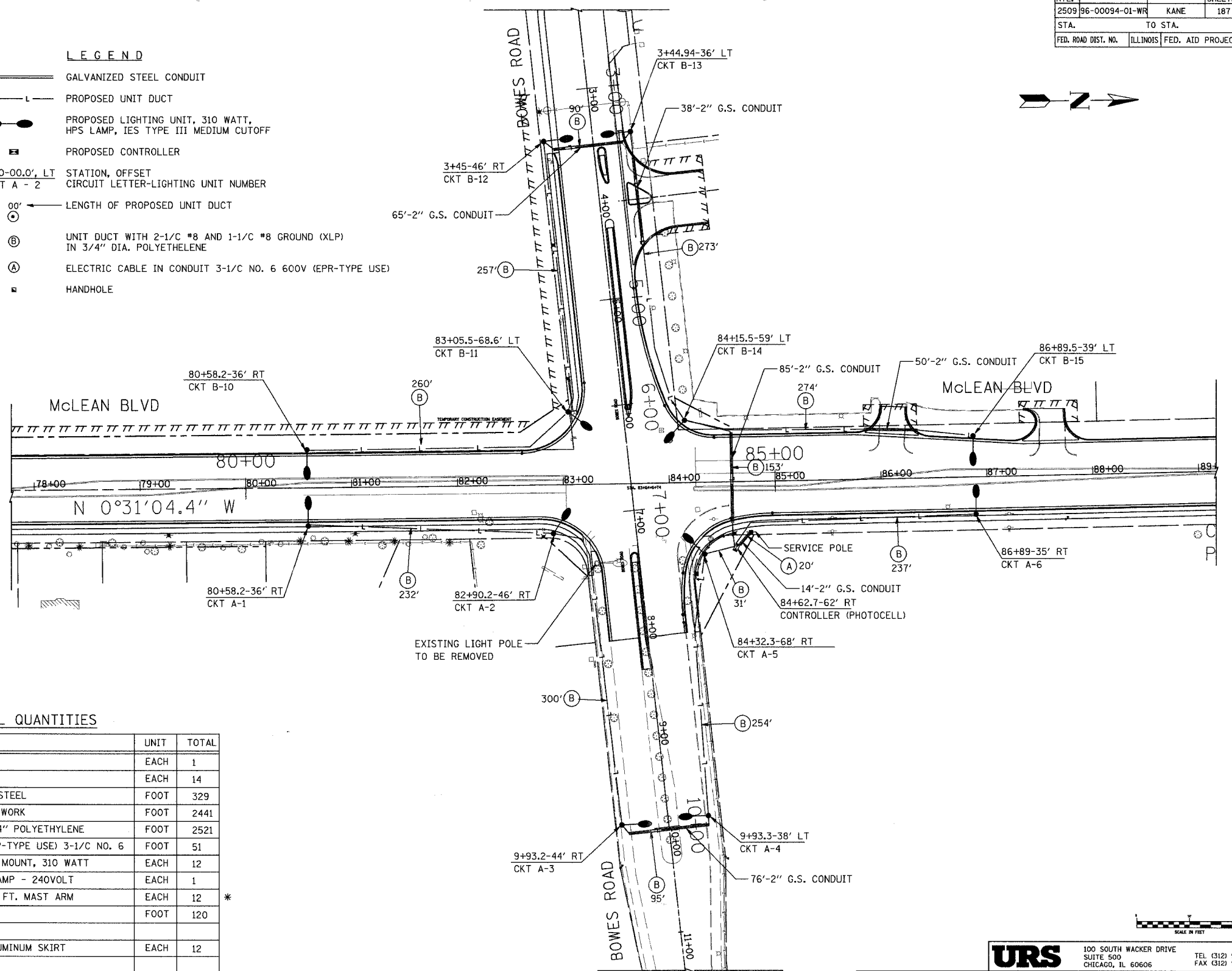


CONTRACT NO. 83737				
F.A.U. RTE.	SECTION	COUNTY	TOTAL SHEETS	SHEET NO.
2509	96-00094-01-WR	KANE	187	127
STA.		TO STA.		
FED. ROAD DIST. NO.		ILLINOIS FED. AID PROJECT		

NOTES:

- THE SERVICE INSTALLATIONS WILL BE MADE ON ComEd POLE AND SHALL BE 240 VOLT SERVICE AND SHALL HAVE A MINIMUM K.V.A. RATING AS SHOWN IN THE PLANS.
- NO UNDERGROUND SPLICES WILL BE ALLOWED.
- ALL SPLICES ARE TO BE MADE IN THE BASE OF THE LIGHT POLE.
- CABLE SHALL BE BURIED AT A MINIMUM DEPTH OF 2.5' BELOW THE SURFACE GRADE.
- LIGHTING STANDARDS ARE TO BE LOCATED A MINIMUM DISTANCE OF 2' FROM THE BACK OF CURB TO THE FACE OF POLE, EXCEPT WHERE OTHERWISE INDICATED, OR ANY CONFLICTS WITH UTILITIES.
- ALL LIGHT POLES SHALL HAVE BREAKAWAY COUPLINGS.
- THE RIGID STEEL CONDUIT FOR SERVICE POLE RISER SHALL BE INCLUDED IN THE ITEM FOR SERVICE INSTALLATION.
- ALL GALVANIZED STEEL CONDUITS ARE TRENCHED UNLESS OTHERWISE INDICATED.
- APPROXIMATELY 20' OF CABLE SHALL BE COILED AT THE TOP OF RIGID STEEL CONDUIT RISER, OF THE SIZE INDICATED, INSTALLED ON THE SERVICE POLE, FOR CONNECTION TO ELECTRICAL SERVICE. CONNECTION TO ELECTRICAL SERVICE TO BE MADE BY ComEd COMPANY. THIS CABLE WILL BE MEASURED AND PAID FOR AS CABLE IN CONDUIT.
- LUMINARIES SHALL OPERATE AT A NOMINAL 240V PRIMARY VOLTAGE.
- STATIONS AND OFFSETS ARE GIVEN TO THE CENTERLINE OF POLES.
- GROUND RODS SHALL BE LOCATED APPROXIMATELY WHERE SHOWN AND AS DIRECTED BY THE ENGINEER.
- THE CENTERLINE OF THE CABLE TRENCHES SHALL BE COINCIDENT WITH THE CENTERLINE OF THE LIGHTING FOUNDATIONS.
- PROPOSED LUMINARIES SHALL BE HIGH PRESSURE SODIUM 310 WATTS MC-III.
- THE PHOTOCELL SHALL BE MOUNTED ON TOP OF THE CONTROLLER CABINET (FACING NORTH) PER THE MANUFACTURER'S RECOMMENDATIONS. PHOTOCELL CABLE AND CONNECTIONS SHALL BE INCIDENTAL TO THE CONTROLLER PAY ITEM

- LEGEND**
- ===== GALVANIZED STEEL CONDUIT
 - - - - - PROPOSED UNIT DUCT
 - PROPOSED LIGHTING UNIT, 310 WATT, HPS LAMP, IES TYPE III MEDIUM CUTOFF
 - PROPOSED CONTROLLER
 - ⊕ STATION, OFFSET CIRCUIT LETTER-LIGHTING UNIT NUMBER
 - 00' ← LENGTH OF PROPOSED UNIT DUCT
 - ⊙ UNIT DUCT WITH 2-1/2" #8 AND 1-1/2" #8 GROUND (XLP) IN 3/4" DIA. POLYETHYLENE
 - ⊙ ELECTRIC CABLE IN CONDUIT 3-1/2" NO. 6 600V (EPR-TYPE USE)
 - HANDHOLE



SCHEDULE OF ELECTRICAL QUANTITIES

ITEM NO.	DESCRIPTION	UNIT	TOTAL
80400100	ELECTRIC SERVICE INSTALLATION	EACH	1
81018500	GROUND ROD, 3/4" DIA. X 10 FT.	EACH	14
81400100	CONDUIT PUSHED, 2" DIA., GALVANIZED STEEL	FOOT	329
81500200	TRENCH AND BACKFILL FOR ELECTRICAL WORK	FOOT	2441
81600215	UNIT DUCT, 2"X1/2"X1/2" XLP GROUND 3/4" POLYETHYLENE	FOOT	2521
81702415	ELECTRIC CABLE IN CONDUIT, 600V (XLP-TYPE USE) 3-1/2" NO. 6	FOOT	51
82102310	LUMINAIRE, SODIUM VAPOR, HORIZONTAL MOUNT, 310 WATT	EACH	12
82500510	LIGHTING CONTROLLER TYPE CB-RCS 60AMP - 240VOLT	EACH	1
83008500	LIGHT POLE, ALUMINUM, 40 FT. M.H., 12 FT. MAST ARM	EACH	12
83600200	LIGHT POLE FOUNDATION, 24" DIAMETER	FOOT	120
83800505	BREAKAWAY DEVICE, COUPLING, WITH ALUMINUM SKIRT	EACH	12

* ALL LIGHT POLES ARE TO BE POWDER COATED BRONZE.

REVISIONS	
NAME	DATE

URS 100 SOUTH WACKER DRIVE
SUITE 500 CHICAGO, IL 60606
TEL (312) 939-1000 FAX (312) 939-4158

McLEAN BOULEVARD

LIGHTING PLAN
McLEAN BOULEVARD & BOWES ROAD

SCALE: 1" = 50'
DATE 04/06/2007
DRAWN BY VAP
CHECKED BY RAM