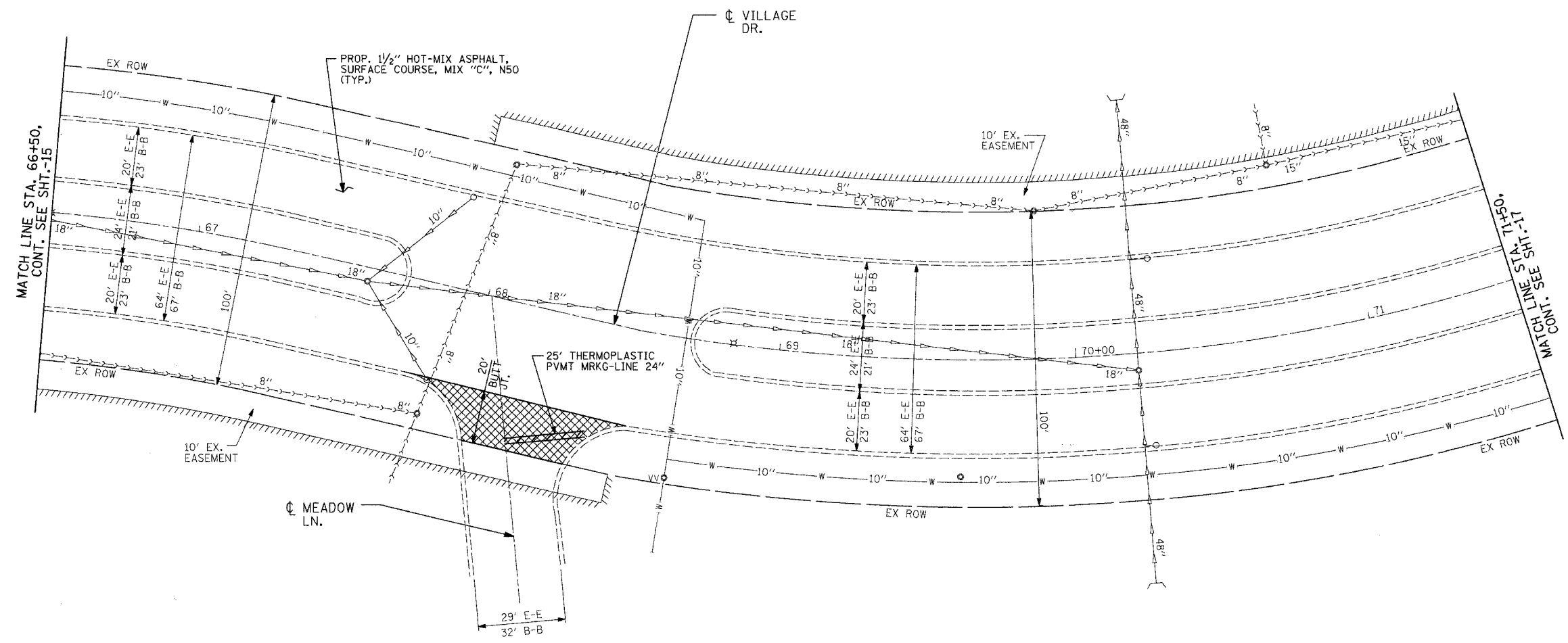
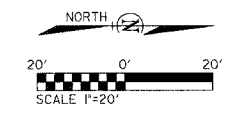


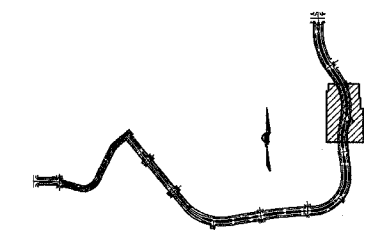
F.A. RTE.	SECTION	COUNTY	TOTAL SHEETS	SHEET NO.
1681	*	COOK	19	16
STA. 66+50.00		TO STA. 71+50.00		
FED. ROAD DIST. NO.		ILLINOIS		

• 06-00068-00-RS



EXISTING LEGEND:

- | | | | |
|---------|------------------|-----|----------------|
| —>—>—> | - STORM SEWER | WVO | - WATER VALVE |
| ->->-> | - SANITARY SEWER | VVO | - VALVE VAULT |
| — W — | - WATER LINE | ⊕ | - FIRE HYDRANT |
| — G — | - GAS LINE | GVO | - GAS VALVE |
| — T — | - TELEPHONE LINE | □ | - GAS VAULT |
| — E — | - COMED LINE | ⊗ | - LIGHT POLE |
| — CTV — | - CABLE LINE | ⊕ | - POWER POLE |
| ○ | - CATCH BASIN | ↑ | - GUY |
| ● | - MANHOLE | | |
| ⊖ | - INLET | | |



KEY PLAN

REVISIONS	
NAME	DATE
IDOT COMMENTS	02/14/07
IDOT COMMENTS	03/12/07

MFT 06-00068-00-RS
 VILLAGE DRIVE
 EDGEWATER DR. TO 183rd STR.
 HAZEL CREST, IL
 PROJECT NO. 05726

SCALE: VERT. NONE
 HORIZ. 1" = 20'
 DATE 03/09/2007

DRAWN BY LS
 CHECKED BY CT

CIVIL / STRUCTURAL ENGINEERS



GLOBETROTTERS INTERNATIONAL,
 300 SOUTH WACKER DRIVE, SUITE 200
 CHICAGO, IL. 60606

PLOT DATE = 03/09/2007
 PLOT SCALE = 24.00000 IN.
 SHEET SIZE = 36x24 (IN.)