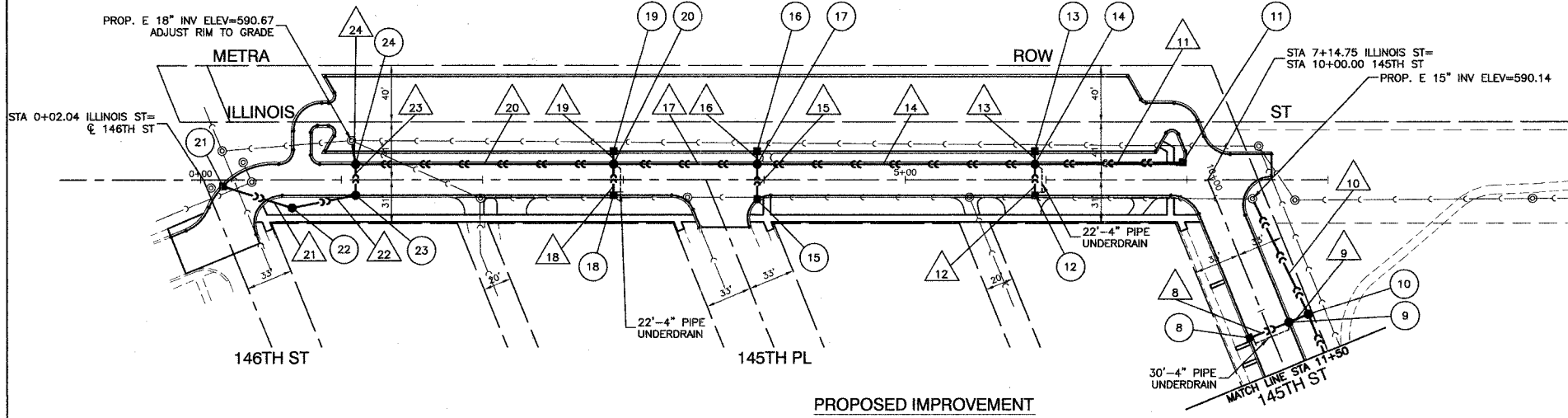
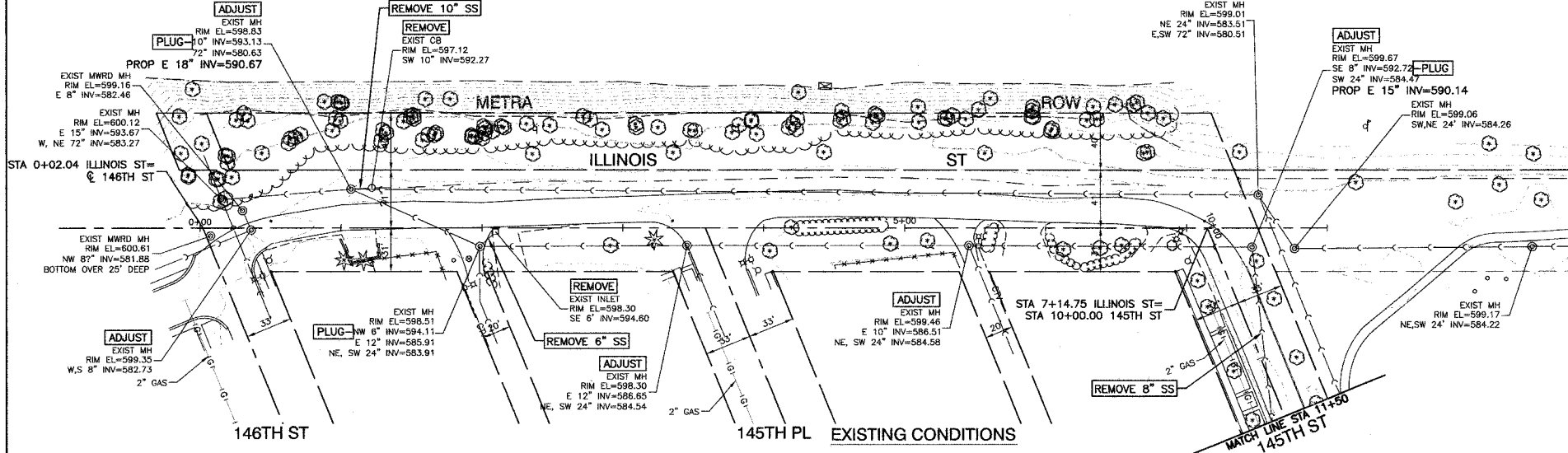
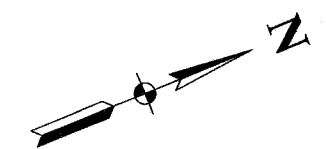


SECTION 4, TOWNSHIP 36, RANGE 14

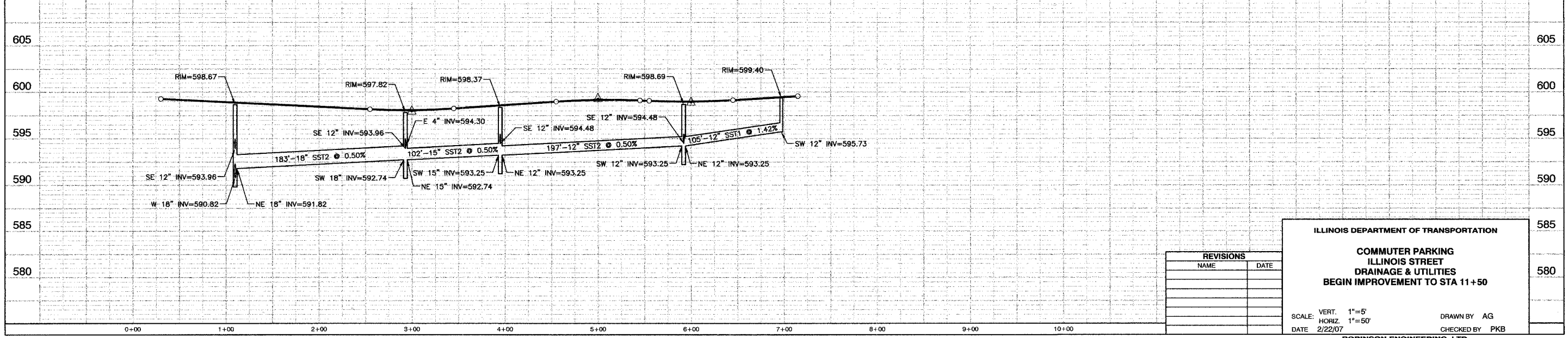
F.A.L. NO.	SECTION	COUNTY	TOTAL SHEETS	SHEET NO.
03-00108-00-PK	COOK	025	012	
STA. 0+00	TO STA. 11+50			
FED. ROAD DIST. NO.	ILLINOIS	FED. AID PROJECT		

CONTRACT NO. 83912



8	STA. 11+15, 15'RT INLET TA T11F&G RIM ELEV=598.38 N 12" INV=594.74	14	STA. 5+92, 11'LT CB TA 4'DIA. T11F&G RIM ELEV=598.69 E 4" INV = 595.19 NW 12" INV=595.00 SE 12" INV=594.49 NE-SW 12" INV=594.23	20	STA. 2+93, 11'LT CB TA 4'DIA. T11F&G RIM ELEV=597.82 E 4" INV = 594.30 NW 12" INV=594.50 SE 12" INV=593.96 NE 15" INV=592.74 SW 18" INV=592.74	8	30'-12" SST2 @ 1% (5.2)
9	STA. 11+15, 15'LT CB TA 4'DIA. T11F&G RIM ELEV=598.54 N-S 12" INV=594.34	15	STA. 3+95, 14.04'RT INLET TA T11F&G RIM ELEV=598.37 NW 12" INV=594.70	21	STA. 0+23, 5'RT INLET TA T11F&G RIM ELEV=598.75 NE 12" INV=595.08	9	15'-12" SST2 @ 4.8% (0.9)
10	STA. 11+15, 30'LT CB TA 4'DIA. T1F CL WITH HALF TRAP RIM ELEV=598.95 S 12" INV=594.19 E 15" INV=591.03 W 15" INV=590.50	16	STA. 3+95, 20'LT INLET TA T11F&G RIM ELEV=598.87 SE 12" INV=595.37	22	STA. 0+65, 20'RT CB TA T8C RIM ELEV=598.30 SW-N 12" INV=594.63	10	90'-15" SST2 @ 0.40% (0)
11	STA. 6+97, 12.36'LT INLET TA T11F&G RIM ELEV=599.40 SW 12" INV=595.73	17	STA. 3+95, 11'LT CB TA 4'DIA. T11F&G RIM ELEV=598.37 NW 12" INV=595.00 SE 12" INV=594.48 NE 12" INV=593.25 SW 15" INV=593.25	23	STA. 1+10, 11'RT CB TA 4'DIA. T11F&G RIM ELEV=598.67 S-NW 12" INV=594.18	11	105'-12" SST1 @ 1.42% (20.4)
12	STA. 5+92, 11'RT INLET TA T11F&G RIM ELEV=598.69 N 12" INV=595.19	18	STA. 2+93, 11'RT INLET TA T11F&G RIM ELEV=597.82 NW 12" INV=594.18	24	STA. 1+10, 11'LT CB TA 4'DIA. T11F&G RIM ELEV=598.67 SE 12" INV=593.96 NE 18" INV=591.82 W 18" INV=590.82	12	22'-12" SST1 @ 3.1% (3.1)
13	STA. 5+92, 20'LT INLET TA T11F&G RIM ELEV=599.15 SE 12" INV=595.65	19	STA. 2+93, 20'LT INLET TA T11F&G RIM ELEV=598.35 SE 12" INV=594.85			13	9'-12" SST1 @ 10% (0.8)
						14	197'-12" SST2 @ 0.50% (52.8)
						15	25'-12" SST1 @ 1% (3.6)
						16	9'-12" SST1 @ 6.1% (0.8)
						17	102'-15" SST2 @ 0.50% (31.1)
						18	22'-12" SST1 @ 1% (2.9)
						19	9'-12" SST1 @ 5.8% (0.8)
						20	183'-18" SST2 @ 0.50% (109.8)
						21	45'-12" SST1 @ 1% (6.8)
						22	22'-12" SST1 @ 1% (4.3)
						23	22'-12" SST2 @ 1% (3.5)
						24	18'-18" SST2 @ 0.80% (19.1)

**BENCH MARK**  
SQUARE CUT IN BACK OF WALK AT ALLEY RETURN  
AT THE NORTHEAST CORNER OF RESIDENCE #14501  
SCHOOL STREET.  
ELEVATION = 598.71 NGVD 29 (FEMA)



REVISIONS	
NAME	DATE

**ILLINOIS DEPARTMENT OF TRANSPORTATION**

**COMMUTER PARKING  
ILLINOIS STREET  
DRAINAGE & UTILITIES  
BEGIN IMPROVEMENT TO STA 11+50**

SCALE: VERT. 1"=5'  
HORIZ. 1"=50'

DATE 2/22/07

DRAWN BY AG  
CHECKED BY PKB

**ROBINSON ENGINEERING, LTD.**  
1700 SOUTH PARK AVENUE SOUTH HOLLAND, ILLINOIS 60473  
(708) 351-6700 FAX (708) 351-3800  
ILLINOIS DESIGN FIRM REGISTRATION NO. 184801-128