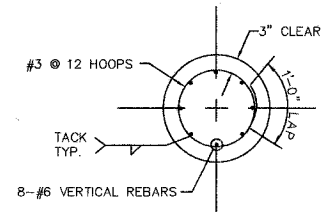
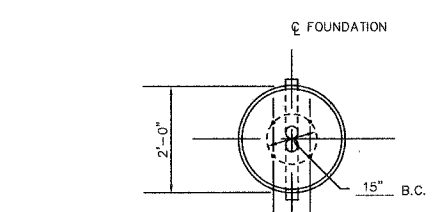


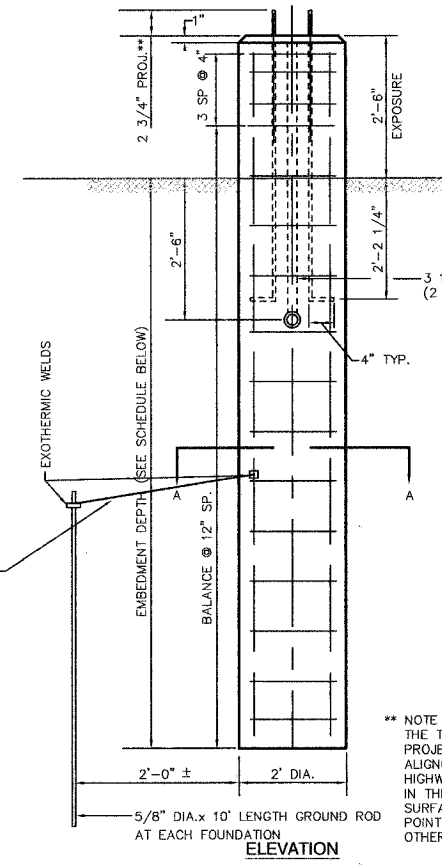
F. A. N. NO.	SECTION	COUNTY	TASK SHEETS	SHEET NO.
03-00108-00-PK	COOK	025	015	
STA.	TO STA.			
FED. ROAD DIST. NO.	ILLINOIS	FED. ROAD PROJECT		

CONTRACT NO. 83912



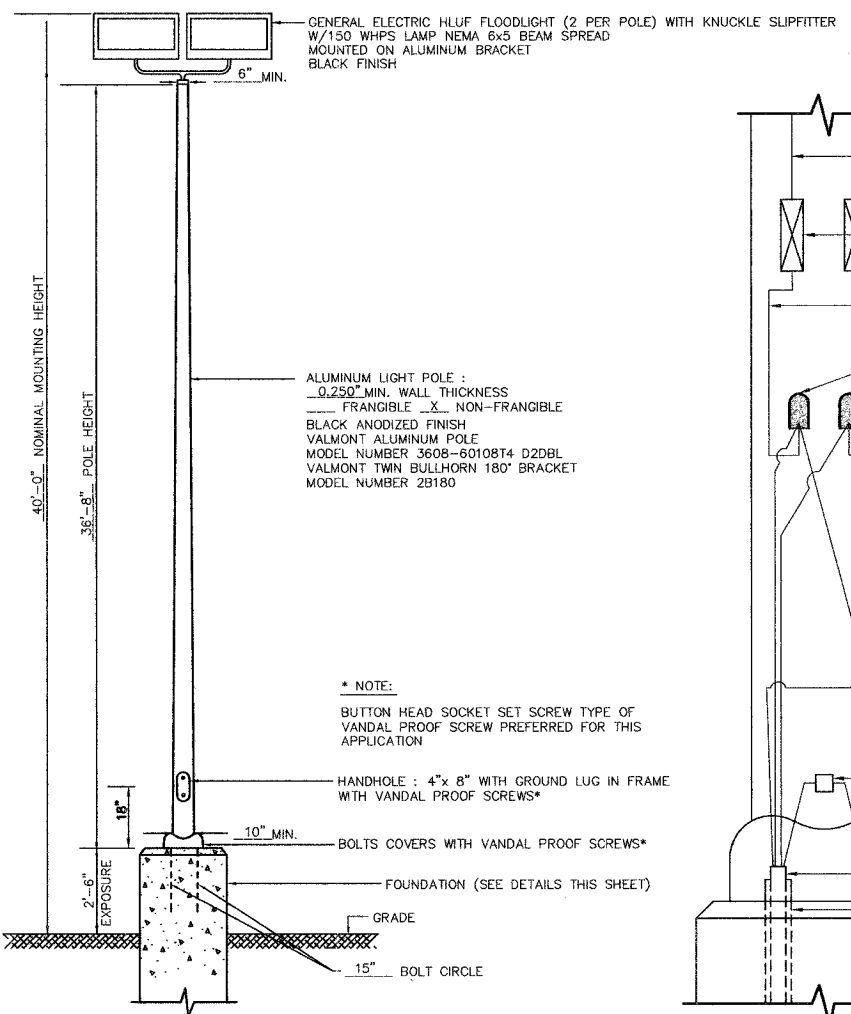
4-1/2" A.BOLTS (TOP 10" GALVANIZED)
8 N.C. FOR 6"
Fy = 50,000 PSI

- NOTE:
1. CONCRETE SHALL BE 3500 PSI AT 14 DAYS. (CLASS ST)
 2. REINFORCING BARS SHALL BE OF NEW BILLET STEEL (ASTM A615) HAVING Fy = 60,000 PSI AND DEFORMED (ASTM A307)
 3. HOLE FOR THE FOUNDATION SHALL BE AUGERED

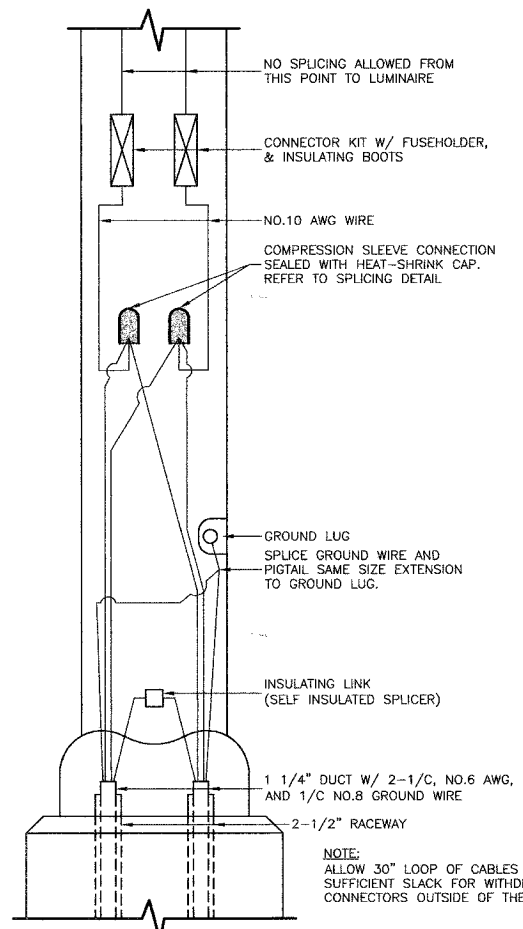


LIGHT POLE FOUNDATION (TYPICAL)

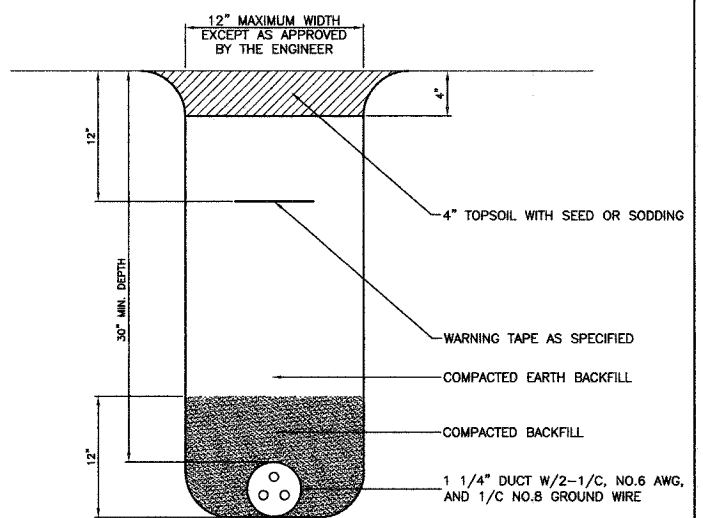
LUMINAIRE:
150 OR _____ WATT HIGH PRESSURE SODIUM LAMP
240 VOLT BALLAST
I.E.S. TYPE: _____ LIGHT DISTRIBUTION
LENS TYPE: _____ FLAT OR _____ BUBBLE
INITIAL LAMP LUMENS : 16,000
LAMP LIFE : 24,000 HOURS



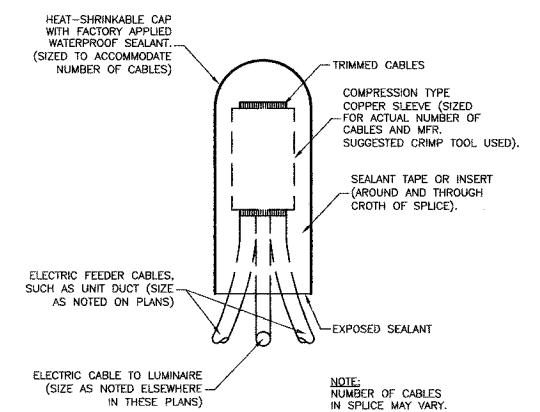
TYPICAL POLE INSTALLATION



POLE HANDHOLE WIRING DIAGRAM



TRENCH DETAIL FOR ELECTRIC CABLE



SPlicing ELECTRIC CABLES BASIC MATERIALS AND METHODS

FOUNDATION SCHEDULE						
DESCRIPTION	TYPE OF SOILS	STANDARDS	EMBEDMENT			
			MOUNTING HEIGHT			
			30 FT.	37.5 FT.	40 FT.	50 FT.
SOFT CLAY	Qu = .25-.50 T/FT. ²		9'-0"	9'-8"	10'-6"	14'-0"
MEDIUM CLAY	Qu = .50-1.0 T/FT. ²		6'-6"	7'-0"	7'-6" *	10'-0"
DENSE CLAY	Qu = 1.0-2.0 T/FT. ²		5'-6"	6'-0"	6'-6"	8'-6"
LOOSE SAND	N = 4-10		7'-0"	7'-8"	8'-4"	11'-0"
MEDIUM SAND	N = 10-30		6'-0"	6'-6"	7'-3"	9'-6"
DENSE SAND	N = 30-50		5'-6"	6'-0"	6'-6"	8'-6"

* TOTAL LENGTH OF FOUNDATION:
7'-6" + 2'-6" = 10'-0"

GENERAL NOTES:

1. ALL WORK TO CONFORM TO THE NATIONAL ELECTRICAL CODE AND ANY APPLICABLE LOCAL CODES.
2. CONTRACTOR TO VERIFY LOCATION OF ALL UNDERGROUND UTILITIES BEFORE TRENCHING OR AUGERING.
3. BEFORE INSTALLING STANDARDS NEAR OVERHEAD FACILITIES CALL C.E. Co. FOR APPROVAL OF LOCATION.
4. FOR LOCATION OF EXISTING UNDERGROUND ELECTRICAL CABLE CALL C.E. Co.
5. ALL CONDUIT TO BE 2 1/2" DIAMETER UNLESS OTHERWISE SPECIFIED.

REVISIONS	
NAME	DATE

ILLINOIS DEPARTMENT OF TRANSPORTATION

COMMUTER PARKING LIGHTING DETAILS

SCALE: VERT. _____
HORIZ. NONE

DATE: 2/22/07

DRAWN BY: FG
CHECKED BY: PKB

ROBINSON ENGINEERING, LTD.
17000 SOUTH PARK AVENUE SOUTH HOLLAND, ILLINOIS 60473
(708) 381-4100 FAX: (708) 381-0269
ILLINOIS DESIGN FIRM REGISTRATION NO. 154001128 04185-LIGHT-DTL-01