

F. A. U. REC.	SECTION	COUNTY	TOTAL SHEETS	SHEET NO.
1010	01-00050-00-RS	COOK	017	001
STA.	TO STA.			
FED. ROAD DIST. NO.	ILLINOIS	FED. AID PROJECT		

CONTRACT #83914

INDEX OF SHEETS

- 1 COVER SHEET, INDEX OF SHEETS, STATE STANDARDS
- 2 SUMMARY OF QUANTITIES AND GENERAL NOTES
- 3 TYPICAL CROSS SECTIONS
- 4-9 ROADWAY AND PAVEMENT MARKING PLANS
- 10 CONSTRUCTION DETAILS
- 11-17 DISTRICT ONE DETAILS

STATE STANDARDS

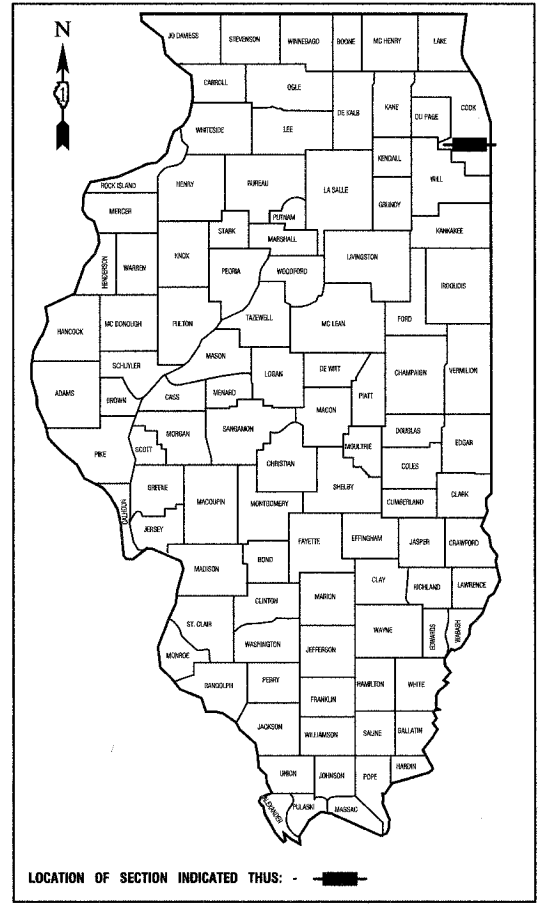
- 424001-04 Curb Ramps For Sidewalks
- 442201-02 Class C and D Patches
- 602301-01 Inlet-Type A
- 604001-02 Frame and Lids, Type 1
- 606001-03 Concrete Curb and Combination Concrete Curb & Gutter
- 701501-03 Urban Lane Closure, 2L 2W Undivided
- 701606-04 Urban Lane Closure Multilane 2W With Mountable Median
- 701701-04 Urban Lane Closure Multilane Intersection
- 701801-03 Lane Closure Multilane 1W or 2W Crosswalk or Sidewalk Closure
- 702001-06 Traffic Control Devices
- 780001-01 Typical Pavement Markings
- 781001-02 Typical Applications Raised Reflective Pavement Markers
- 886001 Detector Loop Installations
- 886006 Typical Layout for Detection Loops

STATE OF ILLINOIS
DEPARTMENT OF TRANSPORTATION
DIVISION OF HIGHWAYS

**PLANS FOR PROPOSED
FEDERAL AID HIGHWAY**

F.A.U. ROUTE 1010 (WESTVIEW AVE.) FROM 172ND ST. TO ARMORY DR.
F.A.U. ROUTE 1010 (ARMORY DR.) FROM WESTVIEW AVE. TO VINCENNES AVE.
F.A.U. ROUTE 1011 (173RD ST.) FROM INDIANA AVE. TO SOUTH PARK AVE.
LOCAL AGENCY PAVEMENT PRESERVATION

STREET RESURFACING
PROJECT: M-8003(573)
SECTION NO.: 01-00050-00-RS
VILLAGE OF SOUTH HOLLAND &
VILLAGE OF THORNTON
COOK COUNTY
C-91-149-06



STATE OF ILLINOIS
DEPARTMENT OF TRANSPORTATION
DIVISION OF HIGHWAYS

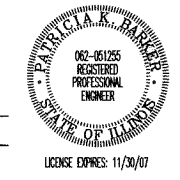
APPROVED: [Signature] 20 07
PRESIDENT, VILLAGE OF SOUTH HOLLAND

PASSED: [Signature] 20 07
DISTRICT ENGINEER OF LOCAL ROADS & STREETS

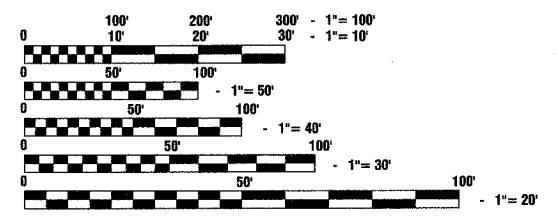
RELEASED FOR BID BASED ON LIMITED REVIEW: April 12 20 07
DEPUTY DIRECTOR OF HIGHWAYS, REGION ONE ENGINEER

PRINTED BY THE AUTHORITY OF
THE STATE OF ILLINOIS

PREPARED BY OR UNDER THE
DIRECT SUPERVISION OF:
[Signature]
2-22-07



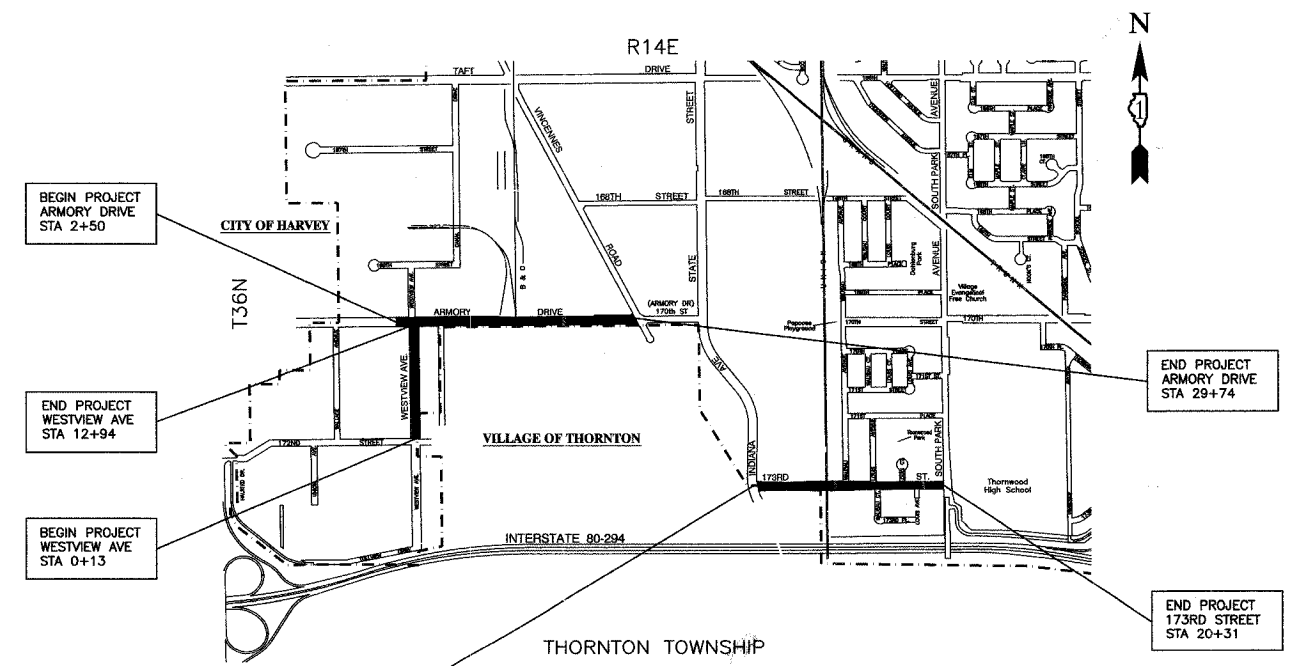
I.D.O.T. FEDERAL AID DESIGN ENGINEER: KEVIN STALLWORTH 847-705-4169
CONSULTANTS: ROBINSON ENGINEERING, LTD. 708-331-6700



FULL SIZE PLANS HAVE BEEN PREPARED USING STANDARD ENGINEERING SCALES, REDUCED SIZED PLANS WILL NOT CONFORM TO STANDARD SCALES, IN MAKING MEASUREMENTS ON REDUCED PLANS, THE ABOVE SCALES MAY BE USED.

J. U. L. I. E.
JOINT UTILITY LOCATION INFORMATION FOR EXCAVATION
1 - 800 - 892 - 0123

CONTRACT NO. 83914



LOCATION MAP

- INDICATES PROPOSED IMPROVEMENT
GROSS LENGTH= 5942 FEET = 1.12 MILES
NET LENGTH= 5902 FEET = 1.11 MILES

ADT = WESTVIEW	400 (2007)	400 (2030)
ARMORY	9,200 (2007)	9,500 (2030)
173RD ST	4,100 (2007)	4,300 (2030)