

SECTION	COUNTY	TOTAL SHEETS	SHEET NO.
06-00031-00-PV	COOK	14	2
GENERAL NOTES & TYPICAL SECTIONS			
FED. ROAD DIST. NO. 7	ILLINOIS	FED. AID PROJECT HPP-0224(004)	

GENERAL

ALL CONSTRUCTION SHALL BE DONE IN ACCORDANCE WITH THE "STANDARD SPECIFICATION FOR ROAD AND BRIDGE CONSTRUCTION", ADOPTED JANUARY 1, 2007; THE "SUPPLEMENTAL SPECIFICATIONS AND RECURRING SPECIAL PROVISION", ADOPTED JANUARY 1, 2007; THE LATEST EDITION OF THE "ILLINOIS MANUAL ON UNIFORM TRAFFIC CONTROL DEVICES FOR STREETS AND HIGHWAY", (IMUTCD); THE "DETAILS" IN THE PLANS AND THE "SPECIAL PROVISIONS" INCLUDED IN THE CONTRACT DOCUMENTS.

ANY REFERENCE TO "STANDARD" THROUGHOUT THE PLANS OR SPECIAL PROVISIONS SHALL BE INTERPRETED AS THE LATEST I.D.O.T. STANDARD.

THE CONTRACTOR SHALL ENSURE ALL PERMITS HAVE BEEN OBTAINED PRIOR TO COMMENCEMENT OF WORK.

THE CONTRACTOR SHALL NOTIFY THE VILLAGE OF BERKELEY, ROBERT LAREM, AT (708) 449-8840 72 HOURS PRIOR TO THE COMMENCEMENT OF WORK.

THE CONTRACTOR IS RESPONSIBLE FOR TRAFFIC CONTROL DURING CONSTRUCTION. THRU TRAFFIC IS TO BE PERMITTED DURING CONSTRUCTION EXCEPT FOR BRIEF PERIODS OF TIME, AS APPROVED BY THE ENGINEER. THE CONTRACTOR IS TO UTILIZE APPROPRIATE TRAFFIC CONTROL DEVICES AS SHOWN IN THE PLANS. THIS WORK SHALL BE PAID FOR AS "TRAFFIC CONTROL AND PROTECTION."

THE CONTRACTOR SHALL NOTIFY AS NECESSARY, ALL TESTING AGENCIES SUFFICIENTLY IN ADVANCE OF CONSTRUCTION. FAILURE OF CONTRACTOR TO ALLOW PROPER NOTIFICATION TIME WHICH RESULTS IN TESTING COMPANIES BEING UNABLE TO VISIT THE SITE AND PERFORM TESTING WILL CAUSE THE CONTRACTOR TO SUSPEND OPERATION TO BE TESTED UNTIL TESTING AGENCY CAN SCHEDULE TESTING OPERATIONS. NO COMPENSATION WILL BE PROVIDED FOR FAILURE TO HAVE PROPER TESTING AGENCIES ONSITE WHEN REQUIRED.

CONSTRUCTION ACTIVITIES MAY OCCUR BETWEEN 7:00 A.M. AND 7:00 P.M. MONDAY THROUGH FRIDAY AND 8:30 A.M. TO 5:00 P.M. ON SATURDAYS. CONSTRUCTION ACTIVITIES ON SUNDAY ARE PROHIBITED. NO WORK WILL BE PERFORMED ON HOLIDAYS OBSERVED IN ILLINOIS. CONSTRUCTION ACTIVITIES ARE IDENTIFIED AS THE OPERATION OF HEAVY EQUIPMENT, INCLUDING BUT NOT LIMITED TO THE WARMING UP OF ANY PIECE OF EQUIPMENT OR TURNING ON ENGINES. CONSTRUCTION ACTIVITIES SHALL NOT BEGIN BEFORE 7:00 A.M.

UTILITIES

THE LOCATION OF PUBLIC OR PRIVATE UTILITIES SHOWN ON THE PLANS ARE APPROXIMATE AND THEIR ACCURACY IS NOT GUARANTEED. THE CONTRACTOR WILL BE REQUIRED TO ASCERTAIN THE EXACT LOCATION OF SUCH UTILITIES SO AS NOT TO DAMAGE THEM IN ACCORDANCE WITH THE SPECIAL PROVISIONS AND ARTICLE 107.31 OF THE STANDARD SPECIFICATIONS. THE CONTRACTOR SHALL BE RESPONSIBLE FOR CONTACTING THE UTILITY OWNERS SO THAT THEIR FACILITIES MAY BE ADJUSTED OR RELOCATED, IF NECESSARY, PRIOR TO CONSTRUCTION OPERATIONS.

THE CONTRACTOR SHALL BE RESPONSIBLE FOR ANY DAMAGE OR DESTRUCTION OF PUBLIC OR PRIVATE PROPERTY IN ACCORDANCE WITH THE SPECIAL PROVISIONS AND ARTICLE 107.20 OF THE "STANDARD SPECIFICATIONS" AND SHALL RESTORE SUCH PROPERTY AT HIS OWN EXPENSE. COORDINATION OF ALL UTILITY WORK INVOLVED IN THE CONSTRUCTION AREA WILL BE DISCUSSED AT A PRE-CONSTRUCTION CONFERENCE. THE CONTRACTOR SHALL USE ALL NECESSARY PRECAUTIONS AND PROTECTIVE MEASURES REQUIRED TO MAINTAIN EXISTING UTILITIES, SEWERS, AND APPURTENANCES THAT MUST BE KEPT IN OPERATION.

BEFORE STARTING ANY EXCAVATION, THE CONTRACTOR SHALL CALL "JULIE" AT 1-800-892-0123 FOR FIELD LOCATIONS OF BURIED ELECTRIC, TELEPHONE, GAS AND CABLE TELEVISION FACILITIES IN ACCORDANCE WITH STATE LAW.

DRAINAGE

WHENEVER DURING CONSTRUCTION OPERATIONS ANY LOOSE MATERIAL IS DEPOSITED IN THE FLOW LINE OF DRAINAGE STRUCTURES SUCH THAT THE NATURAL FLOW OF WATER IS OBSTRUCTED, IT SHALL BE REMOVED AT THE CLOSE OF EACH WORKING DAY. AT THE CONCLUSION OF CONSTRUCTION OPERATIONS, ALL UTILITY STRUCTURES SHALL BE CLEANED AND FREE FROM DIRT AND DEBRIS PER ARTICLE 104.06.

ONLY PRECAST CONCRETE ADJUSTMENT RINGS, MAXIMUM OF 12" IN HEIGHT, WILL BE ALLOWED IN THE ADJUSTMENT OR RECONSTRUCTION OF CATCH BASIN, MANHOLE, INLET AND VALVE VAULT STRUCTURES. COMMON BRICK WILL NOT BE ALLOWED.

MISCELLANEOUS

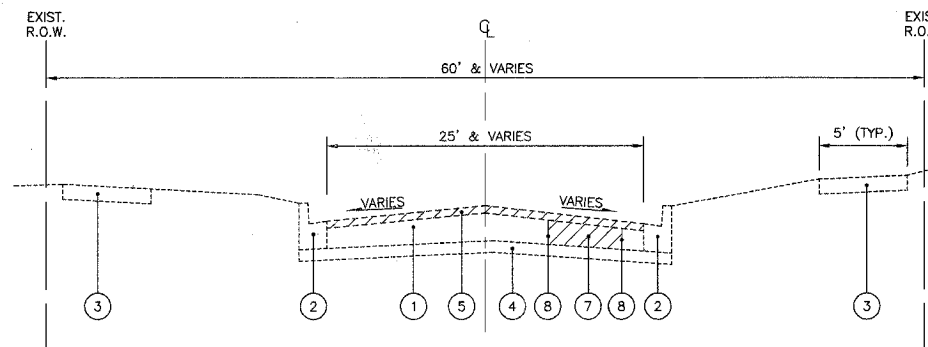
THE CONTRACTOR SHALL MAINTAIN ACCESS TO ABUTTING PROPERTY AT ALL TIMES DURING CONSTRUCTION OF THIS PROJECT.

IT SHALL BE THE CONTRACTOR'S RESPONSIBILITY TO VERIFY ALL DIMENSIONS AND CONDITIONS EXISTING IN THE FIELD PRIOR TO ORDERING MATERIALS AND BEGINNING CONSTRUCTION.

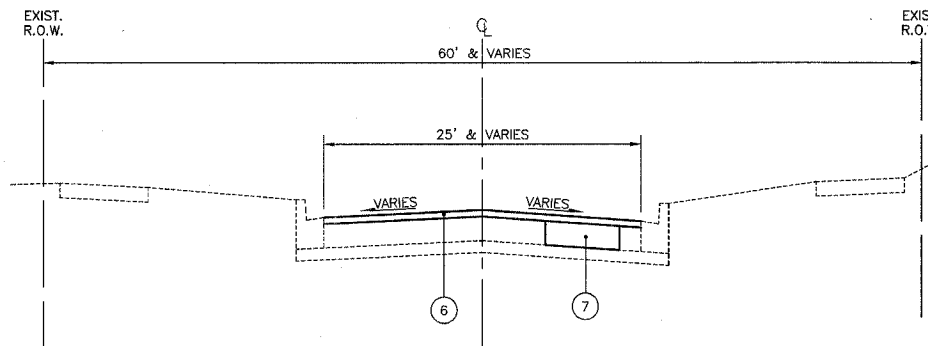
THE CONTRACTOR SHALL SAW CUT (PARTIAL DEPTH) THE JOINTS AT THE LIMITS OF RESURFACING AS SHOWN ON THE PLANS OR DIRECTED BY THE ENGINEER. THE CONTRACTOR SHALL SAW CUT (FULL DEPTH) AT THE LIMITS OF FULL DEPTH PATCHING LOCATIONS AS SHOWN ON THE PLANS OR DIRECTED BY THE ENGINEER. ALL SAWCUTTING SHALL BE INCLUDED IN THE COST OF REMOVAL ITEMS, AND SHALL BE PERFORMED PRIOR TO BEGINNING REMOVAL UNLESS OTHERWISE NOTED.

THE CONTRACTOR SHALL BE REQUIRED TO DISPOSE OF GRINDINGS, BAD FRAME AND GRATES, EXCAVATED MATERIAL, AND ALL DEBRIS FROM CONSTRUCTION OPERATIONS, AT HIS EXPENSE. NO PAYMENT WILL BE MADE FOR HAULING OR TRUCKING MATERIAL TO A LOCATION, PROVIDED BY THE CONTRACTOR, OUTSIDE THE LIMITS OF THE IMPROVEMENT. STOCKPILING OF EXCAVATED MATERIAL OR DEBRIS IS NOT ALLOWED.

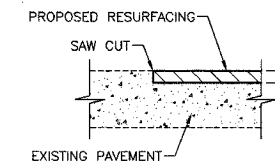
THE QUANTITIES FOR CLASS D PATCHES, TYPE I-IV WILL NOT EXCEED WHAT IS STATED IN THE SUMMARY OF QUANTITIES.



EXISTING TYPICAL SECTION
ALL STREETS IN PROJECT



PROPOSED TYPICAL SECTION
ALL STREETS IN PROJECT



BUTT-JOINT DETAIL

LEGEND

- ① EXISTING BITUMINOUS PAVEMENT
- ② EXISTING CONCRETE CURB AND GUTTER
- ③ EXISTING P.C.C. SIDEWALK
- ④ EXISTING SUBGRADE
- ⑤ HOT-MIX ASPHALT SURFACE REMOVAL, 2"
- ⑥ PROPOSED HOT-MIX ASPHALT SURFACE COURSE, MIX "C", N50, 2"
- ⑦ CLASS D PATCH (BASE COURSE WILL BE A MINIMUM OF 6")
- ⑧ SAW CUT (FULL DEPTH)

HOT-MIX ASPHALT MIXTURE REQUIREMENT

ITEM	AC TYPE	VOIDS
HOT-MIX ASPHALT SURFACE COURSE, MIX "C", N50	PG 64-22	4% @ 50 GYR.
CLASS D PATCHES, TYPE I-IV, 6 INCH, IL-19 mm	PG 64-22	4% @ 70 GYR.

NOTE: THE UNIT WEIGHT TO CALCULATE ALL H.M.A. SURFACE MIXTURE QUANTITIES IS 112 LBS/SQ YD/INCH THICKNESS

WHEN RAP EXCEEDS 20%, THE NEW ASPHALT BINDER IN THE MIX SHALL BE PG 58-22.

REVISIONS	
NAME	DATE

ILLINOIS DEPARTMENT OF TRANSPORTATION

GENERAL NOTES & TYPICAL SECTIONS

DATE: 2-23-07
CHECKED BY: D.N.M.

..1974_Typ_Sec.dwg[layout1]
PLOTIED: Friday, 23 Feb 2007 - 7:21am
SAVED: Thursday, 22 Feb 2007 - 4:16pm