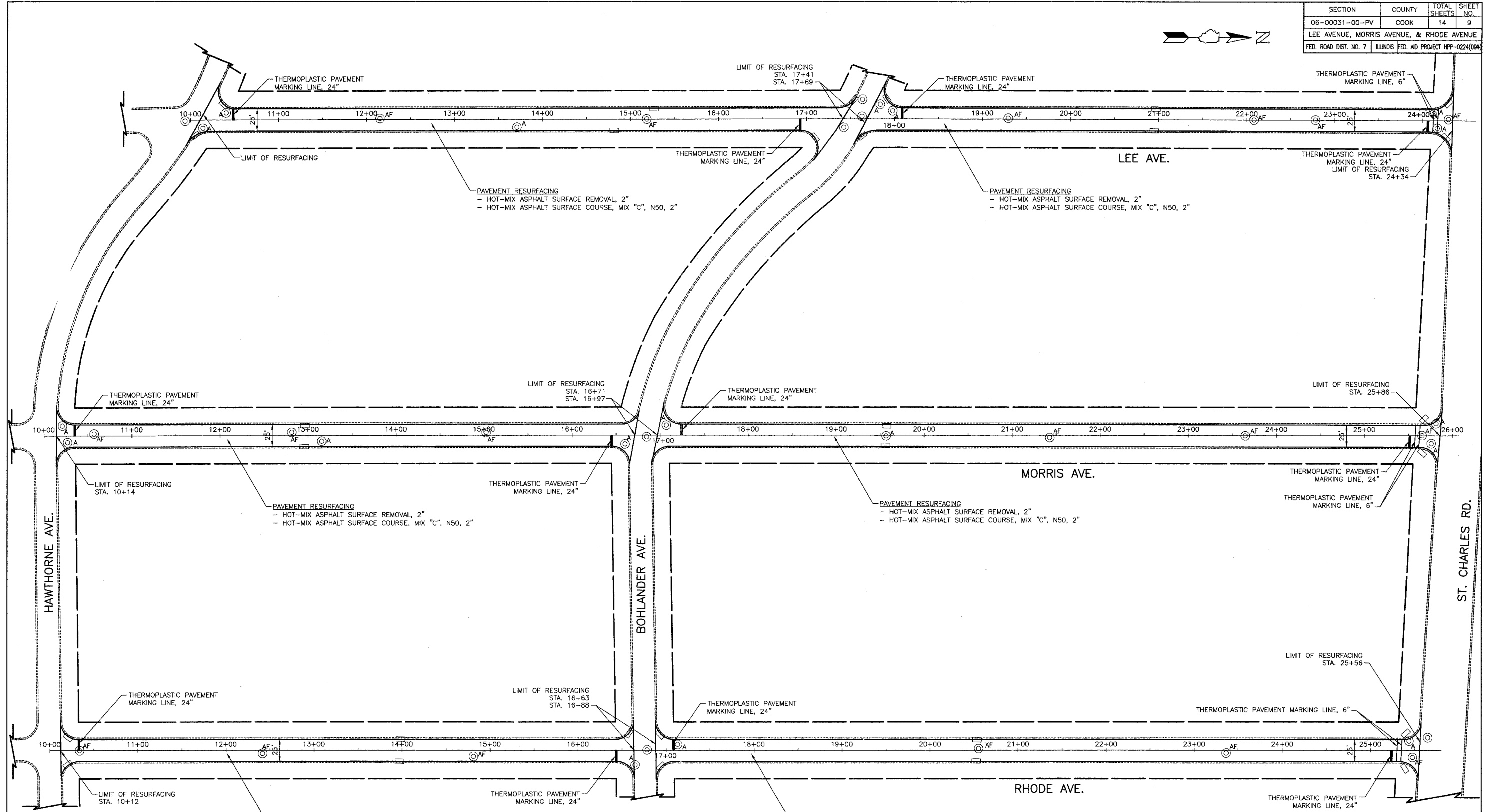


SECTION	COUNTY	TOTAL SHEETS	SHEET NO.
06-00031-00-PV	COOK	14	9
LEE AVENUE, MORRIS AVENUE, & RHODE AVENUE			
FED. ROAD DIST. NO. 7 ILLINOIS FED. AID PROJECT HFP-0224(00A)			



LEGEND

- A FRAMES AND LIDS TO BE ADJUSTED (SPECIAL)
- AF FRAMES AND LIDS TO BE ADJUSTED (SPECIAL)
FRAMES AND LIDS, TYPE 1, CLOSED LID
- ⊙ EXISTING MANHOLE
- EXISTING INLET

PAVEMENT RESURFACING
 - HOT-MIX ASPHALT SURFACE REMOVAL, 2"
 - HOT-MIX ASPHALT SURFACE COURSE, MIX "C", N50, 2"

PAVEMENT RESURFACING
 - HOT-MIX ASPHALT SURFACE REMOVAL, 2"
 - HOT-MIX ASPHALT SURFACE COURSE, MIX "C", N50, 2"

REVISIONS	
NAME	DATE

ILLINOIS DEPARTMENT OF TRANSPORTATION

RESURFACING PLAN

LEE AVENUE, MORRIS AVENUE, & RHODE AVENUE
 (BOHLANDER AVE. TO ST. CHARLES RD.)

HORIZ: 50 0 50
 SCALE IN FEET

DATE: 2-23-07
 CHECKED BY: D.N.M.

..\\1974_plan_06.dwg[Layout1]
 PLOTTED: Friday, 23 Feb 2007 - 7:07am
 SAVED: Thursday, 22 Feb 2007 - 4:33pm

