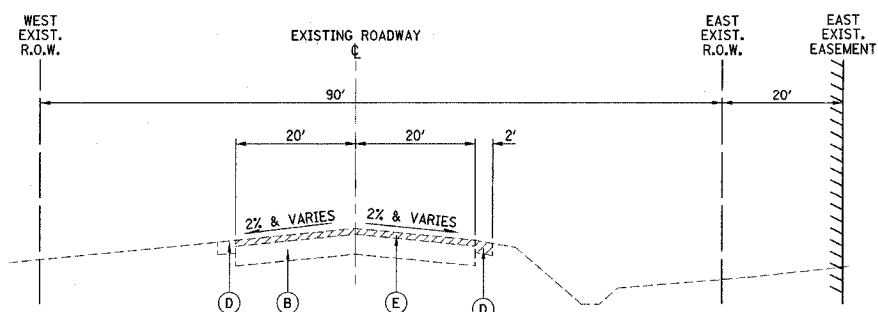


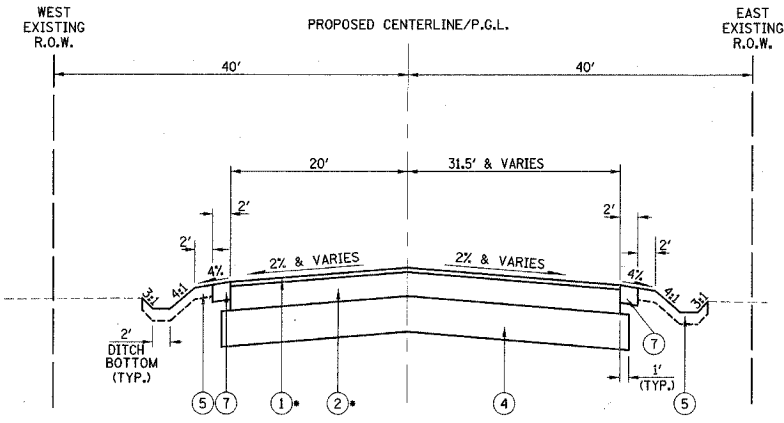
F.A.U. RTE.	SECTION	COUNTY	TOTAL SHEETS	SHEET NO.
3869	06-00030-00-FF	MCHENRY	56	7
DETAILS				
FED. ROAD DIST. NO. 7 ILLINOIS FED. AID PROJECT M-800364(I)				



EXISTING TYPICAL SECTION

HALIGUS ROAD
STA. 326+64 TO STA. 328+40.40

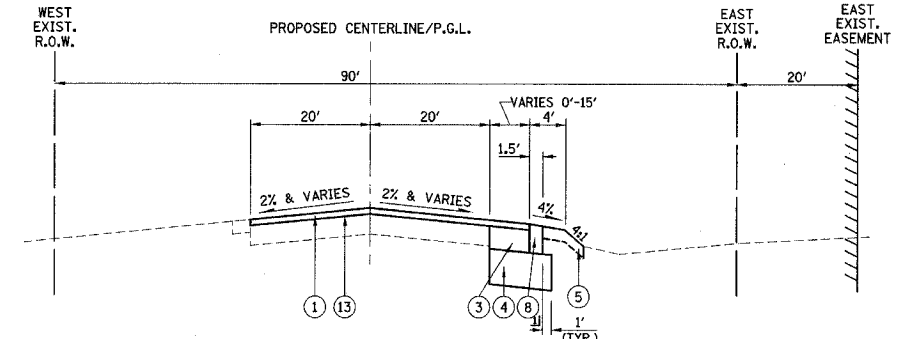
REMOVAL ITEMS



PROPOSED TYPICAL SECTION

HALIGUS ROAD
STA. 300+25.91 TO STA. 301+05.04

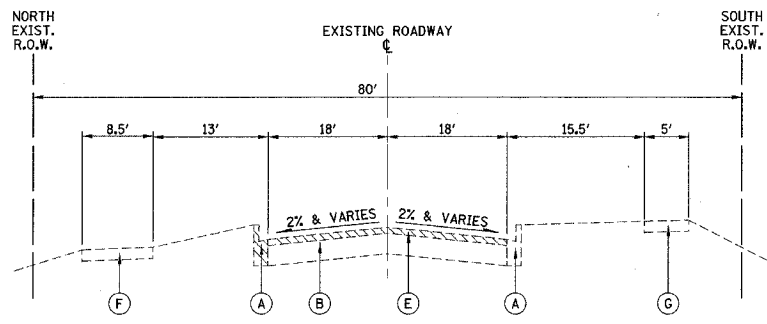
PAID FOR AS "HOT-MIX ASPHALT PAVEMENT (FULL DEPTH), 8"



PROPOSED TYPICAL SECTION

HALIGUS ROAD
STA. 326+64 TO STA. 328+40.40

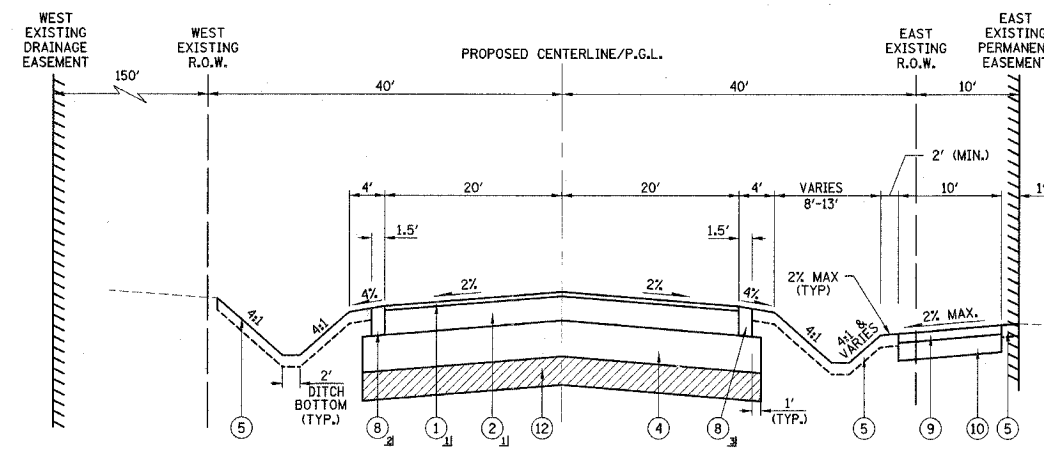
PAID FOR AS "HOT-MIX ASPHALT PAVEMENT (FULL DEPTH), 8"



EXISTING TYPICAL SECTION

REED ROAD
STA. 397+96.16 TO STA. 400+00

REMOVAL ITEMS

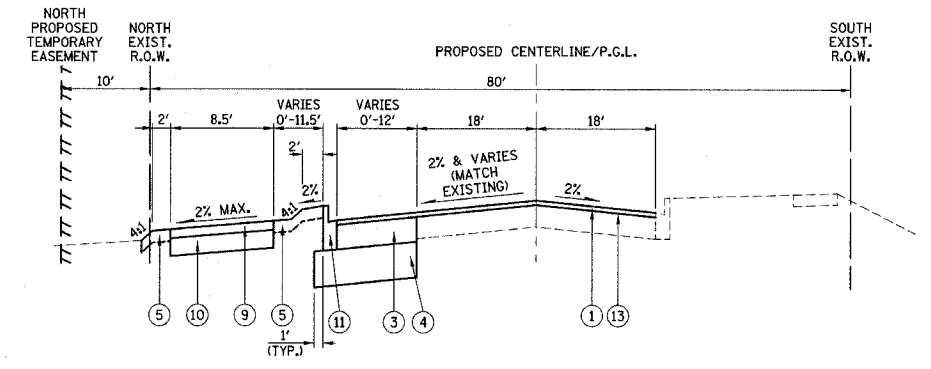


PROPOSED TYPICAL SECTION

HALIGUS ROAD
STA. 301+05.04 TO STA. 326+00
SEE PLAN AND PROFILE SHEETS FOR STATION LIMITS OF EXISTING DRAINAGE EASEMENTS

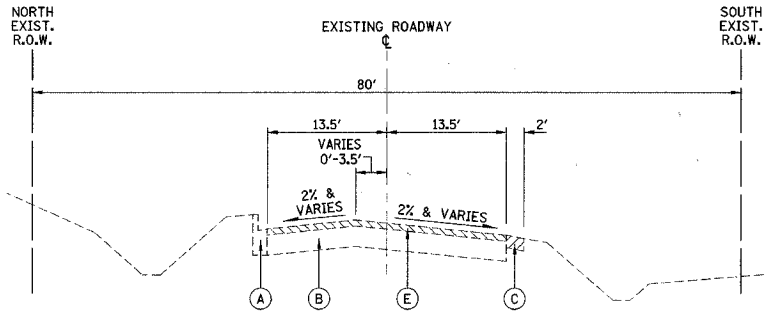
- 1 PAID FOR AS "HOT-MIX ASPHALT PAVEMENT (FULL DEPTH), 8"
- 2 STA. 325+68 TO STA. 326+00: COMBINATION CONCRETE CURB AND GUTTER, TYPE B-6.12
- 3 STA. 301+05.04 TO STA. 302+20: COMBINATION CONCRETE CURB AND GUTTER, TYPE B-6.24
- 4 STA. 325+50 TO STA. 326+00: COMBINATION CONCRETE CURB AND GUTTER, TYPE B-6.12

REMOVAL ITEMS



PROPOSED TYPICAL SECTION

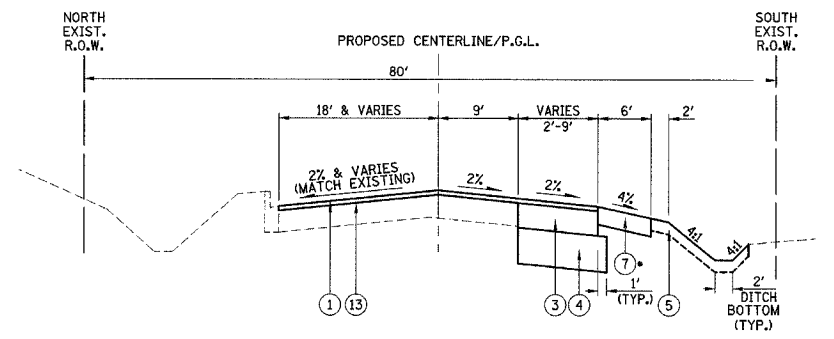
REED ROAD
STA. 397+96.16 TO STA. 400+00



EXISTING TYPICAL SECTION

REED ROAD
STA. 400+00 TO STA. 410+66.86

REMOVAL ITEMS



PROPOSED TYPICAL SECTION

REED ROAD
STA. 400+00 TO STA. 410+66.86

PAID FOR AS "HOT-MIX ASPHALT PAVEMENT (FULL DEPTH), 8"

- PROPOSED LEGEND**
- 1 HOT-MIX ASPHALT SURFACE COURSE, MIX D, N50 (2")
 - 2 HOT-MIX ASPHALT BINDER COURSE, IL-19.0, N50 (6")
 - 3 HOT-MIX ASPHALT BASE COURSE, 6"
 - 4 AGGREGATE SUBGRADE, 12"
 - 5 TOPSOIL FURNISH & PLACE, 4" SEEDING, CLASS 1A
 - 6 STRIP REFLECTIVE CRACK CONTROL TREATMENT
 - 7 AGGREGATE SHOULDER, TYPE B, 6"
 - 8 PORTLAND CEMENT CONCRETE SHOULDERS 8"
 - 9 HOT-MIX ASPHALT SURFACE COURSE, MIX C, N50 (3 IN.)
 - 10 SUB-BASE GRANULAR MATERIAL, TYPE B 6"
 - 11 COMBINATION CONCRETE CURB AND GUTTER, TYPE B-6.12
 - 12 REMOVAL AND DISPOSAL OF UNSUITABLE MATERIAL POROUS GRANULAR EMBANKMENT, SUBGRADE SEE ROADWAY SOILS INVESTIGATION BY MIDLAND STANDARD ENGINEERING, INC. DATED NOVEMBER 30, 2006 AND THE CROSS SECTIONS FOR ADDITIONAL INFORMATION.
 - 13 AREA REFLECTIVE CRACK CONTROL TREATMENT

MIXTURE REQUIREMENT

PAY ITEM	AC TYPE	VOIDS
HOT-MIX ASPHALT PAVEMENT (FULL-DEPTH)		
HOT-MIX ASPHALT SURFACE COURSE, MIX "D", N50 (IL 9.5 MM); 2"	PG 64-22	4% @ 50 GYR.
HOT-MIX ASPHALT BINDER COURSE, IL-19.0, N50; 6"	PG 64-22 / 58-22	4% @ 50 GYR.
PAVEMENT WIDENING		
HOT-MIX ASPHALT SURFACE COURSE, MIX "D", N50 (IL 9.5 MM); 2"	PG 64-22	4% @ 50 GYR.
HOT-MIX ASPHALT BASE COURSE (HMA BINDER IL-19 MM); 6"	PG 64-22 / 58-22	4% @ 50 GYR.
RESURFACING		
HOT-MIX ASPHALT SURFACE COURSE, MIX "D", N50 (IL 9.5 MM); 2"	PG 64-22	4% @ 50 GYR.
SHARED USE PATH		
HOT-MIX ASPHALT SURFACE COURSE, MIX "C", N50 (IL 9.5 MM); 3"	PG 64-22	4% @ 50 GYR.
PATCHING		
CLASS D PATCHES (HMA BINDER IL-19 MM); 8"	PG 64-22 / 58-22	4% @ 70 GYR.

NOTES: THE UNIT WEIGHT USED TO CALCULATE ALL HOT-MIX ASPHALT SURFACE MIXTURES IS 112 LB/SY-IN. WHEN RAP EXCEEDS 20%, THE NEW ASPHALT BINDER IN THE MIX SHALL BE PG 58-22.

- EXISTING LEGEND**
- A COMBINATION CONCRETE CURB & GUTTER, TYPE B-6.12
 - B BITUMINOUS CONCRETE PAVEMENT
 - C AGGREGATE SHOULDER
 - D CONCRETE SHOULDER
 - E HOT-MIX ASPHALT SURFACE REMOVAL, SPECIAL (2" MIN. & VARIES)
 - F BITUMINOUS PATH
 - G CONCRETE SIDEWALK

ILLINOIS DEPARTMENT OF TRANSPORTATION

TYPICAL SECTIONS

HALIGUS ROAD & REED ROAD

DATE: 3/7/07
DESIGNED BY: KRK
CHECKED BY: JRV