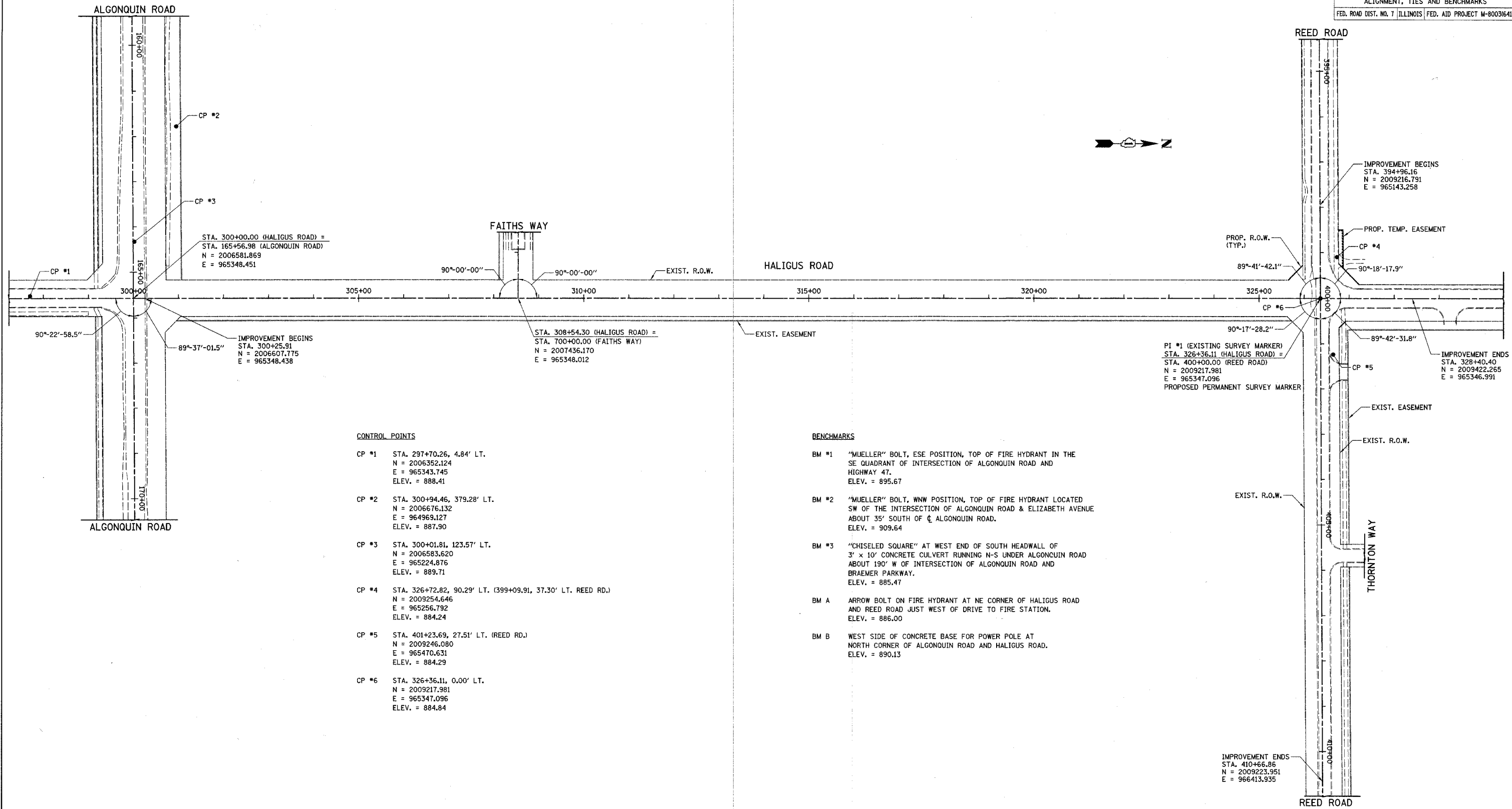


F.A.U. RTE.	SECTION	COUNTY	TOTAL SHEETS	SHEET NO.
3869	06-00030-00-FP	MCHENRY	56	9
ALIGNMENT, TIES AND BENCHMARKS				
FED. ROAD DIST. NO. 7 ILLINOIS FED. AID PROJECT M-800364D				



CONTROL POINTS

- CP #1 STA. 297+70.26, 4.84' LT.
N = 2006352.124
E = 965343.745
ELEV. = 888.41
- CP #2 STA. 300+94.46, 379.28' LT.
N = 2006676.132
E = 964969.127
ELEV. = 887.90
- CP #3 STA. 300+01.81, 123.57' LT.
N = 2006583.620
E = 965224.876
ELEV. = 889.71
- CP #4 STA. 326+72.82, 90.29' LT. (399+09.91, 37.30' LT. REED RD.)
N = 2009254.646
E = 965256.792
ELEV. = 884.24
- CP #5 STA. 401+23.69, 27.51' LT. (REED RD.)
N = 2009246.080
E = 965470.631
ELEV. = 884.29
- CP #6 STA. 326+36.11, 0.00' LT.
N = 2009217.981
E = 965347.096
ELEV. = 884.84

BENCHMARKS

- BM #1 "MUELLER" BOLT, ESE POSITION, TOP OF FIRE HYDRANT IN THE SE QUADRANT OF INTERSECTION OF ALGONQUIN ROAD AND HIGHWAY 47.
ELEV. = 895.67
- BM #2 "MUELLER" BOLT, WNW POSITION, TOP OF FIRE HYDRANT LOCATED SW OF THE INTERSECTION OF ALGONQUIN ROAD & ELIZABETH AVENUE ABOUT 35' SOUTH OF CL ALGONQUIN ROAD.
ELEV. = 909.64
- BM #3 "CHISELED SQUARE" AT WEST END OF SOUTH HEADWALL OF 3' x 10' CONCRETE CULVERT RUNNING N-S UNDER ALGONQUIN ROAD ABOUT 190' W OF INTERSECTION OF ALGONQUIN ROAD AND BRAEMER PARKWAY.
ELEV. = 885.47
- BM A ARROW BOLT ON FIRE HYDRANT AT NE CORNER OF HALIGUS ROAD AND REED ROAD JUST WEST OF DRIVE TO FIRE STATION.
ELEV. = 886.00
- BM B WEST SIDE OF CONCRETE BASE FOR POWER POLE AT NORTH CORNER OF ALGONQUIN ROAD AND HALIGUS ROAD.
ELEV. = 890.13

ILLINOIS DEPARTMENT OF TRANSPORTATION

ALIGNMENT, TIES AND BENCHMARKS

HALIGUS ROAD

SCALE IN FEET

DATE: 3/7/07
DESIGNED BY: DJK
CHECKED BY: JRJ