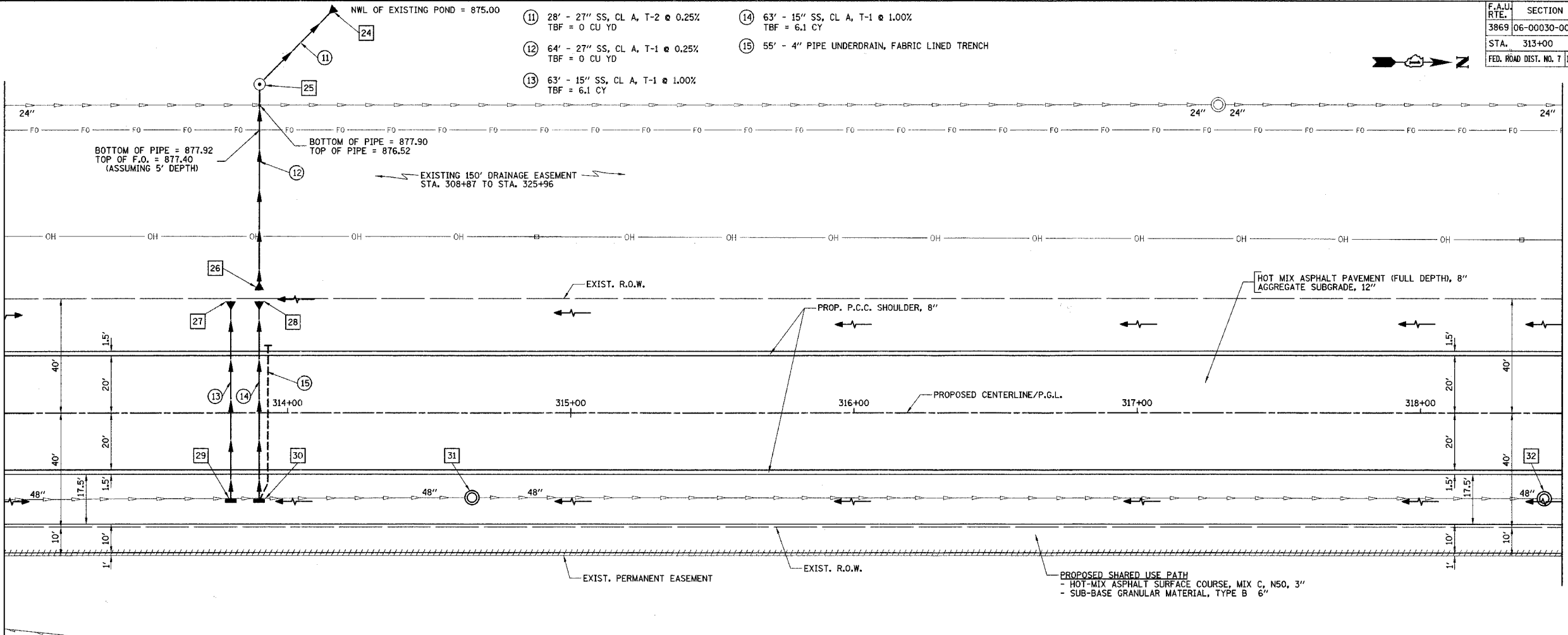


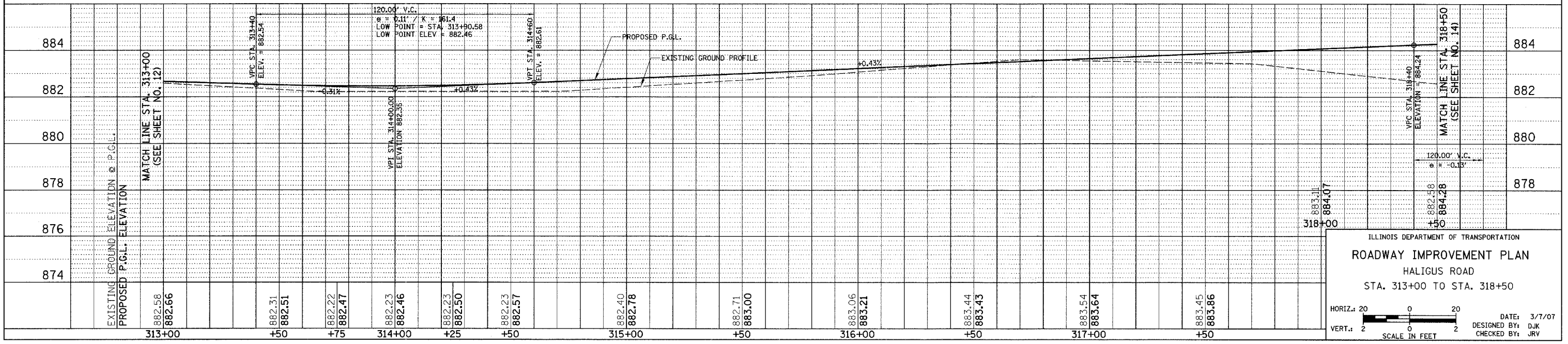
F.A.U. RTE.	SECTION	COUNTY	TOTAL SHEETS	SHEET NO.
3869	06-00030-00-FP	MCHENRY	56	13
STA. 313+00		TO STA. 318+50		
FED. ROAD DIST. NO. 7		ILLINOIS		FED. AID PROJECT M-8003641

- 24 STA. 314+6.5, 141.5' LT  
PRC FLARED END SECTION, 27"  
INV = 875.00
- 25 STA. 313+90, 115' LT  
MH, T-A, 5'-DIA.,  
T-1 FRAME AND CLOSED LTD  
RIM = 882.40  
INV = 878.13 (27" E)  
INV = 875.08 (27" NW)
- 26 STA. 313+90, 43' LT  
PRC FLARED END SECTION, 27"  
WITH GRATE  
INV = 878.30
- 27 STA. 313+80, 39' LT  
PRC FLARED END SECTION, 15"  
INV = 878.35
- 28 STA. 313+90, 39' LT  
PRC FLARED END SECTION, 15"  
INV = 878.30
- 29 STA. 313+80, 30.80' RT  
INLET, T-A, T-8 GRATE  
RIM = 880.55  
INV = 879.05 (15' W)
- 30 STA. 313+90, 30.80' RT  
INLET, T-A, T-8 GRATE  
RIM = 880.50  
INV = 879.00 (15' W)  
INV = 879.33 (4' N)
- 31 STA. 314+65.14, 29.63' RT  
MH TO BE RECONSTRUCTED  
PROP. RIM = 879.06
- 32 STA. 318+43.69, 29.92' RT  
MH TO BE RECONSTRUCTED  
PROP. RIM = 881.59



- NOTES:**
- LOCATIONS OF FIELD TILES HAVE BEEN SHOWN BASED ON PLANS TITLED "REGIONAL STORMWATER DRAINAGE SYSTEM" DATED 03/01/99.
  - THE EXISTING MANHOLES ON THE 48" SEWER WERE INSTALLED AS PART OF THE "REGIONAL STORMWATER DRAINAGE SYSTEM". ACCORDING TO THE PLANS FOR THE STORM SEWER INSTALLATION, THE MANHOLE LIDS WERE INSTALLED APPROXIMATELY 2' BELOW EXISTING GRADE. ALL WORK REQUIRED TO LOCATE AND EXPOSE THE EXISTING STRUCTURES SHALL BE INCLUDED IN THE COST OF "MANHOLES TO BE RECONSTRUCTED."

HALIGUS ROAD



ILLINOIS DEPARTMENT OF TRANSPORTATION  
**ROADWAY IMPROVEMENT PLAN**  
 HALIGUS ROAD  
 STA. 313+00 TO STA. 318+50

HORIZ. SCALE: 1" = 20'  
 VERT. SCALE: 1" = 2'

DATE: 3/7/07  
 DESIGNED BY: DJK  
 CHECKED BY: JRJ