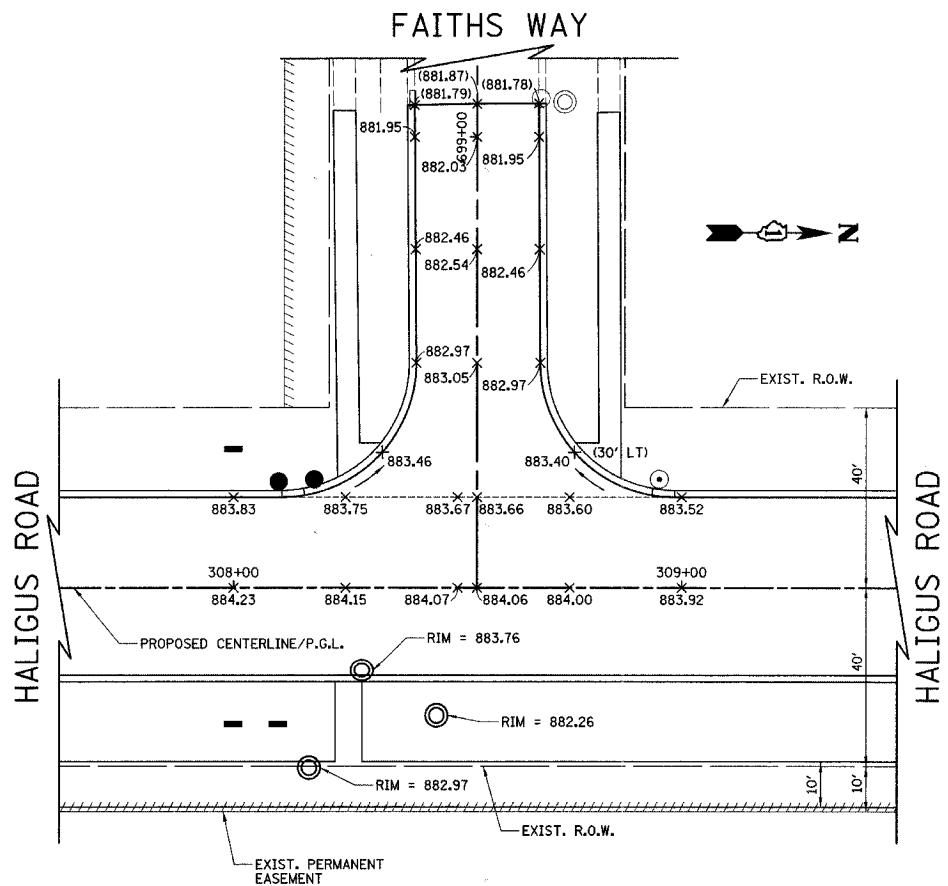
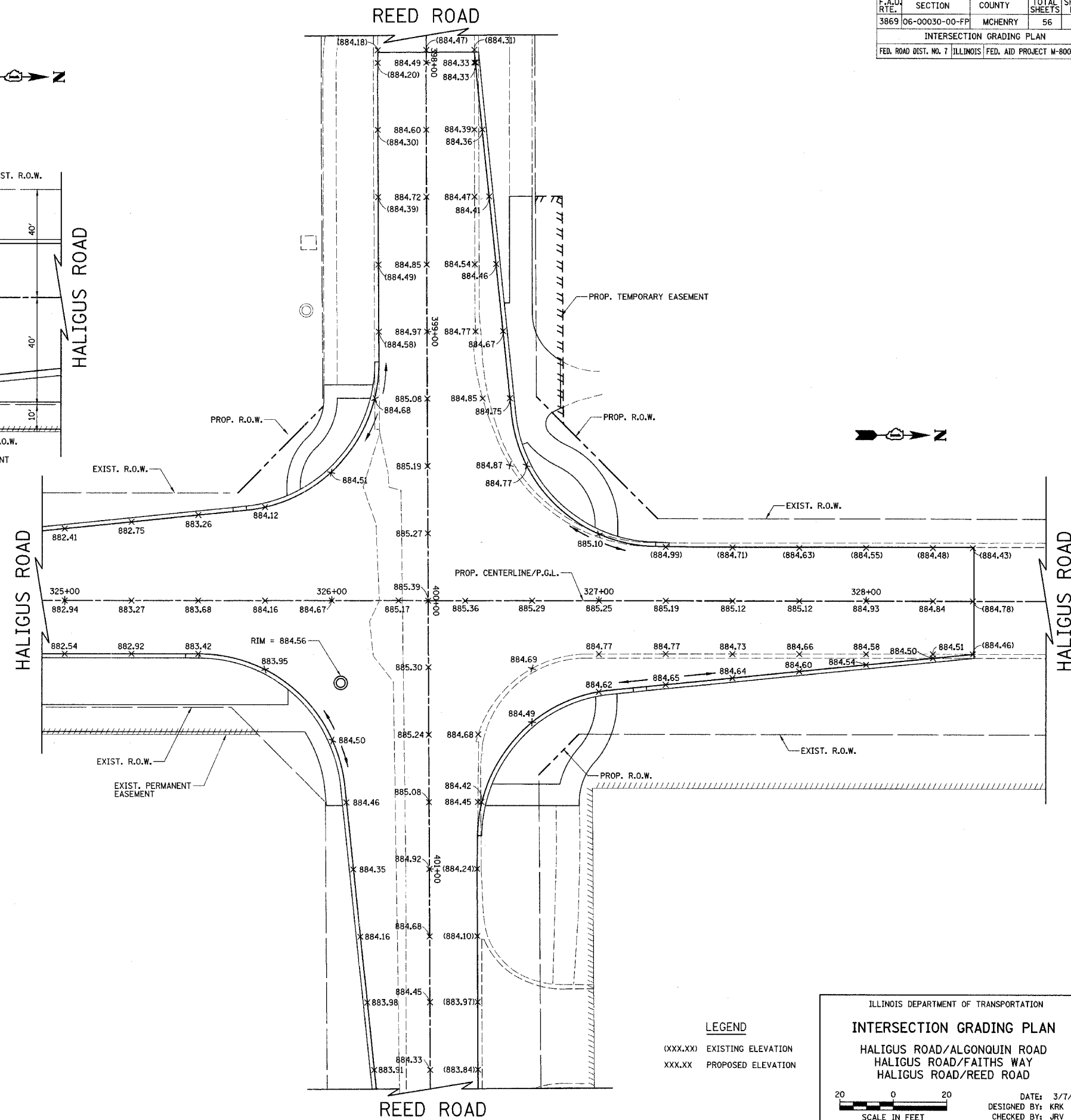
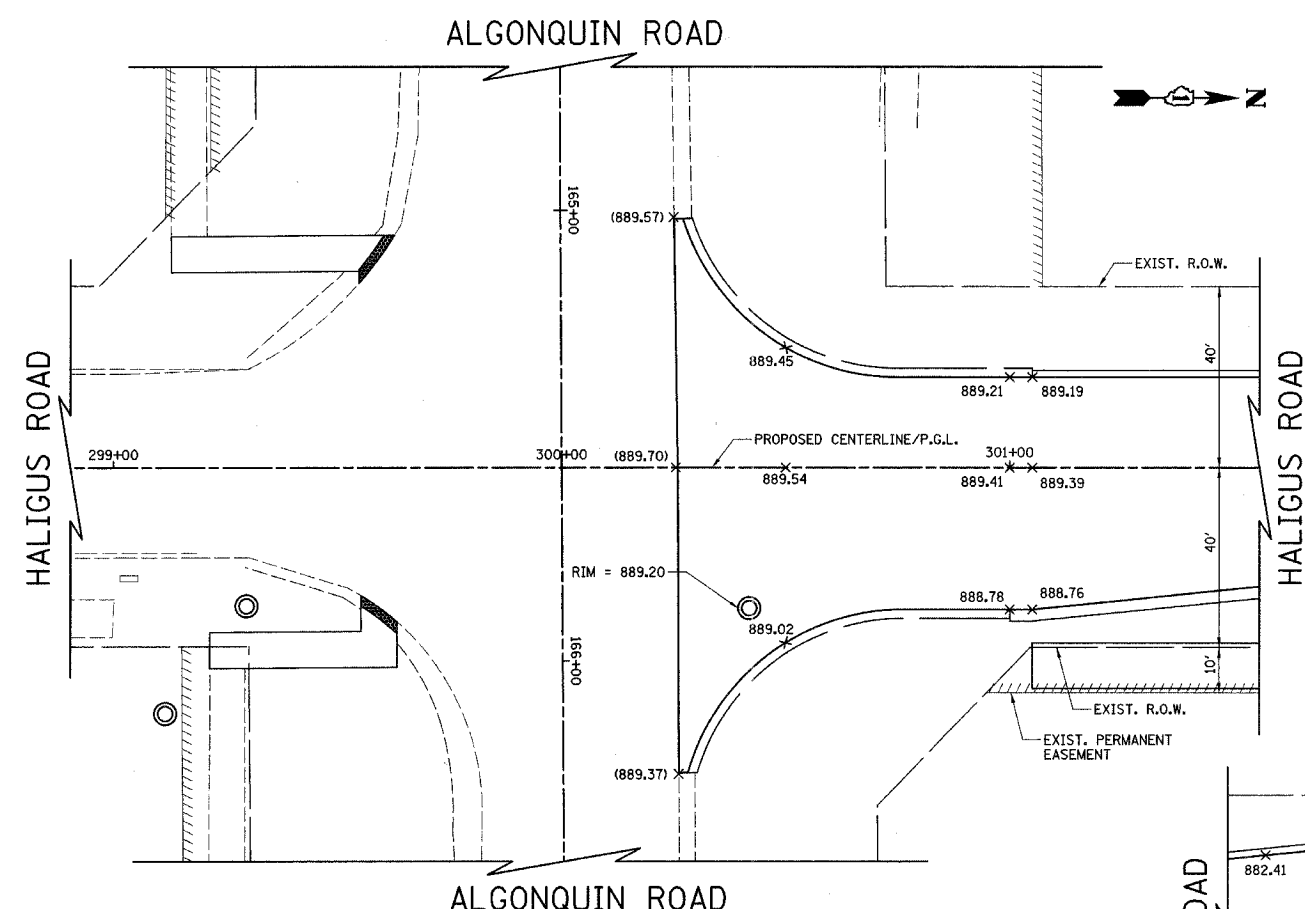


F.A.D. RTE.	SECTION	COUNTY	TOTAL SHEETS	SHEET NO.
3869	06-00030-00-FP	MCHENRY	56	20

INTERSECTION GRADING PLAN
 FED. ROAD DIST. NO. 7 (ILLINOIS) FED. AID PROJECT M-80036(A1)



LEGEND
 (XXX.XX) EXISTING ELEVATION
 XXX.XX PROPOSED ELEVATION

ILLINOIS DEPARTMENT OF TRANSPORTATION

INTERSECTION GRADING PLAN

HALIGUS ROAD/ALGONQUIN ROAD
 HALIGUS ROAD/FAITHS WAY
 HALIGUS ROAD/REED ROAD

SCALE IN FEET

DATE: 3/7/07
 DESIGNED BY: KRK
 CHECKED BY: JRV