

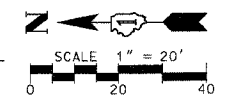
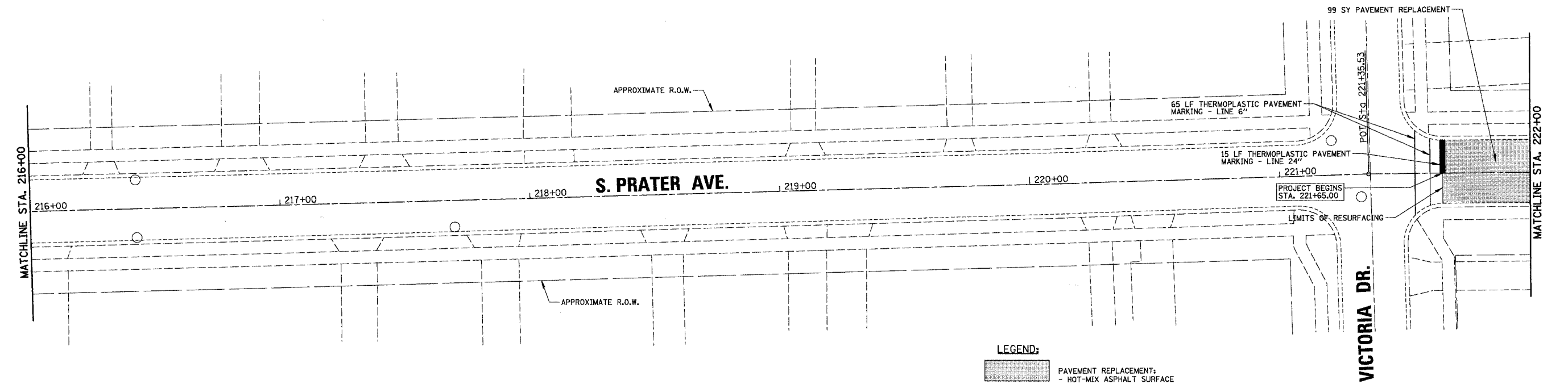
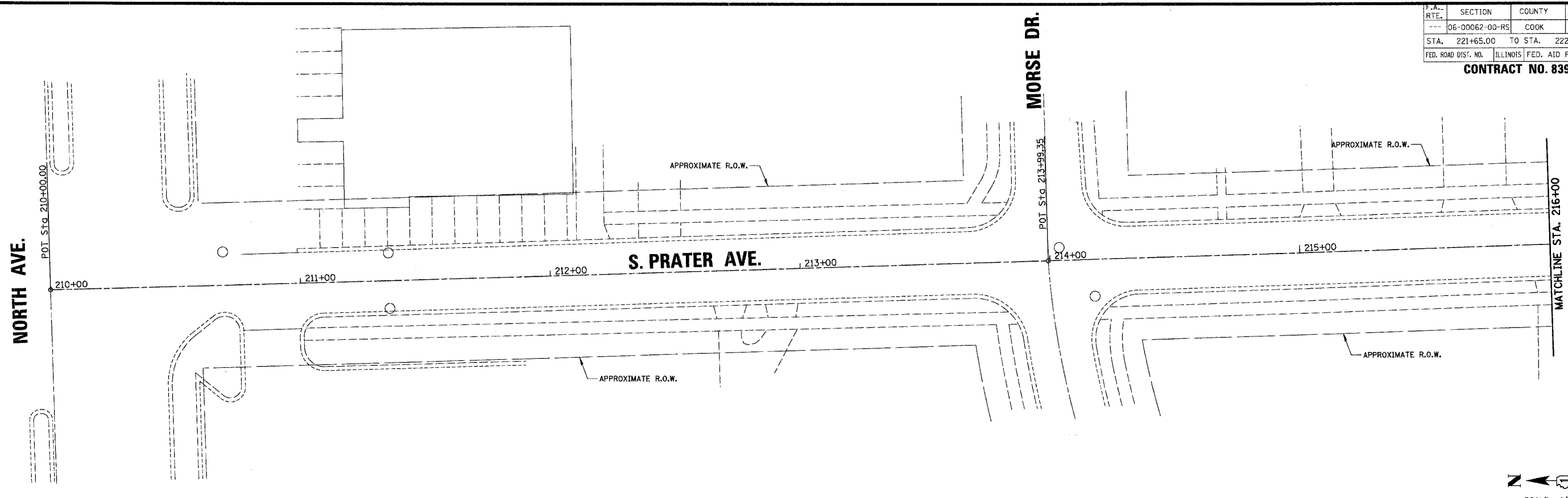
P.A. RTE.	SECTION	COUNTY	TOTAL SHEETS	SHEET NO.
---	06-00062-00-RS	COOK	41	25
STA. 221+65.00		TO STA. 222+00.00		
FED. ROAD DIST. NO.		ILLINOIS FED. AID PROJECT		

CONTRACT NO. 83920


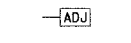
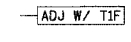
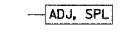
DATE	BY
SURVEYED	
PLOTTED / CHECKED	
S.M. NOTED	
STRUCTURE NOTATIONS DRPD	
NOTE BOOK NO.	

CHRISTOPHER B. BURKE ENGINEERING LTD. PLAN
 9575 West Higgins Road, Suite 600
 Rosemont, Illinois 60018
 (847) 823-0500

DATE	BY
SURVEYED	
PLOTTED / CHECKED	
S.M. NOTED	
STRUCTURE NOTATIONS DRPD	
NOTE BOOK NO.	



LEGEND:

-  PAVEMENT REPLACEMENT:
 - HOT-MIX ASPHALT SURFACE REMOVAL, 3 1/4"
 - HOT-MIX ASPHALT SURFACE COURSE MIX "C", NSO - 2 1/2"
 - POLY. LEVELING BINDER (MACHINE METHOD) IL-4.75, NSO - 3/4"
-  DRAINAGE STRUCTURE TO BE ADJUSTED
-  CATCH BASIN TO BE ADJUSTED WITH NEW TYPE 1 FRAME
-  DRAINAGE STRUCTURE ADJUSTMENT, (SPECIAL)

REVISIONS	
NAME	DATE

ILLINOIS DEPARTMENT OF TRANSPORTATION
 - S. PRATER AVENUE
 CITY OF NORTHLAKE
 VARIOUS FEDERAL GRANTS
 SCALE 1" = 20'
 DATE 2/20/2007
 DRAWN BY AMP
 CHECKED BY MW