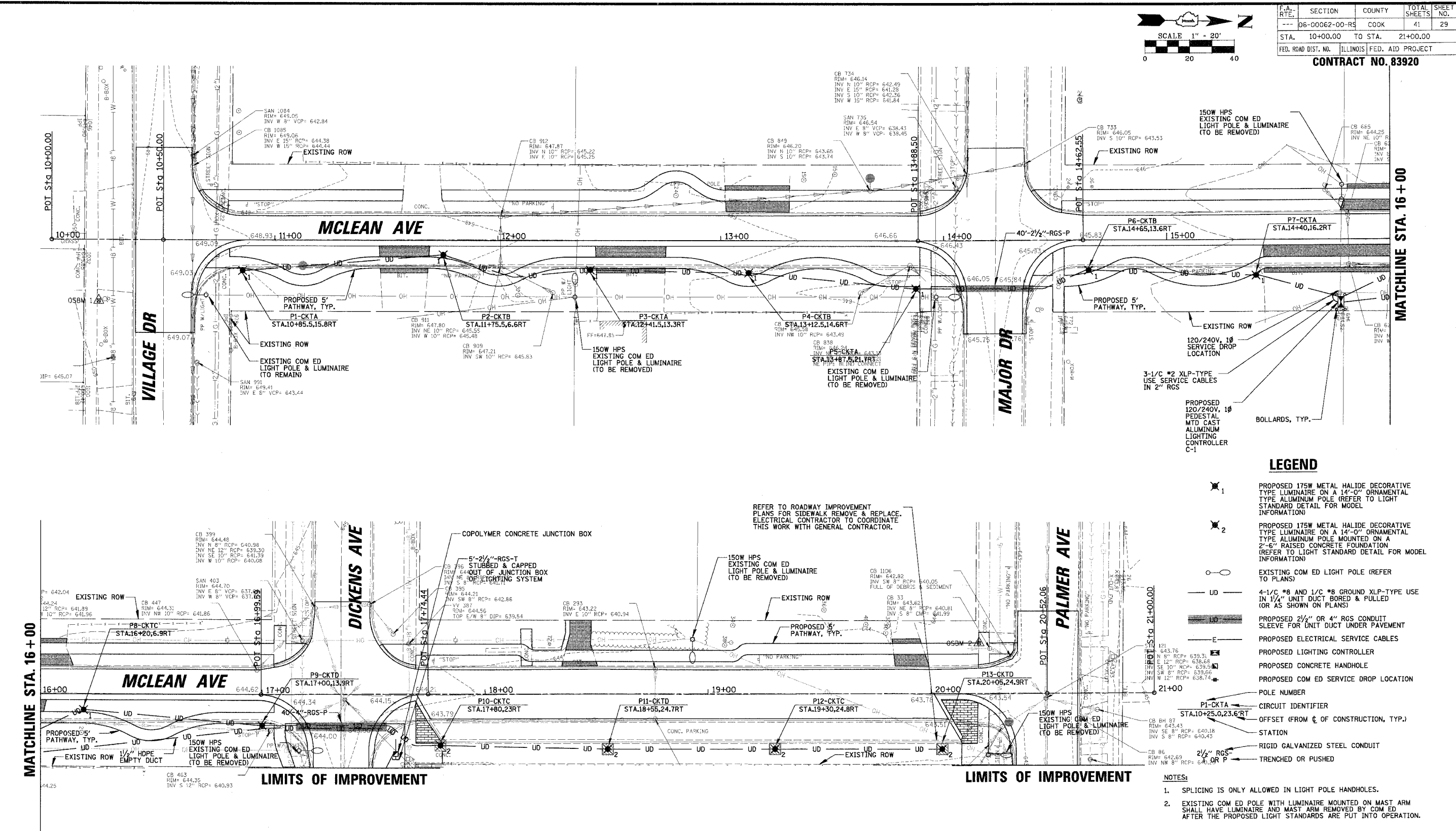


DATE: _____ BY: _____
 SURVEYED: _____
 ALIGNED: _____
 CHECKED: _____
 DATE: _____ BY: _____
 SURVEYED: _____
 ALIGNED: _____
 CHECKED: _____
 DATE: _____ BY: _____
 SURVEYED: _____
 ALIGNED: _____
 CHECKED: _____

CHRISTOPHER B. BURKE ENGINEERING LTD.
 9575 West Higgins Road, Suite 600
 Rosemont, Illinois 60018
 (847) 823-0500

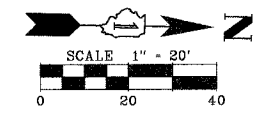
DATE: _____ BY: _____
 SURVEYED: _____
 ALIGNED: _____
 CHECKED: _____
 DATE: _____ BY: _____
 SURVEYED: _____
 ALIGNED: _____
 CHECKED: _____



REVISIONS		ILLINOIS DEPARTMENT OF TRANSPORTATION
NAME	DATE	
		McLEAN AVENUE PROPOSED LIGHTING PLAN CITY OF NORTHLAKE - McLEAN AVENUE SCALE 1" = 20' DATE 2/20/2007 DRAWN BY KB CHECKED BY JPC

CHRISTOPHER B. BURKE ENGINEERING, LTD.
 9575 W. Higgins Road, Suite 600
 Rosemont, Illinois 60018
 (847) 823-0500

F.A. RTE.	SECTION	COUNTY	TOTAL SHEETS	SHEET NO.
---	06-00062-00-RS	COOK	41	29
STA.	10+00.00	TO STA.	21+00.00	
FED. ROAD DIST. NO.	ILLINOIS	FED. AID PROJECT	CONTRACT NO. 83920	



- LEGEND**
- 1 PROPOSED 175W METAL HALIDE DECORATIVE TYPE LUMINAIRE ON A 14'-0" ORNAMENTAL TYPE ALUMINUM POLE (REFER TO LIGHT STANDARD DETAIL FOR MODEL INFORMATION)
 - 2 PROPOSED 175W METAL HALIDE DECORATIVE TYPE LUMINAIRE ON A 14'-0" ORNAMENTAL TYPE ALUMINUM POLE MOUNTED ON A 2'-6" RAISED CONCRETE FOUNDATION (REFER TO LIGHT STANDARD DETAIL FOR MODEL INFORMATION)
 - EXISTING COM ED LIGHT POLE (REFER TO PLANS)
 - 4-1/4" #8 AND 1/4" #8 GROUND XLP-TYPE USE IN 1/2" UNIT DUCT BORED & PULLED (OR AS SHOWN ON PLANS)
 - PROPOSED 2 1/2" OR 4" RGS CONDUIT SLEEVE FOR UNIT DUCT UNDER PAVEMENT
 - PROPOSED ELECTRICAL SERVICE CABLES
 - PROPOSED LIGHTING CONTROLLER
 - PROPOSED CONCRETE HANDHOLE
 - PROPOSED COM ED SERVICE DROP LOCATION
 - POLE NUMBER
 - CIRCUIT IDENTIFIER
 - OFFSET (FROM C OF CONSTRUCTION, TYP.)
 - STATION
 - RIGID GALVANIZED STEEL CONDUIT
 - TRENCHED OR PUSHED
- NOTES:**
- SPLICING IS ONLY ALLOWED IN LIGHT POLE HANDHOLES.
 - EXISTING COM ED POLE WITH LUMINAIRE MOUNTED ON MAST ARM SHALL HAVE LUMINAIRE AND MAST ARM REMOVED BY COM ED AFTER THE PROPOSED LIGHT STANDARDS ARE PUT INTO OPERATION.

REFER TO ROADWAY IMPROVEMENT PLANS FOR SIDEWALK REMOVE & REPLACE. ELECTRICAL CONTRACTOR TO COORDINATE THIS WORK WITH GENERAL CONTRACTOR.