

F.A.P. ROUTE NO.	SECTION	COUNTY	TOTAL SHEETS	SHEET NO.
161B	05-00028-00-SW	COOK	8	5
STA. 20+50 TO STA. 26+65				
FED. ROAD DIST. NO. C-91-039-06		ILLINOIS	FED AID PROJECT M-8003 (533)	

CONTRACT NO.: B3921

CATCH BASIN

ST-CB 1
CATCH BASIN, TY C, W TYPE 8 GRATE
2' DIA.
STA. 23+14, 55' RT.
RIM = 97.71+/-
INV = 94.63 12" NW
INV = 95.21 12" E

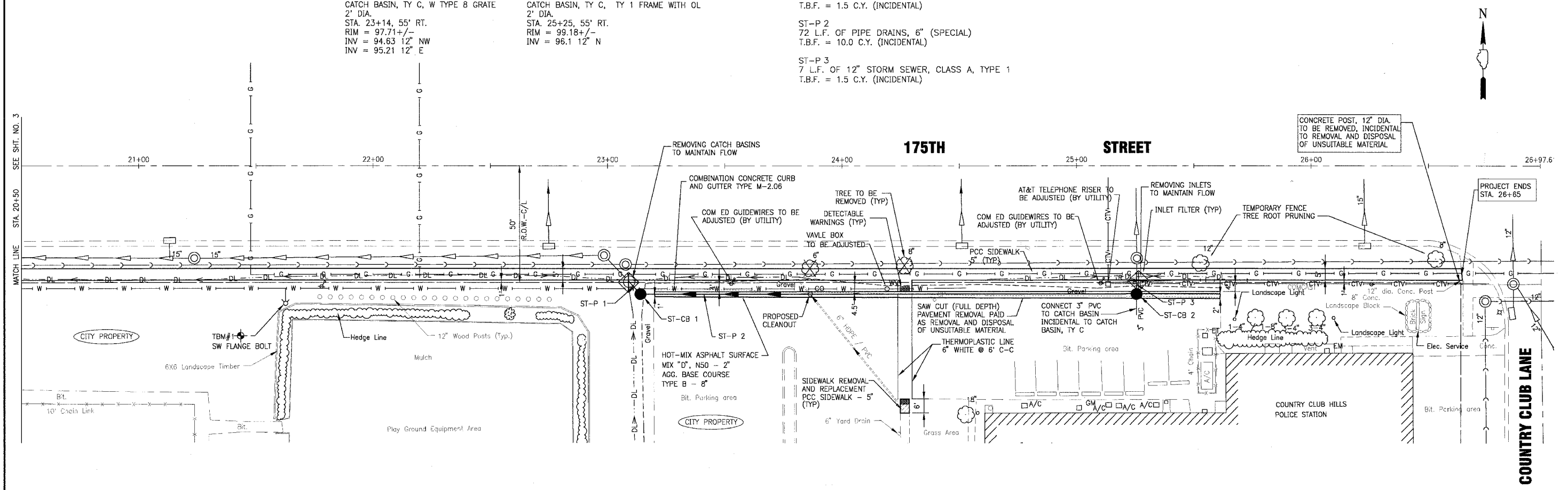
ST-CB 2
CATCH BASIN, TY C, TY 1 FRAME WITH OL
2' DIA.
STA. 25+25, 55' RT.
RIM = 99.18+/-
INV = 96.1 12" N

STORM SEWER PIPES

ST-P 1
7 L.F. OF 12" STORM SEWER, CLASS A, TYPE 1
T.B.F. = 1.5 C.Y. (INCIDENTAL)

ST-P 2
72 L.F. OF PIPE DRAINS, 6" (SPECIAL)
T.B.F. = 10.0 C.Y. (INCIDENTAL)

ST-P 3
7 L.F. OF 12" STORM SEWER, CLASS A, TYPE 1
T.B.F. = 1.5 C.Y. (INCIDENTAL)



I:\CCHLIC\050073\40-Design\DWGS\050073apln.DWG
 Plotted: 3-06-07 @ 2:55pm By: 366bnd
 Copyright © 2005, By: Baxter & Woodman, Inc.
 State of Illinois - Professional Design Firm
 License No. - 134-001121 - Expires: 4-30-07

CONSULTANTS	REV. NO.	DATE	DESCRIPTION
	1	2-20-07	PER IDOT COMMENTS
	2	3-2-07	PER IDOT COMMENTS

* - REFER TO EQUIPMENT MANUFACTURER'S SHOP DRAWINGS

BAXTER & WOODMAN
Consulting Engineers

Baxter & Woodman
Crystal Lake, Illinois 815.459.1200
Burlington, Wisconsin 262.763.7834
Mokena, Illinois 708.478.2090
DeKalb, Illinois 815.797.3111
Crestlake, Illinois 847.223.5068
Rockford, Illinois 815.459.1551
Plainfield, Illinois 815.699.7425

CITY OF COUNTRY CLUB HILLS, ILLINOIS
175th STREET SIDEWALK

175TH STREET
STA. 20+50 TO STA. 26+65
PLAN

NOT FOR BIDDING

DESIGNED BY	TMS	SCALE	HORIZ: 1"=20'
DRAWN BY	LUK	PROJECT NO.	050073.40
CHECKED BY	NJP	SHEET NO.	5 OF 8
NJP	DATE	12-20-06	