

FAS RTE	SECTION	COUNTY	TOTAL SHEETS	SHEET NO.
238	01-00130-00-BR	HENRY	14	1
F.H.W.A. REG.		ILLINOIS PROJECT		

STATE OF ILLINOIS
DEPARTMENT OF TRANSPORTATION

PLANS FOR
PROPOSED LOCAL AGENCY IMPROVEMENT
FEDERAL AID BRRP PROJECT
HENRY COUNTY

HENRY COUNTY SECTION 01-00130-00-BR
PROJECT BRS-238(104) JOB C-92-102-01
FAS RTE 238 CONTRACT 85411

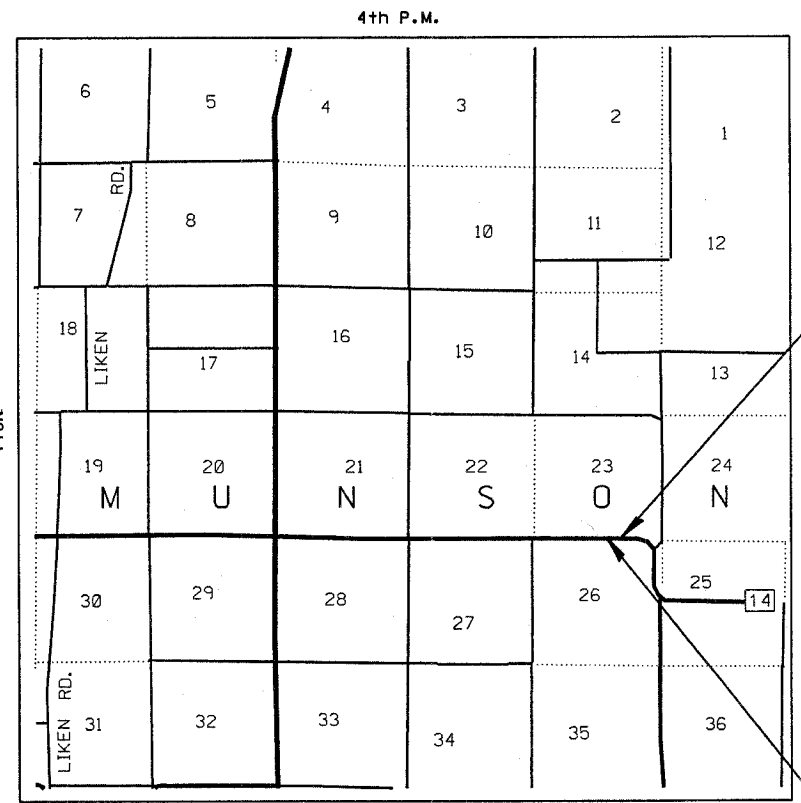
INDEX OF SHEETS

- Sheet No. 1 Cover Sheet
- Sheet No. 2 Plan & Profile
- Sheet No. 3 Cross Sections
- Sheet No. 4 Cross Sections
- Sheet No. 5 General Plan & Elevation
- Sheet No. 6 P.P.C. Deck Beam Superstructure
- Sheet No. 7 P.P.C. Deck Beam Superstructure
- Sheet No. 8 P.P.C. Deck Beam Details
- Sheet No. 9 P.P.C. Deck Beam Bent Abutment
- Sheet No. 10 P.P.C. Deck Beam Pile Bent Pier
- Sheet No. 11 Type S-1 Railing
- Sheet No. 12 Name Plate
- Sheet No. 13 Pile Details
- Sheet No. 14 Boring Details

TRAFFIC CONTROL STANDARDS
702001-06 280001-03 72011
728001 729001 BLR 21-6

CONSTRUCTION TYPE CODE X080-2A
SCHEDULE OF QUANTITIES

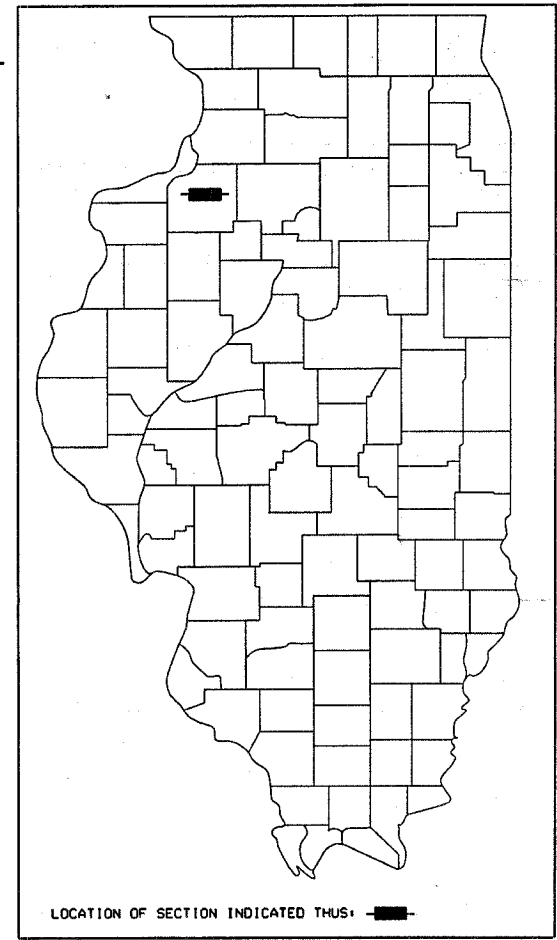
CODE	QUANTITY	UNIT	DESCRIPTION
20200100	367	Cu.Yds.	Earth Excavation
20300100	1310	Cu.Yds.	Channel Excavation
25000330	0.97	Acre	Seeding, Class 6
25000400	88	Pound	Nitrogen Fertilizer Nutrient
25000500	88	Pound	Phosphorous Fertilizer Nutrient
25000600	88	Pound	Potassium Fertilizer Nutrient
25100115	1.94	Acre	Mulch, Method 2
28000300	4	Each	Temporary Ditch Checks
28100707	280	Sq.Yds.	Stone Dumped Riprap, Class A4
35101400	925	Ton	Aggregate Base Course, Type B
50100100	1	Each	Removal of Existing Structures
50200100	142	Cu.Yds.	Structure Excavation
50300225	36.6	Cu.Yds.	Concrete Structures
50400405	2940	Sq.Ft.	P P Conc Dk Bm 21 Dp
50800105	3800	Pound	Reinforcement Bars
50900205	210	Foot	Steel Railing, Type S1
51201400	1359	Foot	Fur. Stl. Pile HP 10X42
51202305	1359	Foot	Driving Piles
51203400	2	Each	Test Pile Stl HP 10X42
51204650	20	Each	Pile Shoes
51500100	1	Each	Name Plate
54200220	80	Foot	P Cul CL D 1 15"
58100200	326.6	Sq.Yds.	WaterPrf Membrane System
58300100	630	Foot	PC Mortar Fairing CSE
63100075	2	Each	Traffic Barrier Terminal Type 5A
67100100	1	L. Sum	Mobilization
LR631020	2	Each	Traffic Barrier Terminal Type 1
XX005685	19.2	Cu.Yds.	Class S1 Concrete Encasement



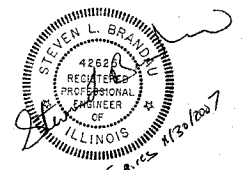
Section 01-00130-00-BR Ends at Station 105+50.

Section includes a three span bridge (30'.45'.30') with precast prestressed concrete deck beams (21" deep) on pile bent concrete abutments, skewed 10° left ahead. Also included are aggregate surface approach roadways.

SECTION 01-00130-00-BR Begins at Station 99+50.



LOCATION OF SECTION INDICATED THUS: [black rectangle]



THESE PLANS WERE PREPARED BY ME OR BY THE FULL TIME MEMBERS OF MY STAFF.

Steven L. Brandau
STEVEN L. BRANDAU
P.E. 42625

STATE OF ILLINOIS
DEPARTMENT OF TRANSPORTATION
DIVISION OF HIGHWAYS

APPROVED March 27 2007 *Steven L. Brandau*
HENRY COUNTY ENGINEER

PASSED April 11 2007 *James J. Wilson*
DISTRICT #2 ENGINEER OF LOCAL ROADS & STREETS

RELEASING FOR BID
BASED ON LIMITED
REVIEW April 11 2007 *George T. Hanson*
DEPUTY DIRECTOR OF HIGHWAYS REGION #2 ENGINEER

LOCATION MAP

NET LENGTH OF SECTION = 600 FEET = 0.114 MILES

CALL J.U.L.I.E.
BEFORE YOU DIG
800-892-0123

Major Collector (Less Than 400)