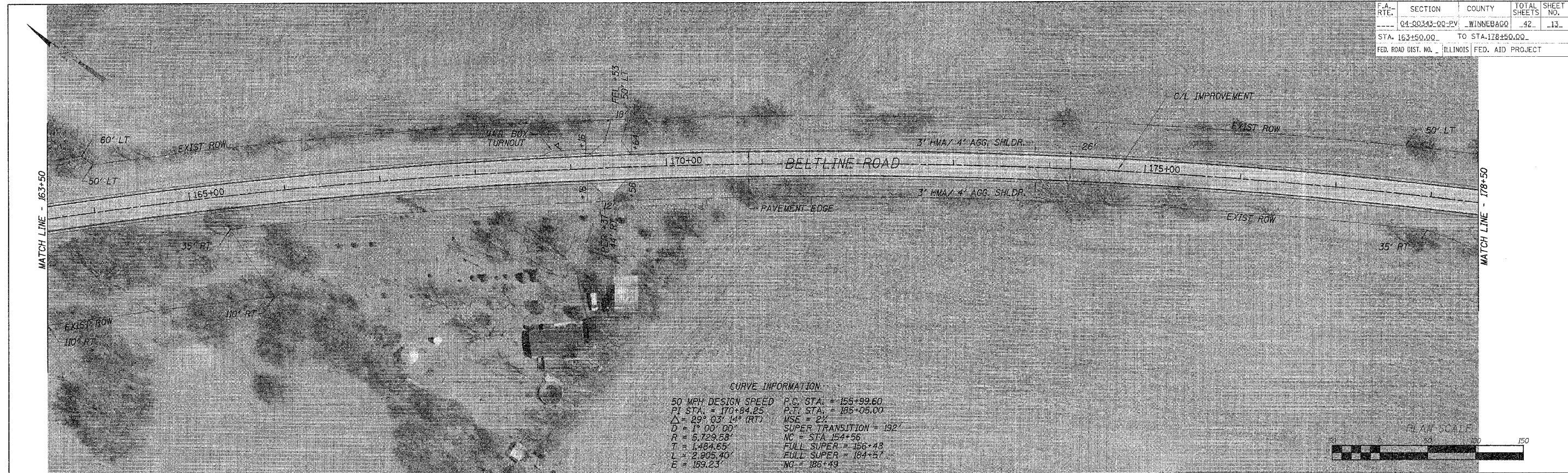
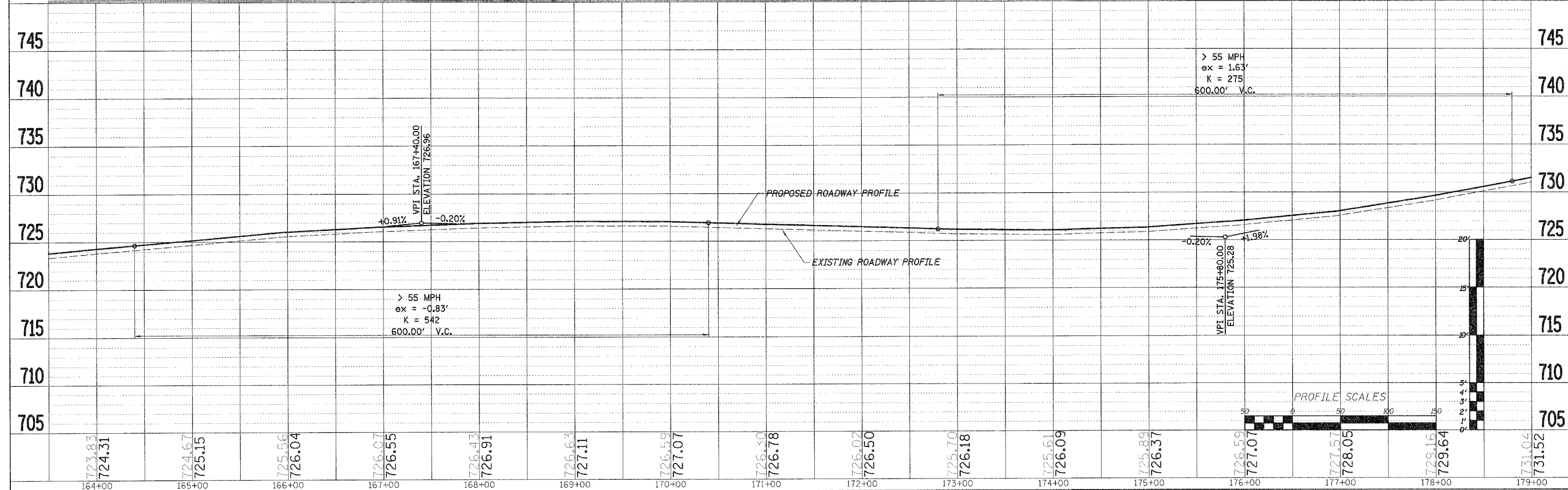


F.A. RTE.	SECTION	COUNTY	TOTAL SHEETS	SHEET NO.
04-00343-00-PV	WINNEBAGO	42	13	
STA. 163+50.00 TO STA. 178+50.00				
FED. ROAD DIST. NO. ILLINOIS FED. AID PROJECT				



**CURVE INFORMATION**

50 MPH DESIGN SPEED	P.C. STA. = 155+99.60
P.T. STA. = 170+84.25	P.T. STA. = 185+05.00
$\Delta = 29^{\circ} 03' 14''$ (RT)	WSE = 2%
D = 1' 00' 00"	SUPER TRANSITION = 192'
R = 5,729.53'	NC = STA 154+56'
T = 1,484.65'	FULL SUPER = 186+48'
L = 2,905.40'	FULL SUPER = 184+57'
E = 189.23'	NG = 186+49'



S:TRANS.1216D06-BELTLINERDWAY.DESIGN.PP50BELTLINE19.DGN