

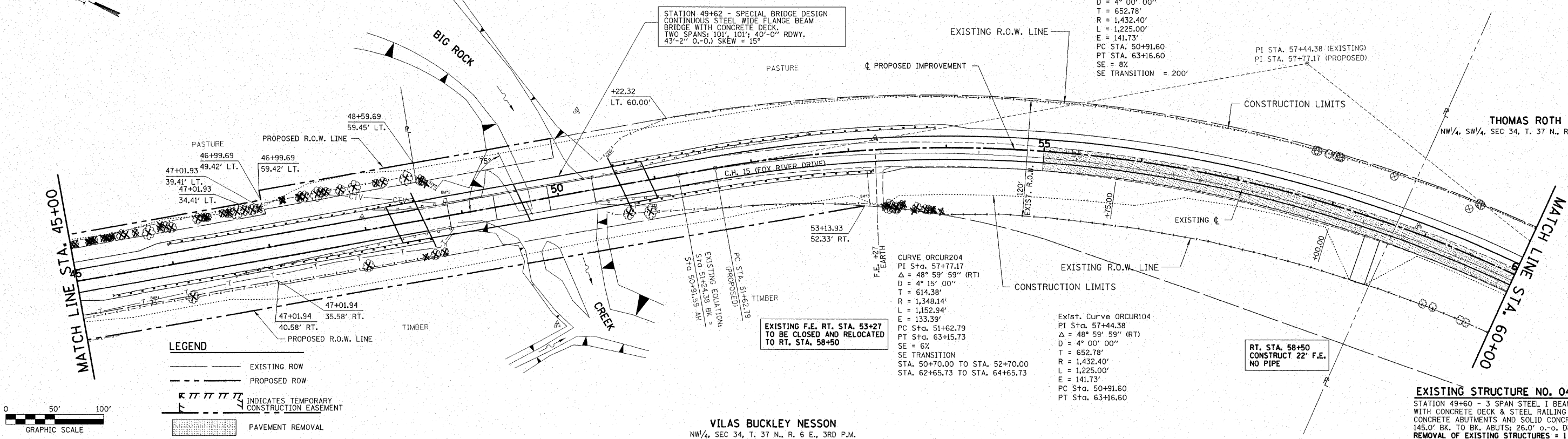
C.H.	SECTION	COUNTY	TOTAL SHEETS	SHEET NO.
15	96-00044-00-BR	KENDALL	55	10
STA. 45+00.00		TO STA. 60+00.00		
FED. ROAD DIST. NO.		ILLINOIS CONTRACT NO. 87325		

WILLIAM WARREN NESSON
NESSON TRUSTEES
NW/4, SEC 34, T. 37 N., R. 6 E., 3RD P.M.



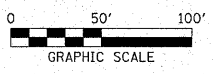
DATE	BY

PLAN	SURVEYED	PLOTTED	CHECKED	DATE



LEGEND

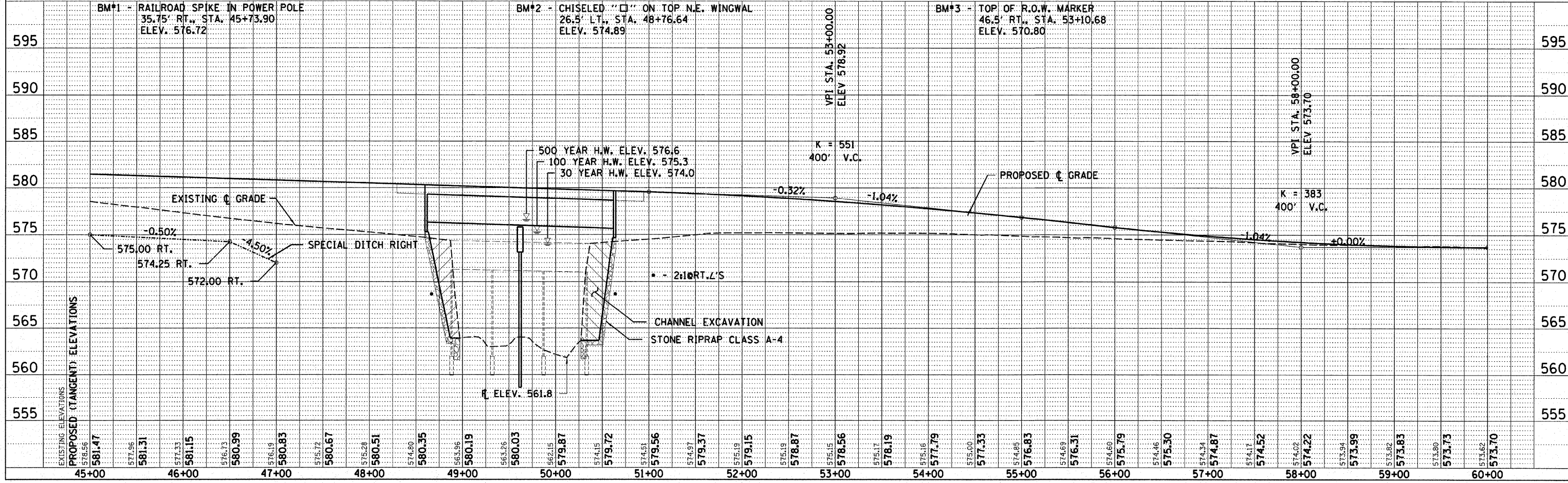
- EXISTING R.O.W.
- - - PROPOSED R.O.W.
- ||||| INDICATES TEMPORARY CONSTRUCTION EASEMENT
- ▨ PAVEMENT REMOVAL



VILAS BUCKLEY NESSON
NW/4, SEC 34, T. 37 N., R. 6 E., 3RD P.M.

DATE	BY

PROFILE	SURVEYED	PLOTTED	CHECKED	DATE



BM#1 - RAILROAD SPIKE IN POWER POLE
35.75' RT., STA. 45+73.90
ELEV. 576.72

BM#2 - CHISELED "□" ON TOP N.E. WINGWAL
26.5' LT., STA. 48+76.64
ELEV. 574.89

BM#3 - TOP OF R.O.W. MARKER
46.5' RT., STA. 53+10.68
ELEV. 570.80

EXISTING STRUCTURE NO. 047-3001
STATION 49+60 - 3 SPAN STEEL I BEAM BRIDGE
WITH CONCRETE DECK & STEEL RAILING ON CLOSED
CONCRETE ABUTMENTS AND SOLID CONCRETE PIERS.
145.0' BK. TO BK. ABUTS 26.0' o.-o. DECK.
REMOVAL OF EXISTING STRUCTURES = 1 EACH