

C.H.	SECTION	COUNTY	TOTAL SHEETS	SHEET NO.
15	96-00044-00-BR	KENDALL	55	11
STA. 45+00.00		TO STA. 60+00.00		
FED. ROAD DIST. NO.		ILLINOIS	CONTRACT NO. 87325	

THOMAS ROTH JR.  
NW 1/4, SW 1/4, SEC 34, T. 37 N., R. 6 E., 3RD P.M.

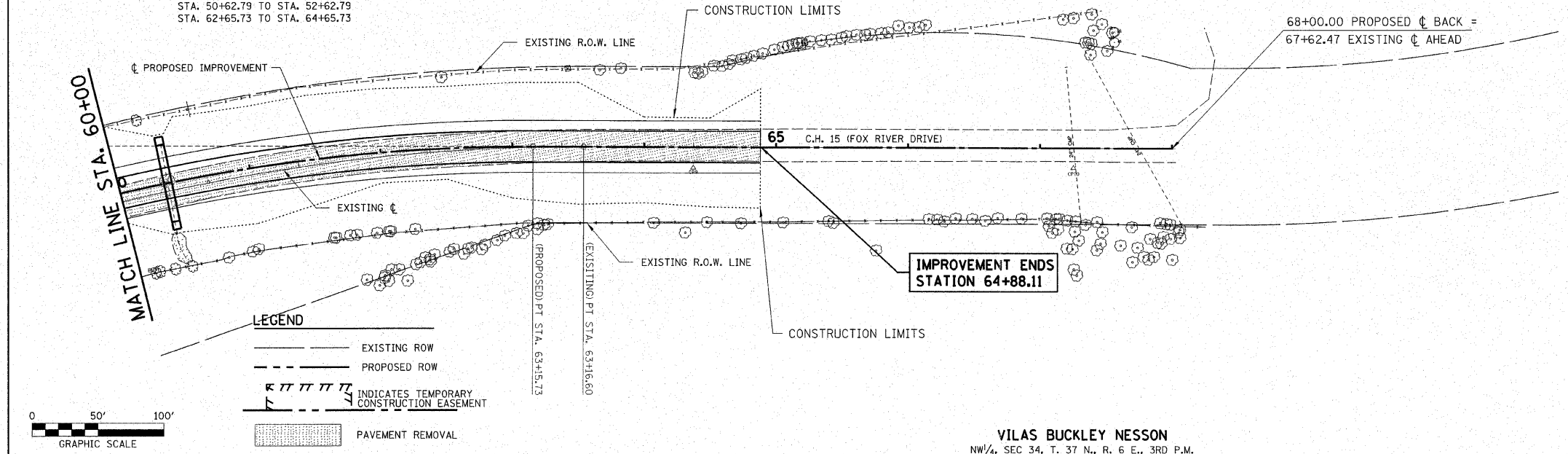
CURVE ORCUR204  
PI STA. 57+77.17  
 $\Delta = 48^\circ 59' 59''$  (RT)  
D = 4° 15' 00"  
T = 614.38'  
R = 1,348.14'  
L = 1,152.94'  
E = 133.39'  
PC STA. 51+62.79  
PT STA. 63+15.73  
SE = 6%  
SE TRANSITION  
STA. 50+62.79 TO STA. 52+62.79  
STA. 62+65.73 TO STA. 64+65.73

EXISTING CURVE ORCUR104  
PI STA. 57+44.38  
 $\Delta = 48^\circ 59' 59''$  (RT)  
D = 4° 00' 00"  
T = 652.78'  
R = 1,432.40'  
L = 1,225.00'  
E = 141.73'  
PC STA. 50+91.60  
PT STA. 63+16.60  
SE = 8%  
SE TRANSITION = 200'

A.R. STA. 60+36.90  
EXIST. 48" CMP  
USFL 566.51 @ 35.71 LT  
DSFL 564.21 @ 32.50 LT.  
PRECAST CONCRETE BOX CULVERT  
6'x6' (M273) = 60 FOOT  
BOX CULVERT END SECTIONS  
CULVERT, NO. 1 = 2 EACH  
USFL 566.0 @ 36 LT.  
DSFL 564.0 @ 36 RT.  
PIPE CULVERT REMOVAL 48" CMP = 68 FOOT

DATE	BY

DATE	BY



VILAS BUCKLEY NESSON  
NW 1/4, SEC 34, T. 37 N., R. 6 E., 3RD P.M.

