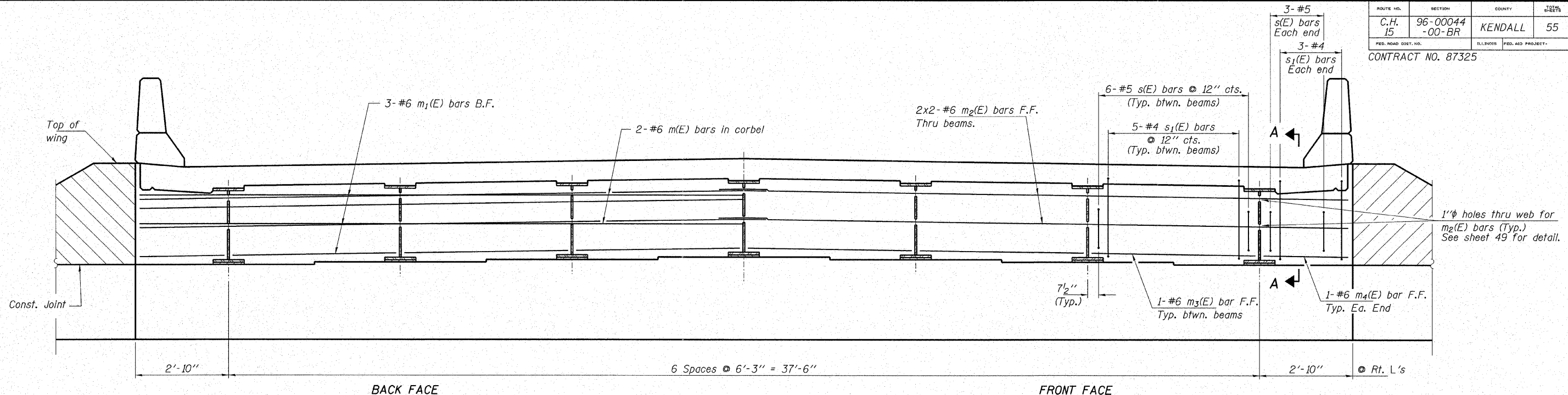


ROUTE NO.	SECTION	COUNTY	TOTAL SHEETS	SHEET NO.
C.H. 15	96-00044-00-BR	KENDALL	55	46
FED. ROAD DIST. NO.		ILLINOIS	FED. AID PROJECT	

CONTRACT NO. 87325

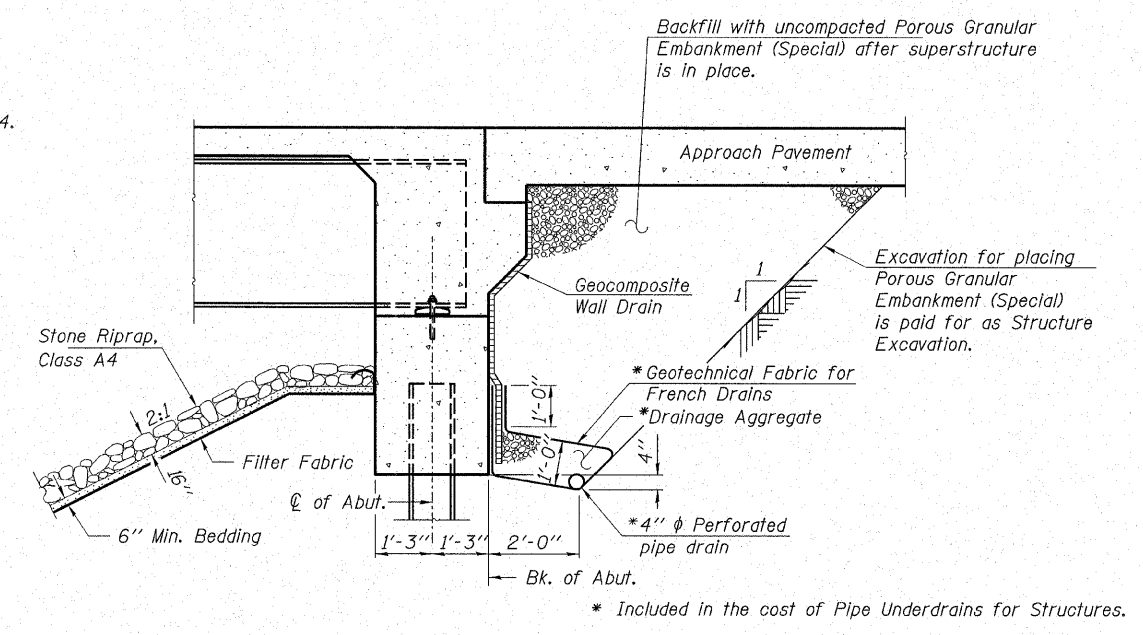


**DIAPHRAGM AT ABUTMENTS**

South Abut. (Looking South)  
 North Abut. (Looking North)  
 F.F. - Front Face  
 B.F. - Back Face

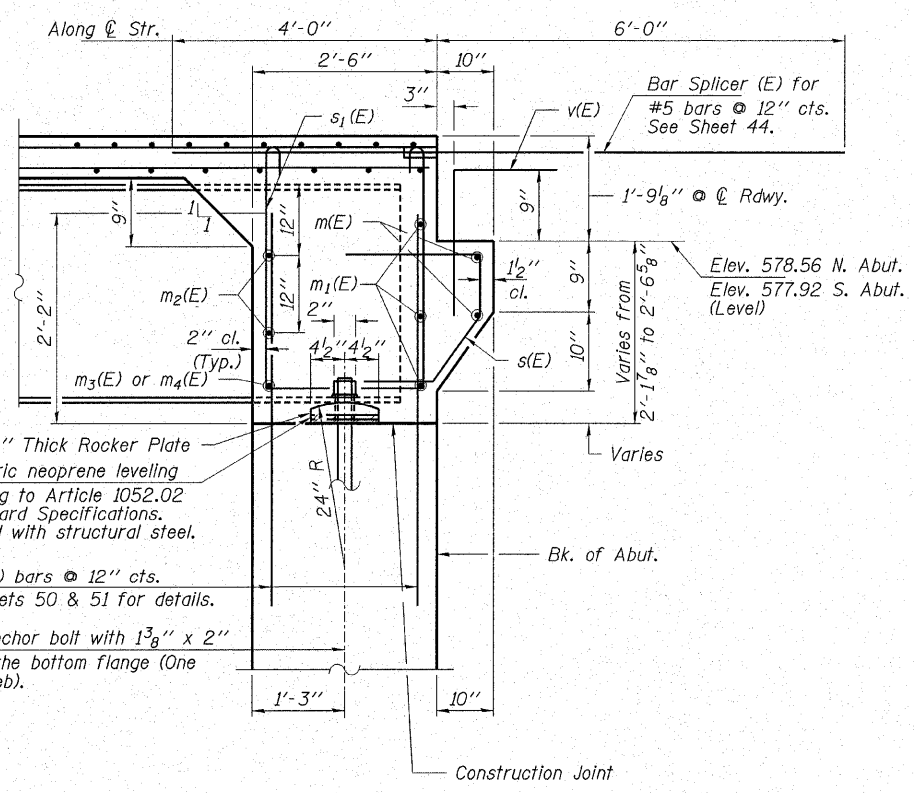
Notes:  
 Reinforcement bars in diaphragms are billed with superstructure on sheet 44. Concrete in diaphragms is included with "Concrete Superstructure" on sheet 44. Reinforcement bars designated (E) shall be epoxy coated. The  $s(E)$  and  $s_1(E)$  bars shall be placed parallel to the beams. Spacing for these bars shall be at right angles to the beams.

**MIN. BAR LAPS**  
 #6 bars = 2'-7"

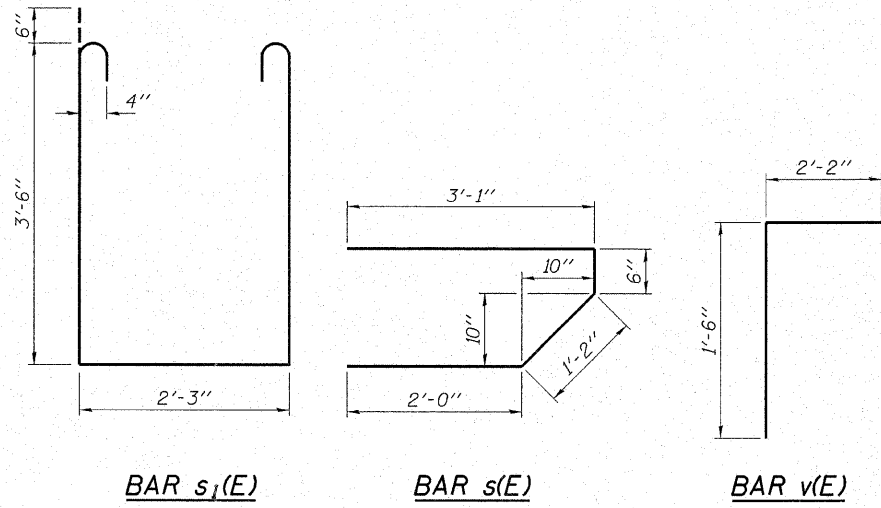


**SECTION THRU INTEGRAL ABUTMENT**  
 (Horiz. dim. @ Rt. L's)

Note:  
 All drainage system components shall extend to 2'-0" from the end of each wingwall except an outlet pipe shall extend until intersecting with the side slopes. The pipes shall drain into concrete headwalls. (See Article 601.05 of the Standard Specifications and Highway Standard 60110D.)



**SECTION A-A**  
 (Dimensions @ Rt. L's except as noted.)



**HAMPTON, LENZINI & RENWICK, INC.**  
 CIVIL & STRUCTURAL ENGINEERS

3085 STEVENSON DRIVE, SUITE 201  
 SPRINGFIELD, ILLINOIS 62703  
 (217) 546-3400

ELGIN • SPRINGFIELD

PROJECT NUMBER: 12-06-0030-1 DATE: 03/12/07  
 DESIGNED: S.W.M. CHECKED: M.G.B. DRAWN: D.B.

**SUPERSTRUCTURE DETAILS**

SECTION 96-00044-00-BR

FOX RIVER DRIVE / C.H. 15

KENDALL COUNTY

STRUCTURE NO. 047-3150 / STATION 49+62