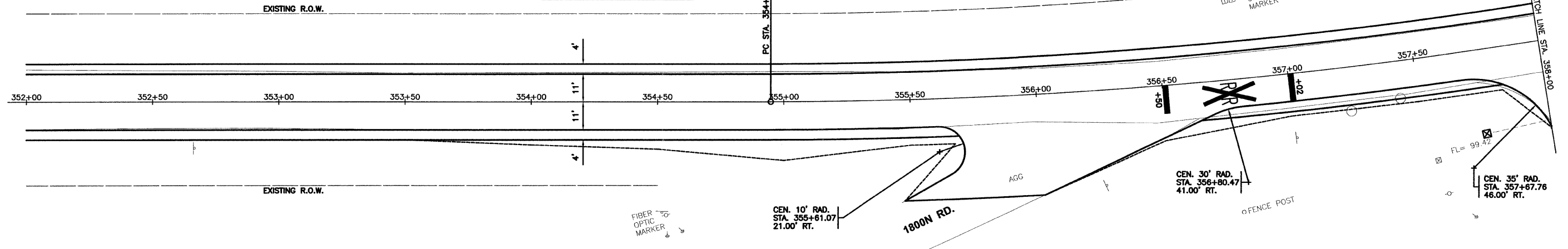
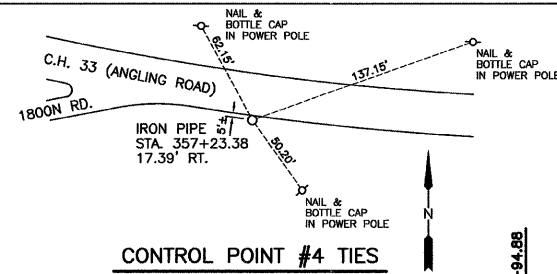
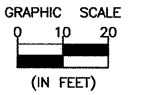


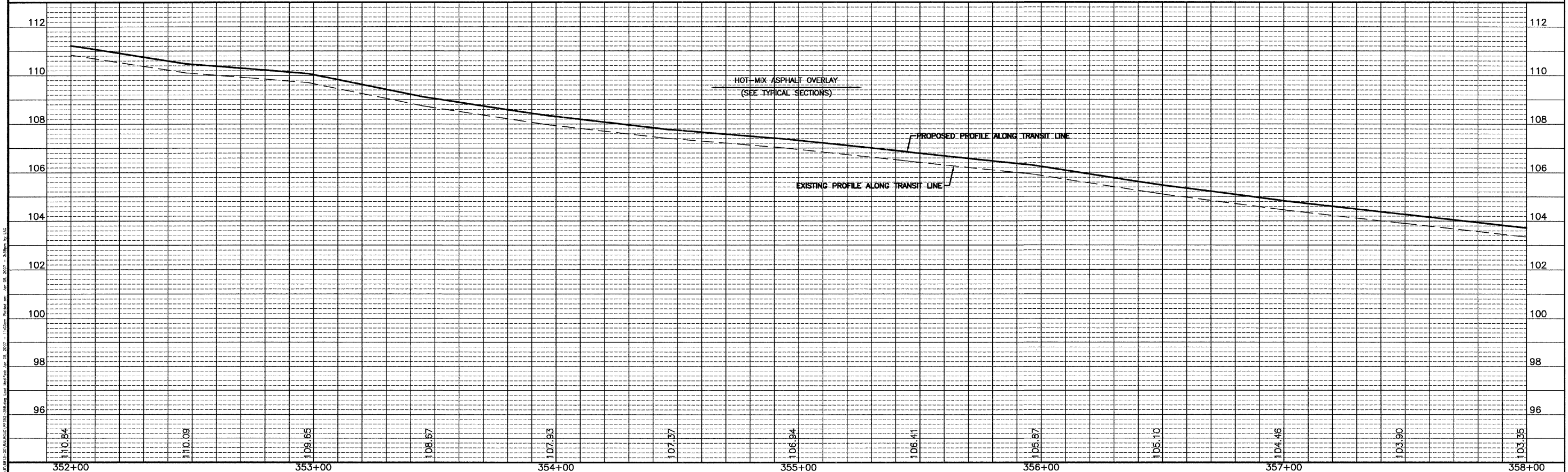
$\Delta = 15^{\circ}06'53''$
 $R = 1910.10'$
 $T = 253.42'$
 $L = 503.89'$
 $PC STA = 354+94.88$
 $PI STA = 357+48.30$
 $PT STA = 359+98.77$ (BK) = 359+99.80 (AH)



BENCHMARK "A":
 RAILROAD SPIKE IN POWER POLE
 AT N.E. CORNER OF 3100E ROAD
 AND 1800N ROAD (C.H. 33)
 ELEV. = 100.00

LEGEND

- CONSTRUCTION LIMITS
- ☒ INLET & PIPE PROTECTION



DRAWN BY: L.A.G.	CAD/.DWG: PP352-358
CHECKED BY: D.J.D.	DATE: 04/07

REVISIONS	
DATE	BY



PERU MORRIS
ILLINOIS

C.H. 33 (ANGLING ROAD)
 2007
 SECTION 05-00198-00-RS

PLAN AND PROFILE STA. 352+00 TO STA. 358+00

SCALE: AS NOTED	SHEET 15
FILE NO.: 6813.00Y-1	OF 33