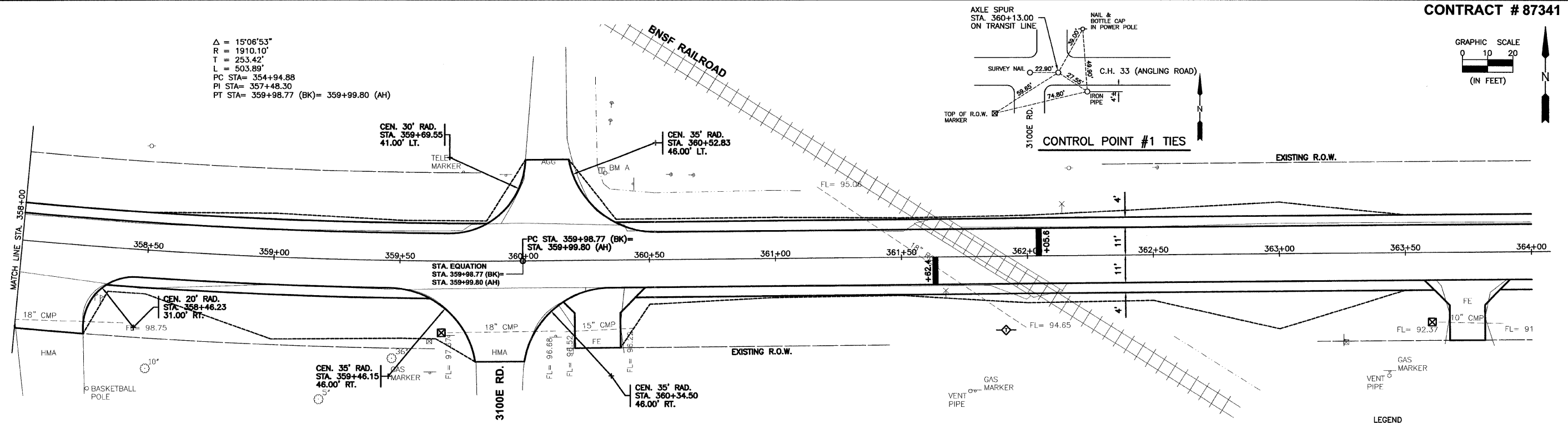


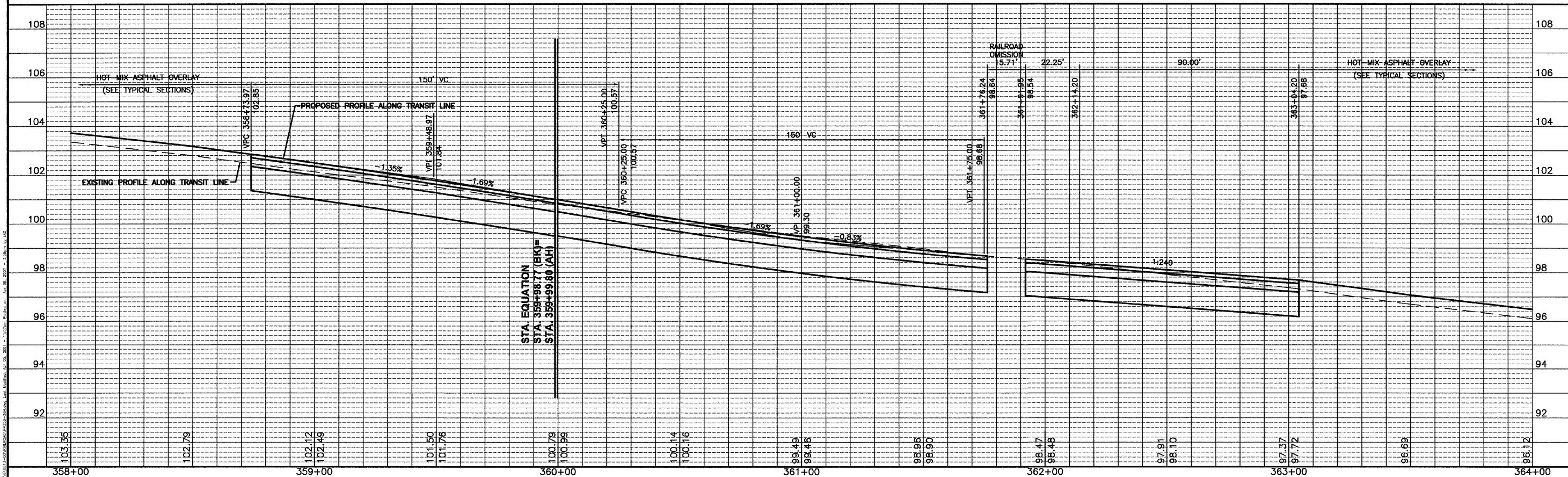
Δ = 15°06'53"
 R = 1910.10'
 T = 253.42'
 L = 503.89'
 PC STA = 354+94.88
 PI STA = 357+48.30
 PT STA = 359+98.77 (BK) = 359+99.80 (AH)



BENCHMARK "A":
 RAILROAD SPIKE IN POWER POLE
 AT N.E. CORNER OF 3100E ROAD
 AND 1800N ROAD (C.H. 33)
 ELEV. = 100.00

NOTES:
 ROTATE EDGES OF PAVEMENT TO
 MATCH RAILROAD CROSSING
 STA. 361+25 TO STA. 361+60.
 ROTATE EDGES OF PAVEMENT TO
 MATCH RAILROAD CROSSING
 STA. 362+20 TO STA. 362+55.

- LEGEND
- CONSTRUCTION LIMITS
 - ☒ -INLET & PIPE PROTECTION
 - ◇ -TEMPORARY DITCH CHECK



DRAWN BY: L.A.G.	CAD./DWG: PP358-364	REVISIONS	CHAMBLIN & ASSOCIATES	PERU MORRIS ILLINOIS	C.H. 33 (ANGLING ROAD) 2007 SECTION 05-00198-00-RS	PLAN AND PROFILE STA. 358+00 TO STA. 364+00	SCALE: AS NOTED	SHEET 16
CHECKED BY: D.J.D.	DATE: 04/07	DATE BY					FILE NO.: 6813.00Y-1	OF 33