

ROUTE NO.	SECTION	COUNTY	TOTAL SHEETS	SHEET NO.
FAS 389	93-00049-00-BR	PEORIA	99	38
FED. ROAD DIST. NO.	7	ILLINOIS	PROJECT:	BRS-0389(104)
CONTRACT NO. 89323				

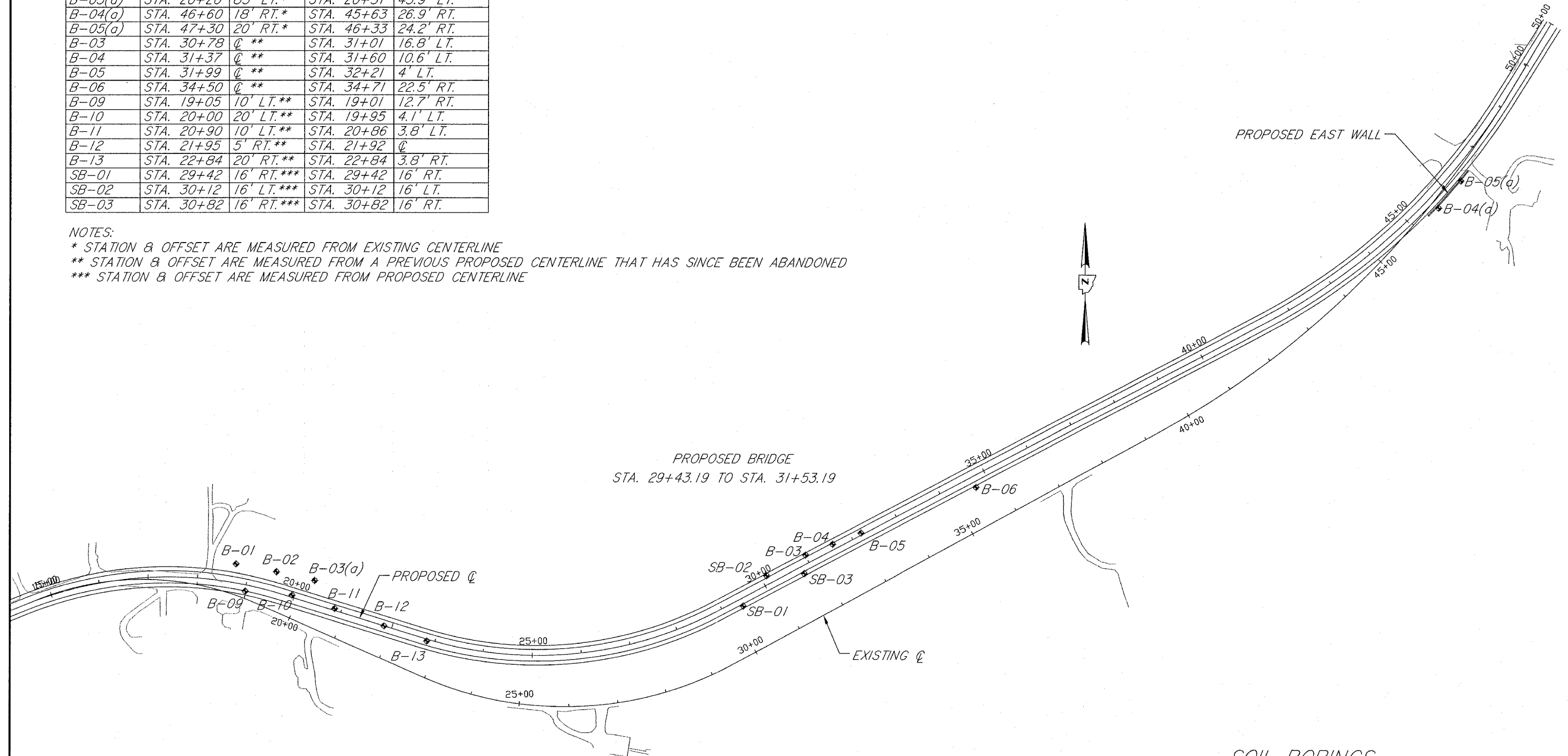
SHEET 1 OF 13

BORING LOCATIONS

BORING ID	AS LISTED		MEASURED FROM PROPOSED	
	LOCATION	OFFSET	LOCATION	OFFSET
B-01	STA. 18+65	60' LT.*	STA. 18+73	37.1' LT.
B-02	STA. 19+40	75' LT.*	STA. 19+52	39.8' LT.
B-03(a)	STA. 20+20	85' LT.*	STA. 20+31	45.9' LT.
B-04(a)	STA. 46+60	18' RT.*	STA. 45+63	26.9' RT.
B-05(a)	STA. 47+30	20' RT.*	STA. 46+33	24.2' RT.
B-03	STA. 30+78	Q **	STA. 31+01	16.8' LT.
B-04	STA. 31+37	Q **	STA. 31+60	10.6' LT.
B-05	STA. 31+99	Q **	STA. 32+21	4' LT.
B-06	STA. 34+50	Q **	STA. 34+71	22.5' RT.
B-09	STA. 19+05	10' LT.**	STA. 19+01	12.7' RT.
B-10	STA. 20+00	20' LT.**	STA. 19+95	4.1' LT.
B-11	STA. 20+90	10' LT.**	STA. 20+86	3.8' LT.
B-12	STA. 21+95	5' RT.**	STA. 21+92	Q
B-13	STA. 22+84	20' RT.**	STA. 22+84	3.8' RT.
SB-01	STA. 29+42	16' RT.***	STA. 29+42	16' RT.
SB-02	STA. 30+12	16' LT.***	STA. 30+12	16' LT.
SB-03	STA. 30+82	16' RT.***	STA. 30+82	16' RT.

NOTES:

- * STATION & OFFSET ARE MEASURED FROM EXISTING CENTERLINE
- ** STATION & OFFSET ARE MEASURED FROM A PREVIOUS PROPOSED CENTERLINE THAT HAS SINCE BEEN ABANDONED
- *** STATION & OFFSET ARE MEASURED FROM PROPOSED CENTERLINE



SOIL BORINGS
 STA. 15+00 TO STA. 50+00
 PEORIA COUNTY
 STRUCTURE NO. 072-3145