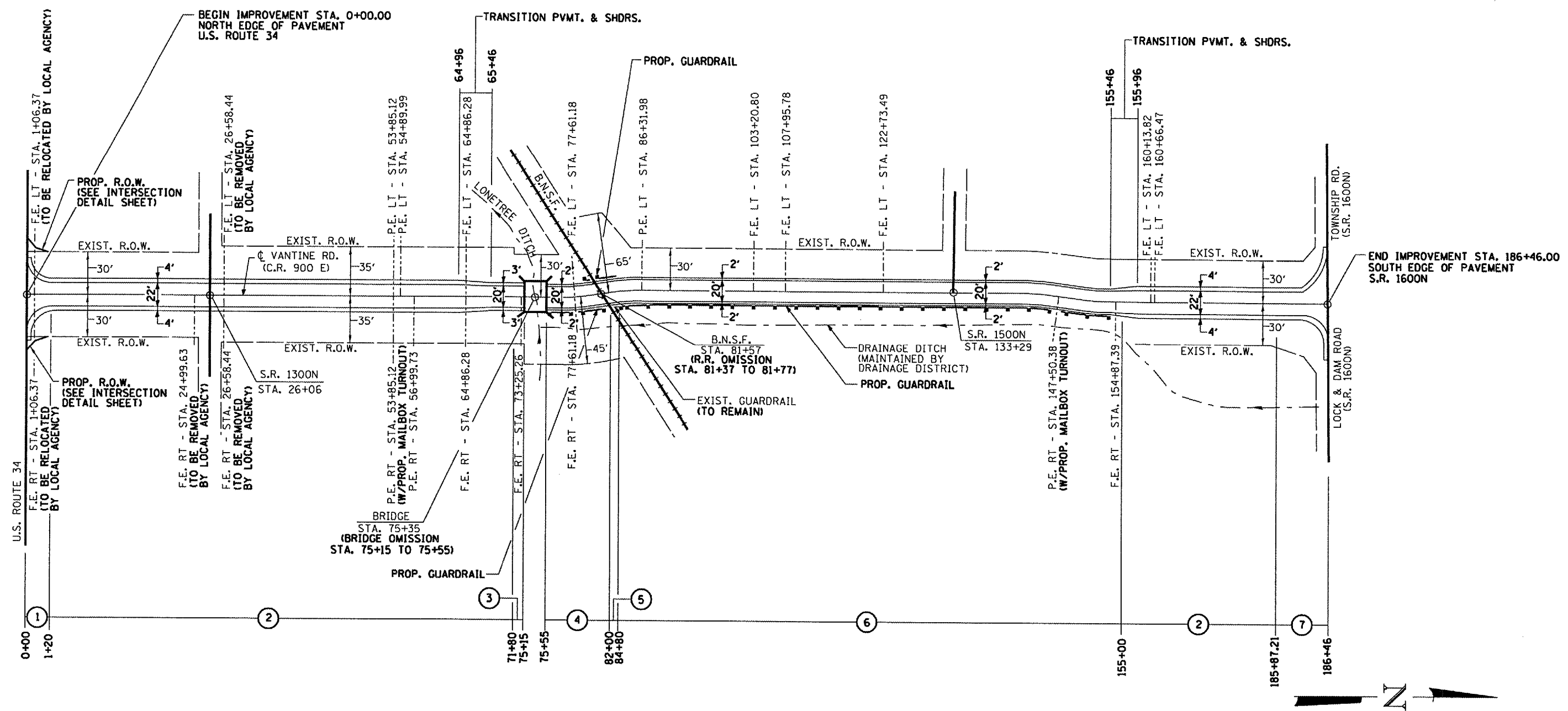


F.A.S. RTE.	SECTION	COUNTY	TOTAL SHEETS	SHEET NO.
418	04-00069-00-RS	HENDERSON	15	10
STA.	TO STA.			
FED. ROAD DIST. NO.	ILLINOIS	FED. AID PROJECT		
CONTRACT NO. 89366				



① = TYPICAL SECTION NO.

LENGTH OF OVERLAY = 18,646 FT. (3.53 MILES)

REVISIONS		NAME	DATE
NO.	DESCRIPTION		

ILLINOIS DEPARTMENT OF TRANSPORTATION
F.A.S. 418 (VANTINE ROAD)

PROJECT CENTERLINE PLAN

SCALE: N/A
DATE: 1-5-07

DRAWN BY CGF
CHECKED BY JJM