

60605000
COMBINATION CONCRETE CURB AND GUTTER, TYP. B-6.24

RT STA. 11+00 TO STA. 11+43	44.0 FOOT
LT STA. 11+00 TO STA. 11+89	88.3 FOOT
RT STA. 11+55 TO STA. 12+16	62.5 FOOT
RT STA. 12+33 TO STA. 12+44	15.2 FOOT
LT STA. 12+39 TO STA. 13+34	97.0 FOOT
RT STA. 12+68 TO STA. 15+72	305.6 FOOT
LT STA. 13+67 TO STA. 15+17	151.5 FOOT
LT STA. 15+37 TO STA. 15+58	22.0 FOOT
LT STA. 15+85 TO STA. 16+96	111.7 FOOT

SHEET TOTAL = 907.8 FOOT

42300300
PORTLAND CEMENT CONCRETE DRIVEWAY PAVEMENT, 7 INCH

RT STA. 11+49.25	10.3 SQ. YD.
LT STA. 12+13.17	33.3 SQ. YD.
RT STA. 12+25.57	12.6 SQ. YD.
RT STA. 12+55.76	17.9 SQ. YD.
LT STA. 13+49.95	22.0 SQ. YD.
LT STA. 15+27.43	12.5 SQ. YD.
LT STA. 15+70.99	17.0 SQ. YD.
RT STA. 15+81.85	15.6 SQ. YD.

SHEET TOTAL = 141.2 SQ. YD.

44000200
DRIVEWAY PAVEMENT REMOVAL

RT STA. 11+49.25	8.8 SQ. YD.
LT STA. 12+13.17	20.4 SQ. YD.
RT STA. 12+25.57	9.9 SQ. YD.
RT STA. 12+55.76	13.9 SQ. YD.
LT STA. 13+49.95	10.7 SQ. YD.
LT STA. 15+27.43	8.8 SQ. YD.
LT STA. 15+70.99	11.1 SQ. YD.
RT STA. 15+81.85	12.3 SQ. YD.

SHEET TOTAL = 95.8 SQ. YD.

60260100
INLETS TO BE ADJUSTED

17.5 LT STA. 16+00	1 EACH
17.5 RT STA. 16+00	1 EACH

SHEET TOTAL = 2 EACH

28000300
TEMPORARY DITCH CHECKS ***

17.5 LT STA. 13+00	1 EACH
17.5 RT STA. 13+00	1 EACH
17.5 LT STA. 16+00	1 EACH
17.5 RT STA. 16+00	1 EACH

SHEET TOTAL = 4 EACH

60255700
MANHOLES TO BE ADJUSTED WITH NEW TYPE 1 FRAME, CLOSED LID

7.3 LT STA. 12+98.8	1 EACH
9.9 LT STA. 13+19.5	1 EACH
8.2 LT STA. 15+99.2	1 EACH
10.0 LT STA. 16+19.8	1 EACH

SHEET TOTAL = 4 EACH

60260500
INLETS TO BE ADJUSTED WITH NEW TYPE 3 FRAME AND GRATE

17.5 LT STA. 13+00	1 EACH
17.5 RT STA. 13+00	1 EACH

SHEET TOTAL = 2 EACH

60266600
VALVE BOXES TO BE ADJUSTED

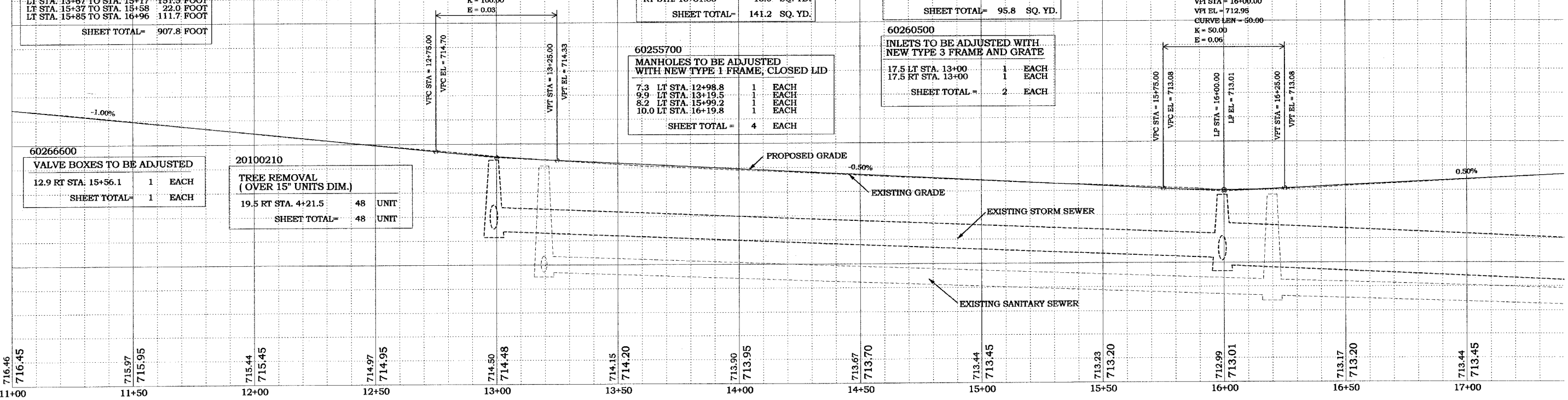
12.9 RT STA. 15+56.1	1 EACH
----------------------	--------

SHEET TOTAL = 1 EACH

20100210
TREE REMOVAL (OVER 15" UNITS DIM.)

19.5 RT STA. 4+21.5	48 UNIT
---------------------	---------

SHEET TOTAL = 48 UNIT



FRANCIS ASSOCIATES
CONSULTING ENGINEERS
LAND SURVEYORS
330 NORTH CENTRAL AVENUE
PARIS, ILLINOIS 61944
PH. (217) 465-5306
PROFESSIONAL DESIGN FIRM #184-001406

SCALES	DRAWN: TLT
PLAN: HOR. 1"=20'	DATE: 3/5/07
VERT. 1"=2'	CHECKED: _____
REVISIONS	DATE
APPROVED: _____	DATE
REVISIONS	DATE

FRANCIS ASSOC.
FILE NO.
P-356

PLAN AND PROFILE - COURT STREET

PLANS FOR PROPOSED IMPROVEMENTS TO EAST COURT STREET F.A.U. ROUTE 7562
CITY OF PARIS, ILLINOIS, EDGAR COUNTY