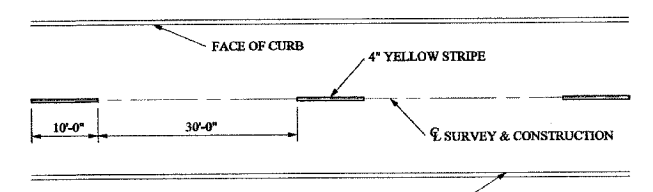
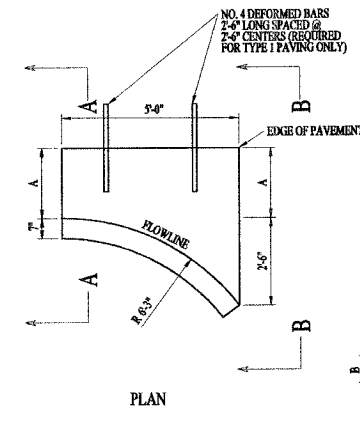


MAILBOX TURNOUT DETAIL



CENTERLINE STRIPING DETAIL

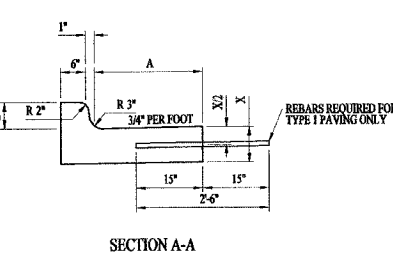


	B-6.12	B-9.12	B-6.18	B-9.18	B-6.24	B-9.24
A	12"	12"	18"	18"	24"	24"
B	6"	6"	9"	9"	6"	6"
X	9"	10"	9"	10"	8"	10"
C.Y.	0.37	0.42	0.38	0.42	0.44	0.37
CLASS SI CONC.						

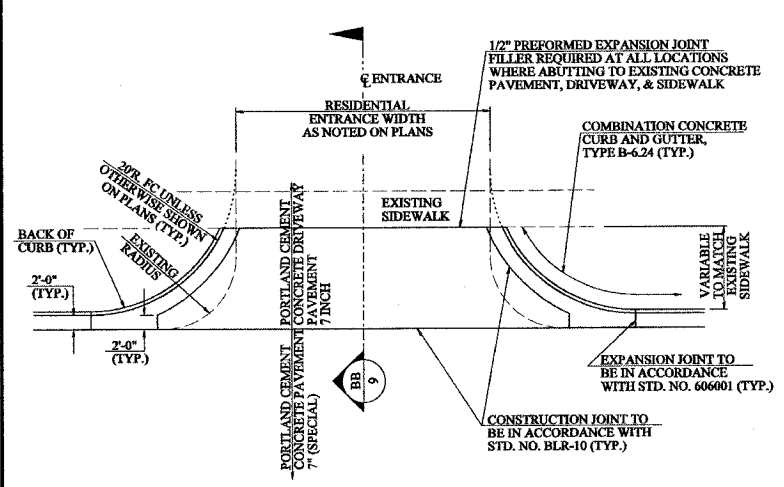
USE B-6.24 DIMENSIONS FOR CONSTRUCTION. SET X=8"

GENERAL NOTES

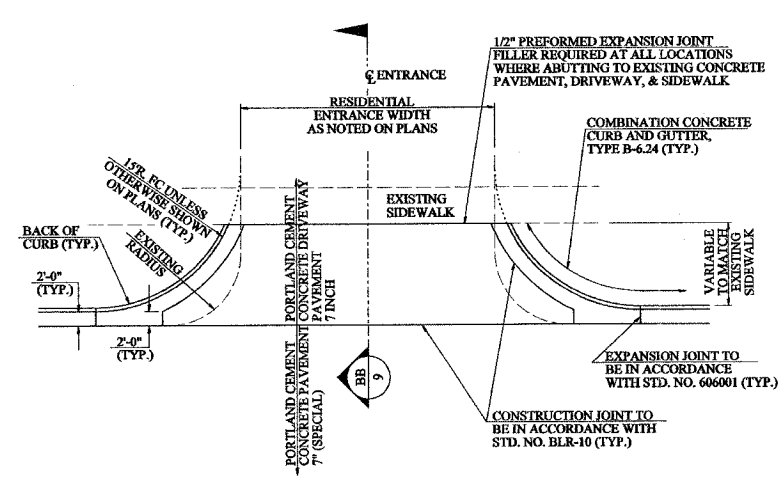
1. CLASS SI CONCRETE SHALL BE USED THROUGHOUT.
2. THE GUTTER INLET SHALL BE TIED TO THE PAVEMENT WITH NO. 4 DEFORMED BARS 2'-0" LONG SPACED @ 2'-0" CENTERS. (REQUIRED FOR TYPE I PAVING ONLY)
3. THE BARS SHOWN ABOVE WILL NOT BE PAID FOR SEPARATELY BUT SHALL BE CONSIDERED INCIDENTAL TO SPECIAL INLETS FOR COMBINATION CONCRETE CURB AND GUTTER.
4. WHEN SPECIAL INLET IS CONSTRUCTED ADJACENT TO FLEXIBLE PAVEMENT, THE TIE BARS SHALL BE OMITTED AND ALL CONSTRUCTION JOINTS SHALL BE PROVIDED WITH A DOWEL BAR CONFORMING TO ARTICLE 710.14b.
5. THIS WORK WILL BE PAID FOR AT THE CONTRACT UNIT PRICE EACH FOR SPECIAL INLETS FOR COMBINATION CONCRETE CURB AND GUTTER.



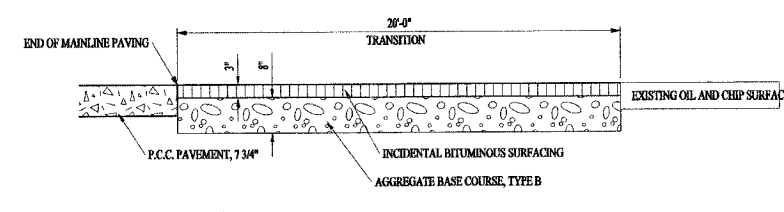
DETAIL CURB & GUTTER OUTLET, SPECIAL



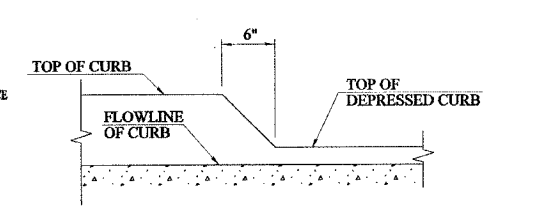
DETAIL OF COMMERCIAL ENTRANCES



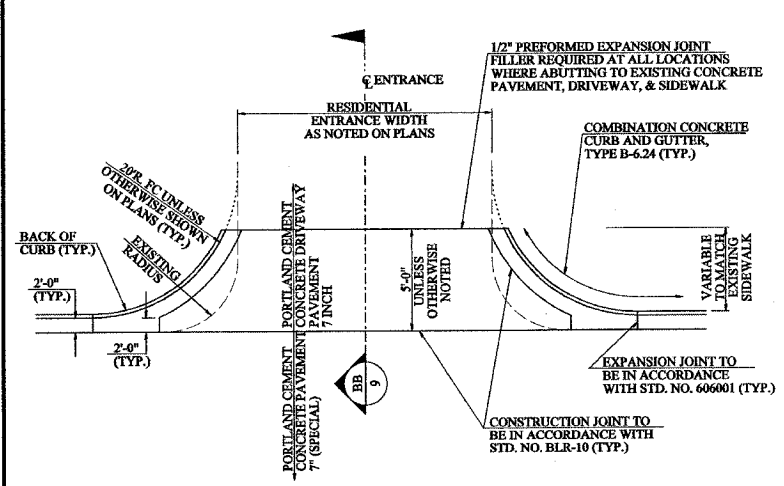
DETAIL OF RESIDENTIAL ENTRANCES



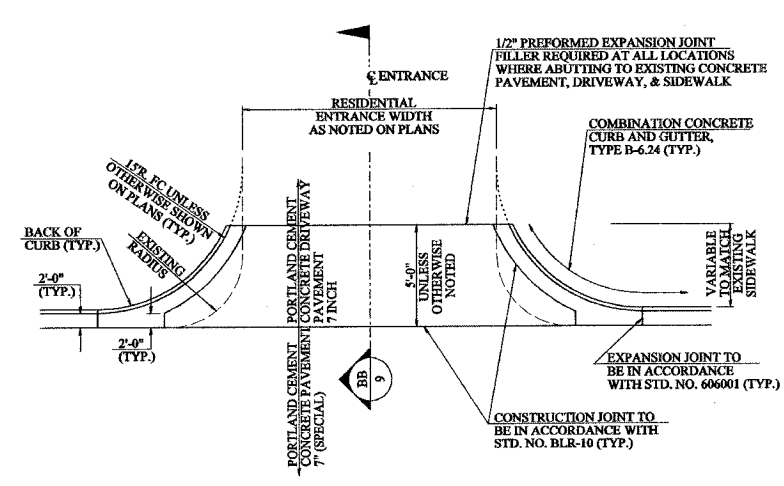
SECTION THROUGH TRANSITIONS



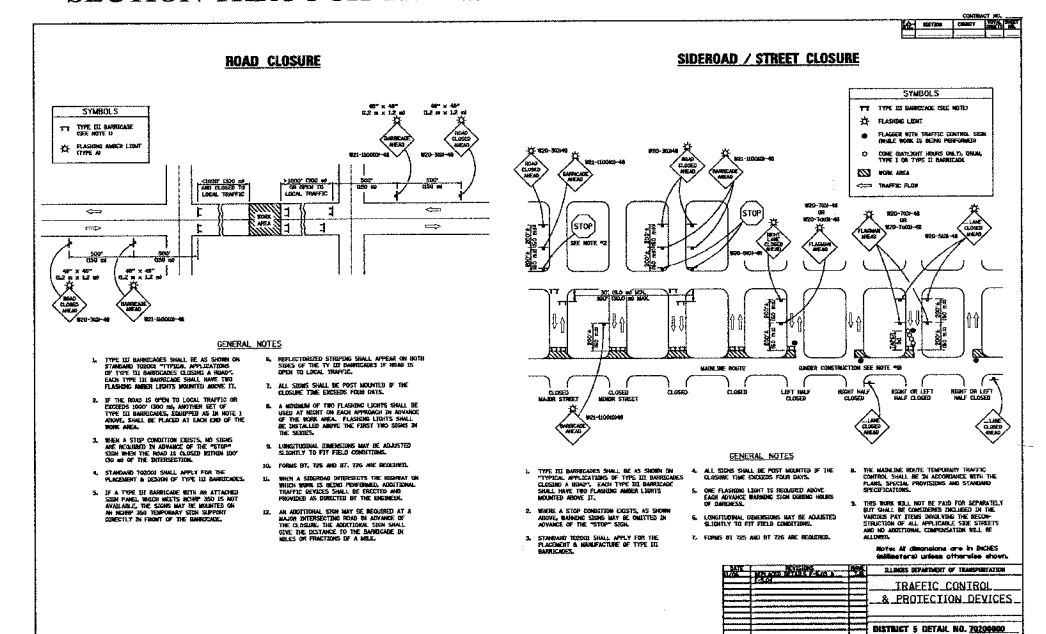
DEPRESSED CURB TAPER DETAIL



DETAIL OF COMMERCIAL ENTRANCES



DETAIL OF RESIDENTIAL ENTRANCES



FRANCIS ASSOCIATES
CONSULTING ENGINEERS
LAND SURVEYORS
330 NORTH CENTRAL AVENUE
PARIS, ILLINOIS 61944
PH. (217) 465-5306
PROFESSIONAL DESIGN FIRM #184-001406

SCALES		DRAWN	DATE
PLAN :	N/A	TJT	3/5/07
REVISION		CHECKED	DATE
DATE		APPROVED	DATE
DATE		REVISION	DATE
DATE		DATE	

FRANCIS ASSOC.
FILE NO.
P-356

MISCELLANEOUS DETAILS SHEET
PLANS FOR PROPOSED IMPROVEMENTS TO EAST COURT STREET F.A.U. ROUTE 7562
CITY OF PARIS, ILLINOIS, EDGAR COUNTY

SHEET NO.
13
OF 26 SHEETS