

SEC. 26, T.24 N., R.2 E., 3rd P.M.
MCLEAN COUNTY, ILLINOIS

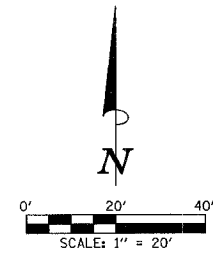
F.A.U. SECTION COUNTY TOTAL SHEETS SHEET NO.
6352 02-00218-00-SP MCLEAN 35 13
6412
STA. TO STA.
ILLINOIS FED. AID PROJECT

CONTRACT NO. 91363

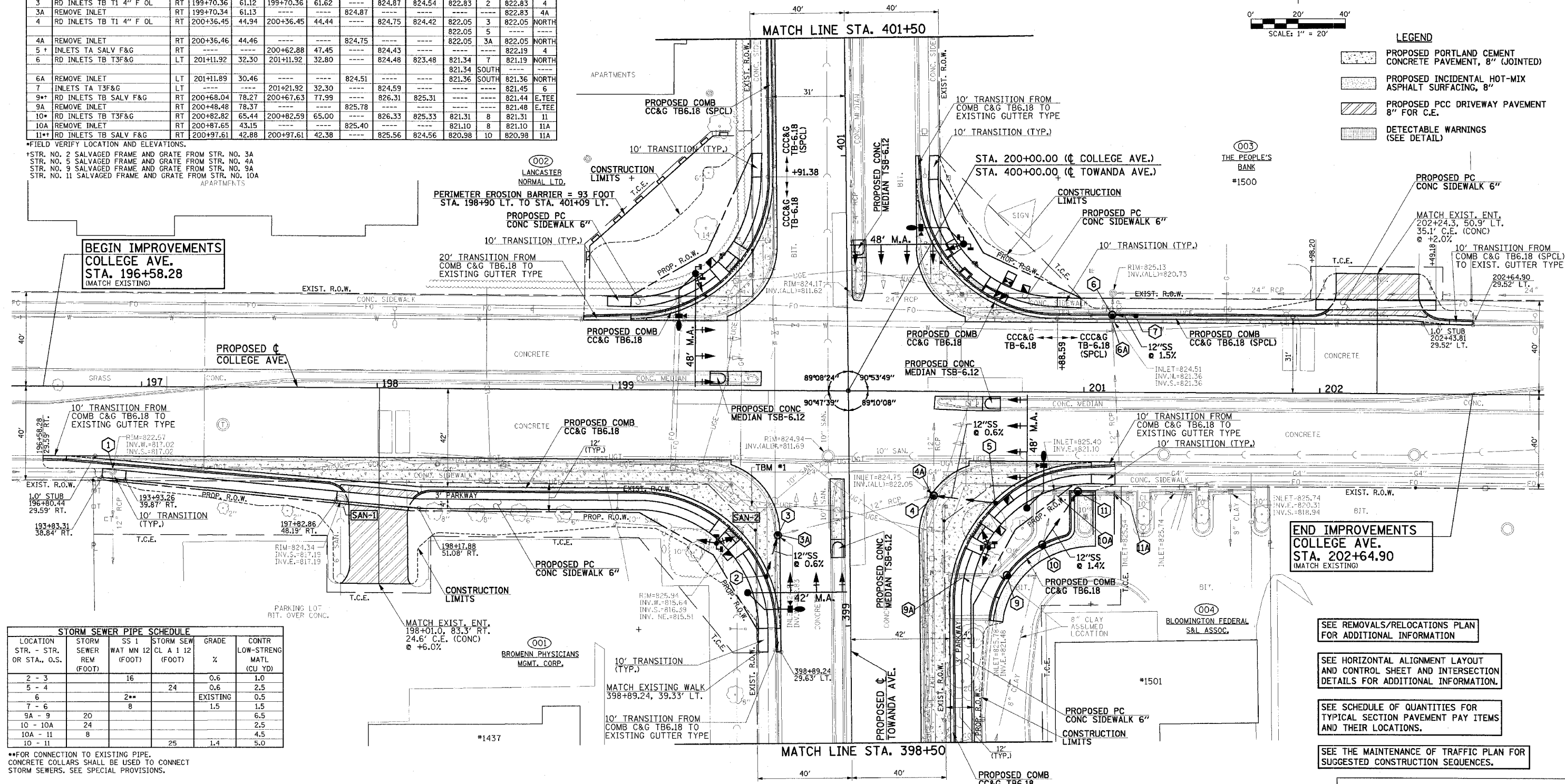
STR. NO.	STRUCTURE TYPE	OFF-SET SIDE	STA. OF C/L 2 FT. OPENING	OFFSET OF C/L 2 FT. OPENING	STA. OF C/L STR.	OFFSET OF C/L STR.	EX. T/O FRAME/GRATE ELEV.	PR. T/O FRAME/GRATE ELEV.	PR. T/O FLAT SLAB TOP ELEV.	INVERT IN ELEV.	U.S. STR. NO.	INVERT OUT ELEV.	D.S. STR. NO.
1	MAN ADJUST	RT	---	---	196+87.92	36.41	822.57	822.43	---	---	---	817.02	---
2*	INLETS TA SALV F&G	RT	---	---	199+65.49	79.19	---	824.98	---	---	---	822.92	3
3	RD INLETS TB T1 4" F OL	RT	199+70.36	61.12	199+70.36	61.62	---	824.87	824.54	822.83	2	822.83	4
3A	REMOVE INLET	RT	199+70.34	61.13	---	---	824.87	---	---	---	---	822.83	4A
4	RD INLETS TB T1 4" F OL	RT	200+36.45	44.94	200+36.45	44.44	---	824.75	824.42	822.05	3	822.05	NORTH
4A	REMOVE INLET	RT	200+36.46	44.46	---	---	824.75	---	---	---	---	822.05	5
5*	INLETS TA SALV F&G	RT	---	---	200+62.88	47.45	---	824.43	---	---	---	822.19	4
6	RD INLETS TB T3F&G	LT	201+11.92	32.30	201+11.92	32.80	---	824.48	823.48	821.34	7	821.19	NORTH
6A	REMOVE INLET	LT	201+11.89	30.46	---	---	824.51	---	---	---	---	821.34	SOUTH
7	INLETS TA T3F&G	LT	---	---	201+21.92	32.30	---	824.59	---	---	---	821.45	6
9*	RD INLETS TB SALV F&G	RT	200+68.04	78.27	200+67.63	77.99	---	826.31	825.31	---	---	821.44	E.TEE
9A	REMOVE INLET	RT	200+48.48	78.37	---	---	825.78	---	---	---	---	821.48	E.TEE
10*	RD INLETS TB T3F&G	RT	200+82.82	65.44	200+82.59	65.00	---	826.33	825.33	821.31	8	821.31	11
10A	REMOVE INLET	RT	200+87.65	43.15	---	---	825.40	---	---	---	---	821.10	8
11*	RD INLETS TB SALV F&G	RT	200+97.61	42.88	200+97.61	42.38	---	825.56	824.56	820.98	10	820.98	11A

*FIELD VERIFY LOCATION AND ELEVATIONS.
*STR. NO. 2 SALVAGED FRAME AND GRATE FROM STR. NO. 3A
*STR. NO. 5 SALVAGED FRAME AND GRATE FROM STR. NO. 4A
*STR. NO. 9 SALVAGED FRAME AND GRATE FROM STR. NO. 9A
*STR. NO. 11 SALVAGED FRAME AND GRATE FROM STR. NO. 10A

INLET FILTERS = 8 EACH
PLACED AT ALL DRAINAGE STRUCTURES
WITHIN PAVED AREAS WITH OPEN LIDS
OR GRATES.



- LEGEND**
- PROPOSED PORTLAND CEMENT CONCRETE PAVEMENT, 8" (JOINTED)
 - PROPOSED INCIDENTAL HOT-MIX ASPHALT SURFACING, 8"
 - PROPOSED PCC DRIVEWAY PAVEMENT 8" FOR C.E.
 - DETECTABLE WARNINGS (SEE DETAIL)



LOCATION STR. - STR. OR STA., O.S.	STORM SEWER REM (FOOT)	SS 1 WAT MN 12 (FOOT)	STORM SEW CL A 1 12 (FOOT)	GRADE %	CONTR LOW-STRENGTH MATL (CU YD)
2 - 3		16		0.6	1.0
5 - 4			24	0.6	2.5
6		2**		EXISTING	0.5
7 - 6		8		1.5	1.5
9A - 9	20				6.5
10 - 10A	24				2.5
10A - 11	8				4.5
10 - 11			25	1.4	5.0

**FOR CONNECTION TO EXISTING PIPE. CONCRETE COLLARS SHALL BE USED TO CONNECT STORM SEWERS. SEE SPECIAL PROVISIONS.

STR. NO.	STRUCTURE TYPE	OFF-SET SIDE	STA. OF C/L 2 FT. OPENING	OFFSET OF C/L 2 FT. OPENING	STA. OF C/L STR.	OFFSET OF C/L STR.	EX. T/O FRAME/GRATE ELEV.	PR. T/O FRAME/GRATE ELEV.	PR. T/O FLAT SLAB TOP ELEV.	INVERT IN ELEV.	U.S. STR. NO.	INVERT OUT ELEV.	D.S. STR. NO.
SAN-1	MAN ADJUST	RT	---	---	197+84.61	48.42	824.34	823.33	---	817.19	SOUTH	817.19	SAN-2
SAN-2	MAN ADJUST	RT	---	---	199+52.97	60.30	825.94	824.45	---	815.64	SAN-1	815.51	N.E.

SEC. 26, T.24 N., R.2 E., 3rd P.M.
MCLEAN COUNTY, ILLINOIS

p:\n24022\plans\sheet13 p01college.dgn
3/12/2007 3:40:26 PM

ILLINOIS DEPARTMENT OF TRANSPORTATION

PLAN - COLLEGE AVENUE

DATE : 3-07
DRAWN BY : S.M.W.
CHECKED BY : J.T.P.

SCALE : 1"=20'

SHEET 13 OF 35 SHEETS N24022

TBM #1-CHISELED "D" ON EAST TOP OF 3' DIA. CONCRETE MASTARM AT SOUTHWEST QUAD. OF COLLEGE AVE AND TOWANDA AVE. STA. 399+50.55, 4L.4' LT. ELEV. 825.72
TBM #2-CHISELED "D" ON NORTHWEST CORNER OF CONC. FOUNDATION OF LIGHT BOLLARD AT SOUTHWEST QUAD. OF COLLEGE AVE AND TOWANDA AVE. STA. 399+05, 95' RT. ELEV. 828.15

- SEE REMOVALS/RELOCATIONS PLAN FOR ADDITIONAL INFORMATION
- SEE HORIZONTAL ALIGNMENT LAYOUT AND CONTROL SHEET AND INTERSECTION DETAILS FOR ADDITIONAL INFORMATION.
- SEE SCHEDULE OF QUANTITIES FOR TYPICAL SECTION PAVEMENT PAY ITEMS AND THEIR LOCATIONS.
- SEE THE MAINTENANCE OF TRAFFIC PLAN FOR SUGGESTED CONSTRUCTION SEQUENCES.