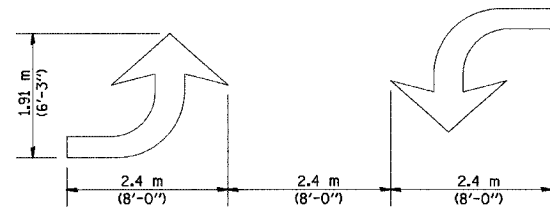
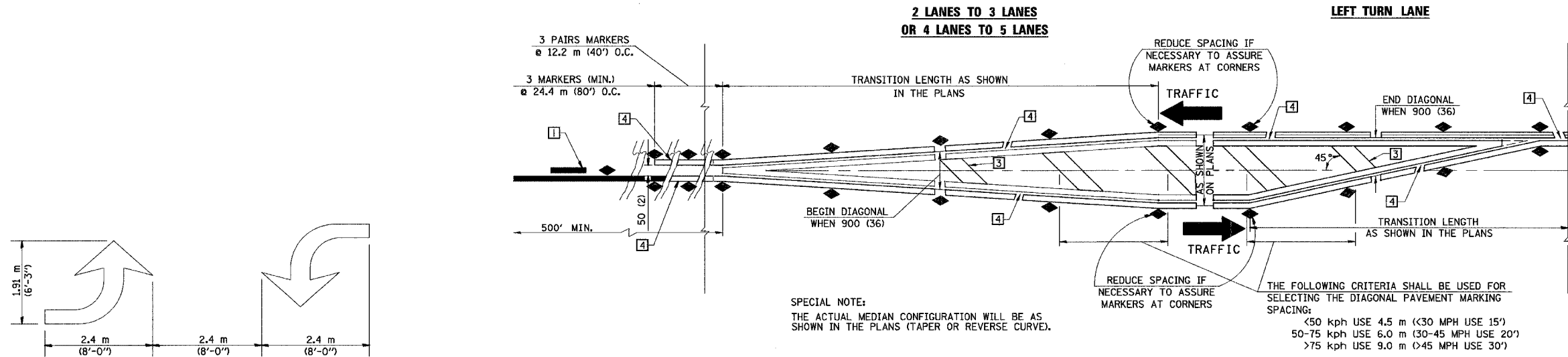
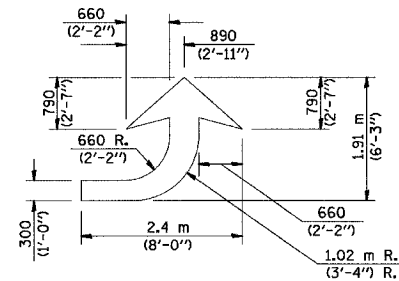


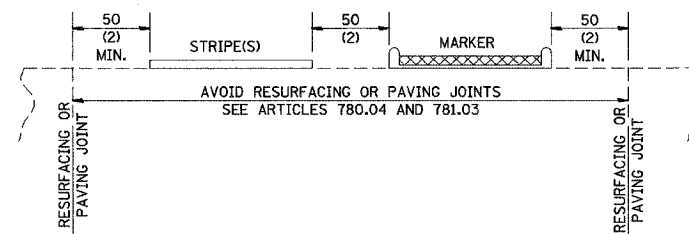
TYPICAL APPLICATIONS OF PAVEMENT MARKINGS AND MARKERS



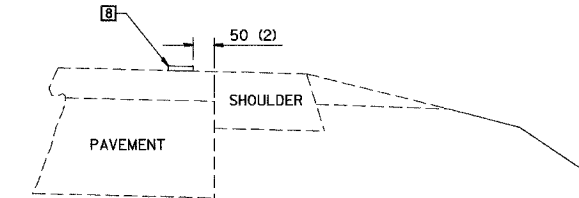
TYPICAL DOUBLE TURN ARROWS (WHITE)



LEFT ARROW
REVERSE FOR RIGHT ARROW
AREA= 1.47 m² (15.6 SQ. FT.)
(WHITE)



RELATIONSHIP OF STRIPES, MARKERS AND JOINTS



RELATIONSHIP OF EDGE STRIPE TO SAFETY SHOULDER OR PAVED SURFACE

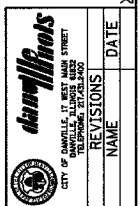
GENERAL NOTES

1. WHEN MEDIANS ARE PRESENT PAVEMENT MARKINGS ARE TO BE PLACED ADJACENT TO MEDIANS.
2. SCALE: NONE
3. SOME OF THE INFORMATION INCLUDED WITH THIS DETAIL MAY NOT BE APPLICABLE TO THIS IMPROVEMENT.
4. PAVEMENT MARKINGS ARE TO BE EXTENDED THROUGH OMISSIONS WHEN APPLICABLE.
5. A STRIPING KEY IS AVAILABLE ELSEWHERE AND SHALL BE SHOWN WHERE THE QUANTITIES ARE LISTED.
6. FINAL PAVEMENT MARKINGS SHALL BE IN PLACE PRIOR TO PLACING ANY RAISED REFLECTIVE PAVEMENT MARKERS.
7. THE FOLLOWING CRITERIA SHALL BE USED FOR SELECTING THE DIAGONAL PAVEMENT MARKING SPACING:
< 50 kph USE 4.5 m (< 30 MPH USE 15')
50-75 kph USE 6.0 m (30-45 MPH USE 20')
> 75 kph USE 9.0 m (> 45 MPH USE 30')

All dimensions are in millimeters (inches) unless otherwise shown.

DESIGNED	NAME	DATE	REVISIONS		REVISIONS	
J.M.H.	J.M.H.	6/88	NAME	DATE	NAME	DATE
CHECKED	C.T.D.	6/88	G.A.M.	11/95	D.L.P.	8/97
CADD NO.	F-5.25		CHECKED D.L.P.	12/95	GEOMETRICS	6/01

SHEET 3 OF 3



DEPARTMENT OF ENGINEERING
DANVILLE, IL R. DAVID SCHNELLE, CITY ENGINEER
LYNCH ROAD IMPROVEMENT
IDOI DISTRICT 5
CADD DETAILS IV

SCALE: 1:20
DATE: 3/12/2007

DRAWN BY: BDS
CHECKED BY: MEW

X:\Projects\Civil\Current\05010215-Lynch_Spur\Civil\CON\DET005.dgn