

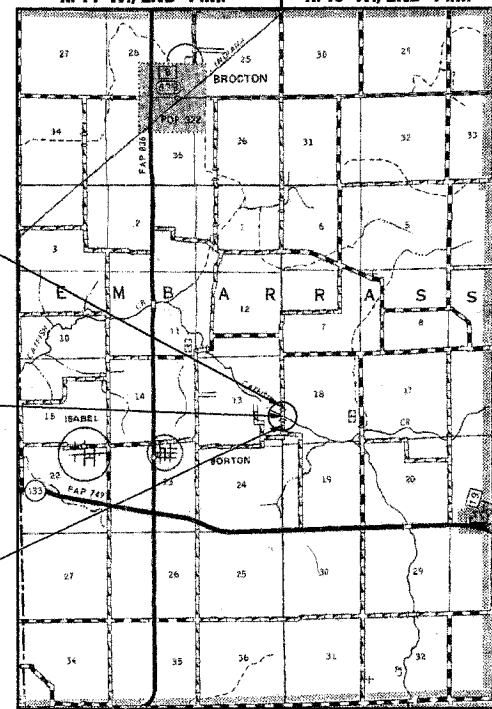
STATE OF ILLINOIS
DEPARTMENT OF TRANSPORTATION
DIVISION OF HIGHWAYS
PLANS FOR PROPOSED
HIGHWAY BRIDGE PROGRAM

EMBARRASS ROAD DISTRICT
SECTION 06-05132-00-BR

EDGAR COUNTY
PROJECT NO. BROS-045(41)
T.R. 60

JOB NO. C-95-309-07

R. 14 W., 2ND P.M. | R. 13 W., 2ND P.M.



IMPROVEMENT ENDS
STA. 19 + 50

STA. 15 + 00 - SPECIAL BRIDGE DESIGN
 PRECAST PRESTRESSED CONCRETE DECK
 BEAM BRIDGE; TWO SPANS @ 63'-0",
 27'-0" ROADWAY; SKEW = 0°
 EXISTING S.N. 023-4406
 PROPOSED S.N. 023-4428

IMPROVEMENT BEGINS
STA. 11 + 50

FUNCTIONAL CLASSIFICATION LOCAL ROAD CURRENT ADT LESS THAN 150

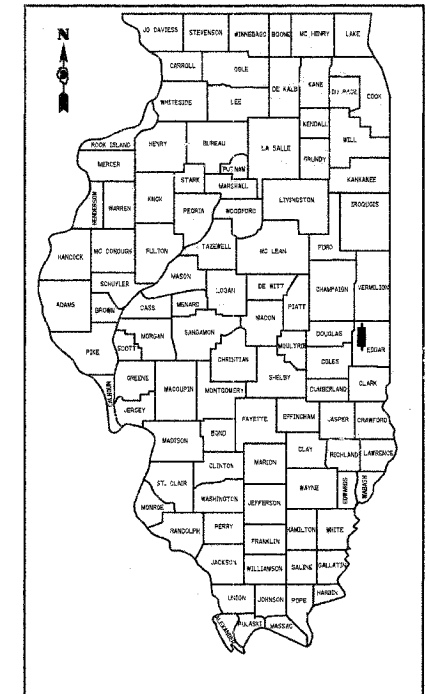
LOCATION PLAN

GROSS LENGTH OF SECTION = 800 FEET = 0.152 MILES
 NET LENGTH OF SECTION = 800 FEET = 0.152 MILES



ROUTE NO.	SECTION	COUNTY	TOTAL SHEETS	SHEET NO.
T.R. 60	06-05132-00-BR	EDGAR	15	1
ROAD DIST.		ILLINOIS	EMBARRASS	

CONTRACT NO. 91374



LOCATION OF SECTION INDICATED THUS: [arrow pointing to the rectangle on the map]

CLASSIFICATION: LOCAL ROAD NON-URBAN
 DESIGN VOLUME: <150 ADT
 CURRENT ADT: <150 ADT
 DESIGN SPEED: 30 MPH

TOLL FREE JOINT UTILITY LOCATING
 INFORMATION FOR EXCAVATORS (J.U.L.I.E.)
 TELEPHONE NUMBER 1-800-892-0123

PASSED	<i>[Signature]</i>	20 07
ROAD DISTRICT COMMISSIONER		
APPROVED	<i>[Signature]</i>	20 07
COUNTY ENGINEER		
PASSED	<i>[Signature]</i>	3/15 20 07
DISTRICT FIVE ENGINEER OF LOCAL ROADS & STREETS		
RELEASED FOR BID BASED ON LIMITED REVIEW	<i>[Signature]</i>	20 07
DEPUTY DIRECTOR OF HIGHWAYS, REGION THREE ENGINEER		
STATE OF ILLINOIS DEPARTMENT OF TRANSPORTATION		



Fred J. Stone, Inc. (1-25-07)
 ILLINOIS PROFESSIONAL NO. 26065
 EXPIRES 11-30-07

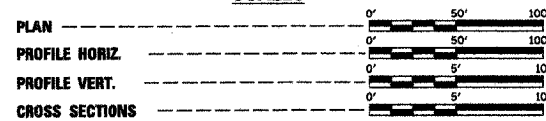
INDEX OF SHEETS

SHEET NO.	TITLE
1.	COVER SHEET
2.	SUMMARY OF QUANTITIES, GENERAL NOTES & TYPICAL SECTIONS
3.	PLAN AND PROFILE SHEET
4.-8.	BRIDGE PLANS
9.-14.	STATION CROSS SECTIONS
15.	EROSION CONTROL PLAN

STANDARDS:

280001-03	TEMPORARY EROSION CONTROL SYSTEMS
515001-02	NAME PLATE FOR BRIDGES
631026-03	TRAFFIC BARRIER TERMINAL TYPE 5
635006-02	REFLECTOR AND TERMINAL MARKER REPLACEMENT
702001-06	TYPICAL APPLICATION OF TRAFFIC CONTROL DEVICES FOR CONSTRUCTION ON RURAL LOCAL HIGHWAYS
BLR 21-6	TRAFFIC CONTROL DEVICES

SCALES



4440 ASH GROVE
 SPRINGFIELD, IL 62711
 (217) 793-8600
 www.fehr-graham.com

FEHR-GRAHAM & ASSOCIATES, LLC
 ENGINEERING AND SCIENCE CONSULTANTS
PROFESSIONAL ENGINEERS, ARCHITECTS, PLANNERS, ENVIRONMENTAL SCIENTISTS

ROUTE NO.	SECTION	COUNTY	TOTAL SHEETS	SHEET NO.
T.R. 60	06-05132-00-BR	EDGAR	15	2
ROAD DIST.	ILLINOIS		EMBARRASS	
CONTRACT NO. 91374				

SUMMARY OF QUANTITIES

NUMBER	ITEM	UNIT	QUANTITY
20100110	TREE REMOVAL (6 TO 15 UNITS DIAMETER)	UNIT	204
20100210	TREE REMOVAL (OVER 15 UNITS DIAMETER)	UNIT	72
20100500	TREE REMOVAL, ACRES	ACRE	0.1
20200100	EARTH EXCAVATION	CU YD	1,043
20300100	CHANNEL EXCAVATION	CU YD	240
20400800	FURNISHED EXCAVATION	CU YD	1,973
25001000	SEEDING, CLASS 2 (SPECIAL)	ACRE	0.8
28000250	TEMPORARY EROSION CONTROL SEEDING	POUND	94
28000300	TEMPORARY DITCH CHECKS	EACH	12
28000400	PERIMETER EROSION BARRIER	FOOT	1,500
28000500	INLET AND PIPE PROTECTION	EACH	4
28100207	STONE RIPRAP, CLASS A4	TON	190
28200200	FILTER FABRIC	SQ YD	240
40200800	AGGREGATE SURFACE COURSE, TYPE B	TON	586
50100100	REMOVAL OF EXISTING STRUCTURES	EACH	1
50300225	CONCRETE STRUCTURES	CU YD	39.6
50400505	PRECAST PRESTRESSED CONCRETE DECK BEAMS (27" DEPTH)	SQ FT	3,402
50800105	REINFORCEMENT BARS	POUND	4,130
50900205	STEEL RAILING, TYPE S1	FOOT	253
51201600	FURNISHING STEEL PILES HP12X53	FOOT	452
51202305	DRIVING PILES	FOOT	452
51203600	TEST PILE STEEL HP12X53	EACH	3
50200260	CONCRETE ENCASEMENT	CU YD	20.7
51500100	NAME PLATES	EACH	1
54200220	PIPE CULVERTS, CLASS D, TYPE 1 15"	FOOT	102
54201063	PIPE CULVERTS, CLASS D, TYPE 2 18"	FOOT	60
67100100	MOBILIZATION	L SUM	1
78201000	TERMINAL MARKER - DIRECT APPLIED	EACH	4
X5020501	UNDERWATER STRUCTURE EXCAVATION PROTECTION - LOCATION 1	EACH	1

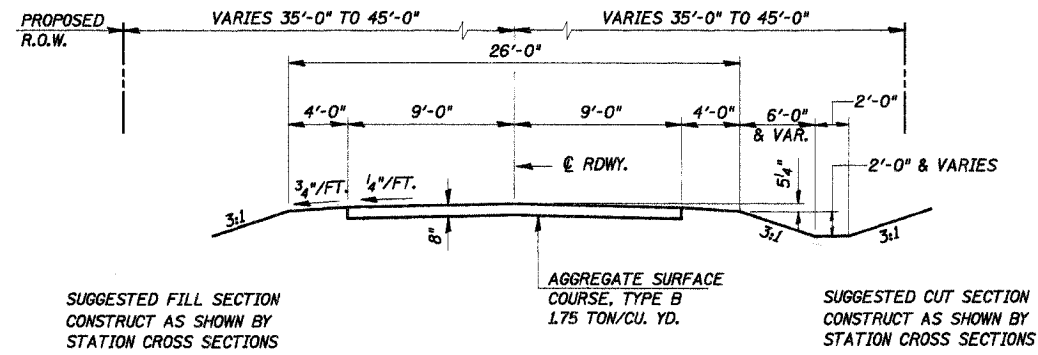
*SEE SPECIAL PROVISIONS

GENERAL NOTES

- WHERE SECTION OR SUBSECTION MONUMENTS ARE ENCOUNTERED, THE ENGINEER SHALL BE NOTIFIED BEFORE SUCH MONUMENTS ARE REMOVED. THE CONTRACTOR SHALL PROTECT AND CAREFULLY PRESERVE ALL PROPERTY MARKS AND MONUMENTS UNTIL THE OWNER, AND AUTHORIZED SURVEYOR OR AGENT HAS WITNESSED OR OTHERWISE REFERENCED THEIR LOCATION.
- THE AREA TO BE SEEDDED SHALL CONSIST OF ALL DISTURBED EARTH SURFACES WITHIN THE RIGHT OF WAY, AS DIRECTED BY THE ENGINEER.

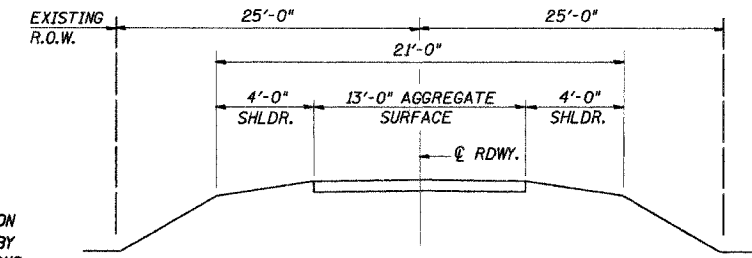
SEEDING, CLASS 2 (SPECIAL) = 0.8 ACRE
- ALL TREES WITHIN THE LIMITS SHOWN BELOW AND THE ADJACENT SHOWN R.O.W. LINES AND EASEMENTS WHICH INTERFERE WITH CONSTRUCTION SHALL BE REMOVED ONLY AS DIRECTED BY THE ENGINEER. SEE SPECIAL PROVISIONS.

33' RT. STA. 11+96 TO 25' RT. STA. 12+50 = 0.01 ACRE
 25' RT. STA. 12+50 TO 38' RT. STA. 14+00 = 0.06 ACRE
 40' RT. STA. 15+57 TO 45' RT. STA. 16+30 = 0.01 ACRE
 TOTAL = 0.08 ACRE
 USE 0.10 ACRE



TYPICAL PROPOSED CROSS SECTION

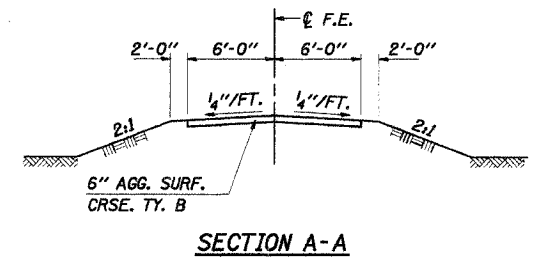
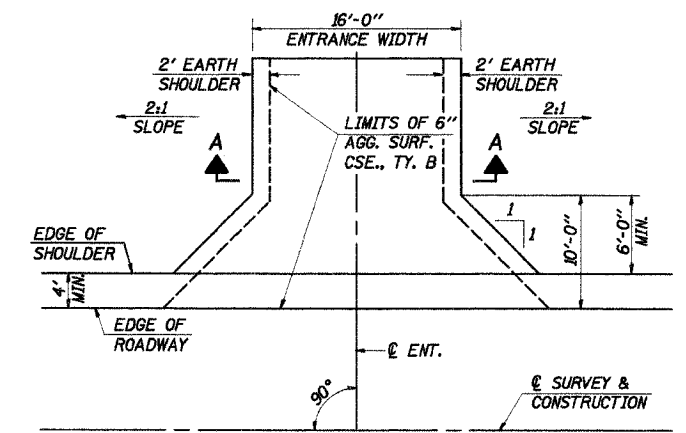
STA. 12+00 TO STA. 19+00
 ROAD CLASSIFICATION: LOCAL ROAD ADT 0-250
 CURRENT ADT LESS THAN 150
 TRANSITION FROM EXISTING ROADWAY TO PROPOSED ROADWAY TO BE CONSTRUCTED FROM STA. 11+50 TO STA. 12+00 AND FROM STA. 19+00 TO STA. 19+50.



INDIVIDUAL TREE REMOVAL SCHEDULE

TREE	LOCATION	INCH DIAMETER
A	22' LT. STA. 14+64	36"
B	33' LT. STA. 15+36	18"
C	28' LT. STA. 15+60	18"
D	26' RT. STA. 16+95	8"
E	26' RT. STA. 16+98	6"
F	26' RT. STA. 17+08	10"
G	26' RT. STA. 17+24	10"
H	26' RT. STA. 17+33	8"
I	26' RT. STA. 17+41	8"
J	26' RT. STA. 17+48	10"
K	26' RT. STA. 17+57	12"
L	26' RT. STA. 15+64	12"
M	26' RT. STA. 17+79	12"
N	26' RT. STA. 17+89	6"
O	26' RT. STA. 18+28	6"
P	26' RT. STA. 18+35	8"
Q	27' RT. STA. 18+65	12"
R	27' RT. STA. 18+73	10"
S	27' RT. STA. 18+80	8"
T	27' RT. STA. 19+10	8"
U	27' RT. STA. 19+17	10"
V	27' RT. STA. 19+24	10"
W	27' RT. STA. 19+31	10"
X	27' RT. STA. 19+38	10"
Y	27' RT. STA. 19+46	10"

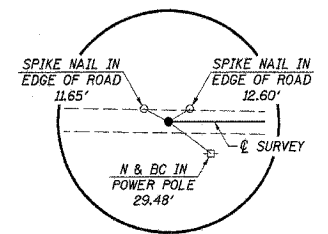
TREE REMOVAL (6 TO 15 UNITS DIAMETER) = 204 UNITS DIAMETER
 TREE REMOVAL (OVER 15 UNITS DIAMETER) = 72 UNITS DIAMETER



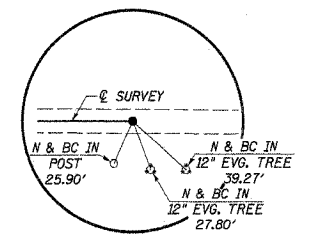
SUMMARY OF QUANTITIES, GENERAL NOTES AND TYPICAL CROSS SECTION
 SECTION 06-05132-00-BR
 EMBARRASS ROAD DISTRICT
 EDGAR COUNTY
 STA. 15+00

4440 ASH GROVE SPRINGFIELD, IL 62711 (217) 793-8600 www.fehr-graham.com	FEHR-GRAHAM & ASSOCIATES, LLC ENGINEERING AND SCIENCE CONSULTANTS PROFESSIONAL ENGINEERS AND ARCHITECTS	DRAWN: S.A.P. DATE: 05/11/06	CHECKED: G.J.C. DATE: 05/18/06	JOB NO.: 46802 FILE: 46802SUMTYP.DGN DATE: 01/24/07
--	--	---------------------------------	-----------------------------------	---

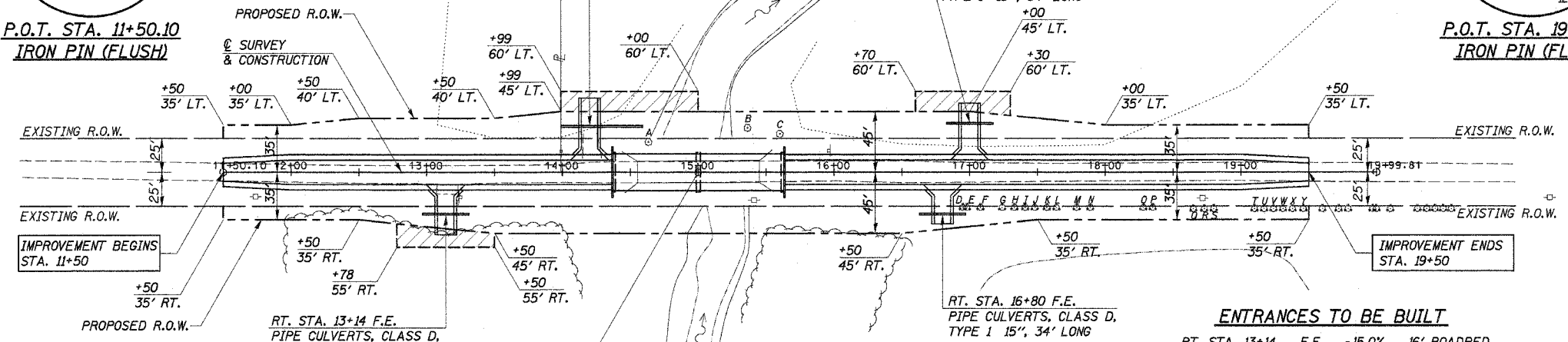
ROUTE	SECTION	COUNTY	TOTAL SHEETS	SHEET NO.
T.R. 60	D6-05132 -00-BR	EDGAR	15	3
STA. 11+50.00 TO STA. 19+99.81		EMBARRASS		
FED. ROAD DIST. NO.		ILLINOIS		
CONTRACT NO. 91374				



P.O.T. STA. 11+50.10
IRON PIN (FLUSH)



P.O.T. STA. 19+99.81
IRON PIN (FLUSH)



CHANNEL EXCAVATION

THE CHANNEL SHALL BE EXCAVATED AS SHOWN WITHIN THE LIMITS OF THE PROPOSED STRUCTURE THEN TAPER TO THE EXISTING CHANNEL AT THE R.O.W. LINES. SUITABLE EXCAVATED MATERIAL TO BE USED IN THE EMBANKMENT AS DIRECTED BY THE ENGINEER.

CHANNEL EXCAVATION = 240 CU. YD.

LLOYD & FRANCES WOOD TRUST

PIPES TO BE REMOVED

RT. STA. 13+14, F.E. PIPE CULVERT WITH CONCRETE HEADWALLS (COST INCIDENTAL TO "EARTH EXCAVATION")

ENTRANCES TO BE BUILT

RT. STA. 13+14, F.E. -15.0%, 16' ROADBED
LT. STA. 14+20, F.E. -15.0%, 16' ROADBED
RT. STA. 16+80, F.E. -10.0%, 16' ROADBED
LT. STA. 17+00, F.E. -15.0%, 16' ROADBED
QUANTITIES INCLUDED IN THOSE LISTED

EXISTING STRUCTURE NO. 023-4406

7-SPAN STEEL I-BEAM BRIDGE WITH TIMBER DECK ON CLOSED TIMBER BACKED ABUTMENTS AND WINGS ON TIMBER PILES
BK.-BK. 90'-6", 0-0. 16'-0", 0° SKEW.

REMOVAL OF EXISTING STRUCTURES = 1 EACH

UTILITIES

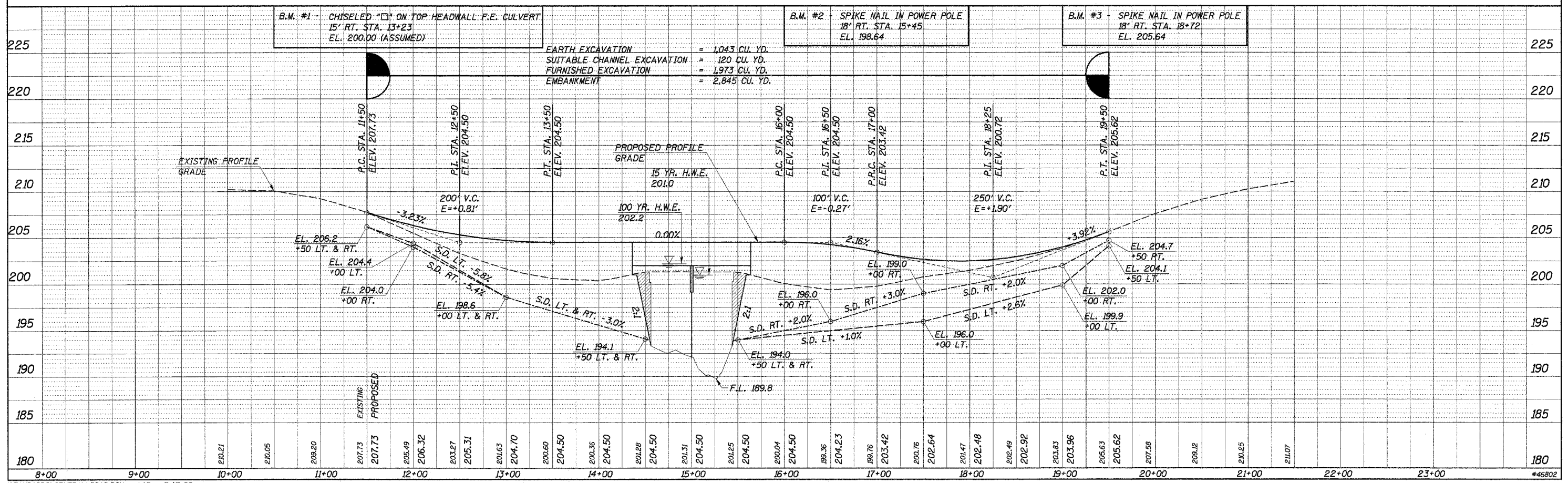
ENESTAR POWER CORP.
TIM HADDIX 217-463-4145 EXT. 617

VERIZON NORTH, INC.
JONNA FRICKE 309-663-3422

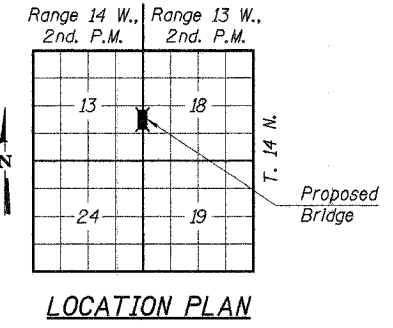
LLOYD & FRANCES WOOD TRUST

INDICATES TEMPORARY CONSTRUCTION EASEMENT TO BE ACQUIRED.

DATE	12/06/08
BY	...
SCALE	...
DESIGNED	...
CHECKED	...
APPROVED	...
PLANNING	...
PROFILE	...



ROUTE NO.	SECTION	COUNTY	TOTAL SHEETS	SHEET NO.
T.R. 60	06-05132-00-BR	EDGAR	15	4
ROAD DIST.	ILLINOIS EMBARRASS		CONTRACT NO. 91374	



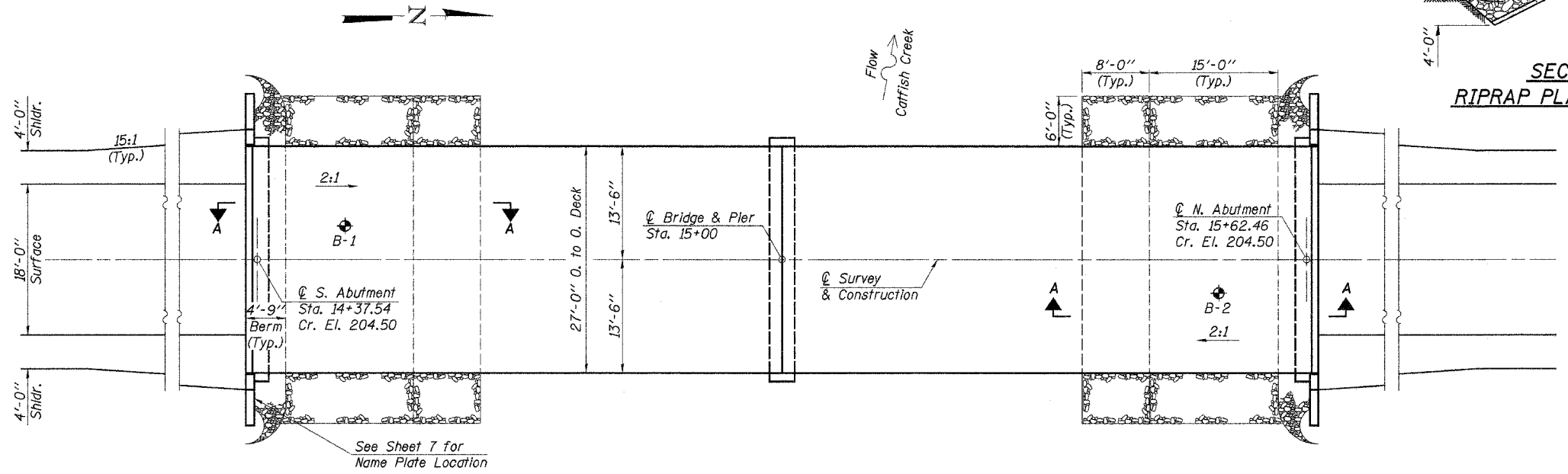
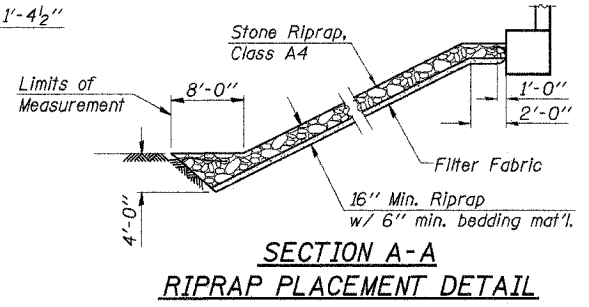
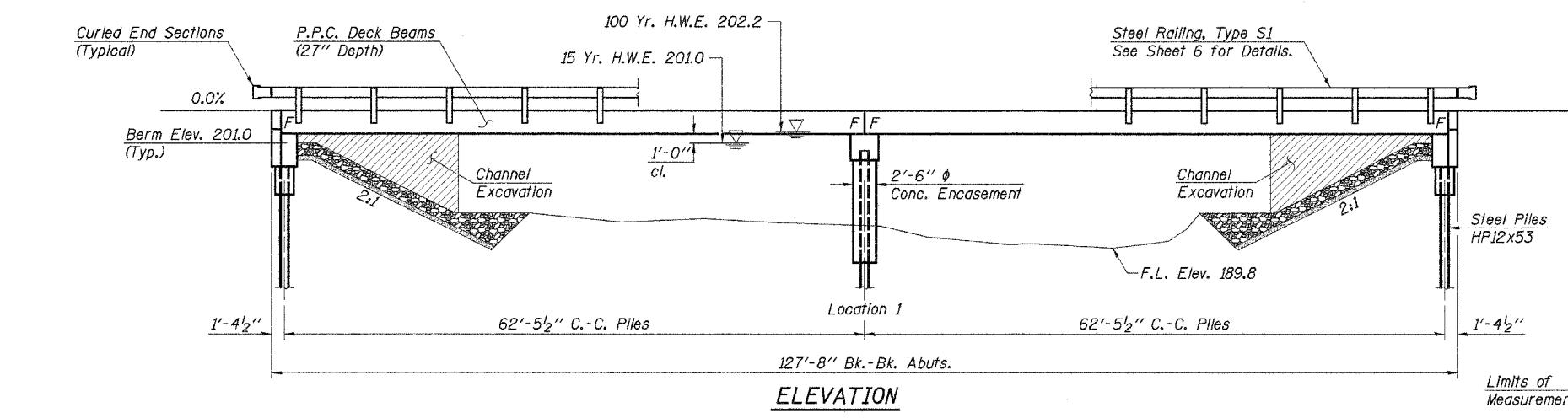
GENERAL NOTES

See Proposal Booklet for Boring data.

Reinforcement bars shall conform to the requirements of ASTM A706 Grade 60 (IL. Modified). See Special Provisions.

The Contractor shall drive one steel HP12x53 test pile in a permanent location at each Abutment and at the Pier as directed by the Engineer, before ordering the remainder of piles.

Layout of slope protection system may be varied in the field to suit ground conditions as directed by the Engineer.



**CATFISH CREEK
BUILT 200_ BY
EMBARRASS ROAD DISTRICT
EDGAR COUNTY
SEC. 06-05132-00-BR
F.A. PROJ. BROS-045(41)
STR. NO. 023-4428 LOADING HS20**

LETTERING FOR NAME PLATE
See Std. 515001

TOTAL BILL OF MATERIAL

ITEM	UNIT	SUPER	SUB	TOTAL
Precast Prestressed Concrete Deck Beams (27" Depth)	Sq. Ft.	3,402		3,402
Concrete Structures	Cu. Yd.		39.6	39.6
Reinforcement Bars	Pound		4,130	4,130
Steel Railing, Type S1	Foot	253		253
Name Plates	Each		1	1
Steel Piles HP12x53	Foot		452	452
Test Pile Steel HP12x53	Each		3	3
Stone Riprap, Class A4	Ton		190	190
Filter Fabric	Sq. Yd.		240	240
Concrete Encasement	Cu. Yd.		20.7	20.7
Underwater Structure Excavation Protection - Location 1	Each		1	1

The requirements of the I.D.N.R. - Division of Water Resources have been fulfilled in accordance with Statewide Permit No. 2

PLAN

DESIGN STRESSES

$f'_c = 5,000$ p.s.i. (Prestressed Beams)
 $f'_{cl} = 4,000$ p.s.i. (Prestressed Beams)
 $f_c = 1,400$ p.s.i. (Concrete)
 $f'_s = 270,000$ p.s.i. (Prestressed Strands)
 $f_{sl} = 201,960$ p.s.i. (Prestressed Strands)
 $f_s = 24,000$ p.s.i. (Reinf. Bars -- Field Units)
 $f_y = 60,000$ p.s.i. (Reinf. Bars -- Field Units)
 $n = 9$ (Concrete)

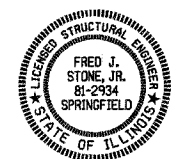
LOADING HS20-44
 Design Specifications: 2002 AASHTO 25#1/Sq. Ft. included in dead load for future wearing surface.

WATERWAY INFORMATION

Drainage Area	50.20 Sq. Mi.
Existing Opening (15 Yr.)	625 Sq. Ft.-Bridge 235 Sq. Ft.-Roadway
Required Opening (15 Yr.)	850 Sq. Ft.
Proposed Opening (15 Yr.)	850 Sq. Ft.
Design Discharge (15 Yr.)	3886 C.F.S.
Created Head (15 Yr.)	0.3 Ft.
100 Year Discharge	6028 C.F.S.
100 Yr. Created Head	0.6 Ft.

"I certify that to the best of my knowledge, information and belief, this bridge design is structurally adequate for the design loading shown on the plans. The design is an economical one for the style of structure and complies with requirements of the current 'AASHTO Standard Specifications for Highway Bridges'."

Fred J. Stone, Jr. (1-25-07)
 ILLINOIS STRUCTURAL NO. 2934 (Expires 11/30/08)



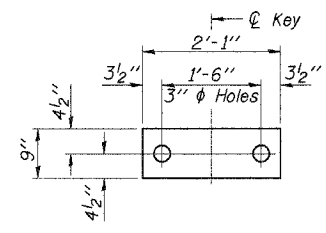
DESIGNED	F.J.S.
CHECKED	A.R.K.
DRAWN	S.A.P.
CHECKED	A.R.K. & F.J.S.

GENERAL PLAN & ELEVATION

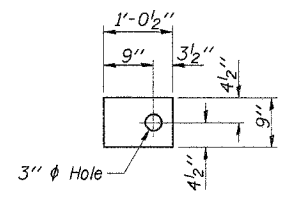
SECTION 06-05132-00-BR
 EMBARRASS ROAD DISTRICT
 EDGAR COUNTY
 STATION 15+00

4440 ASH GROVE SPRINGFIELD, IL 62711 (217) 793-8600 www.fehr-graham.com	FEHR-GRAHAM & ASSOCIATES, LLC ENGINEERING AND SCIENCE CONSULTANTS PROFESSIONAL ENGINEERS AND ARCHITECTS SPRINGFIELD, ILLINOIS	JOB NO.: 46802 FILE: 46802GPE.DGN DATE: 01/24/07
--	---	--

ROUTE NO.	SECTION	COUNTY	TOTAL SHEETS	SHEET NO.
T.R. 60	06-05132-00-BR	EDGAR	15	5
ROAD DIST.	ILLINOIS		EMBARRASS	
CONTRACT NO. 91374				

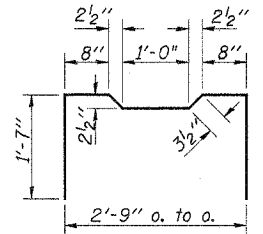


FABRIC BEARING PAD
(Interior)
(32 Req'd)

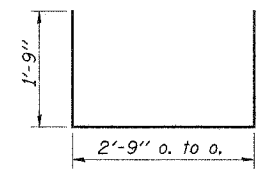


FABRIC BEARING PAD
(Exterior)
(8 Req'd)

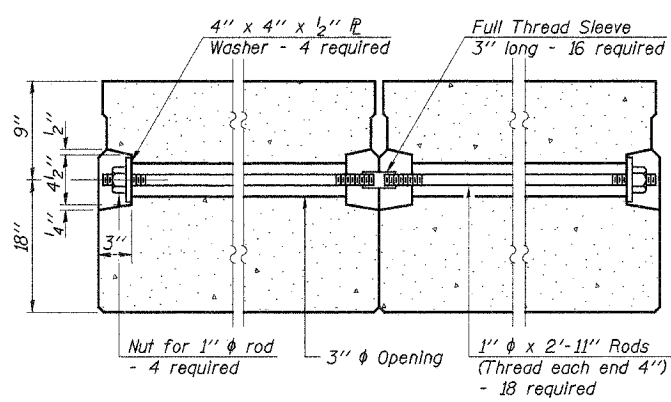
FIXED



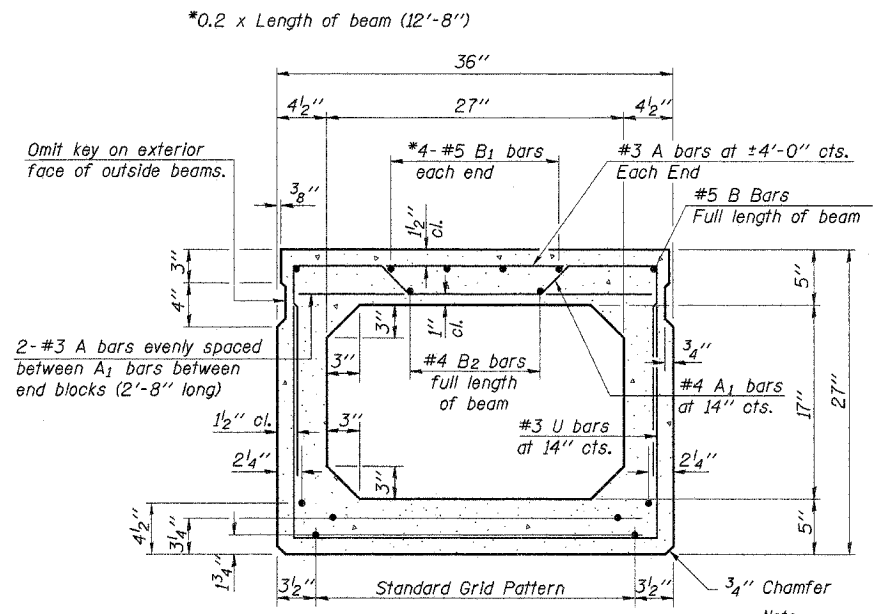
BAR A1



BARS U & U1

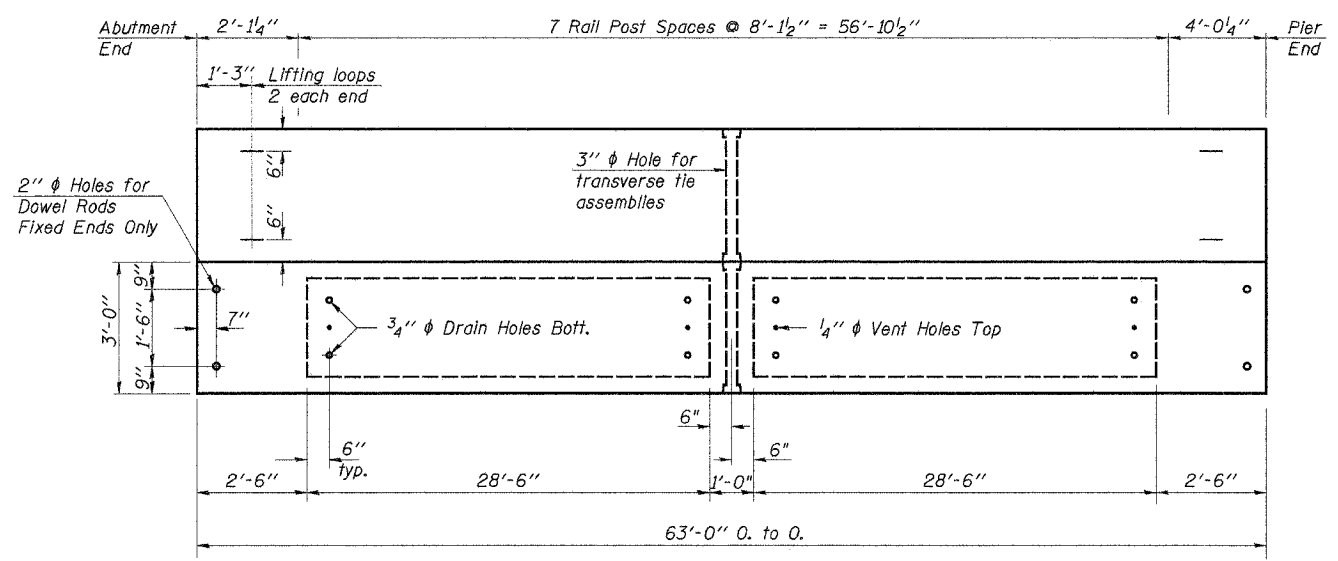


TYPICAL TRANSVERSE TIE ASSEMBLY

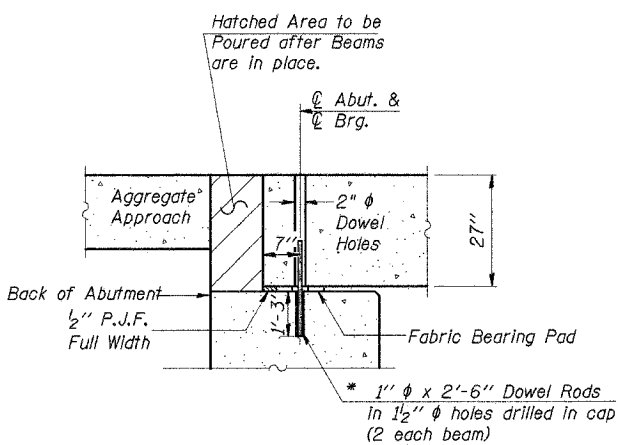


TYPICAL SECTION

14 - 1/2" ϕ Strands Each Strand Stressed to 30,900 Lbs.
6-Strands 1 3/4" up, 6-Strands 3/4" up, 2-Strands 4 1/2" up

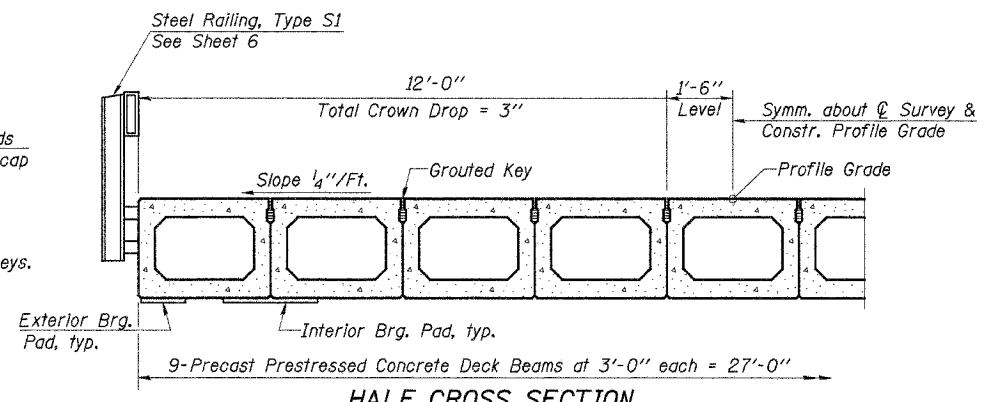


PLAN



SEC. THRU ABUT.

* Dowel Rods to be grouted after beams are in place and allowed to cure (Min. 24 hrs.) prior to grouting the shear keys.



HALF CROSS SECTION

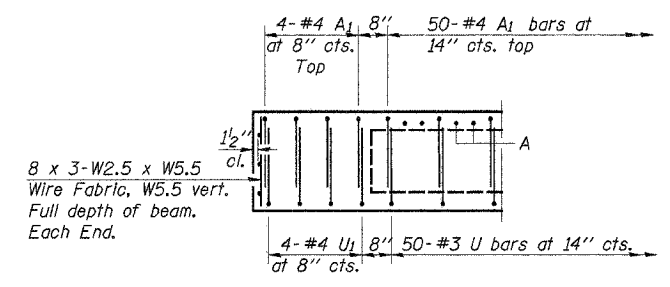
BILL OF MATERIAL

Item	Unit	Quantity
Precast Prestressed Concrete Deck Beams (27" Depth)	Sq. Ft.	3,402

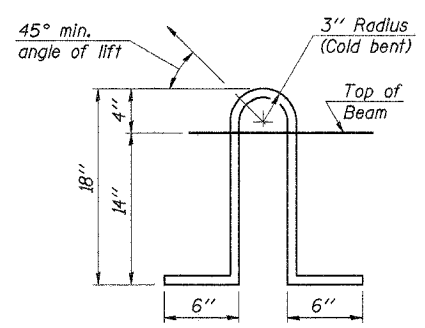
Estimated Total Weight (One Beam) = 38,530 Pounds

SUPERSTRUCTURE

SECTION 06-05132-00-BR
EMBARRASS ROAD DISTRICT
EDGAR COUNTY
STATION 15+00



END ELEVATION



LIFTING LOOP DETAIL

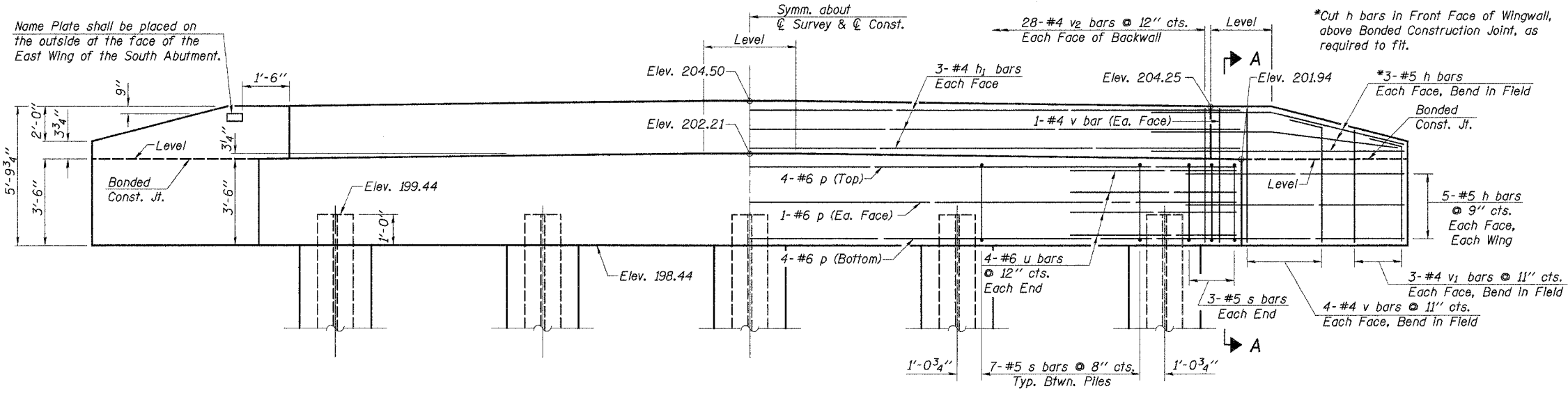
NOTES

Prestressing steel shall be uncoated high strength, low relaxation 7-wire strand, Grade 270. The nominal diameter shall be 1/2" and the nominal cross-sectional area shall be 0.153 sq. in. Lifting loops shall be 3-1/2" ϕ 270 ksi strands, as shown. The 1" ϕ rods in the transverse tie assembly shall be tightened to a snug fit and the threads set. Pockets that receive transverse tie bar on outside shall be filled with grout after transverse tie assembly is in place. Non prestressing steel shall conform to AASHTO M-31 or M-322, Grade 60. The bearing seat surfaces shall be adjusted by shimming to assure firm and even bearing. Two 1/8" fabric adjusting shims of the dimensions of the Exterior Bearing Pad shall be provided for each bearing. Keyway surfaces shall be cleaned to remove form oil or other bond breaking material prior to shipment of the beams. Cleaning shall be done by sandblasting the keyway areas between top of the beam and the bottom edge of the key. Corrosion Inhibitor, as covered in the Standard Specifications, shall be used in the concrete for precast prestressed concrete deck beams. Required Release Strength, f'ci, shall be 4,000 p.s.i.

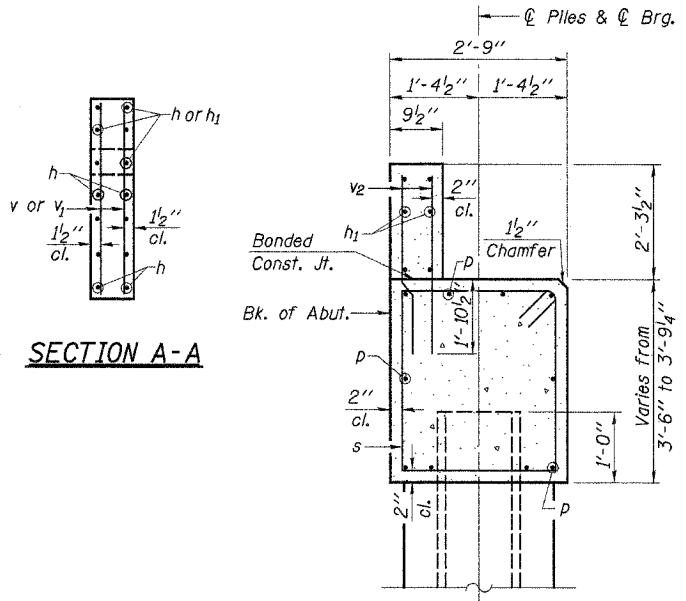
DESIGNED	F.J.S.
CHECKED	A.R.K.
DRAWN	S.A.P.
CHECKED	A.R.K. & F.J.S.

PD-5-S 9-1-03

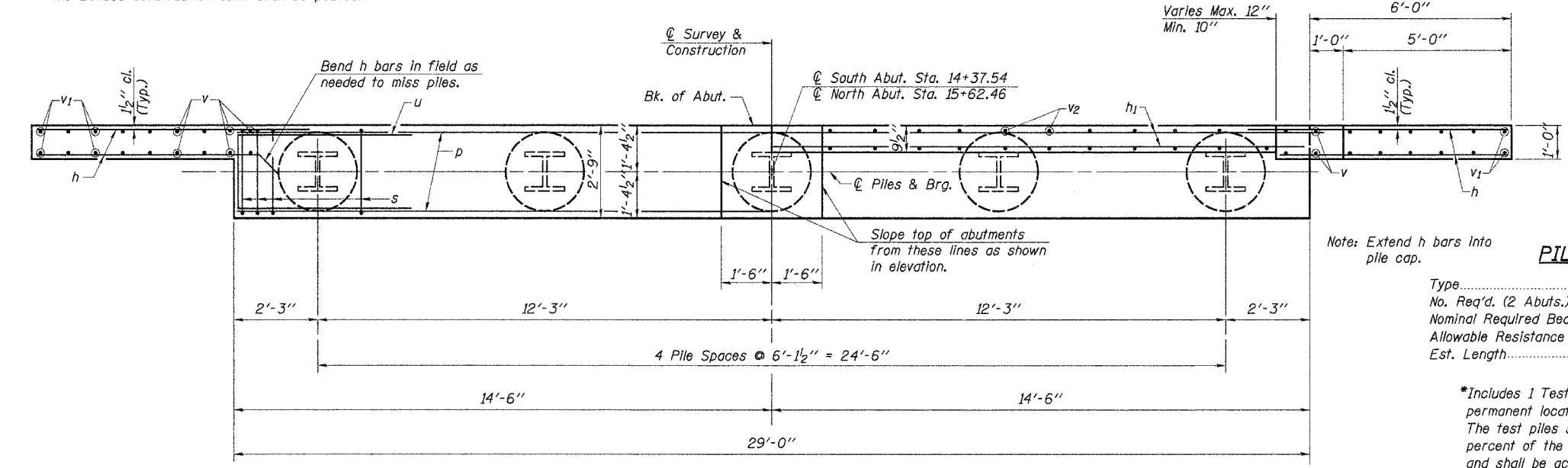
ROUTE NO.	SECTION	COUNTY	TOTAL SHEETS	SHEET NO.
T.R. 60	06-05132-00-BR	EDGAR	15	7
ROAD DIST.	ILLINOIS		EMBARRASS	
CONTRACT NO. 91374				



ELEVATION



Note: After beams are in place and dowel rods grouted, the backwall and the portions of the wingwalls above the Bonded Construction Joint shall be poured.



PLAN

Note: Extend h bars into pile cap.

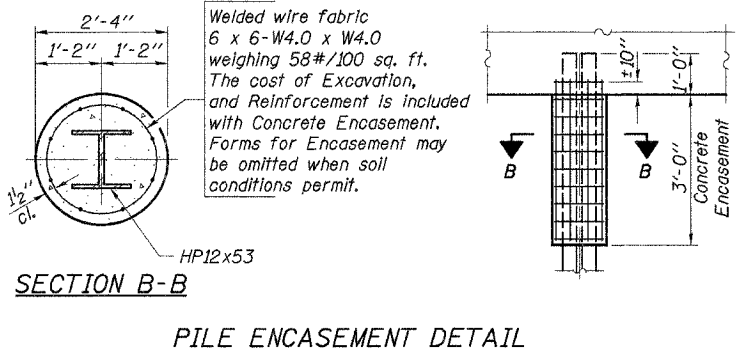
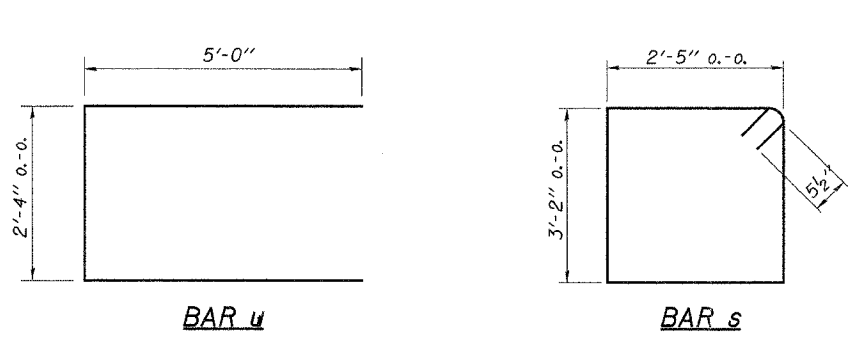
PILE DATA

Type.....	Steel HP12x53
No. Req'd. (2 Abuts.).....	10*
Nominal Required Bearing.....	264 Kips/Pile
Allowable Resistance Available.....	88 Kips/Pile
Est. Length.....	25 Feet/Pile S. Abut. 34 Feet/Pile N. Abut.

*Includes 1 Test Pile to be driven in a permanent location at Each Abutment. The test piles shall be driven to 110 percent of the Nominal Required Bearing and shall be according to AASHTO M270 Grade 50.

**2 ABUTMENTS
BILL OF MATERIAL**

Bar	No.	Size	Length	Shape
h	64	#5	7'-3"	—
h1	12	#4	30'-0"	—
p	20	#6	28'-8"	—
s	68	#5	12'-1"	□
u	16	#6	12'-4"	—
v	40	#4	5'-6"	—
v1	24	#4	4'-6"	—
v2	112	#4	4'-0"	—
Concrete Structures	Cu. Yd.	30.0		
Reinforcement Bars	Pound	3,260		
Name Plates	Each	1		
Test Pile Steel HP12x53	Each	2		
Steel Piles HP12x53	Foot	236		
Concrete Encasement	Cu. Yd.	4.8		



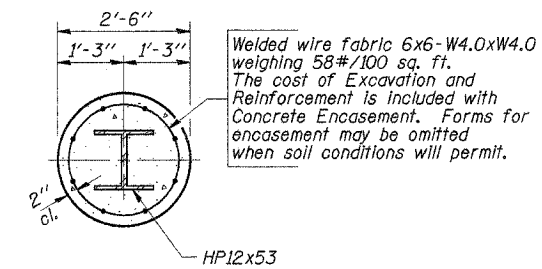
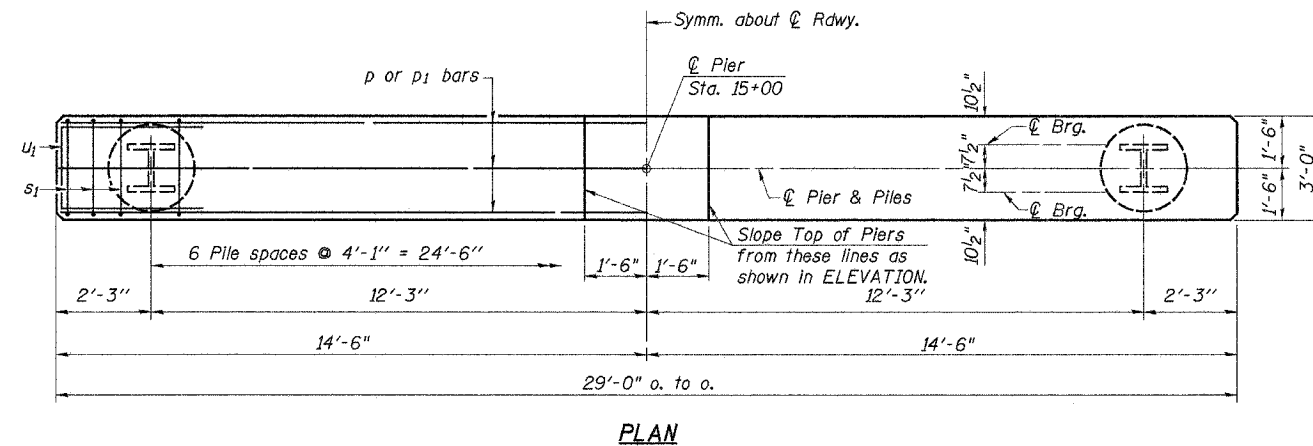
DESIGNED	F.J.S.
CHECKED	A.R.K.
DRAWN	S.A.P.
CHECKED	A.R.K. & F.J.S.

ABUTMENTS

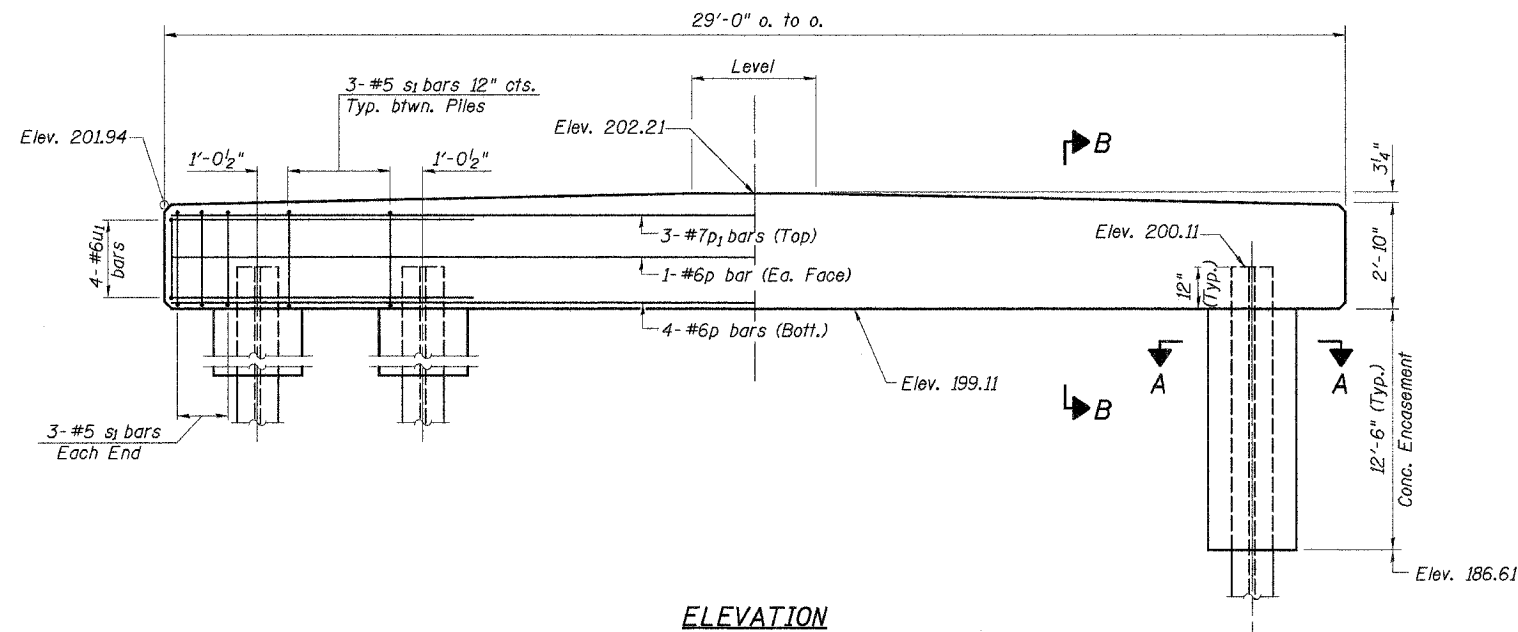
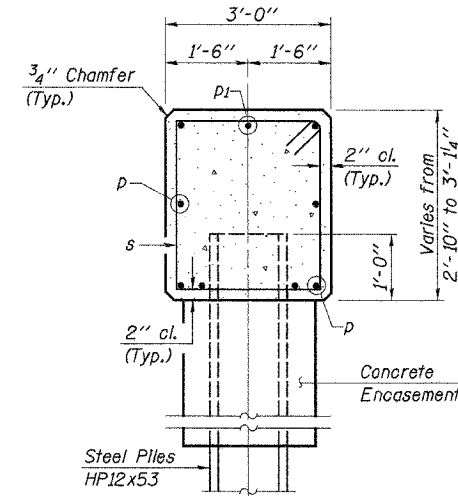
SECTION 06-05132-00-BR
EMBARRASS ROAD DISTRICT
EDGAR COUNTY
STATION 15+00

4440 ASH GROVE SPRINGFIELD, IL 62711 (217) 793-8600 www.fehr-graham.com	<p>FEHR-GRAHAM & ASSOCIATES, LLC ENGINEERING AND SCIENCE CONSULTANTS</p>	JOB NO.: 46802 FILE: 46802ABUT.DGN DATE: 01/24/07
--	---	---

ROUTE NO.	SECTION	COUNTY	TOTAL SHEETS	SHEET NO.
T.R. 60	06-05132-00-BR	EDGAR	15	8
ROAD DIST.	ILLINOIS		EMBARRASS	
CONTRACT NO. 91374				



Welded wire fabric 6x6-W4.0xW4.0 weighing 58#/100 sq. ft. The cost of Excavation and Reinforcement is included with Concrete Encasement. Forms for encasement may be omitted when soil conditions will permit.



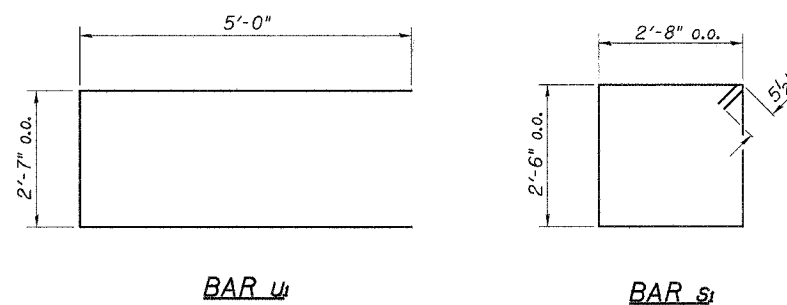
PILE DATA

Type.....	Steel HP12x53
No. Req'd. (2 Abuts.).....	7*
Nominal Required Bearing.....	324 Kips/Pile
Allowable Resistance Available.....	108 Kips/Pile
Est. Length.....	36 Feet/Pile

*Includes 1 Test Pile to be driven in a permanent location at the pier. The test piles shall be driven to 110 percent of the Nominal Required Bearing and shall be according to AASHTO M270 Grade 50.

BILL OF MATERIAL - PIER

BAR	NO.	SIZE	LENGTH	SHAPE
p	6	#6	28'-8"	—
p1	3	#7	28'-8"	—
s1	24	#5	11'-3"	□
u1	8	#6	12'-7"	—
Concrete Structures			Cu. Yd.	9.6
Reinforcement Bars			Pound	870
Steel Piles HP12x53			Foot	2.16
Test Pile Steel HP12x53			Each	1
Concrete Encasement			Cu. Yd.	15.9



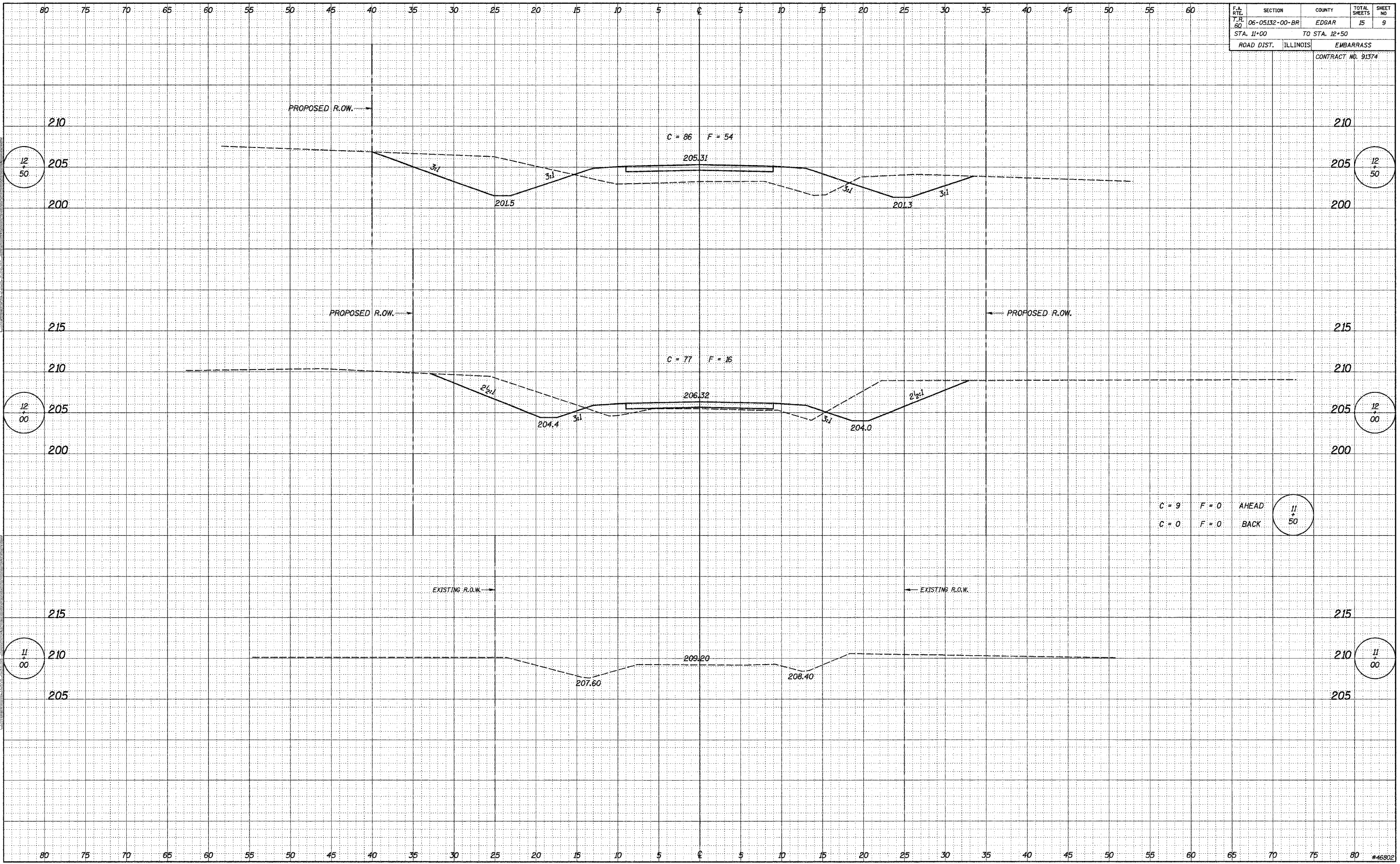
DESIGNED	F.J.S.
CHECKED	A.R.K.
DRAWN	S.A.P.
CHECKED	A.R.K. & F.J.S.

PIER

SECTION 06-05132-00-BR
EMBARRASS ROAD DISTRICT
EDGAR COUNTY
STATION 15+00

4440 ASH GROVE SPRINGFIELD, IL 62711 (217) 793-8600 www.fehr-graham.com	FEHR-GRAHAM & ASSOCIATES, LLC ENGINEERING AND SCIENCE CONSULTANTS MEMPHIS, MISSOURI, MOBILE, ALABAMA, SPRINGFIELD, ILLINOIS	JOB NO.: 46802 FILE: 46802PIER.DGN DATE: 01/24/07
--	--	---

F.A. RITE	SECTION	COUNTY	TOTAL SHEETS	SHEET NO.
T.R. 60	06-05132-00-BR	EDGAR	15	9
STA. 11+00		TO STA. 12+50		
ROAD DIST. ILLINOIS		EMBARRASS		
CONTRACT NO. 91374				

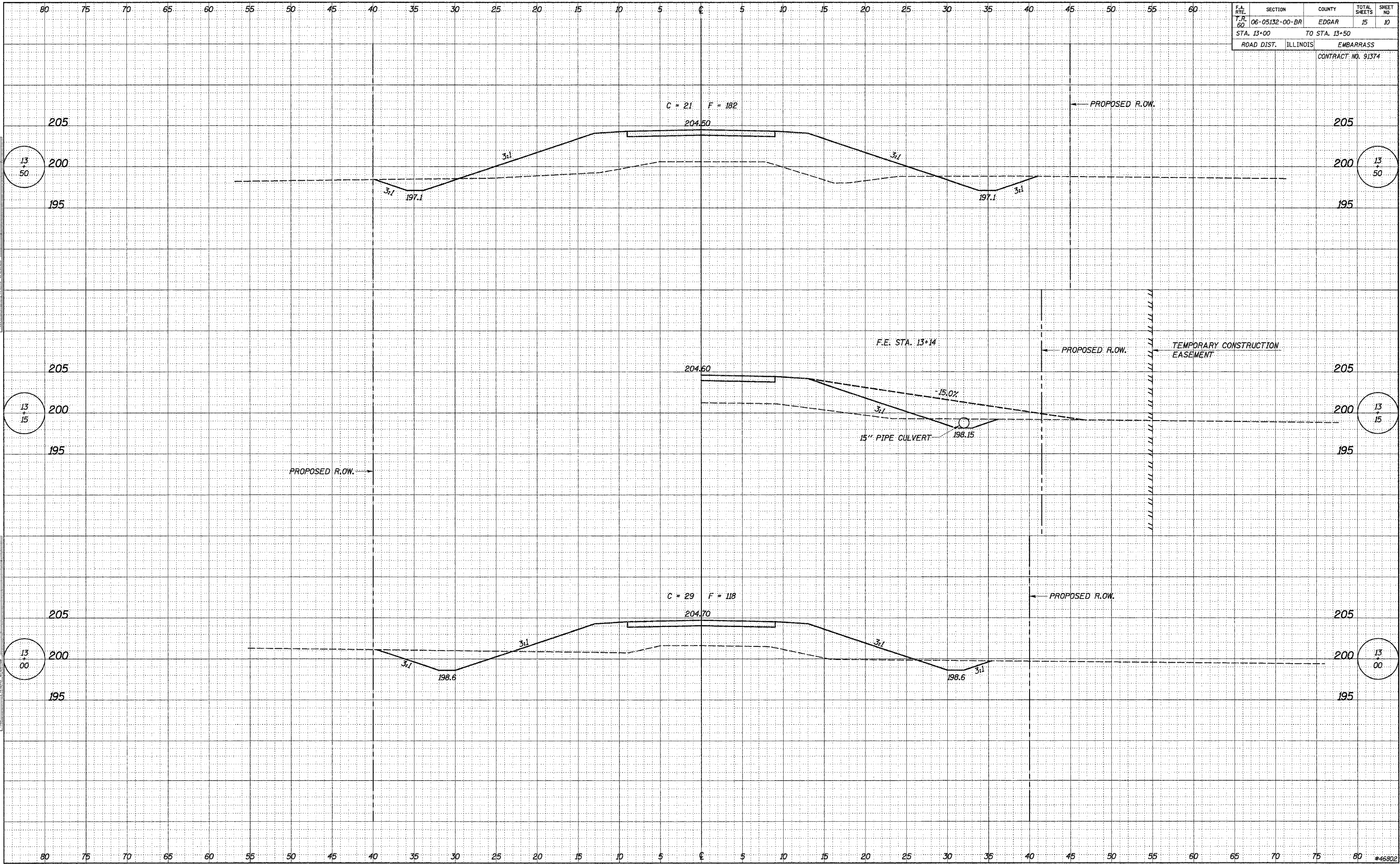


C = 9 F = 0 AHEAD
C = 0 F = 0 BACK

DATE: 12/50
BY: [blank]
SURVEYED: [blank]
PLOTTED: [blank]
CHECKED: [blank]
NOTE BOOK NO.: [blank]

DATE: 11/00
BY: S.A.P.
SURVEYED: [blank]
PLOTTED: [blank]
CHECKED: [blank]
NOTE BOOK NO.: [blank]

F.A. R.T.E.	SECTION	COUNTY	TOTAL SHEETS	SHEET NO.
T.R. 60	06-05132-00-BR	EDGAR	15	10
STA. 13+00		TO STA. 13+50		
ROAD DIST. ILLINOIS		EMBARRASS		
CONTRACT NO. 91374				

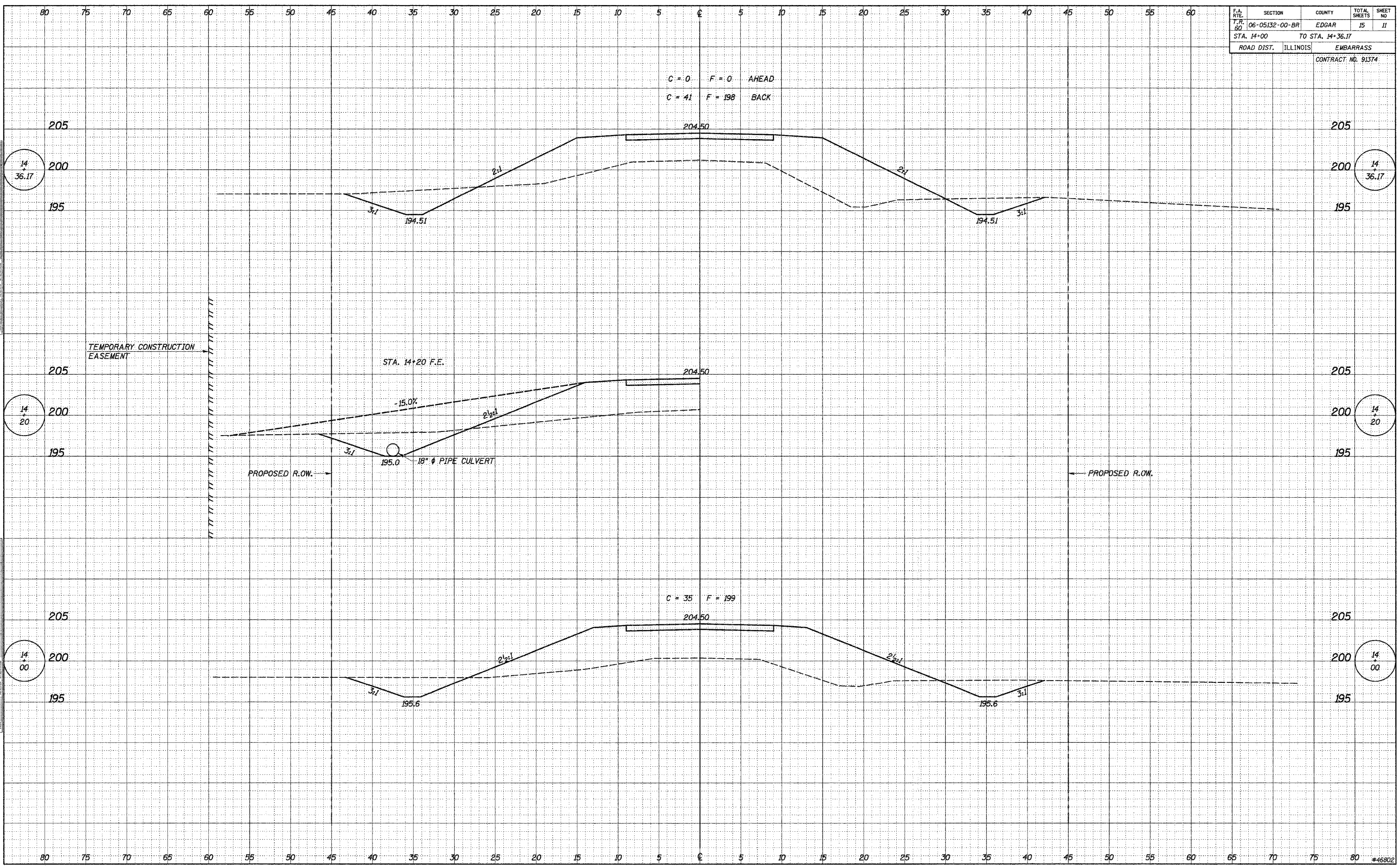


DATE	BY
SURVEYED	PLOTTED
NOTE BOOK	AREAS CHECKED
NO.	

DATE	BY
05/17/96	S.A.P.
SURVEYED	PLOTTED
NOTE BOOK	AREAS CHECKED
NO.	

F.A. RITE	SECTION	COUNTY	TOTAL SHEETS	SHEET NO.
T.R. 80	06-05132-00-BR	EDGAR	15	11
STA. 14+00		TO STA. 14+36.17		
ROAD DIST. ILLINOIS		EMBARRASS		
CONTRACT NO. 91374				

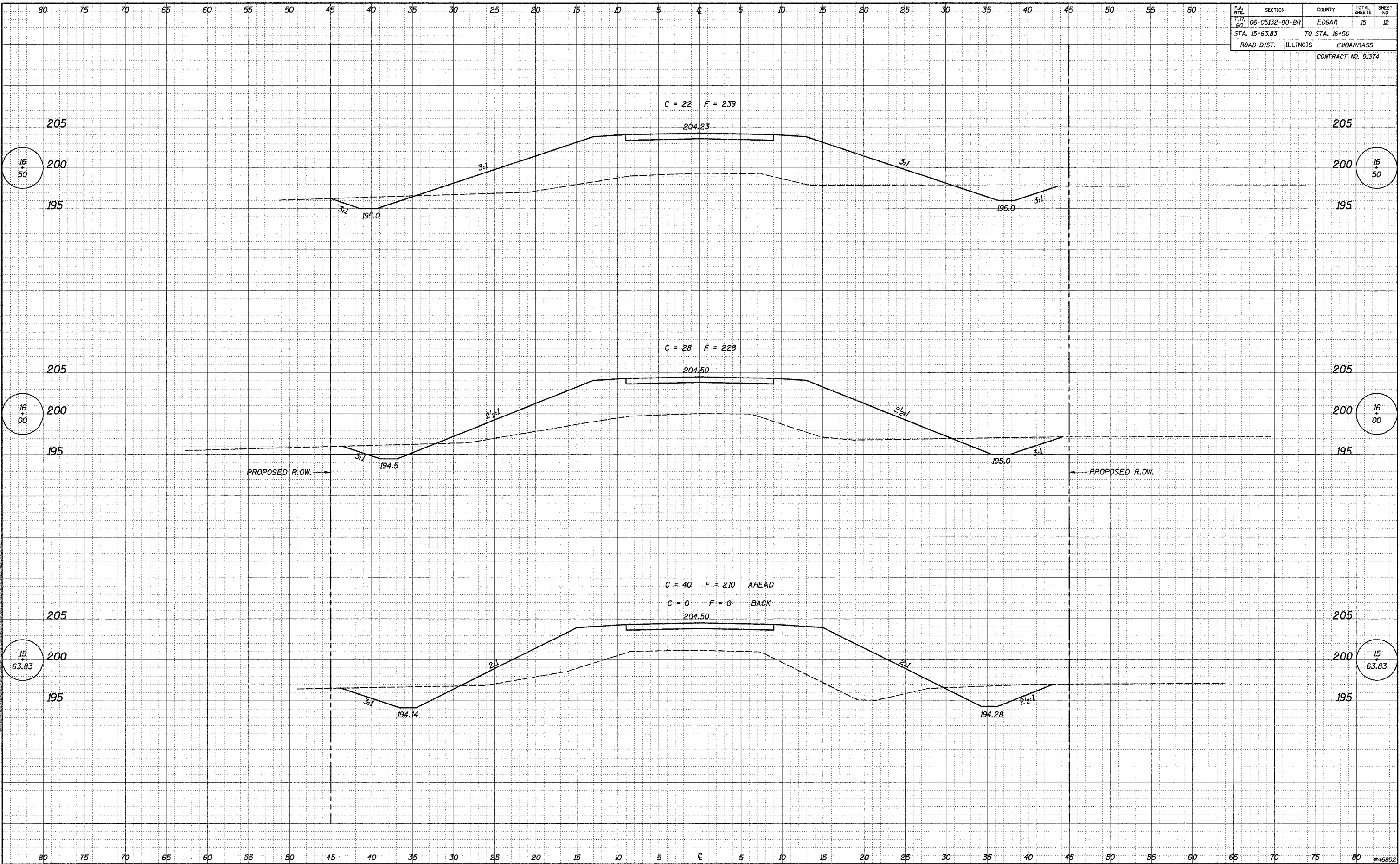
C = 0 F = 0 AHEAD
 C = 41 F = 198 BACK



DATE	BY
SURVEYED	PLOTTED
NOTE BOOK	AREAS CHECKED
NO.	

DATE	BY
07/17/98	S.A.P.
SURVEYED	PLOTTED
NOTE BOOK	AREAS CHECKED
NO.	

F.P. NO.	SECTION	COUNTY	TOTAL SHEETS	SHEET NO.
T.R. NO.	06-05132-00-BR	EDGAR	15	12
STA. 15+63.83	TO STA. 16+50			
ROAD DIST.	ILLINOIS	EMBARRASS		
CONTRACT NO. 91374				



C = 22 F = 239

204.23

C = 28 F = 228

204.50

C = 40 F = 210 AHEAD

C = 0 F = 0 BACK

204.50

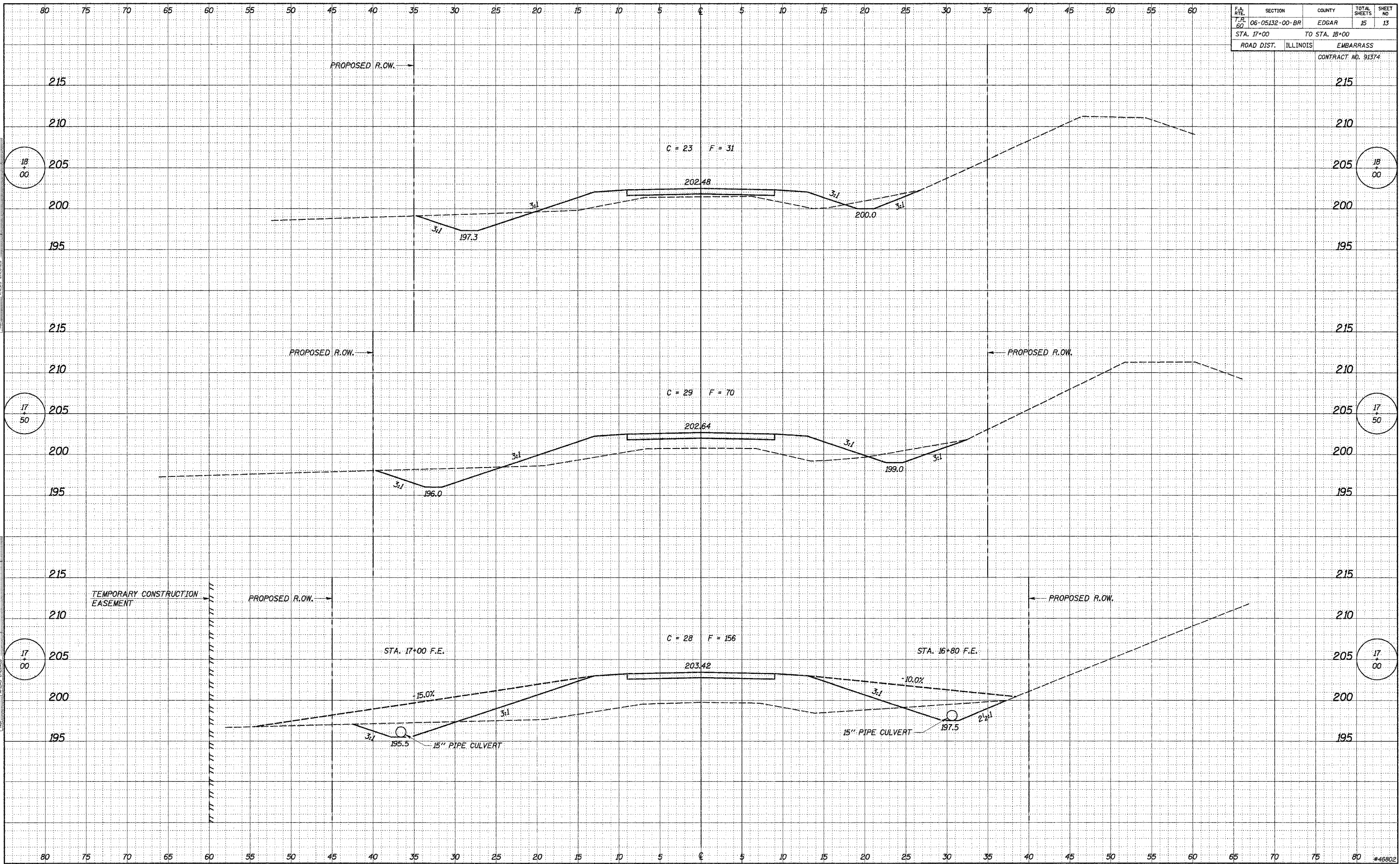
PROPOSED R.O.W.

PROPOSED R.O.W.

DATE
BY
SURVEYED
SURVEY
NOTE BOOK
NO.
TEMPLATE
AREAS
CHECKED

DATE
BY
S.A.P.
SURVEYED
SURVEY
NOTE BOOK
NO.
TEMPLATE
AREAS
CHECKED

F.P. FILE	SECTION	COUNTY	TOTAL SHEETS	SHEET NO
T.R. 60	06-05132-00-BR	EDGAR	15	13
STA. 17+00		TO STA. 18+00		
ROAD DIST. ILLINOIS		EMBARRASS		
CONTRACT NO. 91374				



DATE	BY
SURVEYED	PLOTTED
NOTE BOOK	DATE
AREAS CHECKED	
NO.	

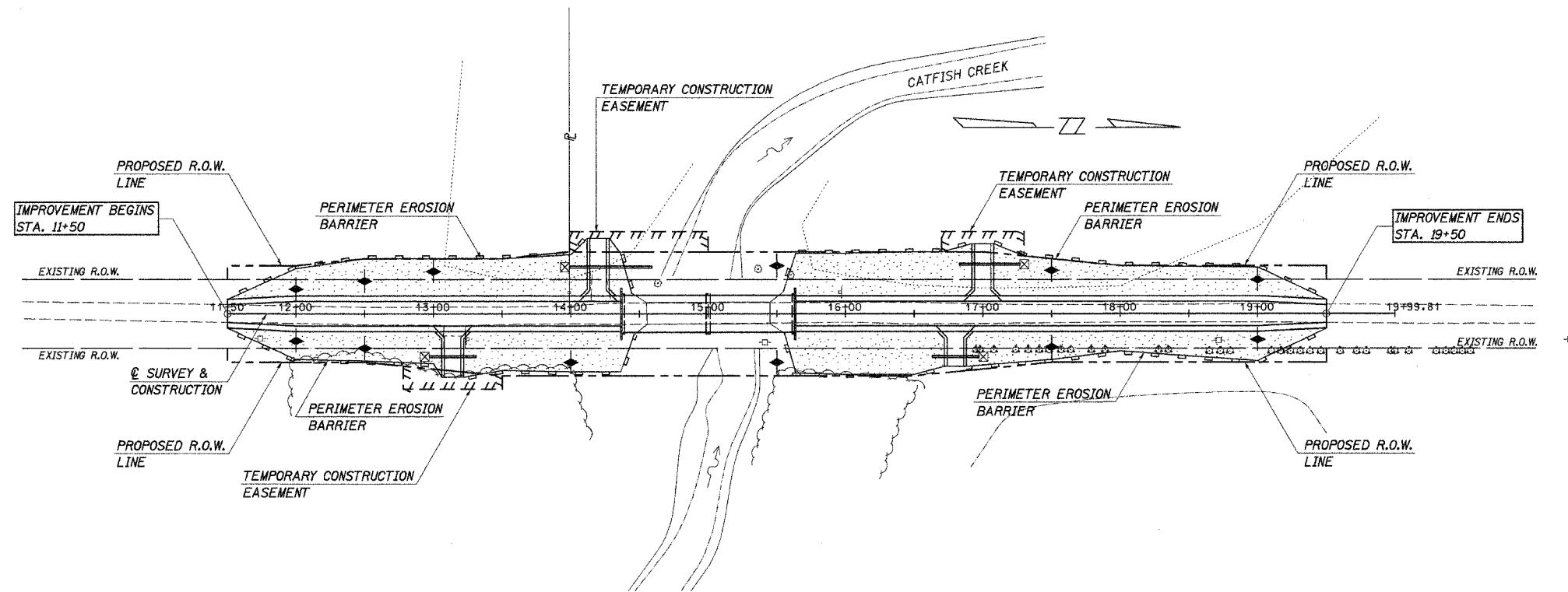
DATE	BY
07/01/06	S.A.P.
SURVEYED	PLOTTED
NOTE BOOK	DATE
AREAS CHECKED	
NO.	

ROUTE NO.	SECTION	COUNTY	TOTAL SHEETS	SHEET NO.
T.R. 60	06-05132-00-BR	EDGAR	15	15
ROAD DIST.	ILLINOIS		EMBARRASS	

CONTRACT NO. 91374

DESCRIPTION OF INTENDED SEQUENCE OF MAJOR CONSTRUCTION ACTIVITIES WHICH WILL DISTURB EARTH AND LEAD TO POSSIBLE EROSION FOR MAJOR PORTIONS OF THE CONSTRUCTION SITE:

1. PLACEMENT OF PERIMETER EROSION CONTROL FENCE PRIOR TO THE COMMENCEMENT OF ANY ROAD OR BRIDGE WORK. SEE STD. 280001.
2. REMOVAL OF EXISTING STRUCTURE.
3. CONSTRUCTION OF THE REPLACEMENT STRUCTURE.
4. PLACEMENT OF ROADWAY EMBANKMENT TO RAISE THE ROADWAY TO THE PROPOSED GRADE.
5. DRAINAGE STRUCTURES, INCLUDING DITCHES, WILL BE INSTALLED BEFORE AND/OR DURING THE COMPLETION OF THE EMBANKMENT.
6. PLACEMENT AND MAINTENANCE OF TEMPORARY EROSION CONTROL.
7. PLACEMENT OF PERMANENT EROSION CONTROL.
8. REMOVAL AND PROPER CLEAN UP OF TEMPORARY EROSION CONTROL.
9. FINAL GRADING, PLACING AGGREGATE AND OTHER MISCELLANEOUS ITEMS.



TEMPORARY EROSION CONTROL:	
	PERIMETER EROSION BARRIER
	TEMPORARY DITCH CHECK
	INLET AND PIPE PROTECTION
PERMANENT EROSION CONTROL:	
	SEEDING CLASS 2, FERTILIZERS, & MULCH, METHOD 2
	STONE RIPRAP DITCH

TEMPORARY DITCH CHECKS

LT. & RT. STA. 12+00	= 2 EACH
LT. & RT. STA. 12+50	= 2 EACH
LT. STA. 13+00	= 1 EACH
RT. STA. 14+00	= 1 EACH
LT. & RT. STA. 15+50	= 2 EACH
LT. & RT. STA. 17+50	= 2 EACH
LT. & RT. STA. 19+00	= 2 EACH
TOTAL	= 12 EACH

TEMPORARY DITCH CHECKS

RT. STA. 12+97	= 1 EACH
LT. STA. 14+00	= 1 EACH
RT. STA. 16+97	= 1 EACH
LT. STA. 17+17	= 1 EACH
TOTAL	= 4 EACH

BILL OF MATERIAL

ITEM	UNIT	QUANTITY
TEMPORARY EROSION CONTROL SEEDING	POUND	94
TEMPORARY DITCH CHECKS	EACH	12
PERIMETER EROSION BARRIER	FOOT	1500
INLET AND PIPE PROTECTION	EACH	4

EROSION CONTROL PLAN
 SECTION 06-05132-00-BR
 EMBARRASS ROAD DISTRICT
 EDGAR COUNTY
 STA. 15+00

4440 ASH GROVE
 SPRINGFIELD, IL 62711
 (217) 793-8600
 www.fehr-graham.com

FEHR-GRAHAM & ASSOCIATES, LLC
 ENGINEERING AND SCIENCE CONSULTANTS
 FREDERICK, IL. ROCKFORD, IL. ROCKFORD, IL. SPRINGFIELD, IL.

DRAWN: S.A.P.
 DATE: 05/30/06

CHECKED: G.J.C.
 DATE: JUNE/06

JOB NO.: 46802
 FILE: EROSION.DGN
 DATE: 01/24/07